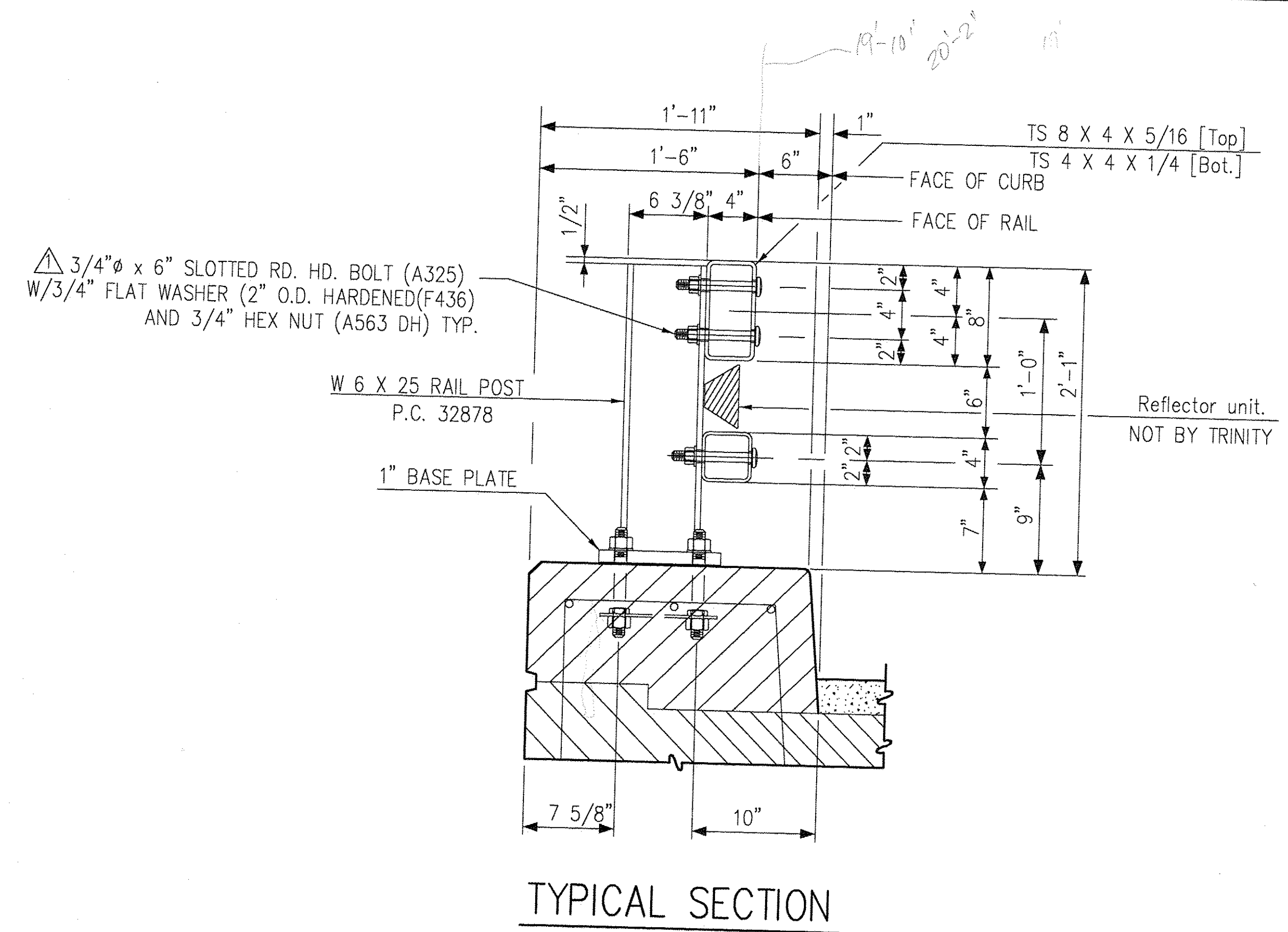
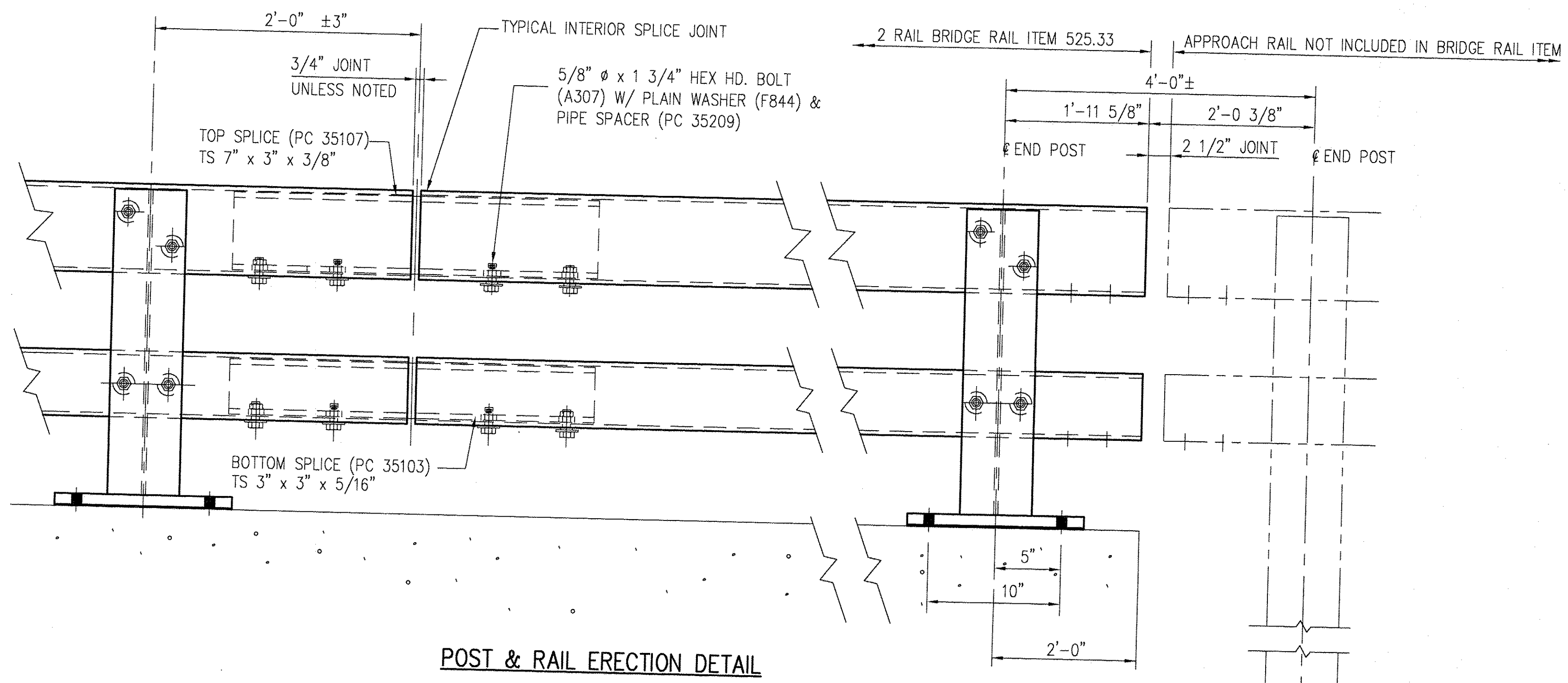


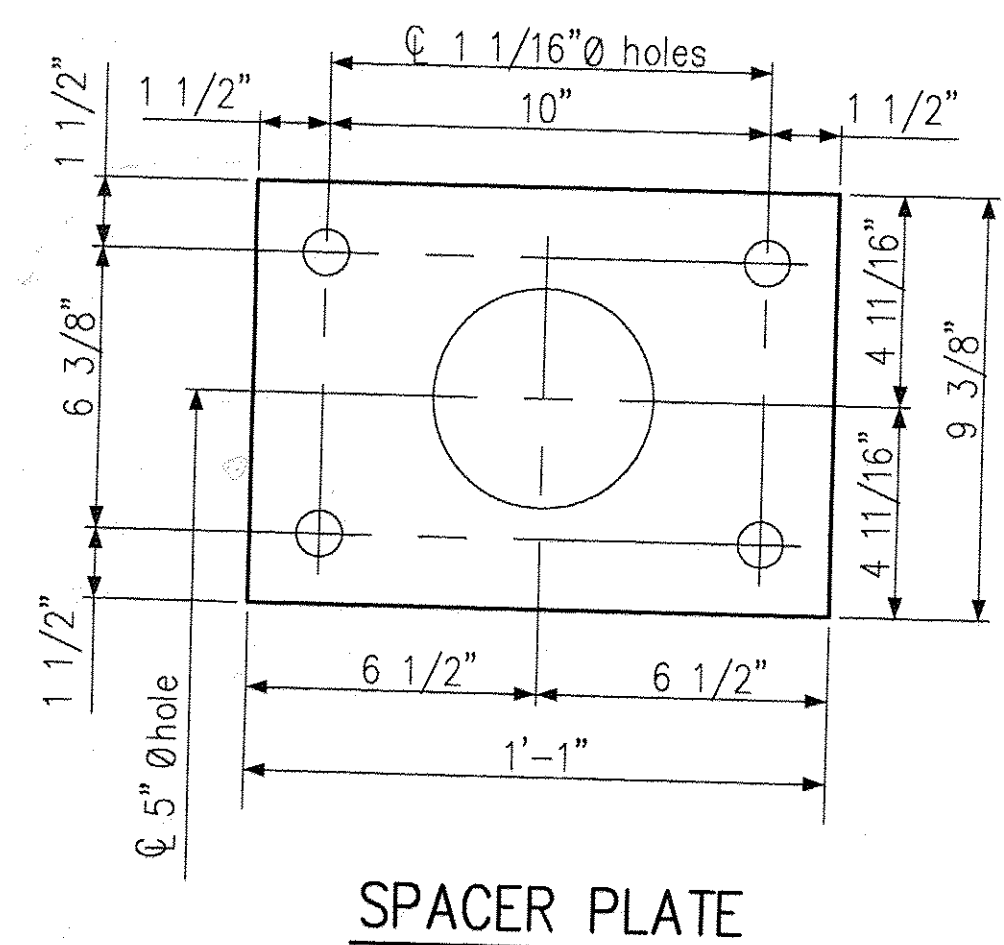
F:\RfShare\Engineering\WIP\VT1006227\22-1006227-E1.dwg 1/14/03 16:39:27



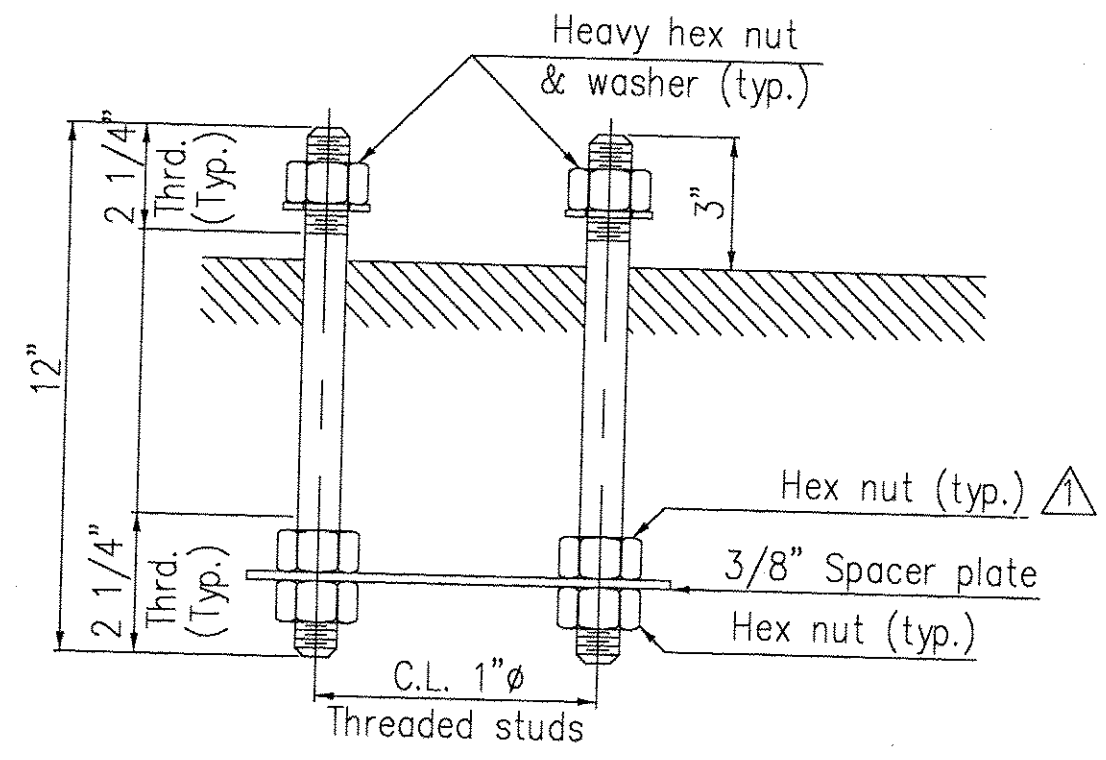
TYPICAL SECTION



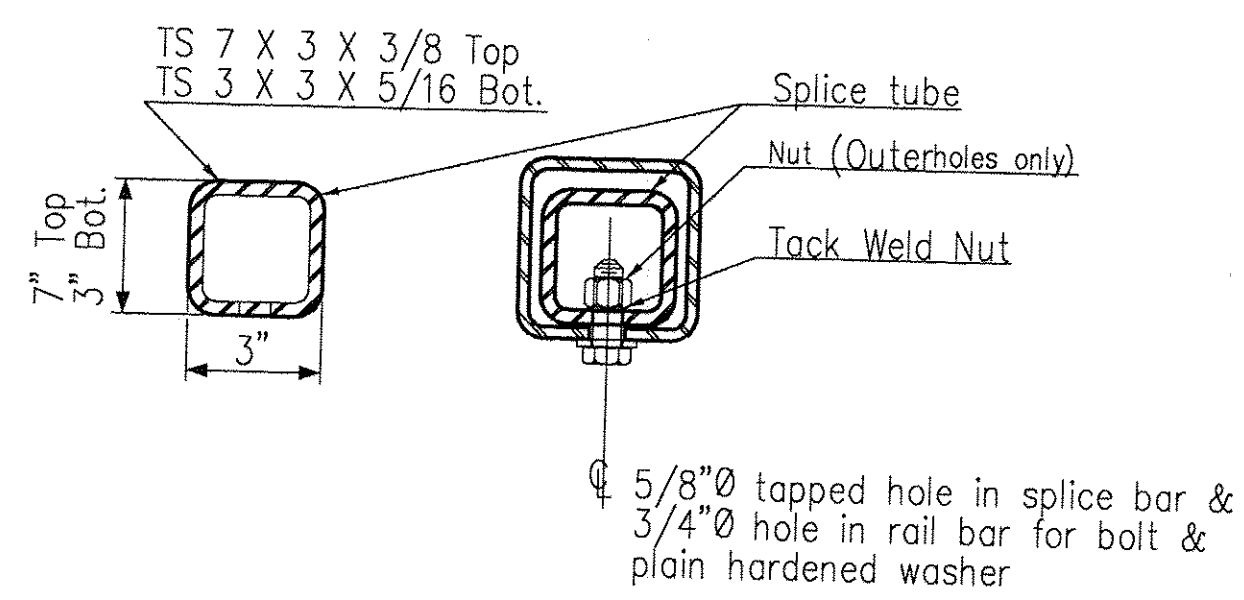
POST & RAIL ERECTION DETAIL



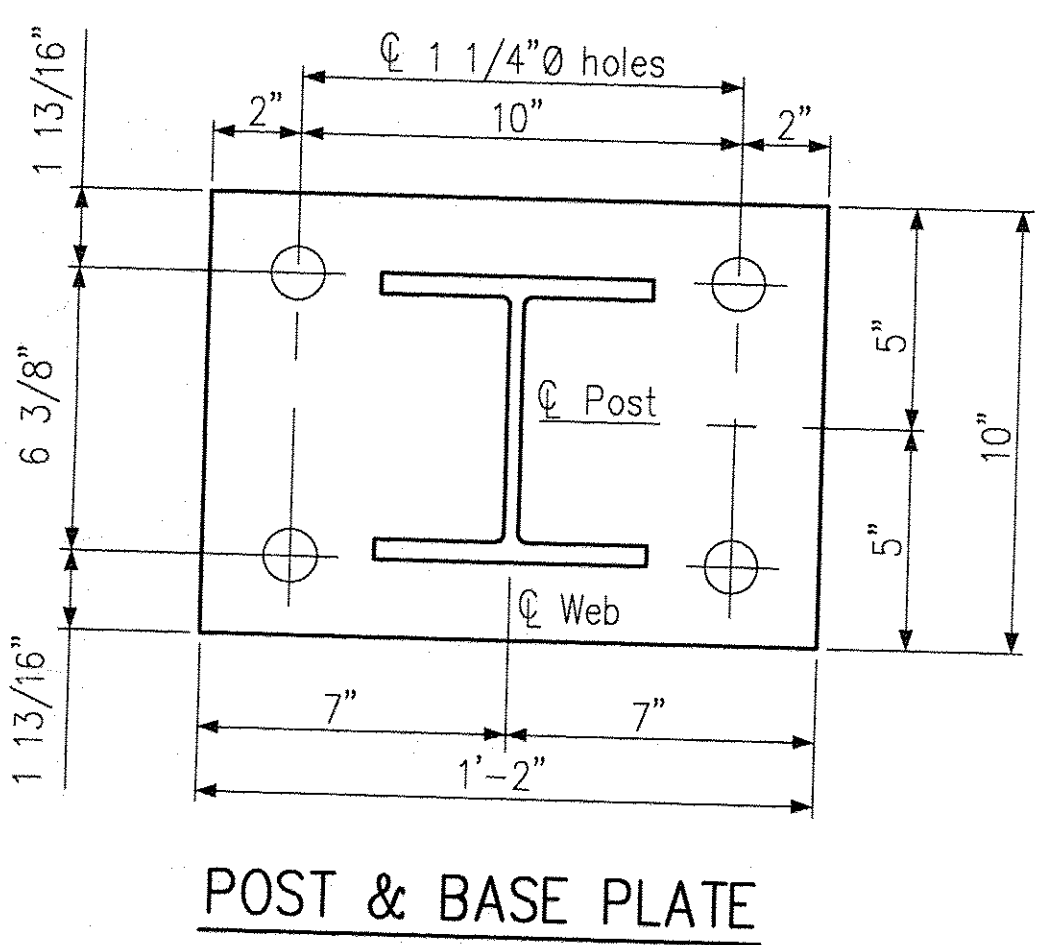
SPACER PLATE



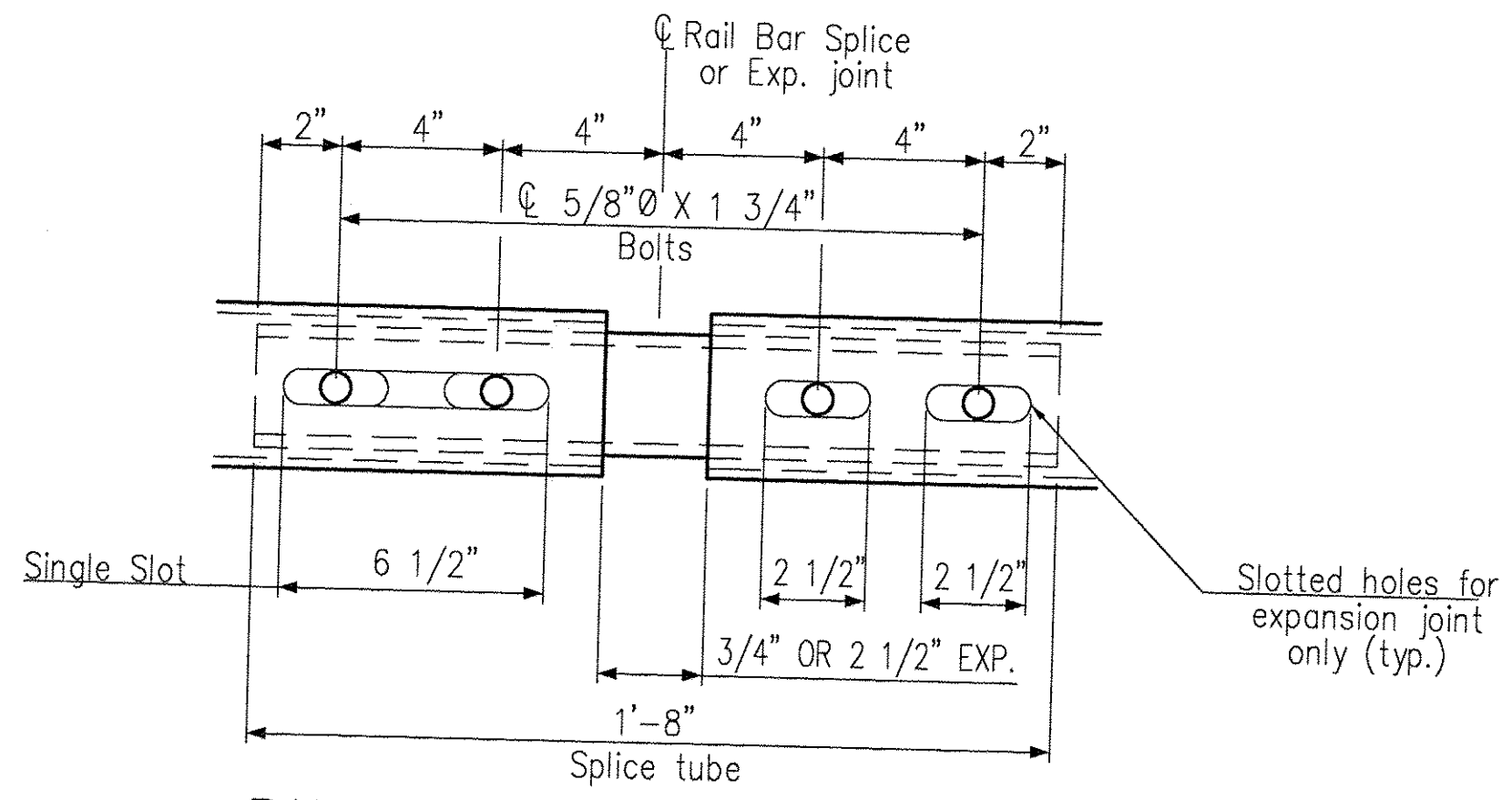
RAIL POST ANCHORAGE



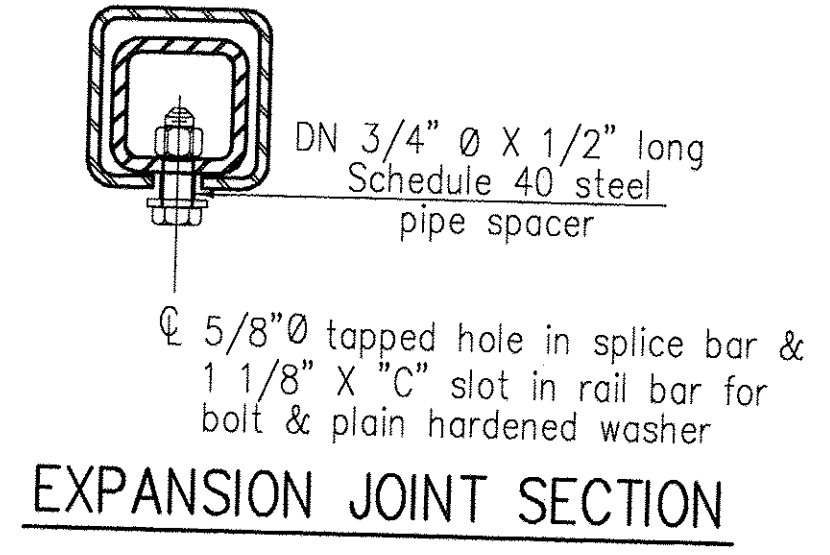
RAIL BAR SPLICE SECTION



POST & BASE PLATE



RAIL BAR SPLICE & EXP. JOINT DETAIL



EXPANSION JOINT SECTION

NOTES

1. All work and materials shall conform to the provisions of Section 525 - Railings of the Standard Specifications for Construction.
2. Rail posts shall be set normal to grade.
3. Sections of rail bar shall be attached to a minimum of two [2] rail posts and preferably to at least four [4] posts.
4. Rail bar expansion joints shall be provided in any rail bay spanning a superstructure expansion joint. Expansion joint width shall be 2 1/2" at 45F and will be adjusted in the field by the Engineer.
5. All parts shall be galvanized after fabrication in accordance with AASHTO M111, except that hardware shall meet the requirements of AASHTO M232. Prior to galvanizing, all corners and edges of steel plates, shapes, etc., shall be ground to a 1/16" radius.
6. Rail posts anchoring nuts shall be tightened to a snug fit and given an additional 45 degree turn.
7. Any bending of rail shall be by shop procedure only.
8. Holes in rails for rail bar attachment may be field drilled. Holes shall be coated with an approved zinc-rich paint prior to erection.

APPROVAL DRAWING

FOR RAILING LAYOUTS SEE SHTS. E2 THRU. E4 OF 4 (22) 1006227
FOR DETAILS SEE SHEET D1 THRU. D4 OF 4 (22) 1006227

VAOT RECEIVED
OK'D BY [Signature]
RESUBMIT APPROVED
BY [Signature] DATE 1-30-03

NOTES:

1. ALL RAILING POSTS ARE PC 32878.
2. ALL TS 8" x 4" RAIL SPLICES ARE PC 35107.
3. ALL TS 4" x 4" RAIL SPLICES ARE PC 35103.
4. TOTAL PAY LENGTH: 1870'-7 13/16" LIN. FT.
5. FINISH: GALV. A123, HARDWARE: GALV. A153.

This drawing and the information shown thereon is the sole property of TRINITY INDUSTRIES, INC. Neither the drawing nor such information is to be used for any purpose other than that for which it was specifically furnished by TRINITY INDUSTRIES, INC., nor is any reproduction authorized without written permission.

REV.	CHK'D	BY	DATE	REVISED CALL OUTS	REMARKS
1	SAR		1/02/03	REVISED CALL OUTS	
ITEM NUMBER 525.33 T2 STEEL BRIDGE RAIL (PL2)					
STATE OF VERMONT AGENCY OF TRANSPORTATION VT. ROUTE 9 - TOWNS OF SEARSBURGH & WILMINGTON COUNTIES OF BENNINGTON & WINDHAM				DRAWN	SAR
STATE PROJECT NO. NHF 010-1(18) BRIDGE Nos. 25, 25A & 25B				CHECKED	S.H.
CUSTOMER		NORTHLAND SPECIALTIES		SCALE	N.T.S.
		P.O. No. VERBAL		DATE	11/12/02
HIGHWAY SAFETY PRODUCTS 2525 STEMMONS FREEWAY, DALLAS, TX 75207				ENG. FILE #	22-1006227-E1
				SHT.No.	E1 OF 4
				TRINITY SALES ORDER NO.	(22) 1006227
				REV.	

GIRARD ENGINEERING DEPT.
TRINITY INDUSTRIES, INC.
1170 N. STATE STREET
GIRARD, OHIO 44420
JAN 15 2003