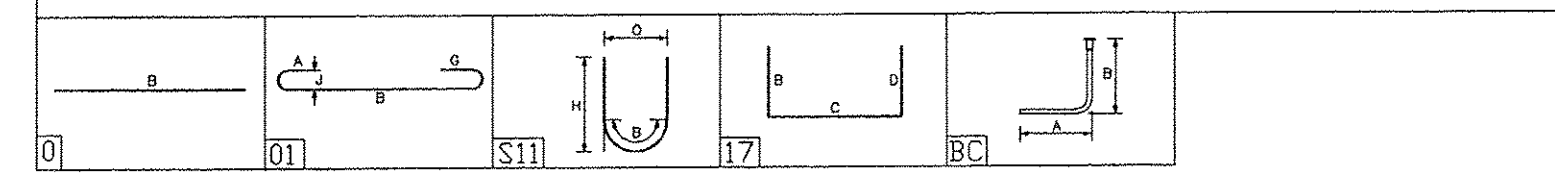


**REINFORCEMENT PLAN**  
TOP MAT SHOWN - TYP. EA. UNIT

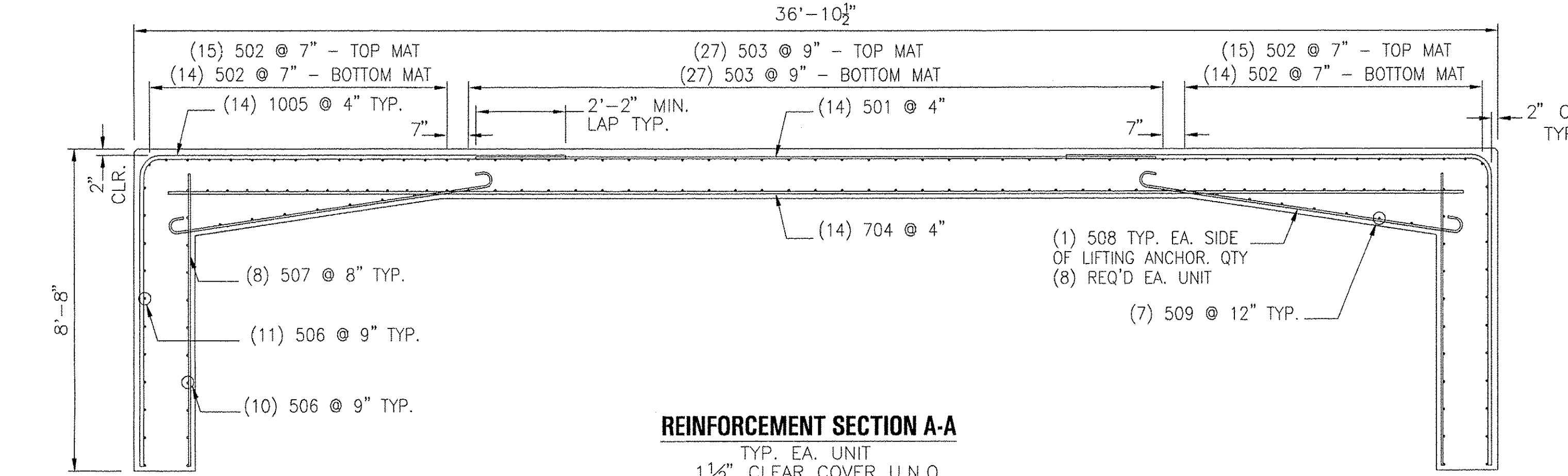
REINFORCEMENT SCHEDULE - TYP. EA UNIT																
Bar Mark	Qty	Size	Total Length	Type	'A'	'B'	'C'	'D'	'E'	'F'	'G'	'H'	'J'	'K'	'O'	'R'
501	14	#5	18'4"			18'4"										
502	58	#5	4'4"			4'4"										
503	54	#5	4'4"			4'4"										
704	14	#7	35'0"			35'0"										
1005	28	#10	19'10 1/2"	17		8'4 1/2"	11'6"									
506	42	#5	4'4"			4'4"										
507	16	#5	7'10 1/2"			7'10 1/2"										
508	8	#5	10'7 1/2"	1	11'	8'9 1/2"				11'		5'				
509	14	#5	4'4"			4'4"										
610	4	#6	5'4 1/2"	S11								2'5"			7 1/2"	
611	32	#6	5'10 1/2"	S11								2'7 1/2"			9"	
412	12	#4	5'10 1/2"	S11								2'6"			1'0"	

ALL DIMENSIONS ARE OUT TO OUT  
ALL STEEL A615 Grade 60

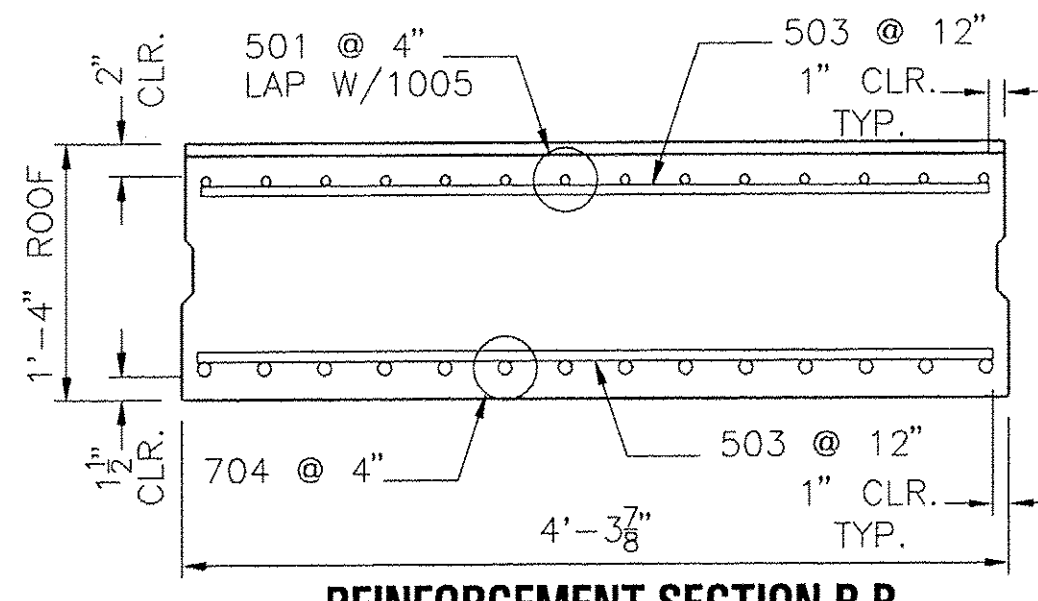
FOR TYPICAL BAR BENDS REFER TO  
CRSI MANUAL OF STANDARD PRACTICE



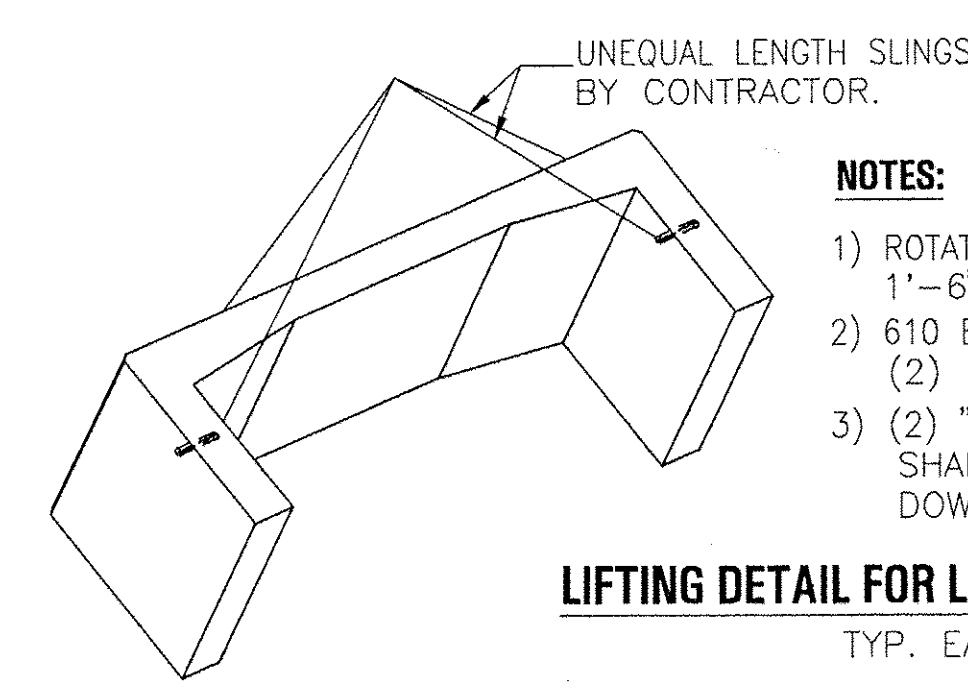
EPOXY REBAR COULERS - MK#S H1 & H3 ONLY																
Bar Mark	Qty	Size	Total Length	Type	'A'	'B'	'C'	'D'	'E'	'F'	'G'	'H'	'J'	'K'	'O'	'R'
E620	14	#6	2'0 1/2"	BC	1'0"	1'0 1/2"										



**REINFORCEMENT SECTION A-A**  
TYP. EA. UNIT  
1 1/2" CLEAR COVER U.N.O.



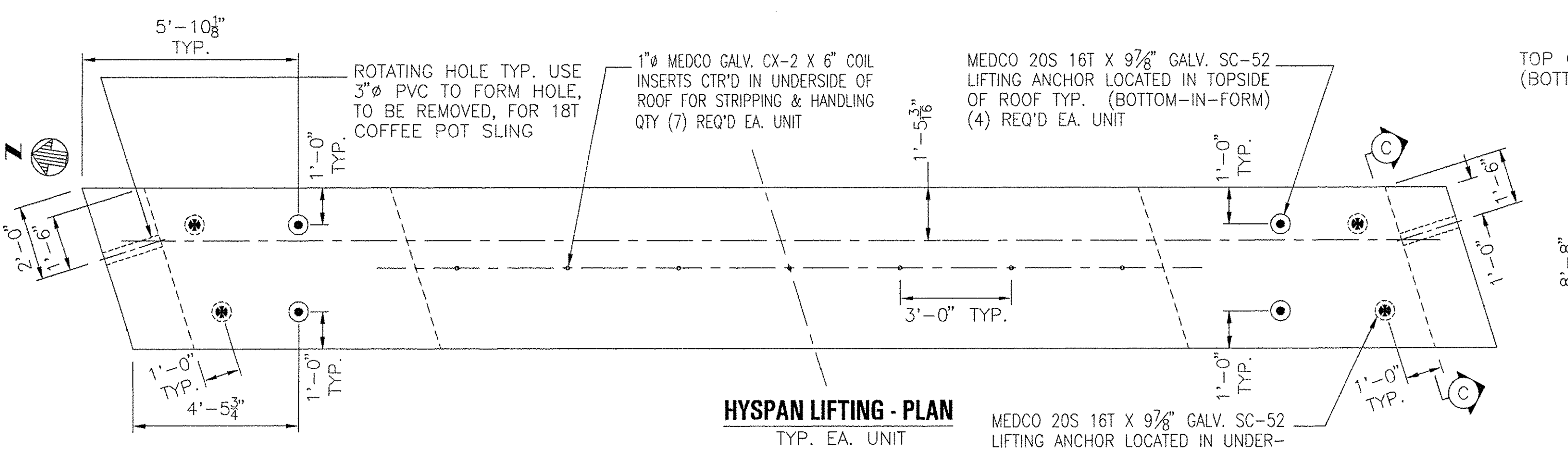
**REINFORCEMENT SECTION B-B**  
TYP. AT INTERIOR UNITS  
NO ROOF KEYWAY @ FASCIA  
(MK#S H1 & H3)



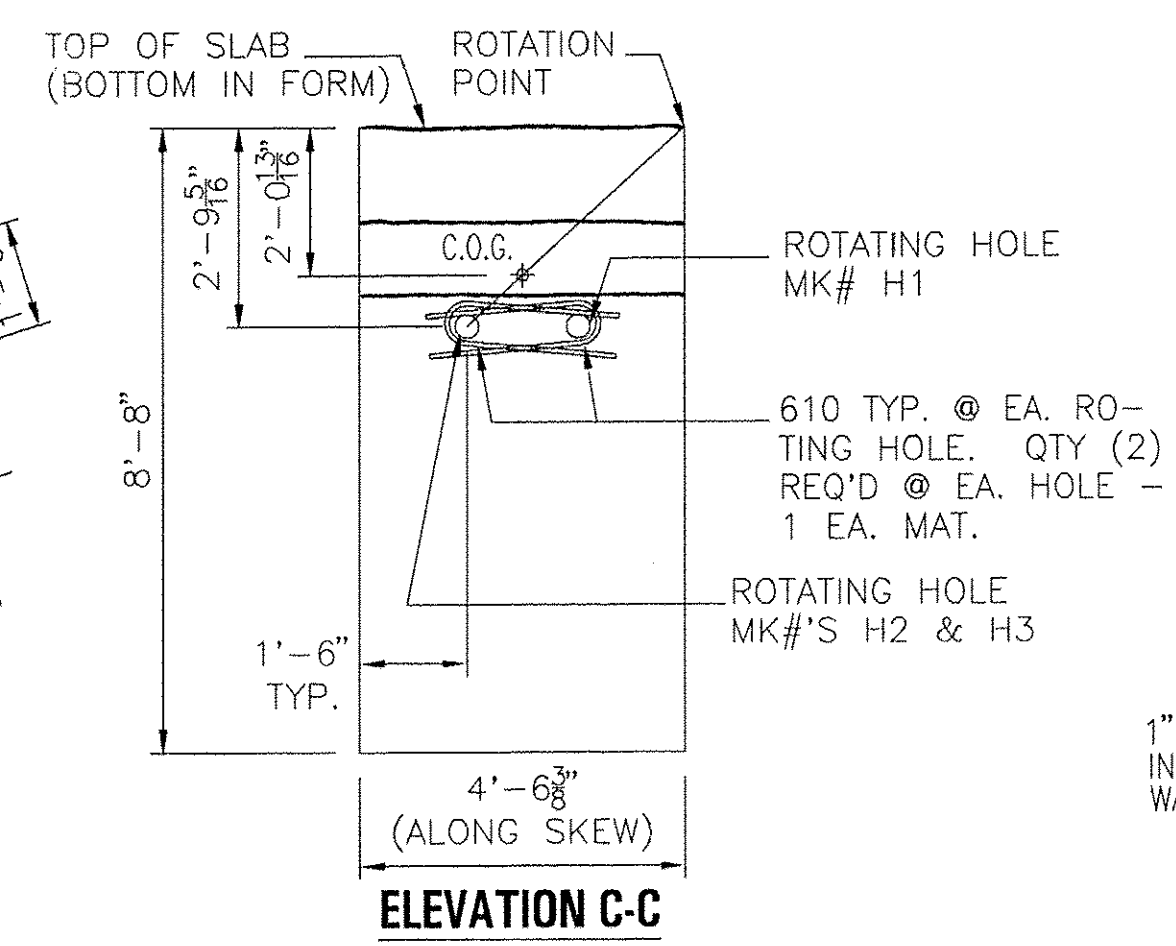
**NOTES:**

- 1) ROTATING HOLE TO BE ON INTERIOR JOINT SIDE OF H1 & H3, 1'-6" FROM INTERIOR EDGE OF WALL.
- 2) 610 BARS ARE ADD'L REINFORCEMENT AROUND ROTATING HOLE (2) REQ'D. PER HOLE, (1) EACH MAT.
- 3) (2) "ROTATING HOLES" & THE TOPSIDE LIFTING ANCHORS SHALL BE USED WHEN LIFTING THE UNIT IN THE LAID DOWN POSITION.

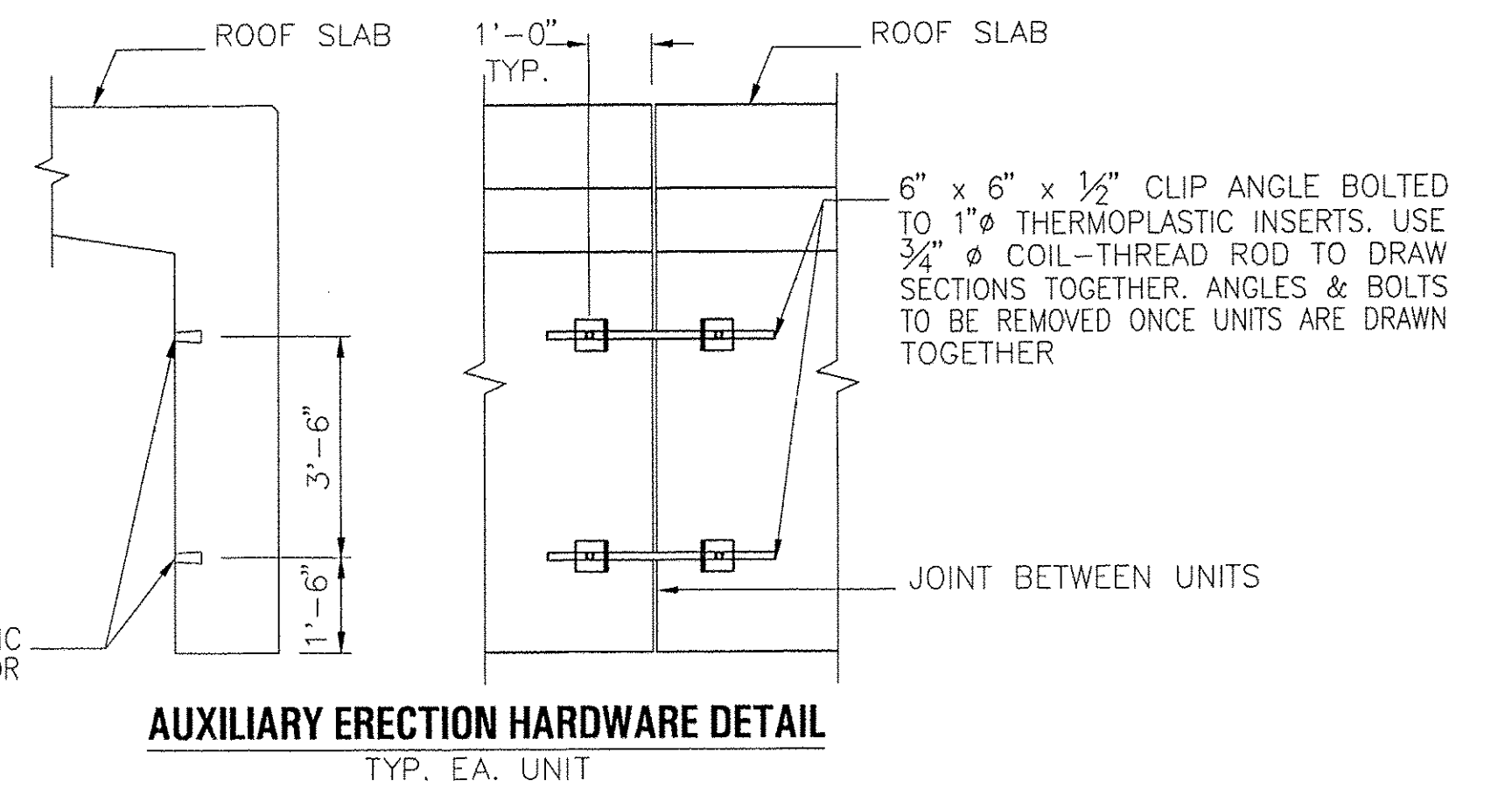
**LIFTING DETAIL FOR LOADING & UNLOADING**  
TYP. EA. UNIT



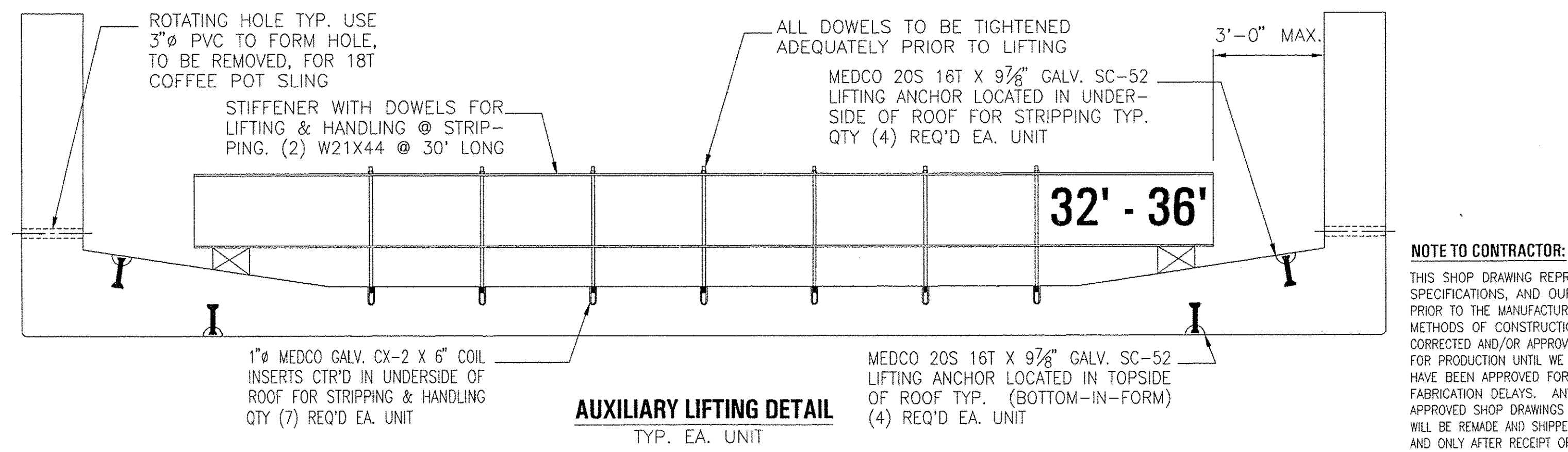
**HYPAN LIFTING - PLAN**  
TYP. EA. UNIT



**ELEVATION C-C**



**AUXILIARY ERECTION HARDWARE DETAIL**  
TYP. EA. UNIT



**AUXILIARY LIFTING DETAIL**  
TYP. EA. UNIT

**NOTE TO CONTRACTOR:**  
THIS SHOP DRAWING REPRESENTS OUR INTERPRETATION OF THE PLANS AND SPECIFICATIONS, AND OUR CONTRACT REQUIREMENTS FOR THIS PROJECT. PRIOR TO THE MANUFACTURE OF ANY ITEM FOR THIS PROJECT, ALL DIMENSIONS, METHODS OF CONSTRUCTION AND EXISTING CONDITIONS MUST BE CHECKED, CORRECTED AND/OR APPROVED BY OUR CUSTOMER. NO ITEM WILL BE SCHEDULED FOR PRODUCTION UNTIL WE HAVE BEEN NOTIFIED IN WRITING THAT OUR DRAWINGS HAVE BEEN APPROVED FOR FABRICATION. APPROVAL DELAYS WILL RESULT IN FABRICATION DELAYS. ANY ITEM THAT IS FABRICATED IN ACCORDANCE WITH APPROVED SHOP DRAWINGS THAT DOES NOT FIT THE CUSTOMER'S REQUIREMENTS WILL BE REMADE AND SHIPPED TO THE PROJECT ONLY AT THE CUSTOMER'S EXPENSE, AND ONLY AFTER RECEIPT OF A PURCHASE ORDER TO COVER THE ADDED EXPENSE. WE ASSUME NO RESPONSIBILITY FOR THE ALTERING OF OUR PRODUCTS TO ACCOMMODATE OTHER TRADES UNLESS REQUIRED INFORMATION IS FURNISHED AND SHOWN ON OUR SHOP DRAWINGS AT THE TIME THEY ARE APPROVED FOR FABRICATION BY OUR CUSTOMER.

VAOT  
RECEIVED  
OK'D BY DV OK'D BY  
AUG 01 2002  
RESUBMIT APPROVED  
BY RRW DATE 8/23/02

NO.	DATE	BY	REVISIONS

THE FORT MILLER Co., Inc. F.M. JOB NO. 734  
P.O. BOX 98 SHEET NO. 4  
SCHUYLERVILLE, NY 12871 DATE: 6-1-02  
(518) 695-5000 DRN. BY: M.WERN  
(518) 695-4970 FAX CHK. BY: S. HARRIGAN

PROJECT: VT RTE 9 OVER BOND BROOK T/O SEARSBURG, VT SCALE: NONE  
SUBJECT: REINFORCEMENT/LIFTING

CONTRACTOR: BECK & BELLUCCI, INC. DWG. NO.  
ENGINEER/ARCHITECT: CLOUGH, HARBOUR & ASSOCIATES