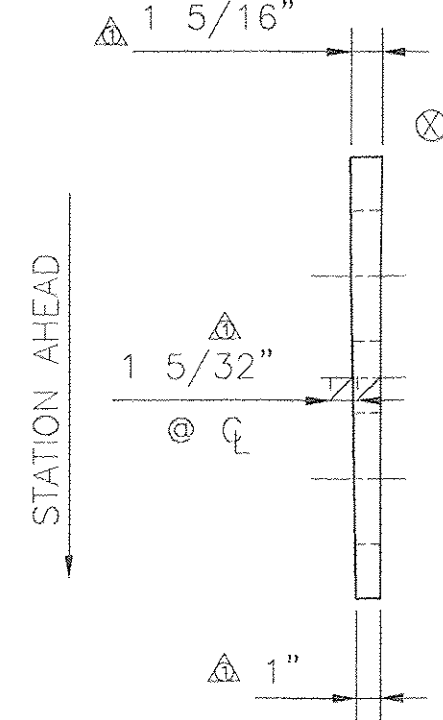
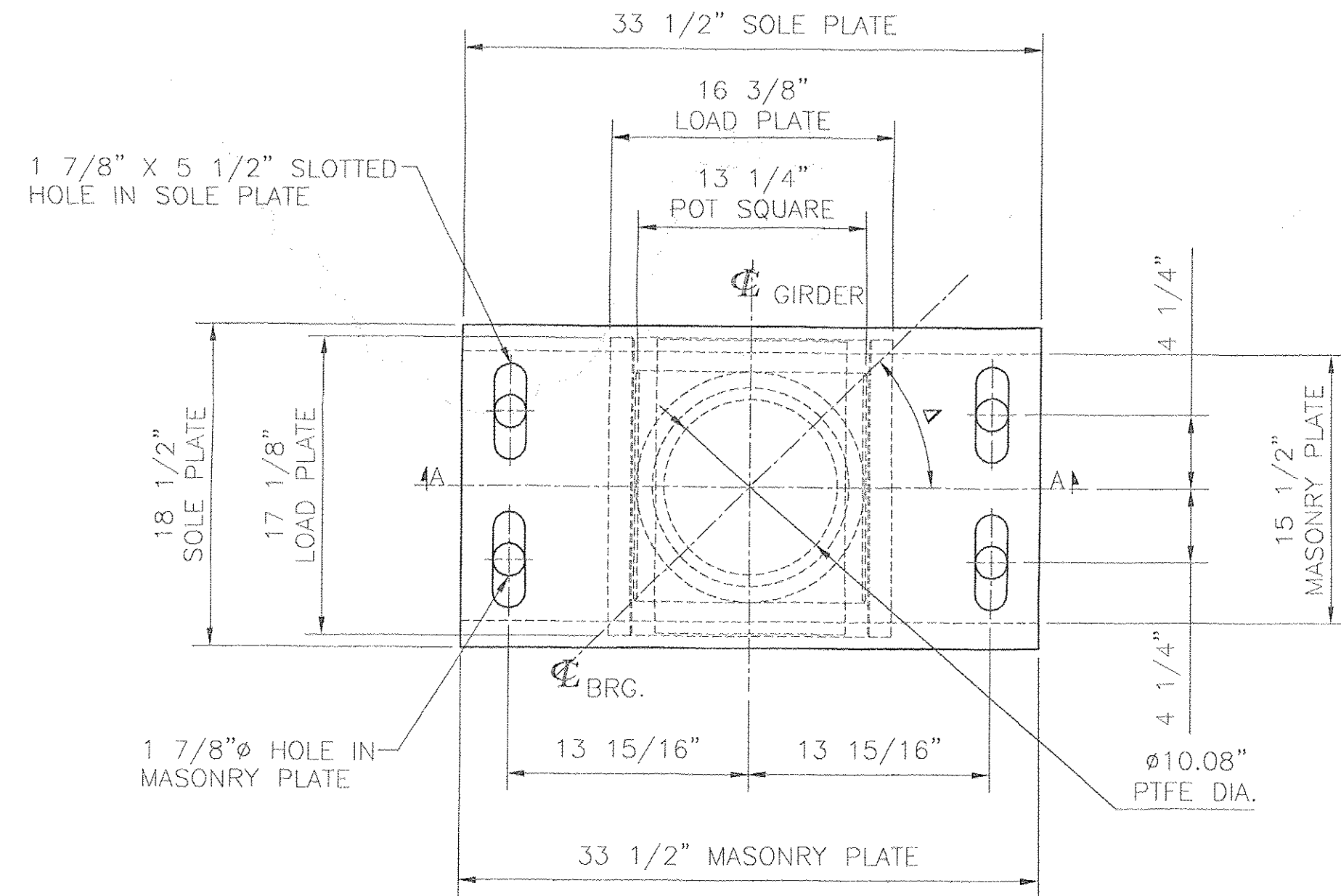
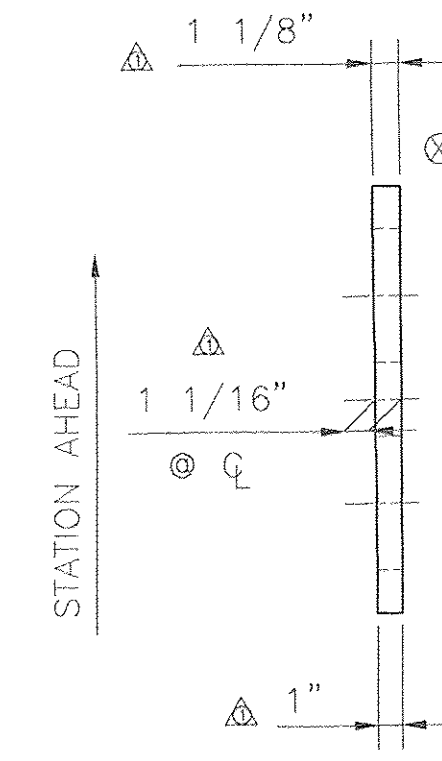
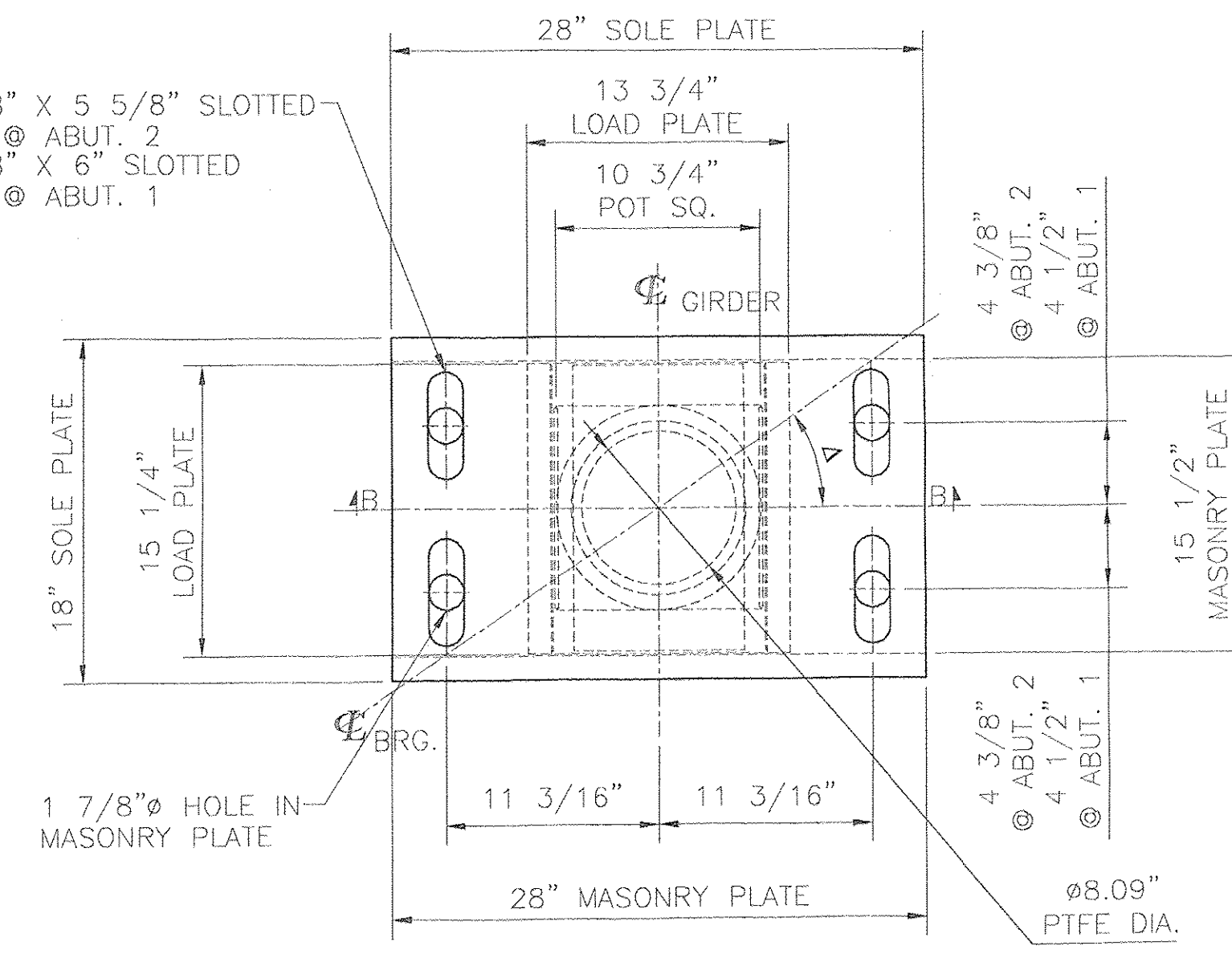


SKREW ANGLE Δ: 44°-25'-12"

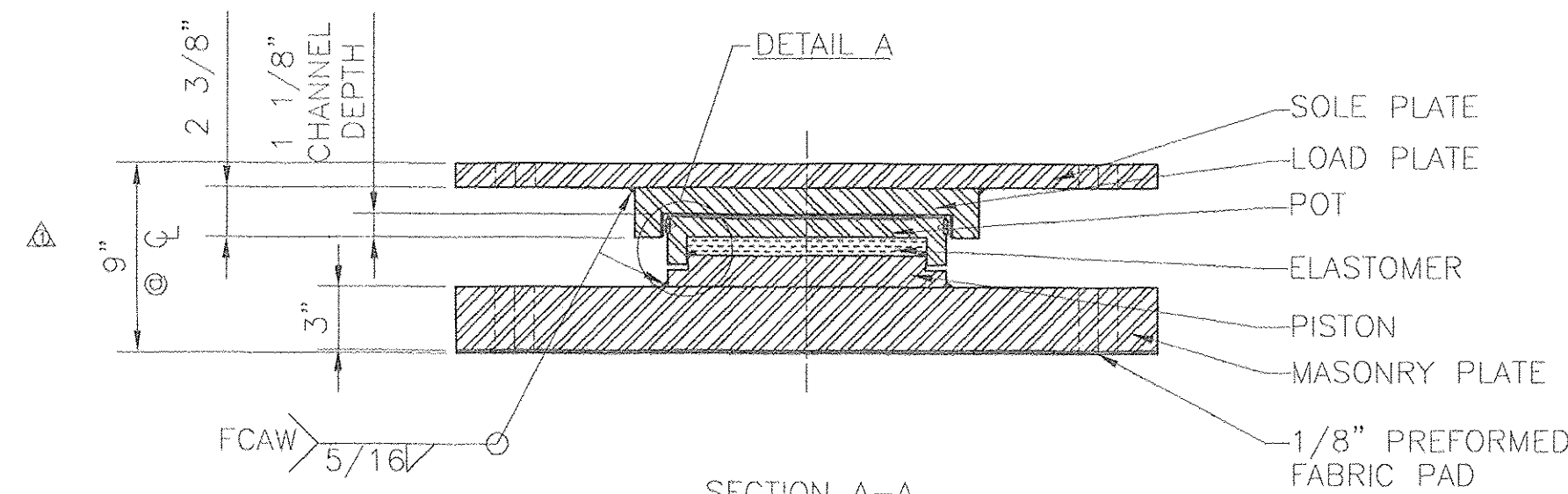
SKREW ANGLE Δ @ ABUT. 1: 34°-20'-15"
SKREW ANGLE Δ @ ABUT. 2: 23°-34'-31"



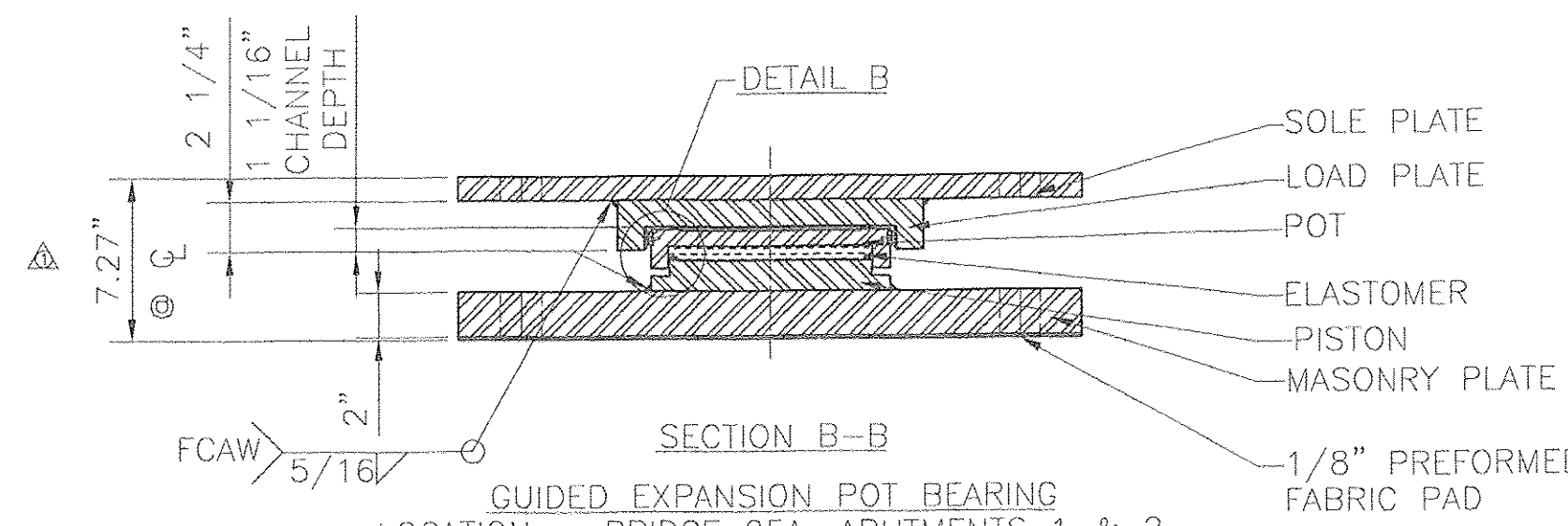
SIDE ELEVATION
BEVELED SOLE PLATE ONLY



SIDE ELEVATION
BEVELED SOLE PLATE ONLY



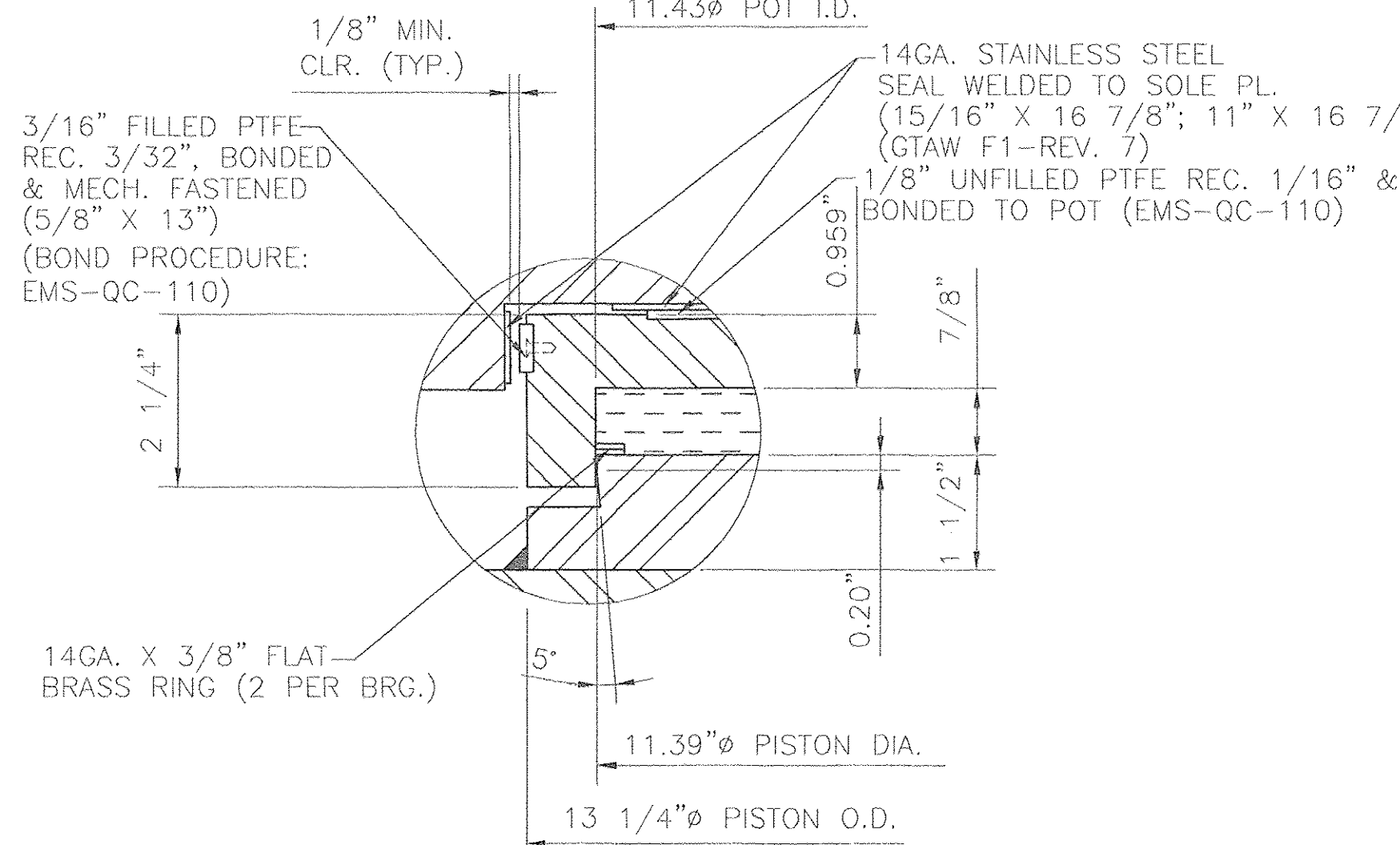
SECTION A-A
GUIDED EXPANSION POT BEARING
LOCATION - BRIDGE 25, PIER 1
QUANTITY - 5
VERTICAL LOAD - 359 KIPS
HORIZONTAL LOAD - 46 KIPS
TOTAL LONGITUDINAL MOVEMENT - 3 7/8"
TOTAL TRANSVERSE MOVEMENT - 1/4"



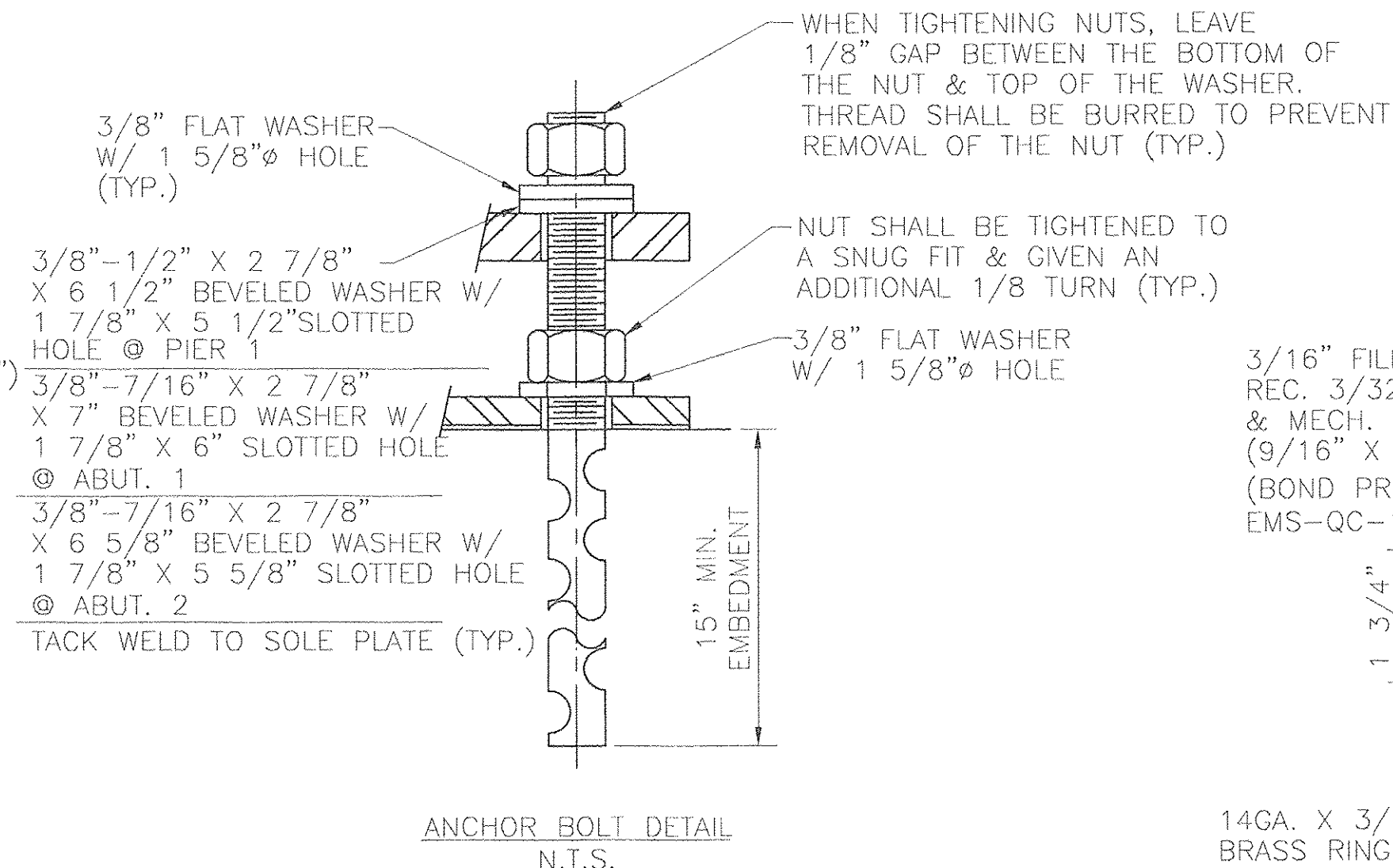
SECTION B-B
GUIDED EXPANSION POT BEARING
LOCATION - BRIDGE 25A, ABUTMENTS 1 & 2
QUANTITY - 10
VERTICAL LOAD - 231 KIPS
HORIZONTAL LOAD - 32 KIPS
TOTAL LONGITUDINAL MOVEMENT - 4 1/2"
TOTAL TRANSVERSE MOVEMENT - 1/4"

MATERIAL:
STEEL - ASTM A709 GR 50 ZINC METALIZED. MASONRY PLATE TO BE CVN.
ELASTOMER - AASHTO 50 DUROMETER NEOPRENE PER VT AOT SECTION 731.03. (LUBRICATED USING DOW CORNING COMPOUND NO. 4 SILICONE GREASE)
BRASS RINGS - ASTM B36 HALF HARD
PREFORMED FABRIC PAD - AASHTO 18.4.10.1 DIV. II
STAINLESS STEEL - ASTM A240 TYPE 304, 10 RMS FINISH OR LESS
PTFE - ASTM D1457 VIRGIN UNFILLED & FILLED

- NOTES:**
- DESIGN ROTATION: 0.02 RADS.
 - BEARINGS MUST NOT BE DISASSEMBLED.
 - BEARINGS SHALL BE SHIPPED IN DUST & MOISTURE PROOF COVERS FOR PROTECTION DURING TRANSIT & STORAGE.
 - LOCATION OF FABRICATION PLANT - 70 SOUTH ST. WALPOLE, MA 02081
 - COSMEC INC. REPRESENTATIVE - MR. MATT McANDREWS (508-668-6600)
 - ALL STEEL COMPONENTS SHALL BE METALIZED AS PER SECTION 531.04(b) AND 506.15. AFTER THE BEARINGS ARE METALIZED, THEY SHALL BE SEALED WITH AN APPROVED PRIMER AS SPECIFIED IN SUBSECTION 506.15(c).
 - ⊗ MARK THICK END OF BEVEL
 - PRIOR TO METALIZING, ALL CORNERS & EDGES OF STEEL PLATES, SHAPES, ETC., SHALL BE GROUND TO A 1/16" RADIUS.

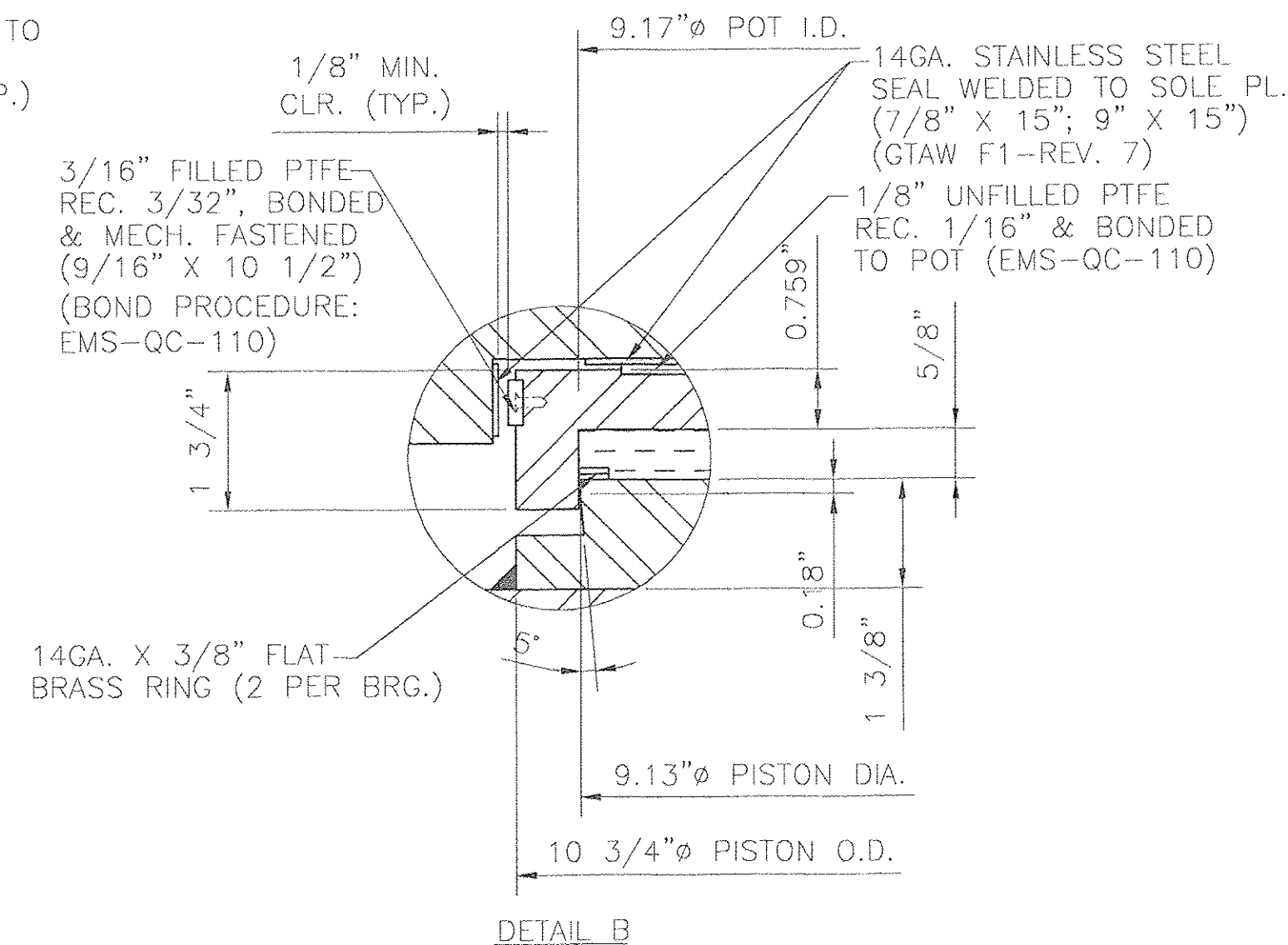


DETAIL A



ANCHOR BOLT DETAIL
N.T.S.

1 1/2" ASTM A307 SWEDGED ANCHOR BOLT WITH 11" THREADS ONE END, TWO HEAVY HEX NUTS, TWO ASTM F844 FLAT WASHERS AND ONE ASTM F844 BEVELED WASHER. ALL GALVANIZED.
PIER 1: 27" LONG
ABUTS. 1 & 2: 25" LONG



DETAIL B

STATE OF VERMONT
AGENCY OF TRANSPORTATION
BRIDGE NO. 25 & 25A
PROJECT: SEARSBURG - WILMINGTON
PROJECT NO. NHF 010-K(18)
VT. RTE. 9 OVER DEERFIELD RIVER

COSMEC, INC. 70 SOUTH STREET
WALPOLE, MA. 02081

SCALE: 1/8"=1" DRAWN BY: NH CHECKED BY: MCM
SHEET 2 OF 4 DATE: 8.5.02 DATE: 8.22.02

COSMEC POT BEARINGS

CUSTOMER: BECK & BELLUCCI, INC. S.O. NUMBER: 59599 DRAWING NUMBER: 3702 REV. 1

REV.	ADDED NOTE & REVISED SOLE PLATE THICKNESS & BEARING HEIGHTS	BY	DATE	OK'D	DATE
Δ		NH	10.2.02		

RECEIVED
OCT 16 2002
REG. BY: R.R. DATE: 10-17-02