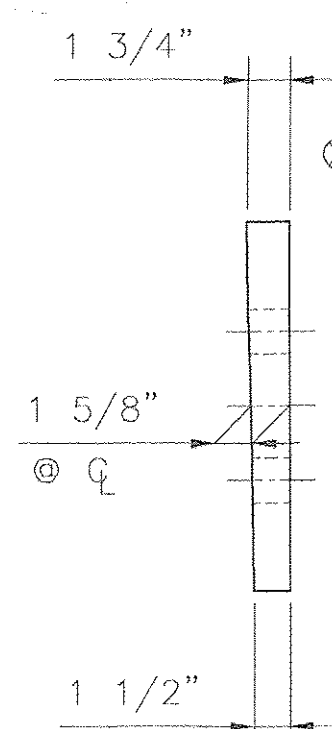
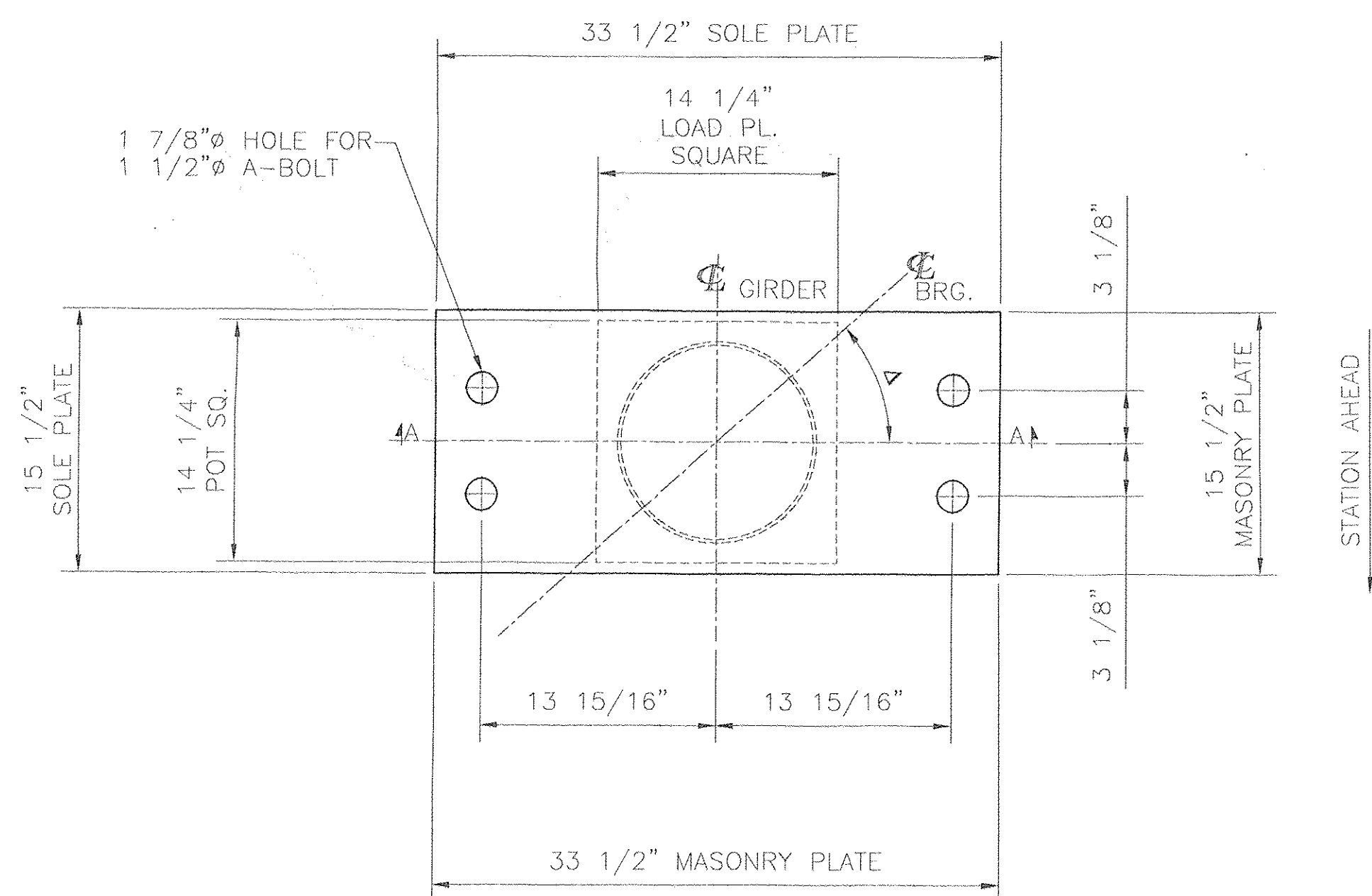
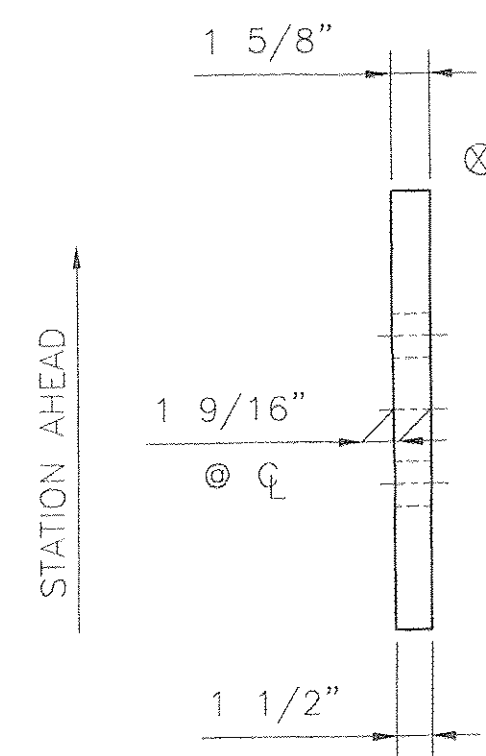
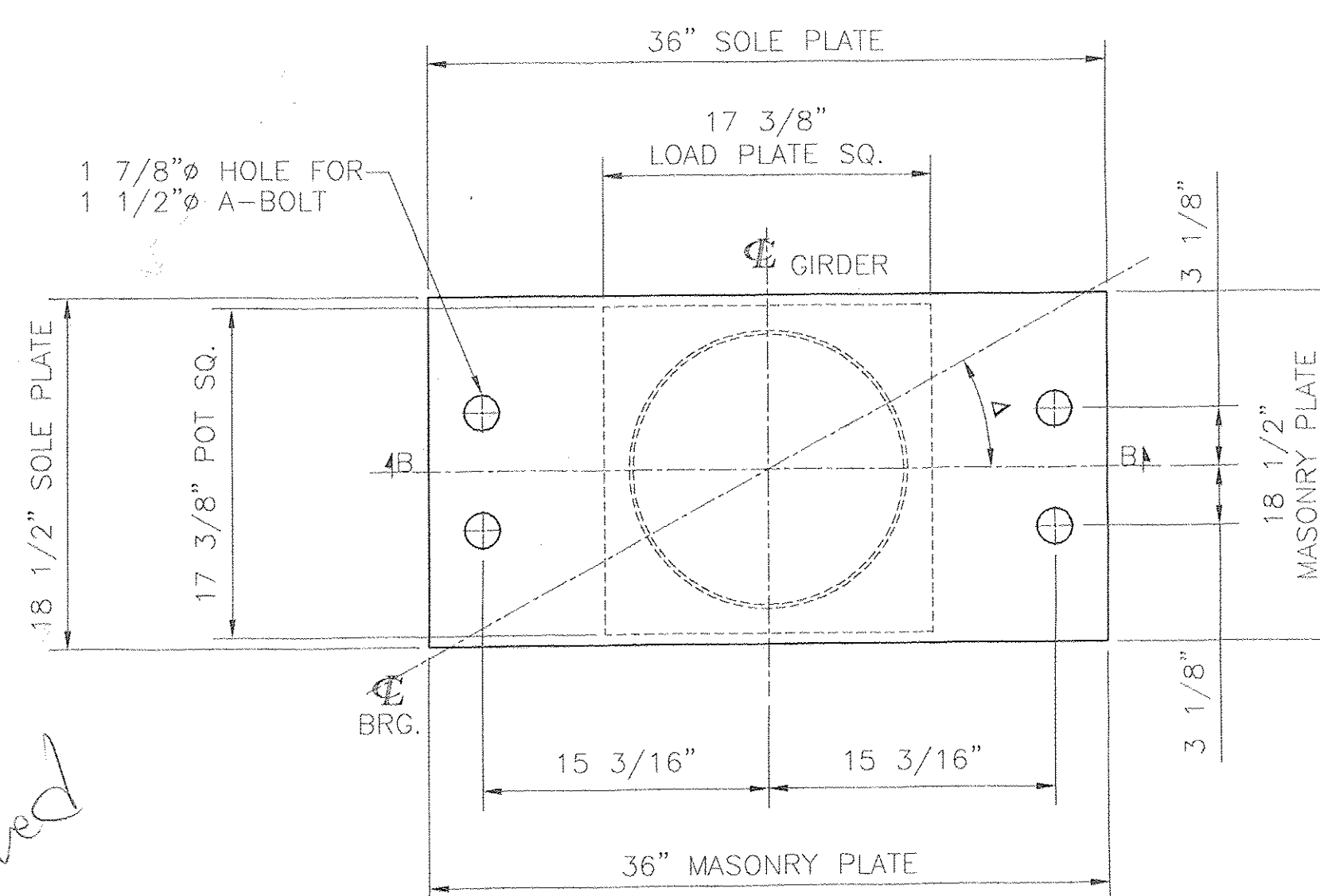


SKEW ANGLE Δ: 41°-37'-48"

SKEW ANGLE Δ: 28°-40'-30"



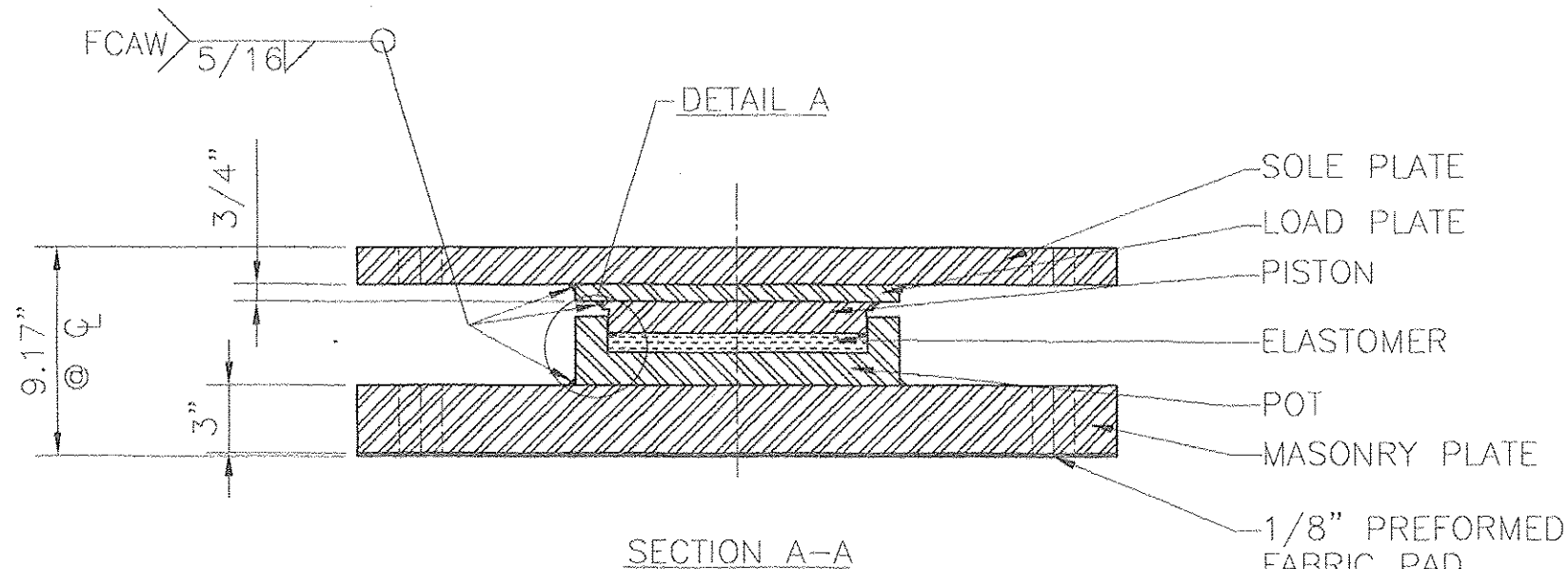
SIDE ELEVATION
BEVELED SOLE PLATE ONLY



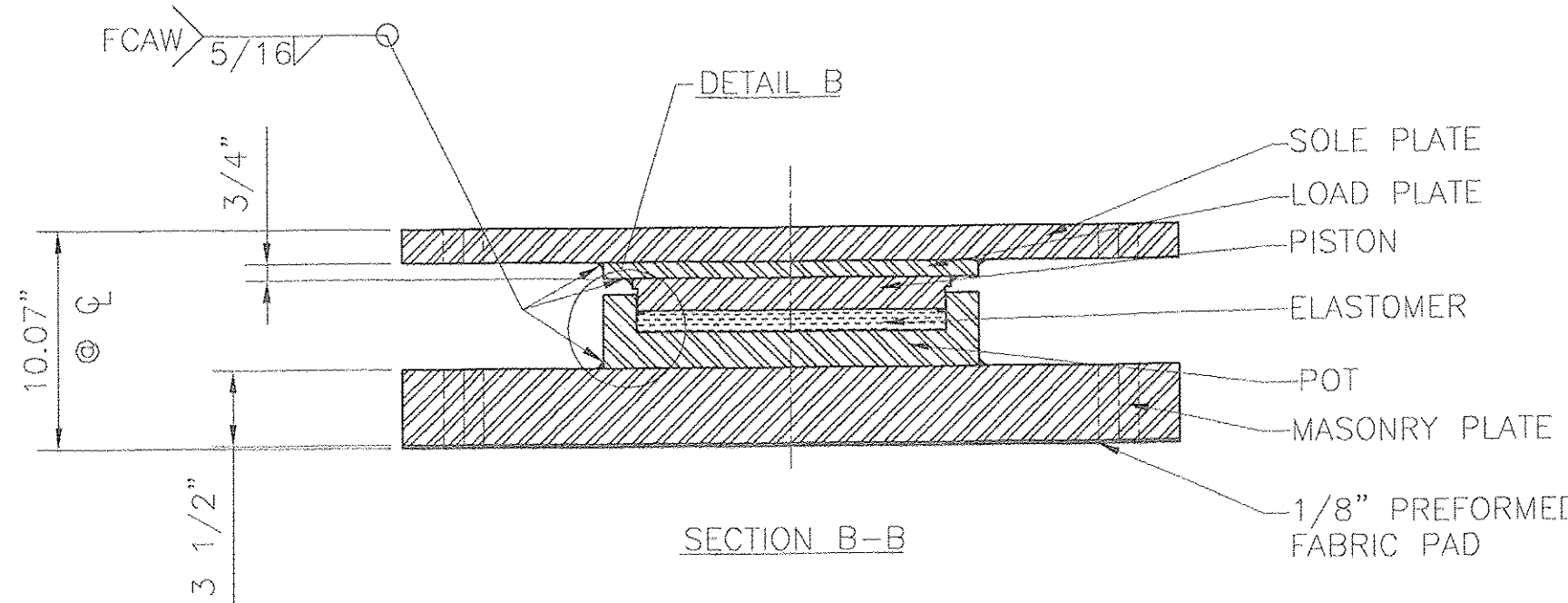
SIDE ELEVATION
BEVELED SOLE PLATE ONLY

PLAN

PLAN



SECTION A-A



SECTION B-B

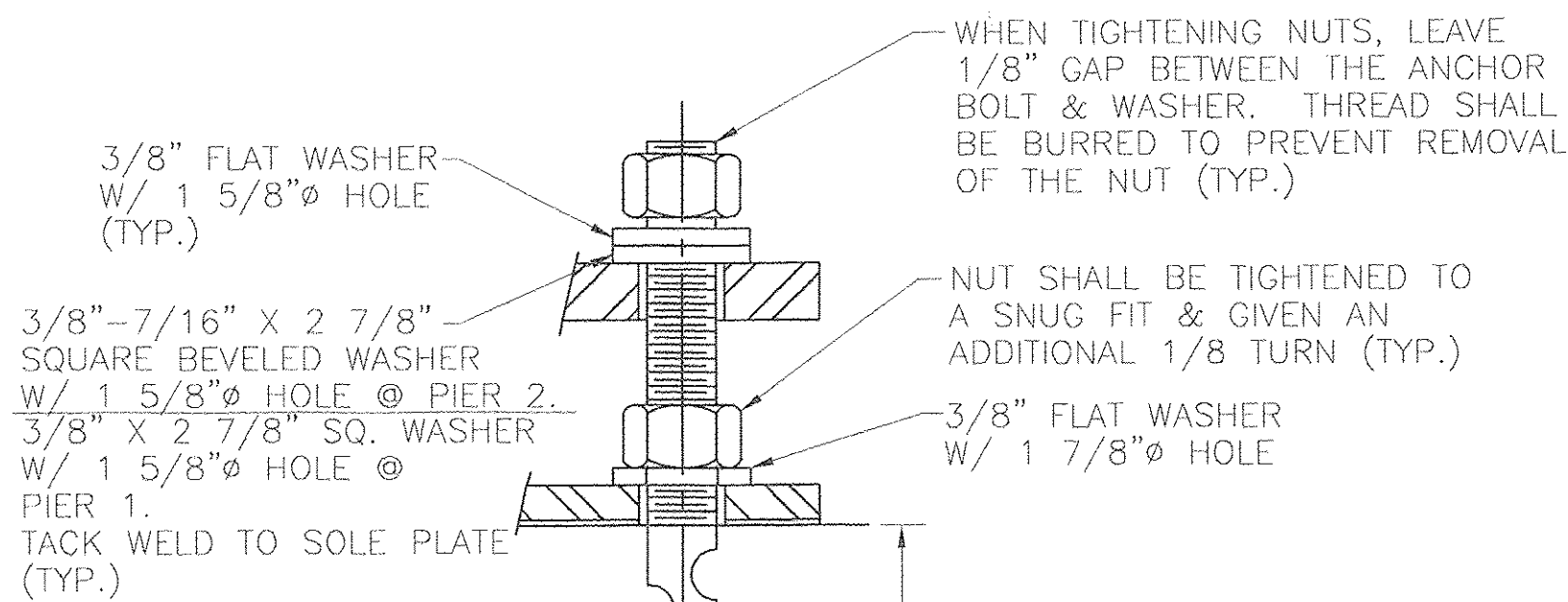
FIXED POT BEARING
LOCATION - BRIDGE 25, PIER 2
QUANTITY - 5
VERTICAL LOAD - 361 KIPS
HORIZONTAL LOAD - 112 KIPS

FIXED POT BEARING
LOCATION - BRIDGE 25A, PIER 1
QUANTITY - 5
VERTICAL LOAD - 565 KIPS
HORIZONTAL LOAD - 143 KIPS

MATERIAL:
STEEL - ASTM A709 GR 50 ZINC METALIZED. MASONRY PLATE TO BE CVN.
ELASTOMER - AASHTO 50 DUROMETER NEOPRENE PER VT AOT SECTION 731.03. (LUBRICATED USING DOW CORNING COMPOUND NO. 4 SILICONE GREASE)
BRASS RINGS - ASTM B36 HALF HARD
PREFORMED FABRIC PAD - AASHTO 18.4.10.1 DIV. II

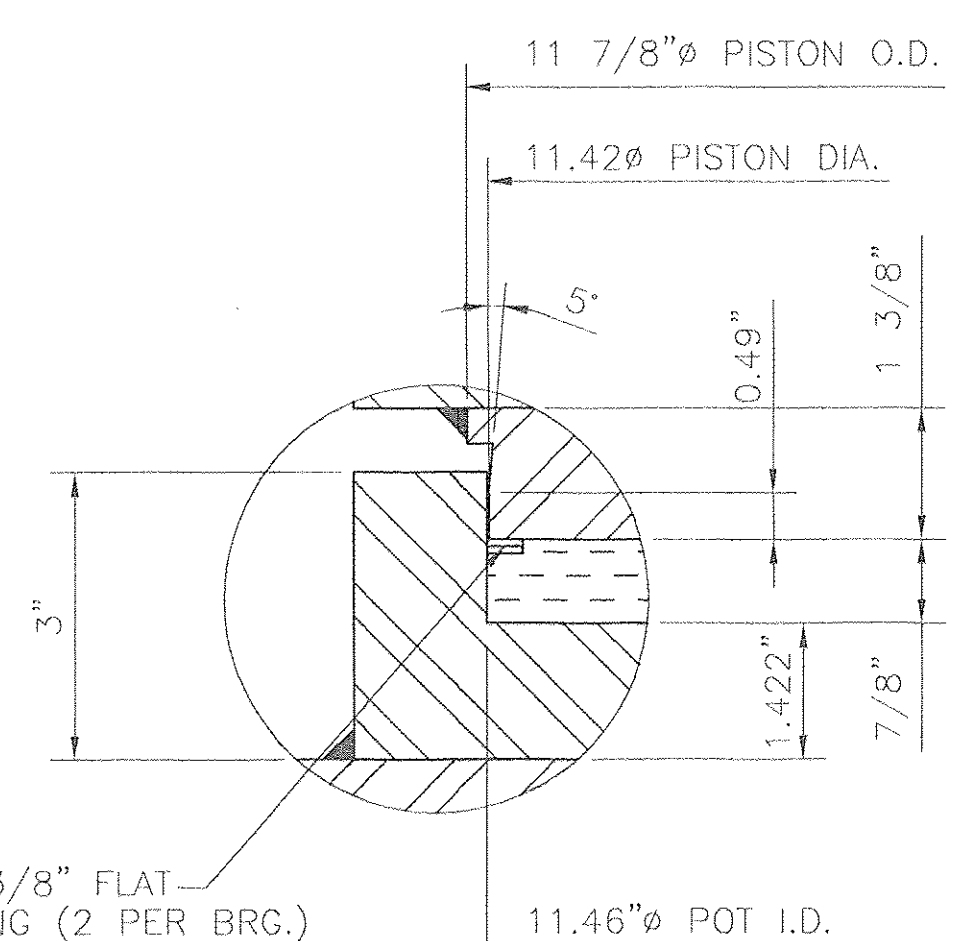
- NOTES:**
- DESIGN ROTATION: 0.02 RADS.
 - BEARINGS MUST NOT BE DISASSEMBLED.
 - BEARINGS SHALL BE SHIPPED IN DUST & MOISTURE PROOF COVERS FOR PROTECTION DURING TRANSIT & STORAGE.
 - LOCATION OF FABRICATION PLANT - 70 SOUTH ST. WALPOLE, MA 02081
 - COSMEC INC. REPRESENTATIVE - MR. MATT McANDREWS (508-668-6600)
 - ALL STEEL COMPONENTS SHALL BE METALIZED AS PER SECTION 531.04(b) AND 506.15. AFTER THE BEARINGS ARE METALIZED, THEY SHALL BE SEALED WITH AN APPROVED PRIMER AS SPECIFIED IN SUBSECTION 506.15(c).
 - Ø MARK THICK END OF BEVEL
 - PRIOR TO METALIZING, ALL CORNERS & EDGES OF STEEL PLATES, SHAPES, ETC., SHALL BE GROUND TO A 1/16" RADIUS.

Please Note: Approved bearing hts. will require bridge seat elevation changes on all bridges.

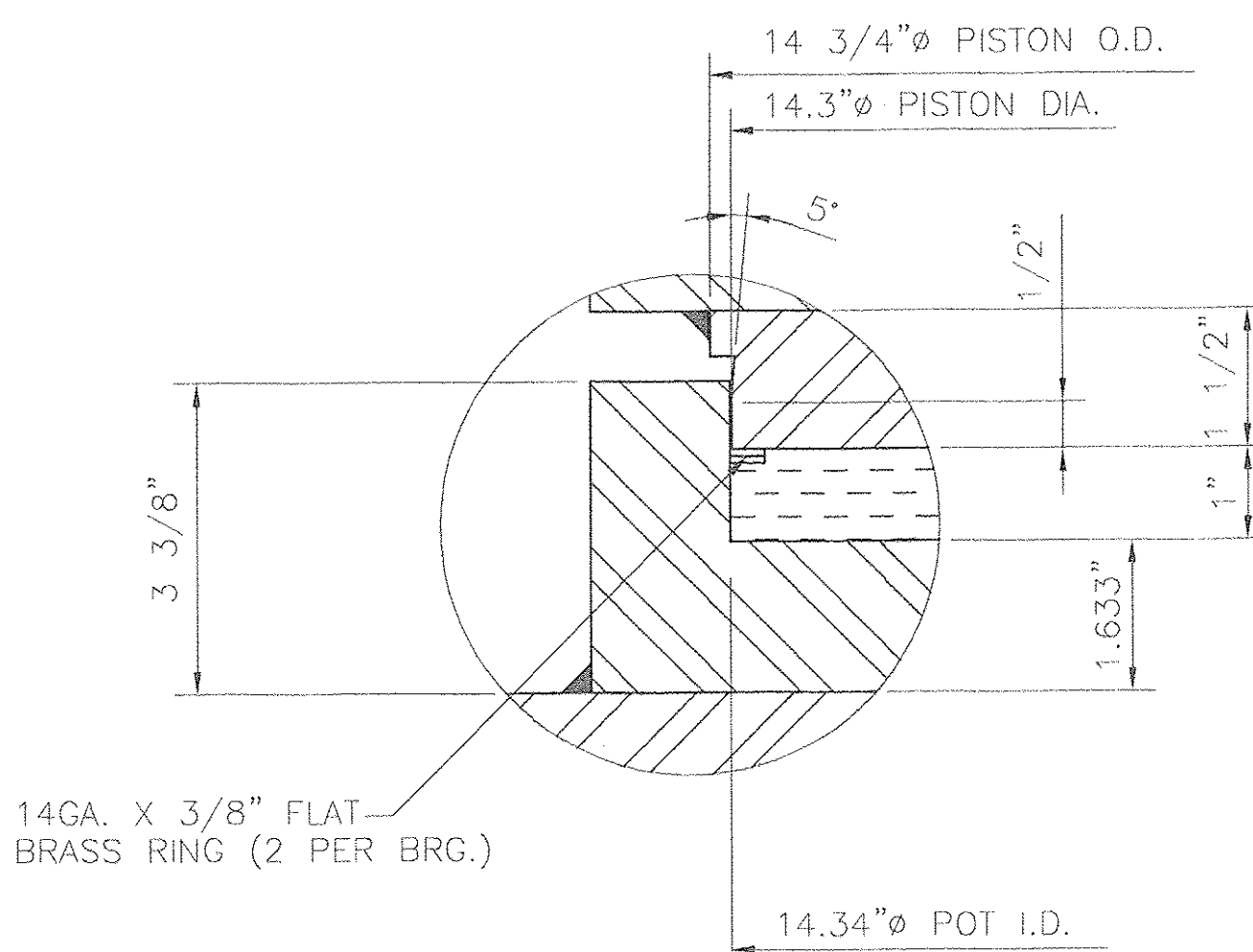


ANCHOR BOLT DETAIL
N.T.S.

1 1/2" Ø X 28 1/2" LONG ASTM A307 SWAGED ANCHOR BOLT WITH 11" THREADS ONE END, TWO HEAVY HEX NUTS, TWO ASTM F844 PLATE WASHERS AND ONE ASTM F844 BEVELED WASHER. ALL GALVANIZED.



DETAIL A



DETAIL B

VTrans - PDD
OCT 16 2002
Structures Design Section

RECEIVED
OCT 16 2002
BY R.R.W. DATE 10-17-02

STATE OF VERMONT
AGENCY OF TRANSPORTATION

BRIDGE NO. 25 & 25A
PROJECT: SEARSBURG - WILMINGTON
PROJECT NO. NHF 010-K(18)
VT. RTE. 9 OVER DEERFIELD RIVER

COSMEC, INC. 70 SOUTH STREET
WALPOLE, MA. 02081

SCALE: 1/8"=1" DRAWN BY: NH CHECKED BY: MCM
SHEET 1 OF 4 DATE: 8.5.02 DATE: 8.21.02

COSMEC POT BEARINGS

REV.	BY	DATE	CHK'D	DATE
Δ	NH	10.2.02		

CUSTOMER	S.O. NUMBER	DRAWING NUMBER	REV.
BECK & BELLUCCI, INC.	59599	3701	1