

E Pipe

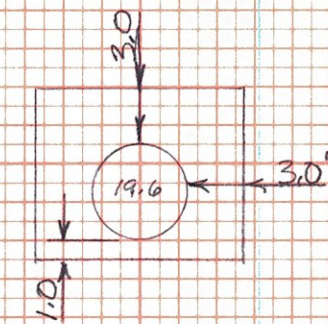
E Pipe

E Pipe

Item 204.25 Structure Excavation

Sta	Area	Dist	Vol
-113 Butt	14 ft <sup>2</sup>	8 ft	13.5
-105	77	7	23.7
-98	104	14	59.6
-84	126	37	198.9
-47	157	10	69.9
-31	79	60	18.0
-25 Butt	30	0	
			370.6 cy 9/16/02

Item 204.30 Granular Backfill for Structures

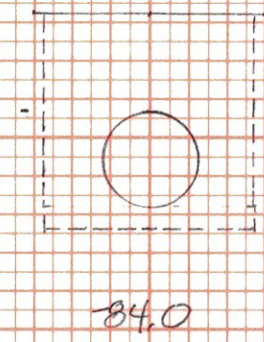


$79.4 \text{ ft}^2 \times \frac{135 \text{ ft}}{127} = 397 \text{ cu yd}$   
 11/17/03  
 35K

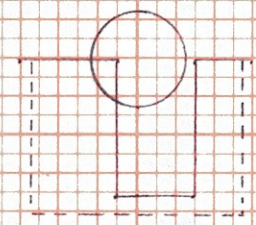
Item 602.15 Cement Ribble Masonry

See Std 0-2 12.3 cy 9/16/02 11/17/03 35K

Item 601.026B	60" CAAP	164 LF	11/17/03
Item 601.0025	24" CSP	2 LF	35K
Item 601.0015	18" CSP	6 LF	35K

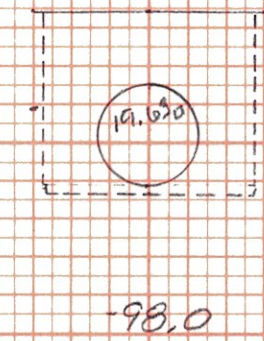


1510

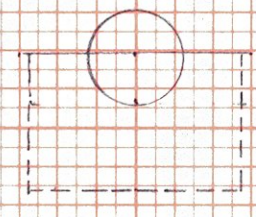


130.0

-31.0 (ahead)

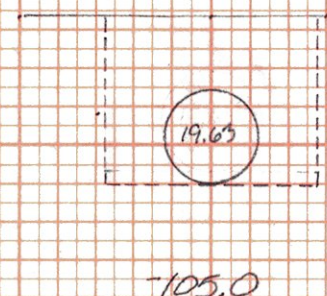


1510



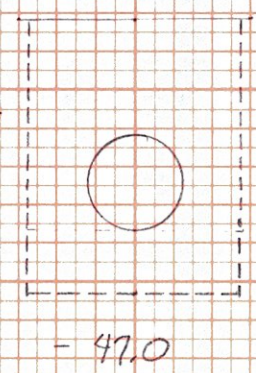
150.0

-31.0 (back)



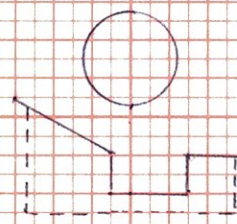
1520

1510

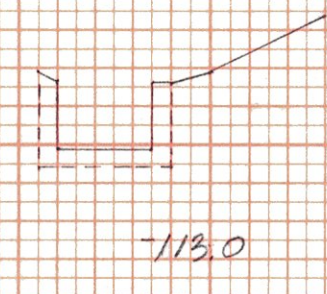


1510

1500



-25.0



1520

1510

-113.0

system completed 11/6/03

1514.10

1508.00  
1509.0

12.0' = 0.116%

272+15

New 60"x164" CAAP  
w/ 6" Vertical Riser  
w/ Stone Fill Type II @ inlet

See book TA p. 55  
See Dr. Bk. 26 p. 22 and Item Detail and Dr. Sh. #2 of 3

1494.00 Maximum Regulated Pool

Stone Fill Type III mod. (Select blasted ledge from Project)

Type II Stone (10 x 10 x 4) @ 7 = 14.8 cy (min.) see 6/14/03 outlet ✓  
 Type I Stone (10 x 10 x 3) @ 7 = 3.7 cy (min.) see 6/14/03 inlet ✓  
 BA 4-8-04

Searsburg-Wilmington  
project drainage sheet 19 of 27  
New 60" 272+15 & CAAP  
w/ 6" Riser ✓

SEARSBURG-WILMINGTON  
11/17/03

FINAL SURVEY BY DATE  
SURVEYED BY DATE  
PLOTTED BY DATE  
NOTE BOOK NO.  
AREAS CHECKED

ORIGINAL SURVEY BY DATE  
SURVEYED BY DATE  
PLOTTED BY DATE  
NOTE BOOK NO.  
AREAS CHECKED