

FINAL SURVEY BY DATE  
 SURVEYED BY DATE  
 PLOTTED BY DATE  
 TEMPLATE NO. DATE  
 NOTE BOOK NO. DATE  
 AREA CHECKED BY DATE

ORIGINAL SURVEY BY DATE  
 SURVEYED BY DATE  
 PLOTTED BY DATE  
 TEMPLATE NO. DATE  
 NOTE BOOK NO. DATE  
 AREA CHECKED BY DATE

228+00 E  
 204.30 Gr. BACKFILL for Structures  
 $\text{Pipe } ((60' \times 2.5' \times 3.8') - (\frac{24.5^2}{4} \times 6')) / 27 = 17.6 \text{ cy}$  SEE 9/18/03  
 M.W.#. 2/11/04

Pipe Tr. EXCAVATION =  $7.0' \times 3.8' \times 1/27 = 9.9 \text{ cy}$  SEE 6/26/03  
 Tr. ROCK =  $23.5' \times 3.8' \times 1/27 = 3.3 \text{ c.y. F.M. Boulder}$   
 Tr. Earth =  $6.3 \text{ c.y. SEE 6/26/03}$   
 0.6 M.W.#. 2/11/04

Total Tr. Rock =  $4.2 + 3.3 = 7.5 \text{ c.y. 1-2-04 B.B.}$

D.I. Tr. EXCAV =  $\frac{11.6^2}{4} \times 1/27 = 4.2 \text{ cy}$   
 Tr. ROCK =  $4.2 \text{ cy}$   
 Tr. Earth =  $0.6 \text{ cy}$   
 SEE 6/26/03  
 M.W.#. 2/11/04

228+00  
 NEW 18" CPEP (54) X 66'  
 SEE BK 2A pg. 136 and Item Detail and Dr. Sh. #2 of 3

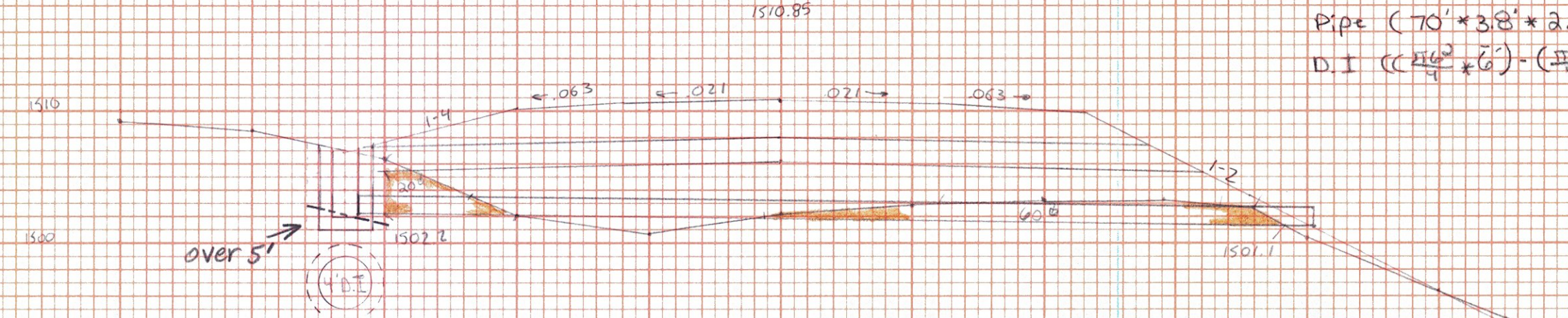
System All W.F.I.I

226+75  
 NEW 18" CPEP 40' Length  
 BK. 2A, Pg. 132 and Item Detail and Dr. Sh. #2 of 3

225+25  
 REMOVAL 18" RCP  
 SEE BK 2A pg. 130 and Item Detail and Dr. Sh. #2 of 3

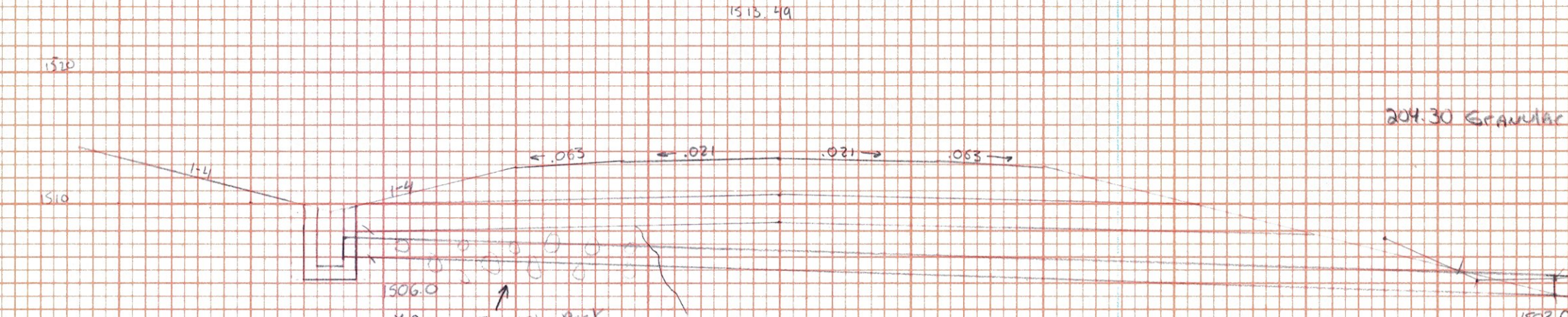
225+25  
 REMOVAL 18" RCP  
 SEE BK 2A pg. 130 and Item Detail and Dr. Sh. #2 of 3

Pipe TRENCH EXCAVATION =  $(60' \times 3.8' \times 1/27) - (\frac{24.5^2}{4} \times 6') / 27 = 11.3 \text{ cy}$  SEE 9/18/03  
 M.W.#. 2/11/04



D.I. TRENCH EXCAVATION =  $\frac{11.6^2}{4} \times 1/27 = 5.2 \text{ cy}$   
 Tr. ROCK =  $5.2 \text{ cy}$   
 Tr. Earth =  $0.6 \text{ cy}$   
 SEE 6/26/03  
 M.W.#. 2/11/04

236+36  
 NEW 18" CPEP (54) X 76'  
 SEE BK 2A pg. 135 and Item Detail and Dr. Sh. #2 of 3



D.I. TRENCH EXCAVATION =  $\frac{11.6^2}{4} \times 1/27 = 5.2 \text{ cy}$   
 ALL Tr. ROCK =  $5.2 \text{ cy}$  SEE 9/18/03  
 Tr. Earth =  $0.6 \text{ cy}$  M.W.#. 2/11/04

233+50  
 NEW 18" CPEP (54) X 116'  
 SEE BK 2A pg. 134 and Item Detail and Dr. Sh. #2 of 3

204.30 Gr. BACKFILL for Structures

Pipe  $(70' \times 3.8' \times 2.5') - (\frac{24.5^2}{4} \times 70') / 27 = 20.0 \text{ cy}$  SEE 9/18/03  
 D.I.  $((\frac{11.6^2}{4} \times 6') - (\frac{24.5^2}{4} \times 6')) / 27 = 3.5 \text{ cy}$  M.W.#. 2/11/04

Total =  $23.5 \text{ cy (M.F.)}$  SEE 9/18/03 M.W.#. 2/11/04  
 Additional D.I. fill =  $14.7' \times 2' \times 6' = 17.6 \text{ c.y. dist. around circular D.I.}$   
 GRAND TOTAL =  $30.0 \text{ c.y. (M.F.)}$  SEE 9/18/03 M.W.#. 2/11/04

Total Tr. Earth =  $11.3 + 7.6 = 18.9 \text{ c.y.}$

204.30 Granular BACKFILL for Structures  $((\frac{60^2}{4} \times 3.8' \times 2.5') - (\frac{24.5^2}{4} \times 38')) / 27 = 25.2 \text{ cy}$   
 D.I. 204.30  $((\frac{11.6^2}{4} \times 5') - (\frac{24.5^2}{4} \times 5')) / 27 = 2.9 \text{ cy}$   
 Total =  $28.1 \text{ cy}$  SEE 7/16/03  
 M.W.#. 2/11/04

Pipe TRENCH EXCAVATION =  $270' \times 2.8' \times 1/27 = 38.0 \text{ cy}$  SEE 7/16/03  
 Tr. ROCK =  $8.4 \text{ cy}$  M.W.#. 2/11/04  
 Total Tr. Earth =  $29.6 \text{ cy}$  SEE 7/16/03  
 M.W.#. 2/11/04

Total Tr. Rock =  $5.2 + 8.4 = 13.6 \text{ c.y.}$

SEARSBURG - WILMINGTON  
 DRAINAGE SHEET 11 OF 27

- 225+25 REMOVAL 18" RCP
- 226+75 NEW 18" CPEP CC
- 228+00 NEW 18" CPEP
- 232+28 REMOVAL 24" DWP
- 233+50 NEW 18" CPEP
- 236+36 NEW 18" CPEP