

FINAL SURVEY  
 SURVEYED BY  
 PLOTTED BY  
 NOTE BOOK NO.  
 AREAS CHECKED

ORIGINAL SURVEY  
 SURVEYED BY  
 PLOTTED BY  
 NOTE BOOK NO.  
 AREAS CHECKED

1530

1520

1510

1500

T.R. for D.I.

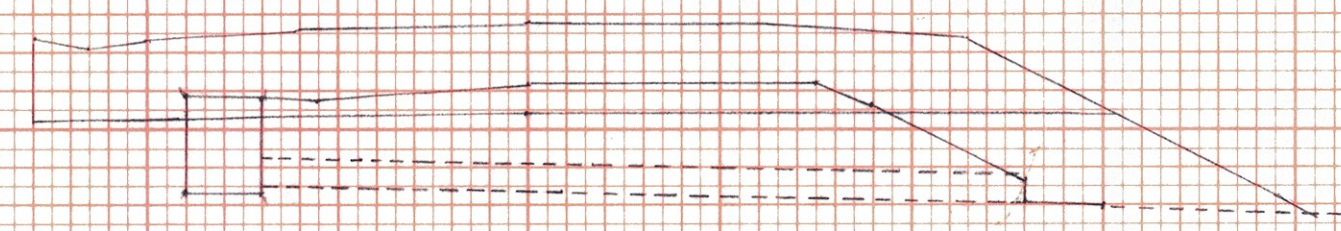
4x4x5=80/37  
 = 3.0 cy  
 JSE 6/16/03

219+60

Remove 15" RCP w/OE  
 SEE DRAINAGE SHEET 2A pg. 30 and Item Detail and Dr. #2 of 3

Pipe removal all w/ cut.  
 NO T.E. PAID. SEE 6/16/03

1515.65



1530

1520

1510

1500

1519.20

Limit of 204.90

see Dr. BK 2A pg. 28+29 and Item Detail and Dr. Sh. #1 of 3  
 No quantities on 7, pg 28. Remove 218+49 18" RCP  
 see quantities below 7, pg 159 New 86' 218+50 30" CPEP w/OE

TRUCK EARTH EXCAVATIONS

1/2 x 48' x 300' = 58.7 cy 8/13/02 CT 1

GRAVELLULAR BACKFILL FOR STRUCTURES

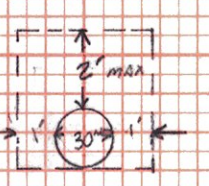
AVERAGE LENGTH = 650' FIELD MEASURED

1/2 x 650' x 15.35' = 36.3 cy

TYPE II STONE

6' x 10' = 60'²

60'² x 1' = 60'³ = 2.2 cy FIELD MEASURED



AREA = 4.5' x 4.5' = 20.25'²  
 = 20.25'² x 4' = 81.0'³  
 = 15.35'³

1530

1520

1510

1500

1526.29

210+30

Pipe Removal  
 T.E. PAID. 6/16/03

2.30' x 15' x 1/2' = 2.21'³

2.30' x 15' x 1/2' = 2.21'³

Remove 30" CPEP w/headwall  
 SEE BK 7 pg 94  
 see Dr. BK 2A pg 30 and Item Detail and Dr. Sh. #1 of 3

8/13/03 6/16/03

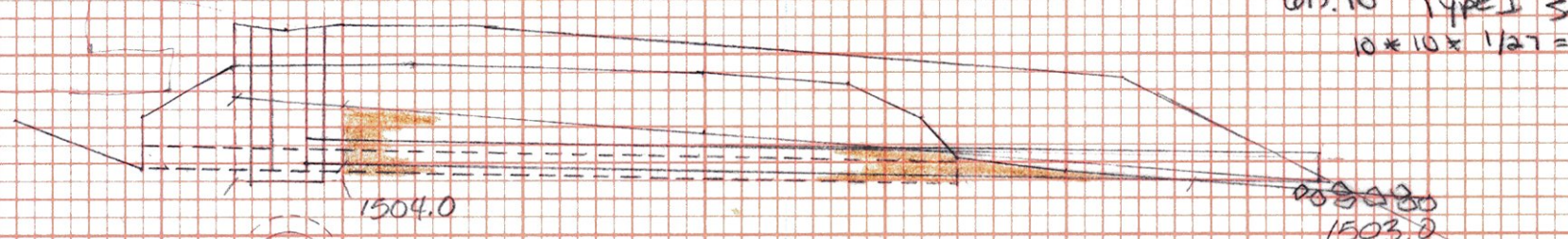
1530

1520

1510

1500

1510.60



613.10 Type I Stone Fill  
 10 x 10 x 12 = 3.75 cy (M.F.) 7/19/02 JSE

2/10/04 M.W.H.

225+40

Replace 15" RCP w/ New 18" x 20" CPEP  
 see Dr. BK 2A pg 104 and Item detail and Dr. Sh. #2 of 3

\* Pipe Removal all w/ cut  
 AREA NO T.E. PAID. JSE 6/16/03

Pipe Excavation = 10' x 3' x 1/2' = 14.8 cy

Backfill = 0.0 cy

Reattach = 14.8 cy

D.I. to excavate = 1/2' x 4' x 1/2' = 3.2 cy

Trench = 4.0 cy

Trench = 4.0 cy

SEE 6/16/03  
 M.W.H. 2/10/04

Th Earth Pipe 14.8 cy M.W.H. 2/10/04

" " DI 14.2 cy

19.0 cy

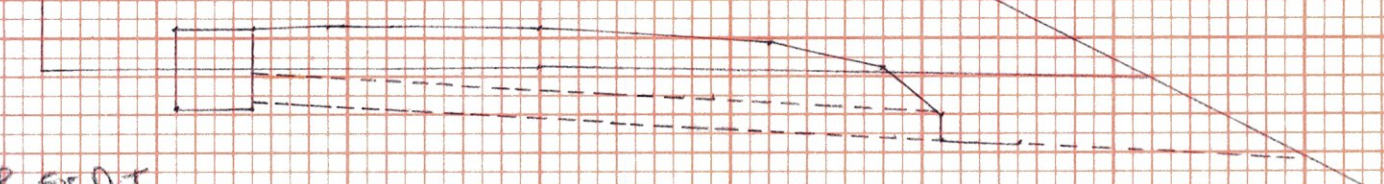
1530

1520

1510

1500

1513.55



T.R. for D.I.

4x4x4=64/37

= 1.7 cy

JSE 6/16/03

M.W.H. 2/10/04

221+15

Remove 15" RCP w/OE

see Dr. BK 2A pg 30 and Item Detail and Dr. Sh. #2 of 3

Pipe removal all w/ cut. T.E. PAID. SEE 6/16/03 - Common Ex.

Searsburg - Wilmington  
 Drainage sheet 11 of 27

Remove 210+30  
 Remove 210+49  
 New 210+50  
 Remove 219+60  
 Remove 221+15  
 Replace 223+40

SEARSBURG - WILMINGTON  
 NHFD-10-1(18)