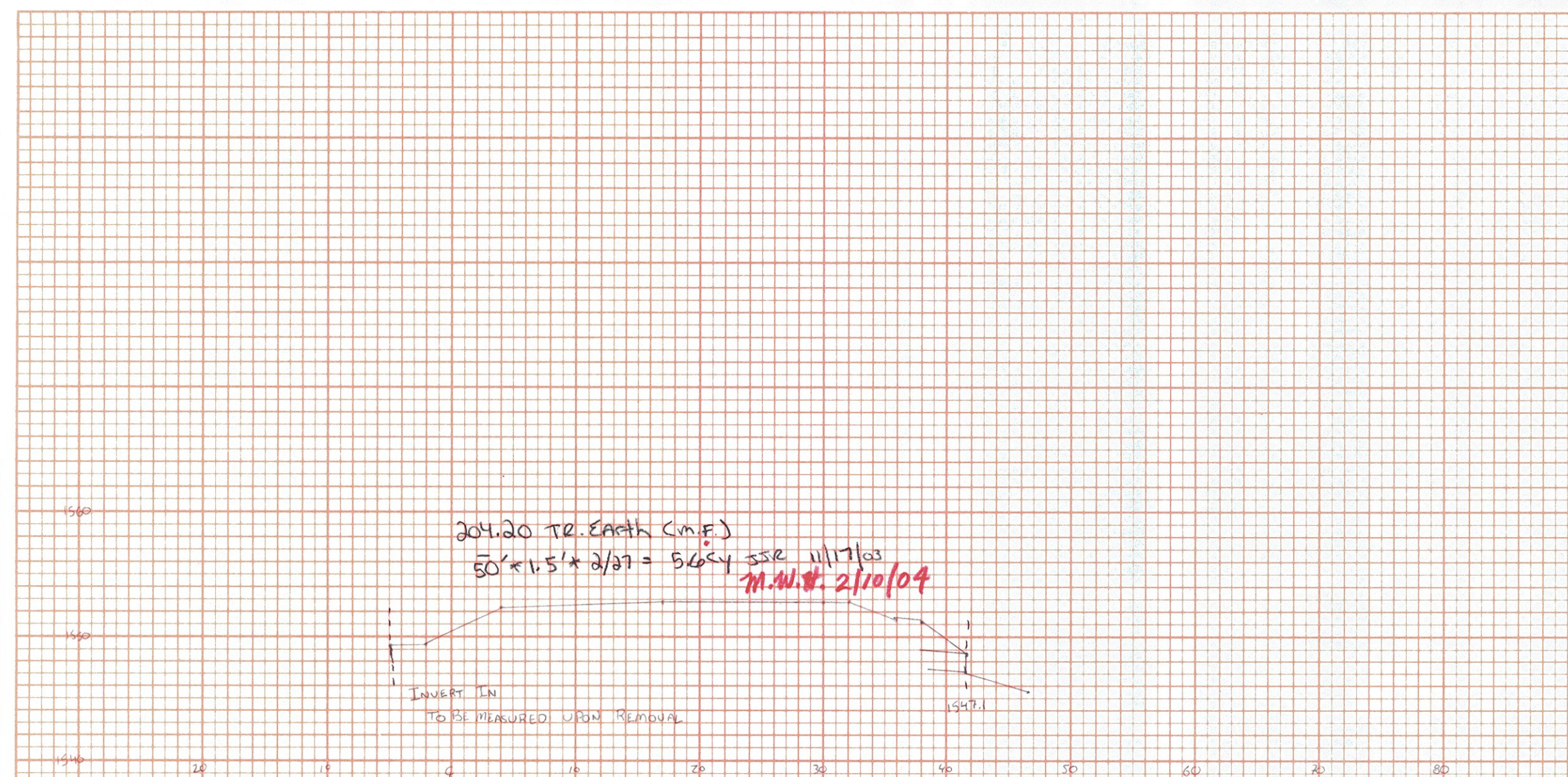
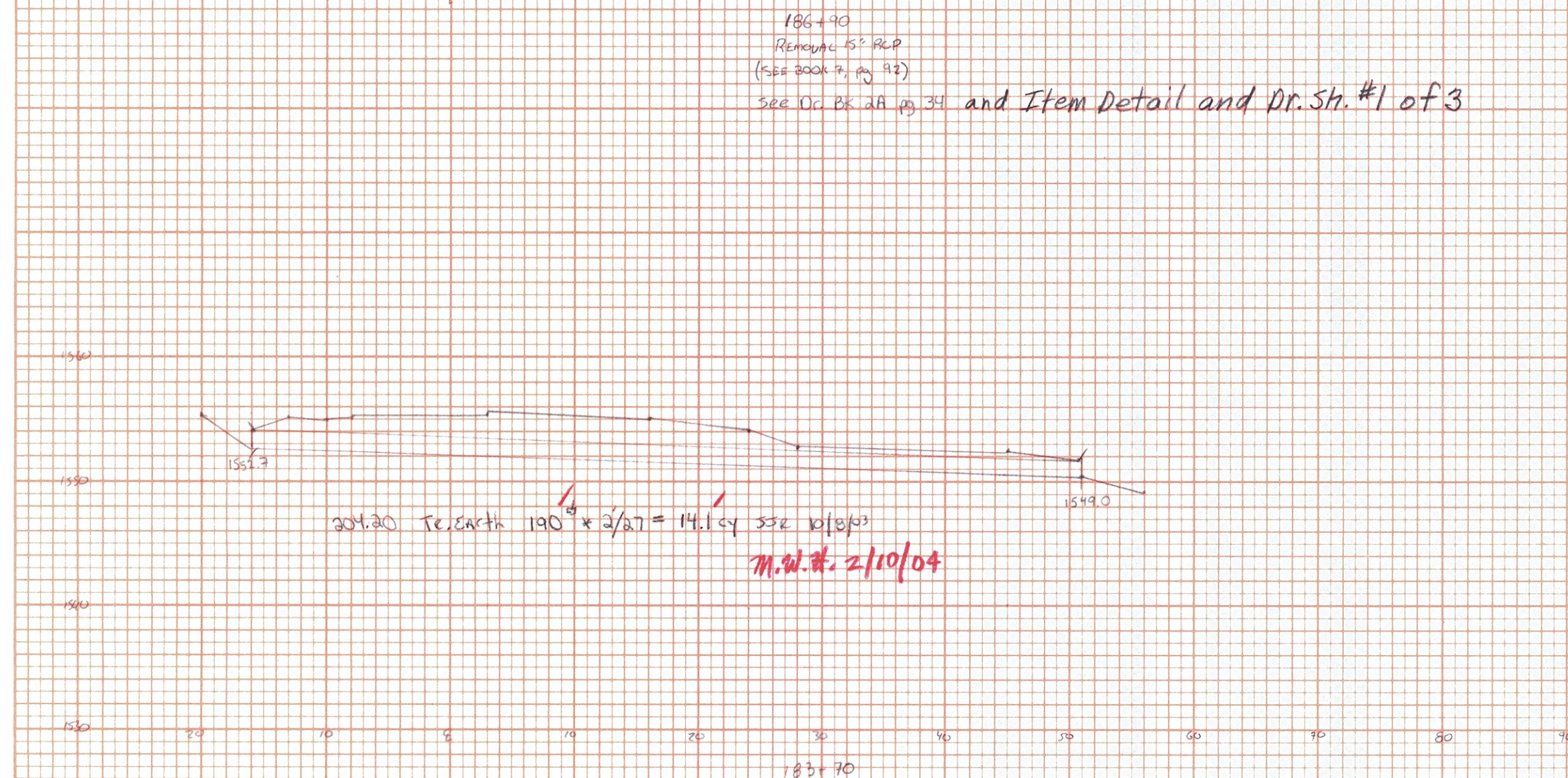


FINAL SURVEY
 SURVEYED BY: _____
 PLOTTED BY: _____
 NOTE BOOK NO. _____
 AREAS CHECKED: _____

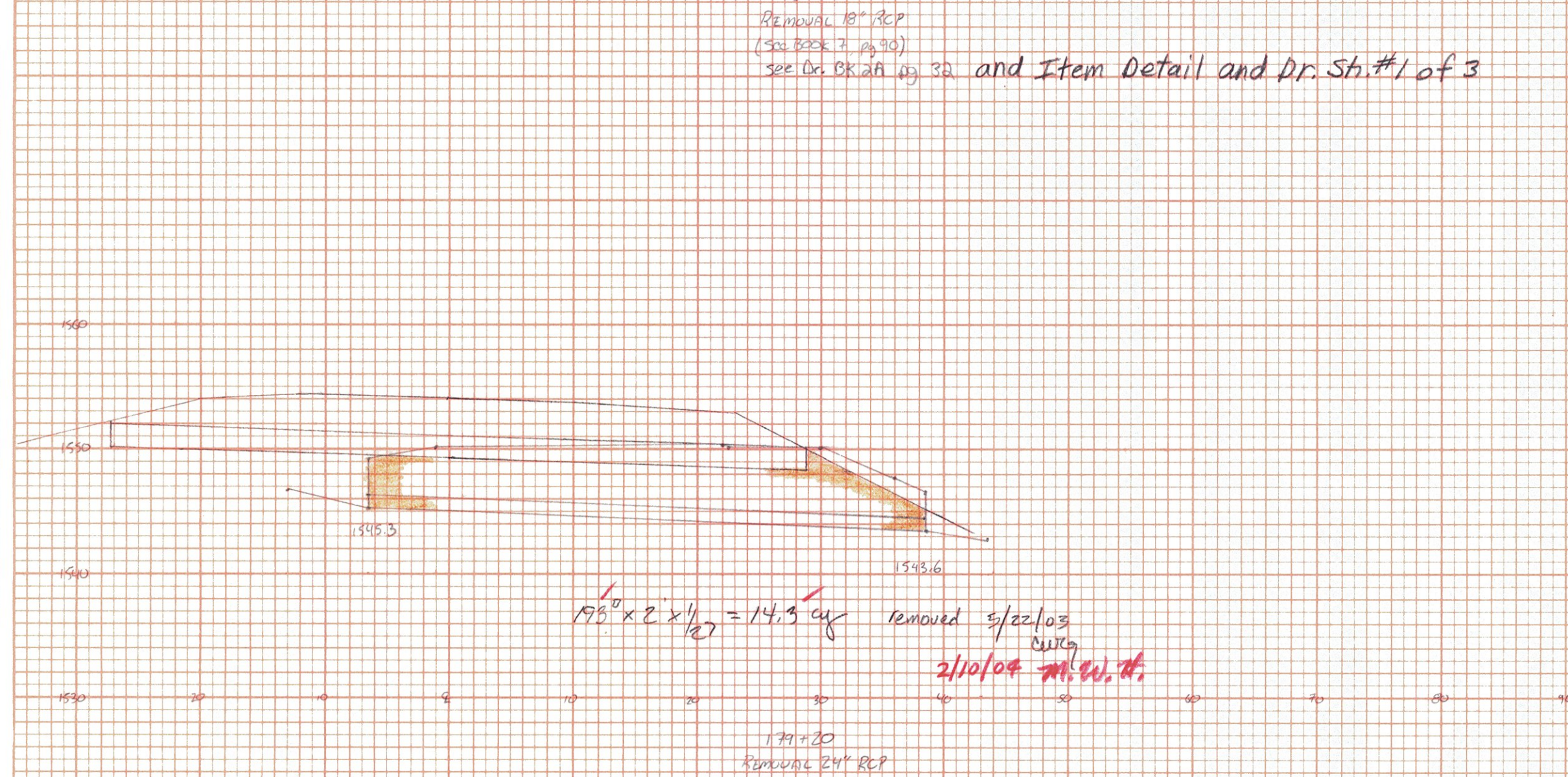
ORIGINAL SURVEY
 SURVEYED BY: _____
 PLOTTED BY: _____
 NOTE BOOK NO. _____
 AREAS CHECKED: _____



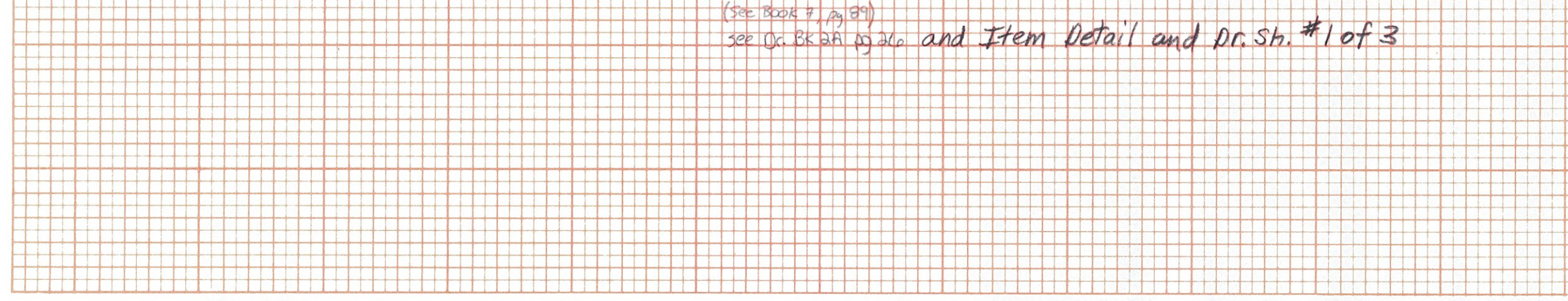
186+70
 Remove 15" RCP
 (See Book 7, pg 12)
 See Dr. BK. 2A, pg 34 and Item Detail and Dr. Sh. #1 of 3



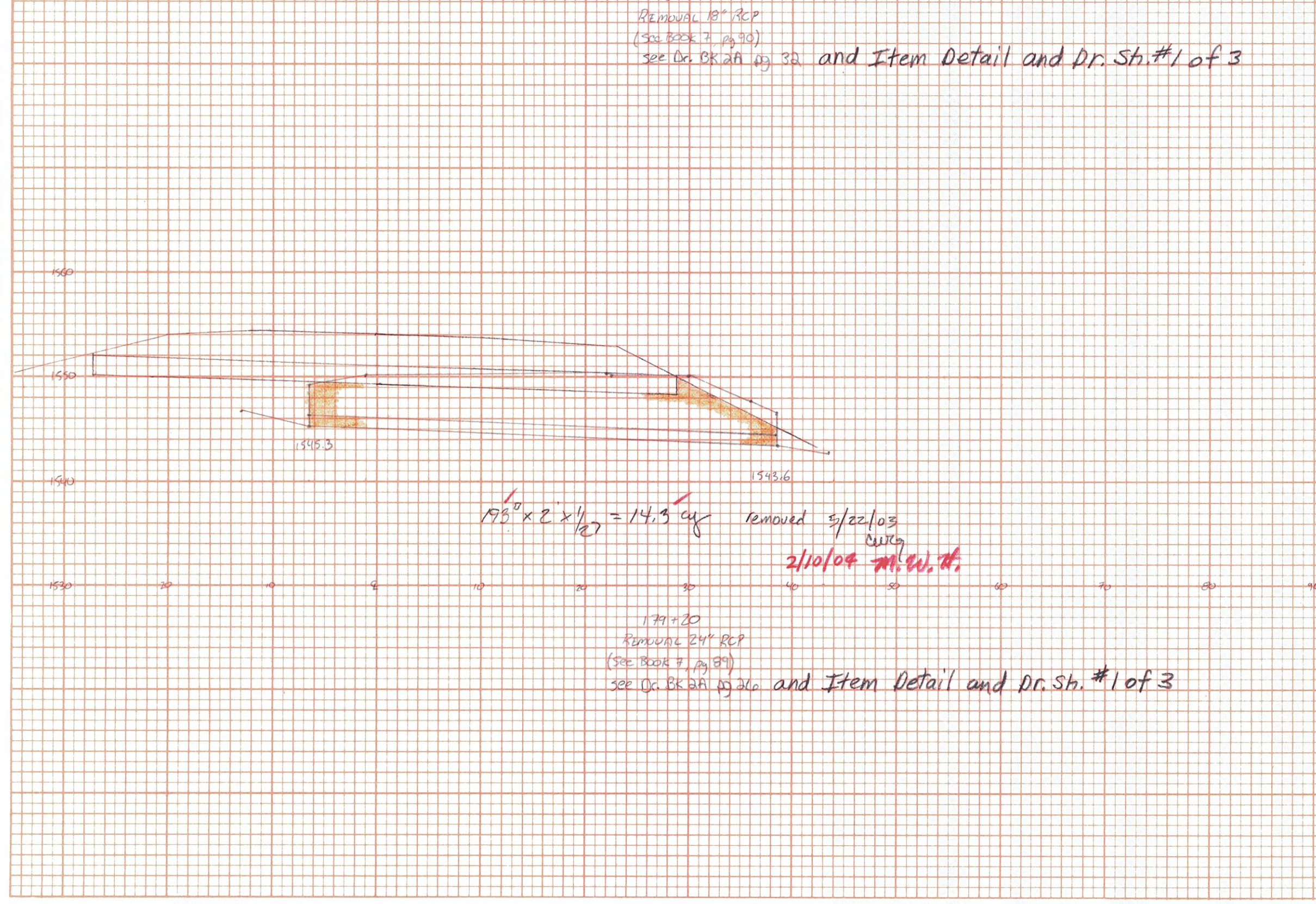
183+70
 Remove 18" RCP
 (See Book 7, pg 30)
 See Dr. BK. 2A, pg 32 and Item Detail and Dr. Sh. #1 of 3



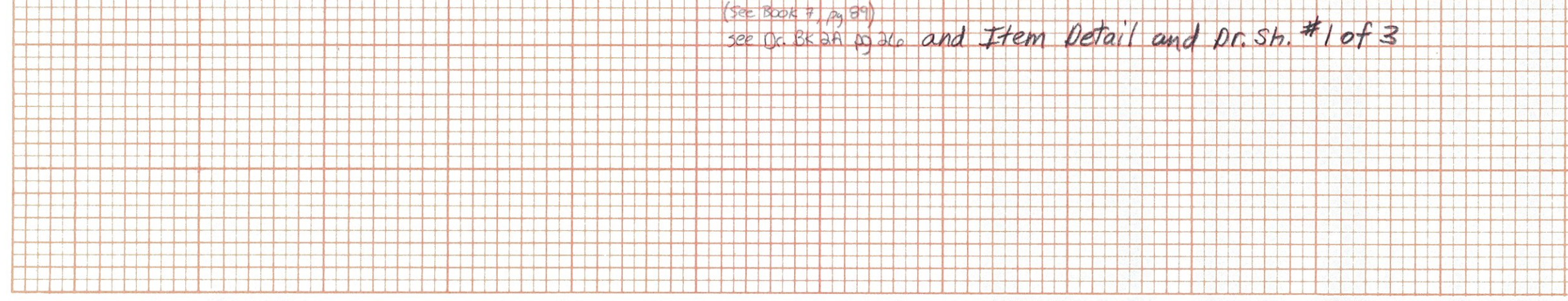
171+20
 Remove 24" RCP
 (See Book 7, pg 87)
 See Dr. BK. 2A, pg 26 and Item Detail and Dr. Sh. #1 of 3



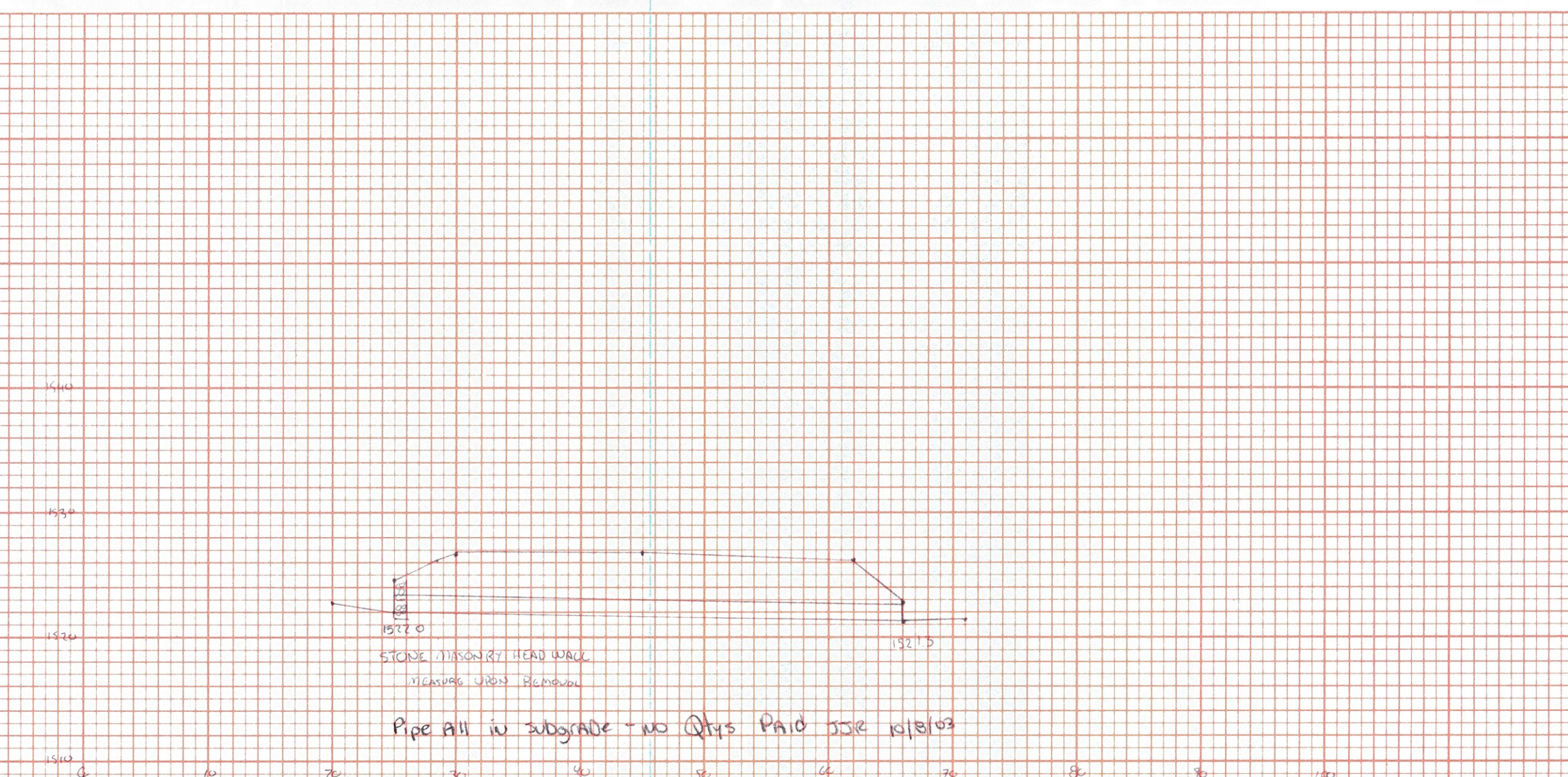
174+35
 Remove 18" RCP
 (See Book 7, pg 34)
 See Dr. BK. 2A, pg 44 and Item Detail and Dr. Sh. #1 of 3



190+43
 Remove 15" RCP
 (See Book 7, pg 93)
 See Dr. BK. 2A, pg 38 and Item Detail and Dr. Sh. #1 of 3



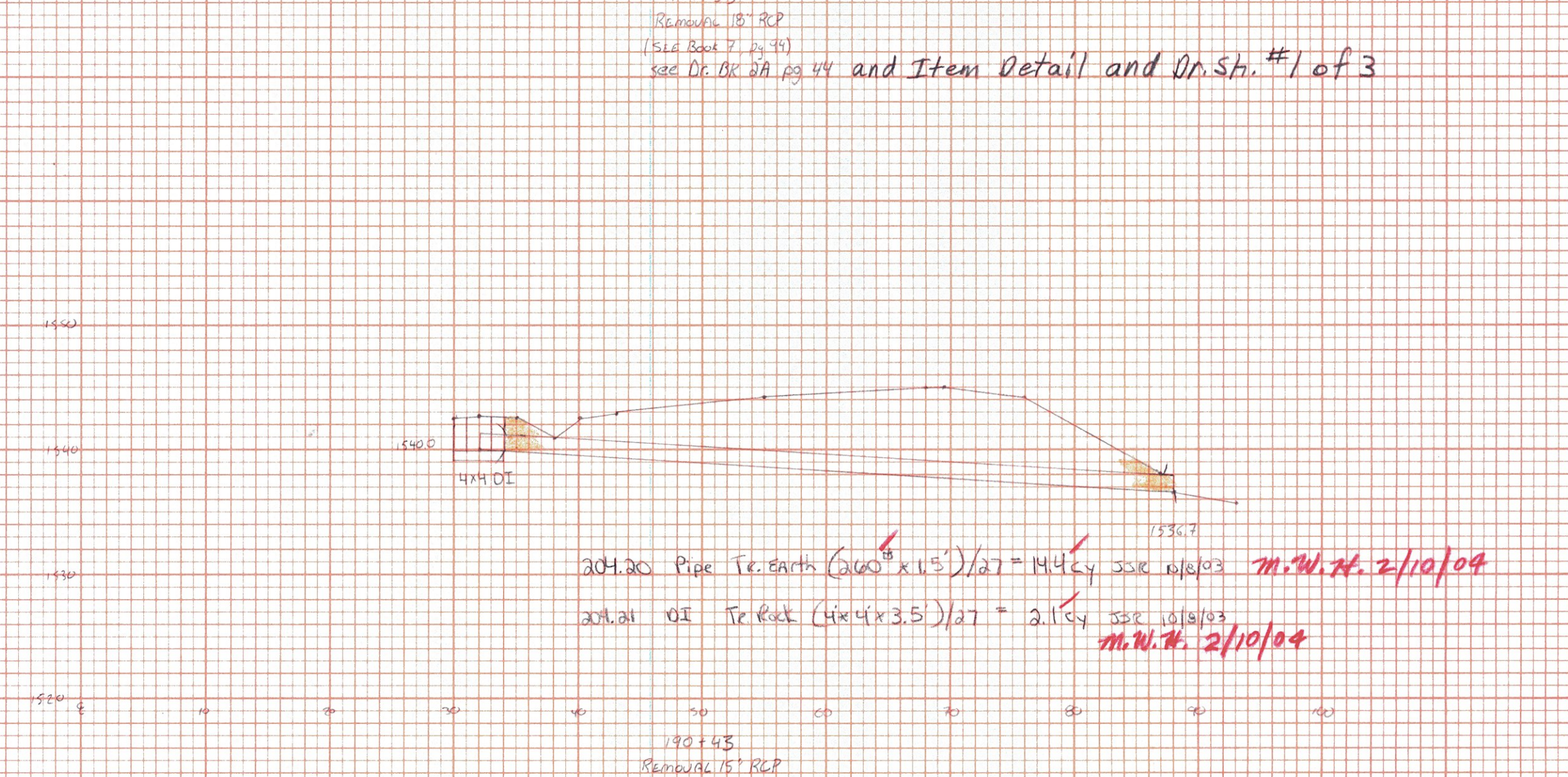
183+70
 Remove 18" RCP
 (See Book 7, pg 30)
 See Dr. BK. 2A, pg 32 and Item Detail and Dr. Sh. #1 of 3



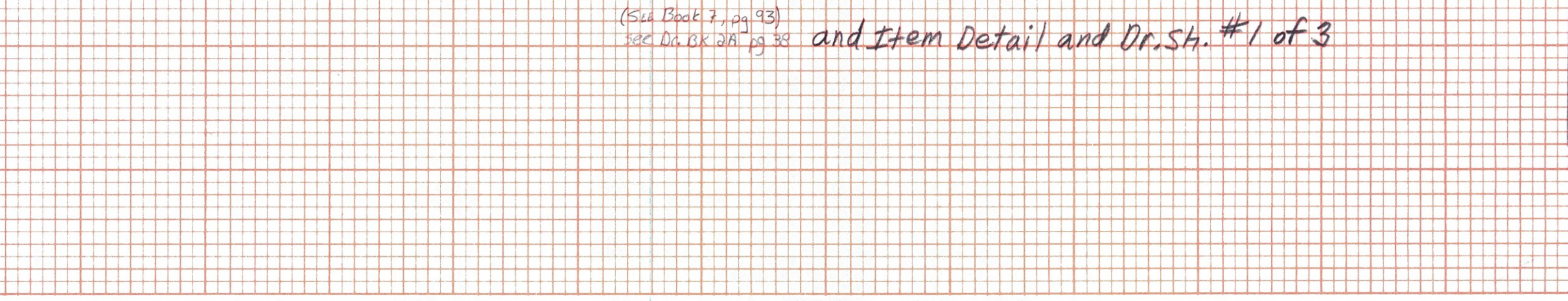
203+22
 Remove 15" RCP
 (See Book 7, pg 93)
 See Dr. BK. 2A, pg 34 and Item Detail and Dr. Sh. #1 of 3



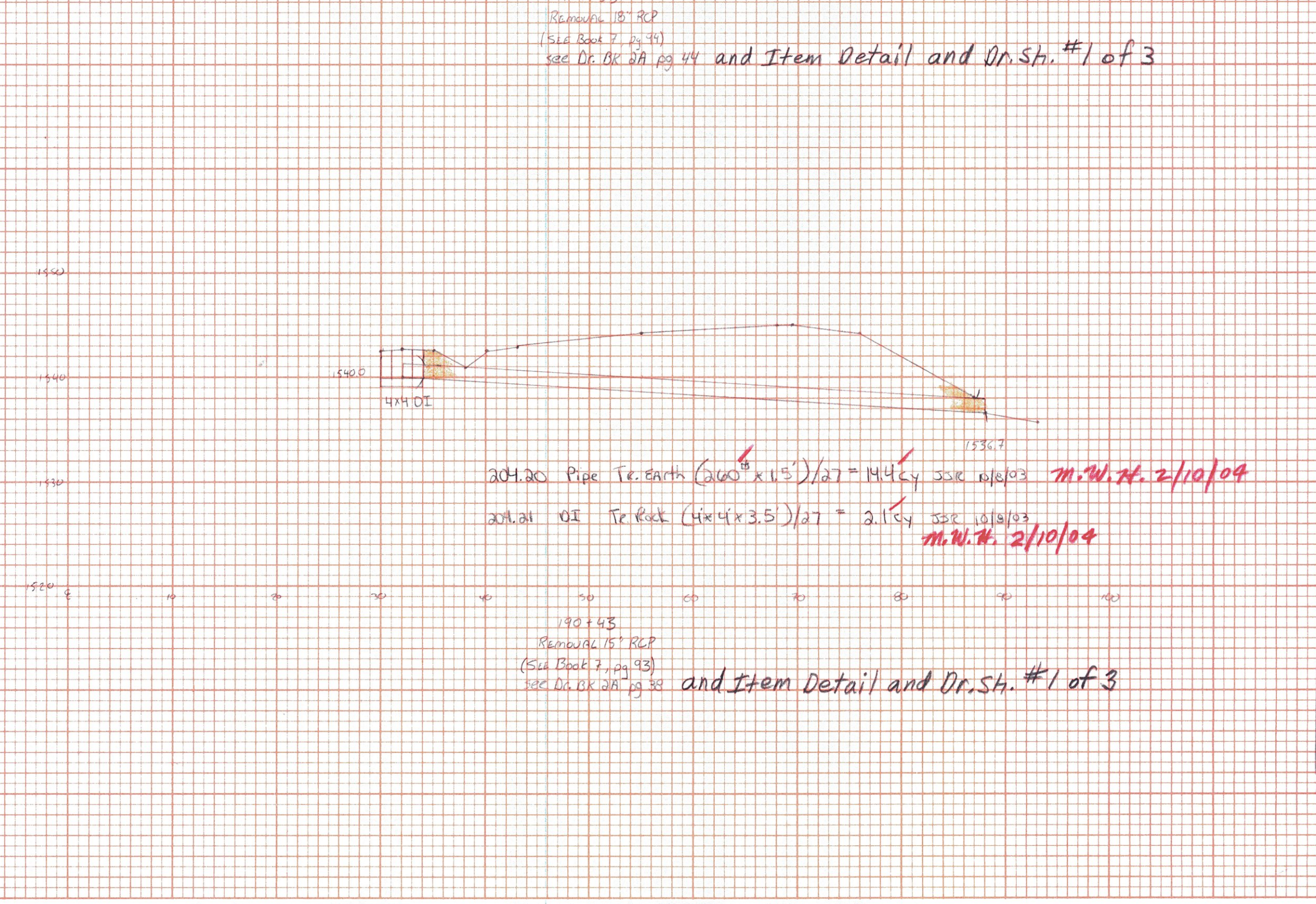
174+35
 Remove 18" RCP
 (See Book 7, pg 34)
 See Dr. BK. 2A, pg 44 and Item Detail and Dr. Sh. #1 of 3



190+43
 Remove 15" RCP
 (See Book 7, pg 93)
 See Dr. BK. 2A, pg 38 and Item Detail and Dr. Sh. #1 of 3



183+70
 Remove 18" RCP
 (See Book 7, pg 30)
 See Dr. BK. 2A, pg 32 and Item Detail and Dr. Sh. #1 of 3



SEARSBURG / WILMINGTON

171+20	Remove 24" RCP
183+70	Remove 18" RCP
186+70	Remove 15" RCP
190+43	Remove 15" RCP
174+35	Remove 18" RCP
203+22	Remove 15" RCP
172+02	OT

Drainage Sheet 9 of 27

SEARSBURG - WILMINGTON
 NH-F010-1(13)