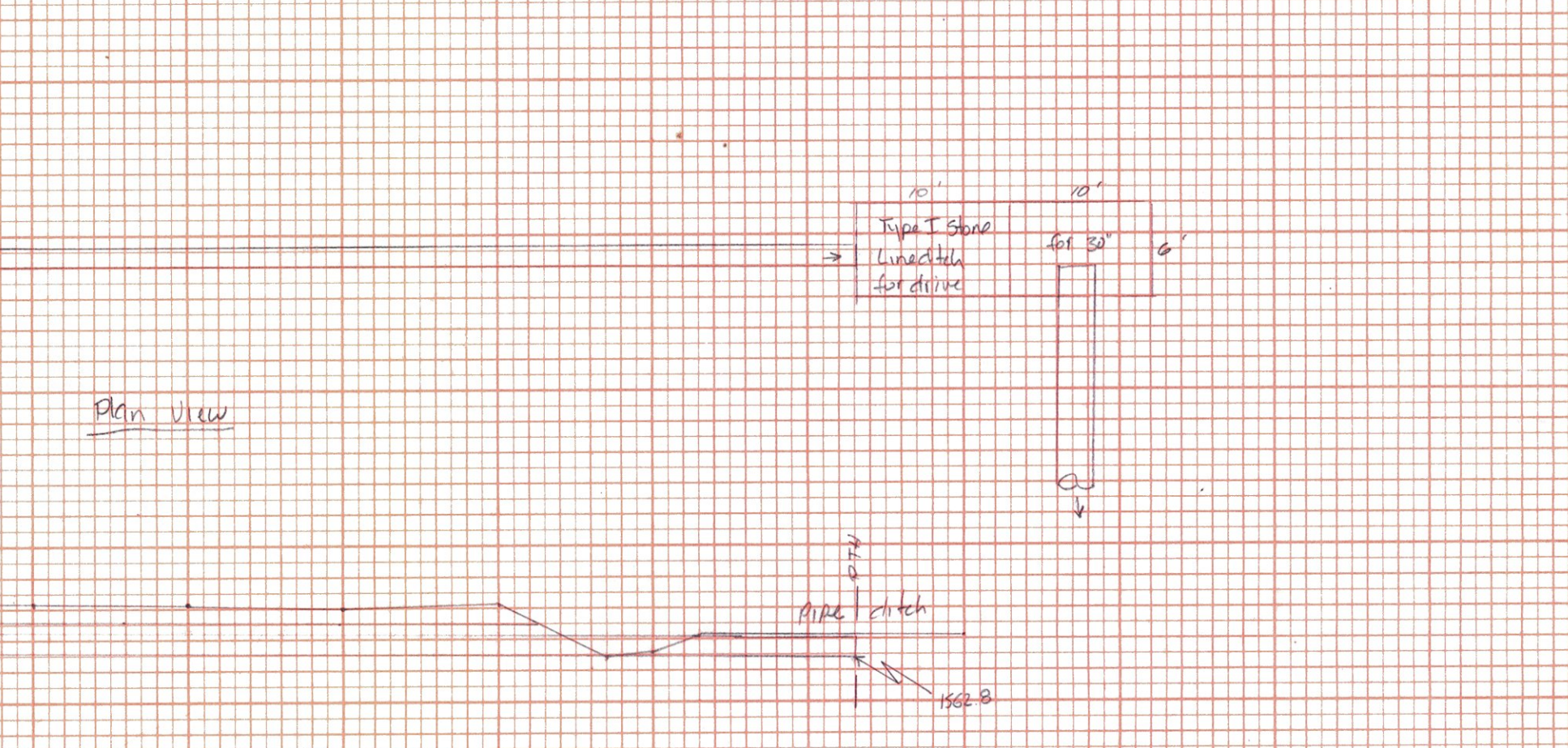
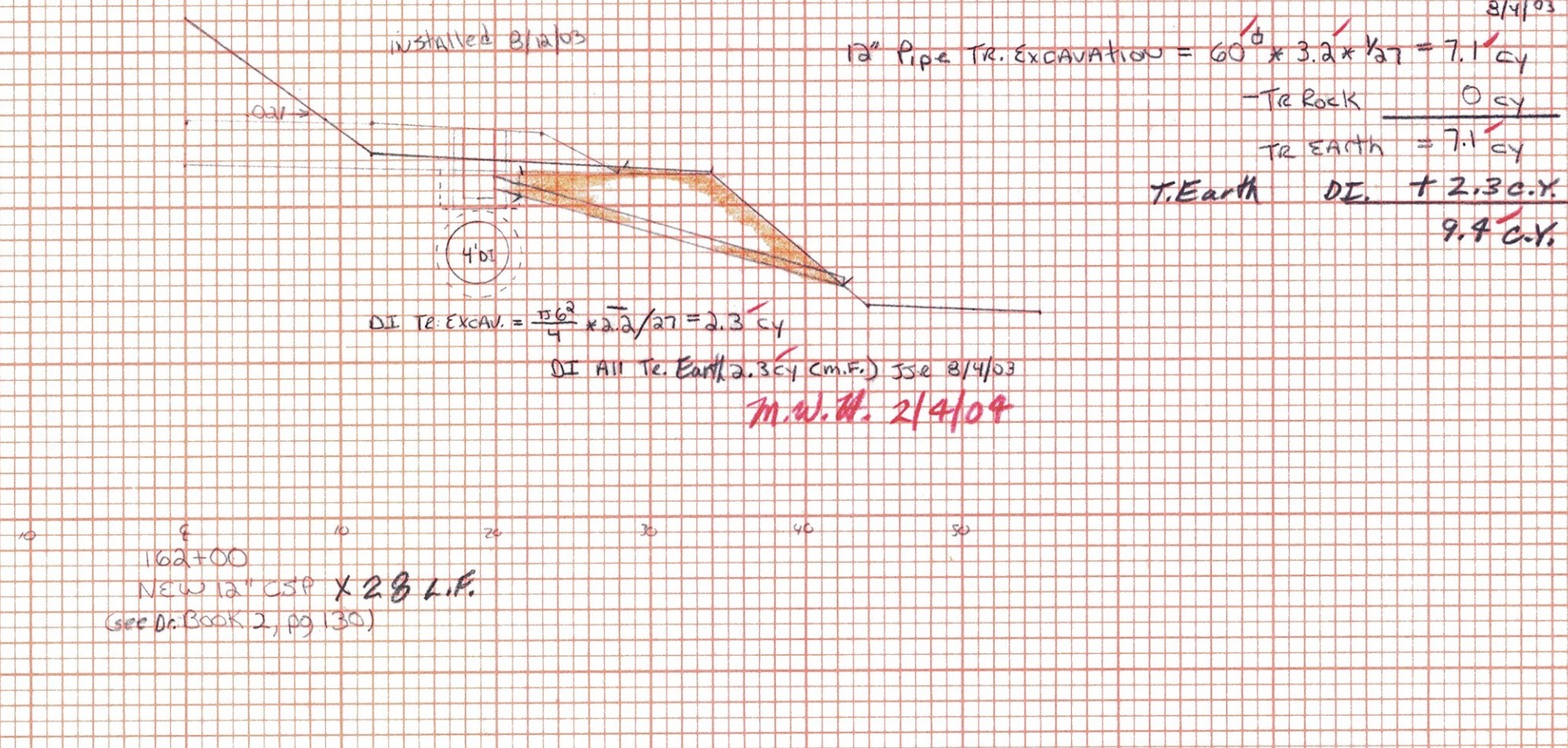
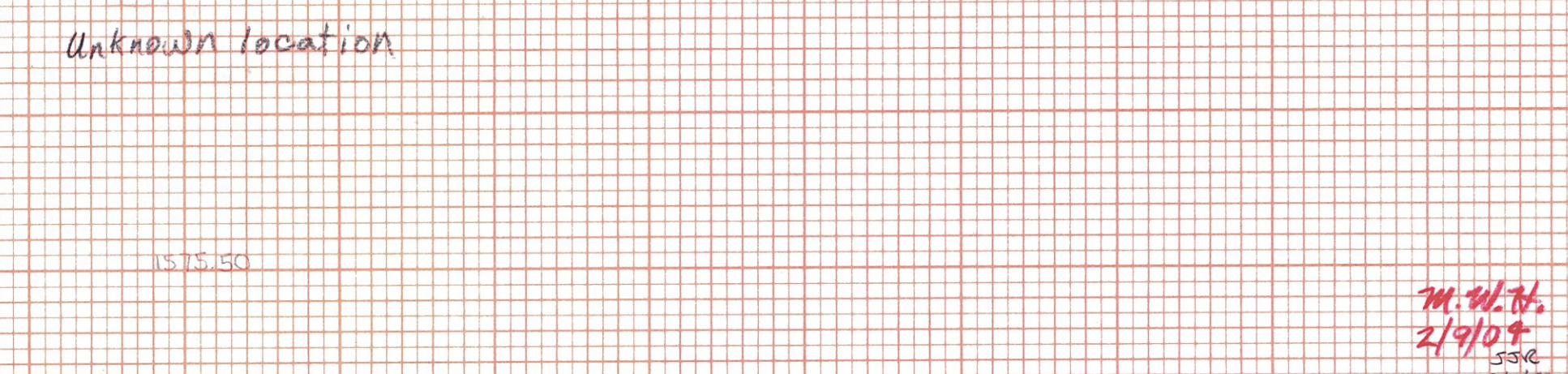
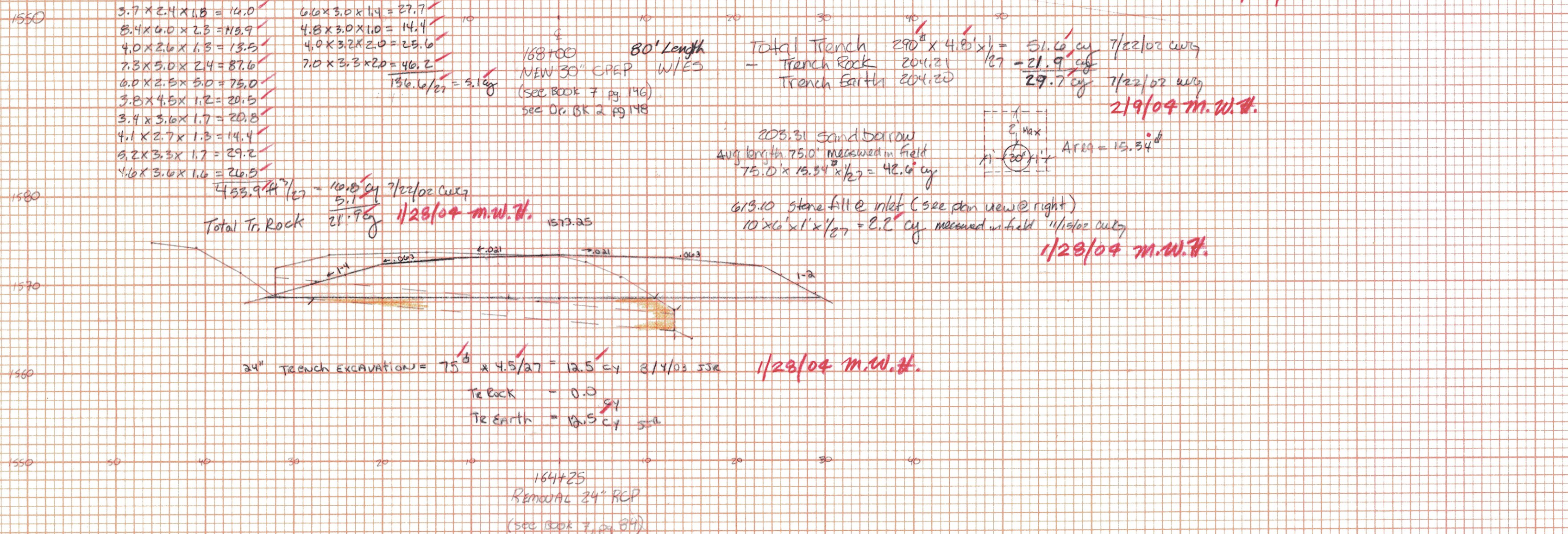
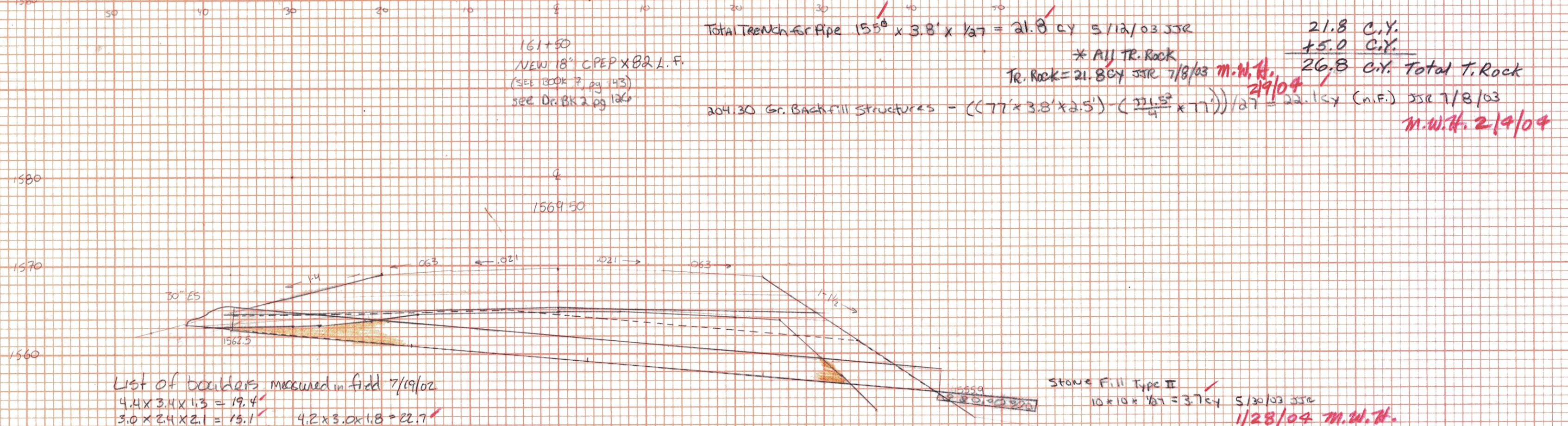
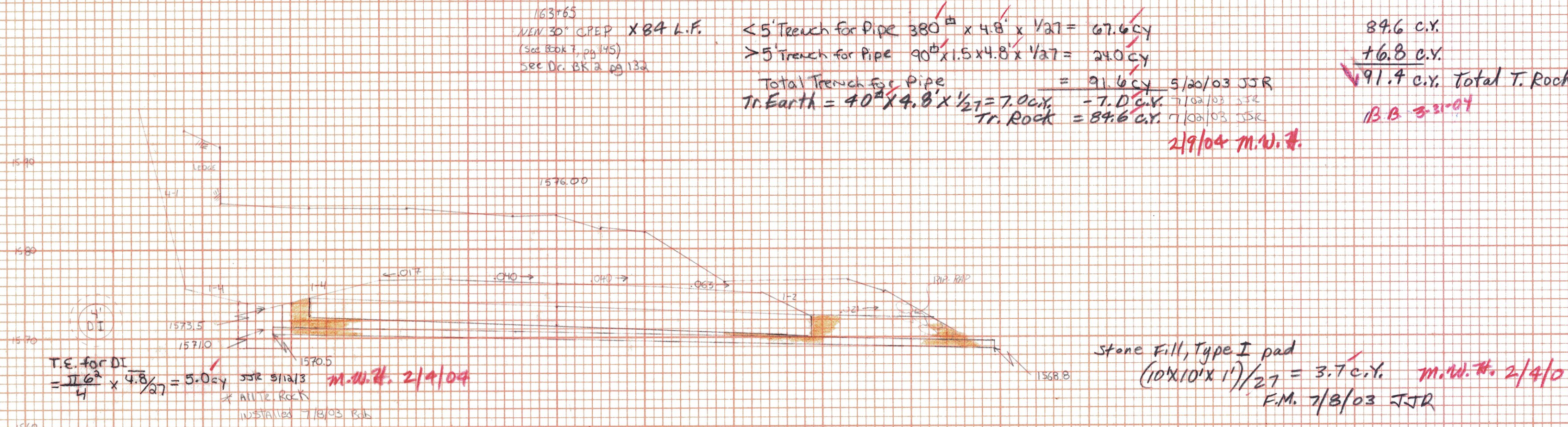
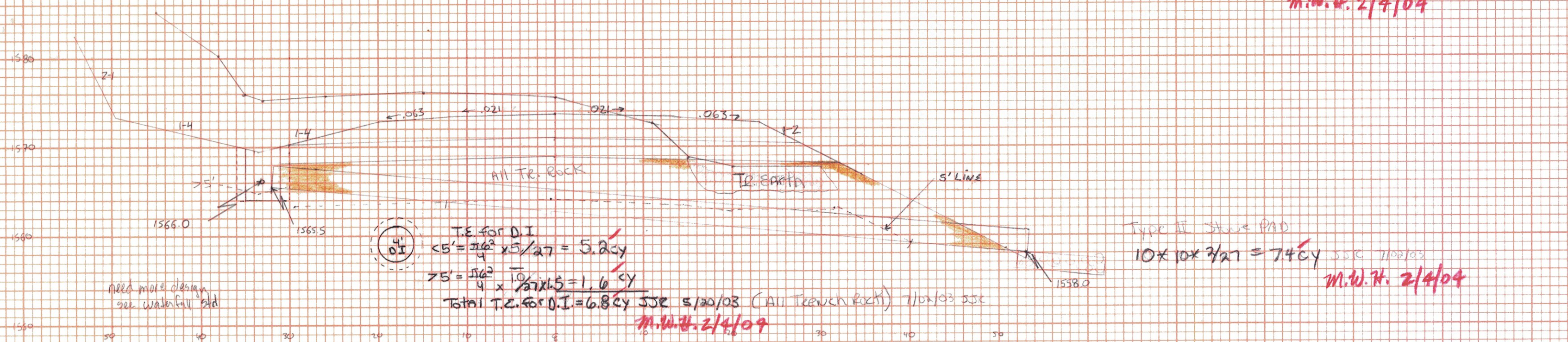


FINAL SURVEY SURVEYED, PLATTED, NOTE BOOK, TEMPLATE, AREAS CHECKED, NO.

ORIGINAL SURVEY SURVEYED, PLATTED, NOTE BOOK, TEMPLATE, AREAS CHECKED, NO.

204.30 Gr. Backfill Structures
 Pipe - $((32 \times 4.8 \times 3.5) - (\frac{12.25}{4} \times 8)) / 27 = 36.15 \text{ cy}$
 D.I. - $((\frac{12.25}{4} \times 5.8) - (\frac{12.25}{4} \times 5.8)) / 27 = 3.45 \text{ cy}$
 Total = 39.6 cy (c.m.f.) JSR 7/2/03
 M.W.#. 2/4/04



All quantities placed on the Item Detail and Dr. Sh. #1 of 3

164+25 REMOVE 24" RCP
 168+00 NEW 30" CSP
 164+50 NEW 18" CSP
 167+65 NEW 30" CSP
 167+41 NEW 15" CSP
 162+00 New 12" CSP
 Sparsburg - Wilmington
 Drainage sheet # of

SEARSBURG - WILMINGTON
 N+10104(18)