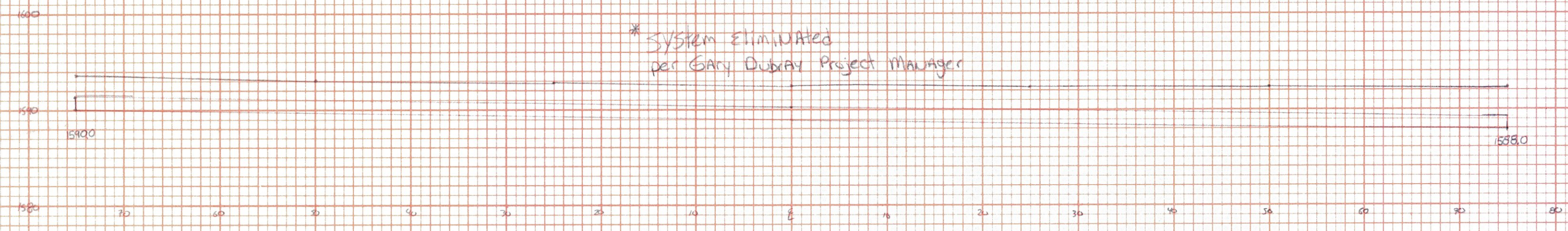


FINAL SURVEY DATE
BY
SURVEYED, PLOTTED, TEMPLATE, AREAS CHECKED
NOTE BOOK NO.

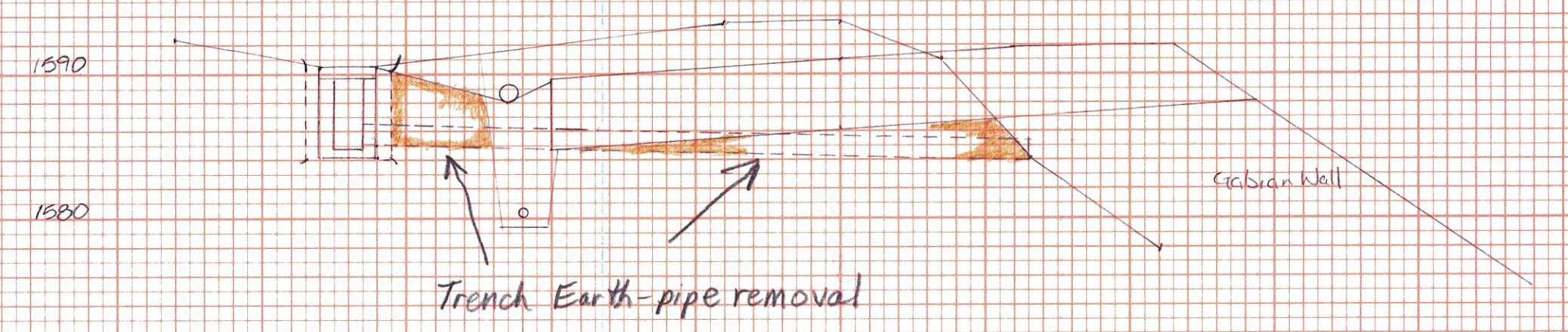
ORIGINAL SURVEY DATE
BY
SURVEYED, PLOTTED, TEMPLATE, AREAS CHECKED
NOTE BOOK NO.



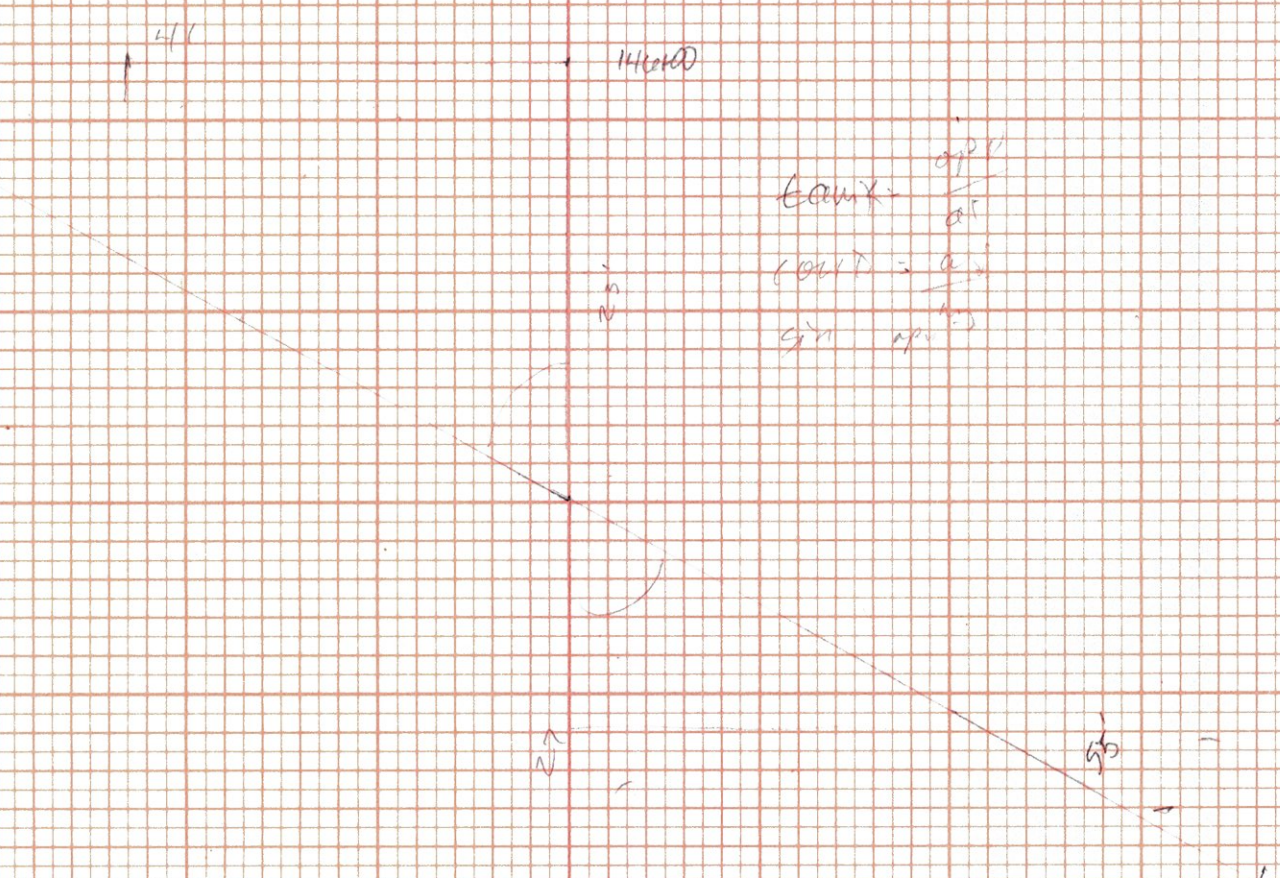
15900 - 15950
NEW 15" CPEP
(see Bk 10 pg 140)
(see Dr. Bk 2 pg 134)

204.20 Tr. Rock DI Removal
 $\frac{1}{4} \times 67' \times 1/2' = 4.95$ see 11/17/04
m.w.#. 1/28/04

204.20 Tr. Earth Pipe Removal
 $300' \times 2.0' \times 1/2' = 22.5$ see 11/17/04
76 5.6 m.w.#. 1/28/04 ✓
R.B. 3-31-04



191+43
REMOVE 18" RCP c. DI
see Bk 7 pg 141
see Dr. Bk 2 pg 108

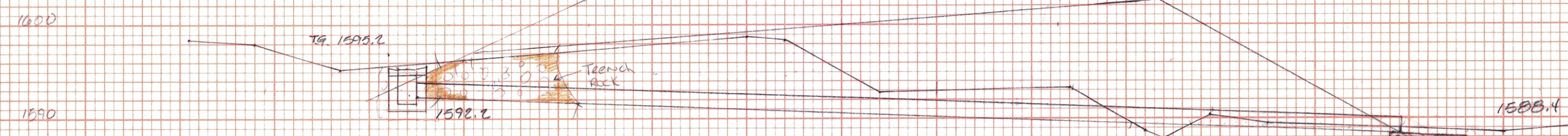


145+00
145+50
1580
1590
1600

204.30
DI Gear Box Backfill Structures
 $(\frac{1}{4} \times 145' \times 1/2') \div 17' = 2.6$ see 11/17/04
m.w.#. 1/28/04

204.30
Pipe Gr. B.F. Structures
 $(\frac{1}{4} \times 30' \times 1/2') \div 17' = 2.7$ see 11/17/04
m.w.#. 1/28/04

DI = 2.6 c.y.
Total Gr.Bk. 30.1 c.y. m.w.#. 1/28/04
R.B. 7-13-04



145+77 on skew
NEW 18" x 108" CPEP (SL)

DI Trencher Rock
 $\frac{1}{4} \times 4.5' \times 1/2' = 4.74$ see 11/17/04
m.w.#. 1/28/04

Total Tr. Rock
DI = 4.7 + 9.1 = 13.8 c.y. R.B. 3-31-04
m.w.#. 1/28/04

291
41.0 ← Use
49.7 ← This figure
91.1 ← as the pipe Tr. Earth

40.6 m.w.#. 1/28/04 - add to Stone Fill, T. Earth
41.0 R.B. PLAT 2 SEE CROSS SECTION-FULL LINE
m.w.#. 4/13/04

Type I Stone Fill
 $(8' \times 7' \times 1.5') \div 17' = 2.1$ see 11/17/04
m.w.#. 1/28/04

T. Earth for Stone Fill
 $(8' \times 7' \times 1.5') \div 17' = 3.1$ c.y.
from pipe exc. = 40.6 c.y. 41.0
T. Earth Total 44.1 m.w.#. 1/28/04
R.B. 3-31-04
m.w.#. 4/13/04

All quantities placed on item detail and Dr. Sh. #1 of 3

SEAFSBURG-WILMINGTON
Drainage sheet 5 of

New 18" 145+77 skewed
New 15" CPEP 150+00 - 151+50
Remove 18" RCP 151+45