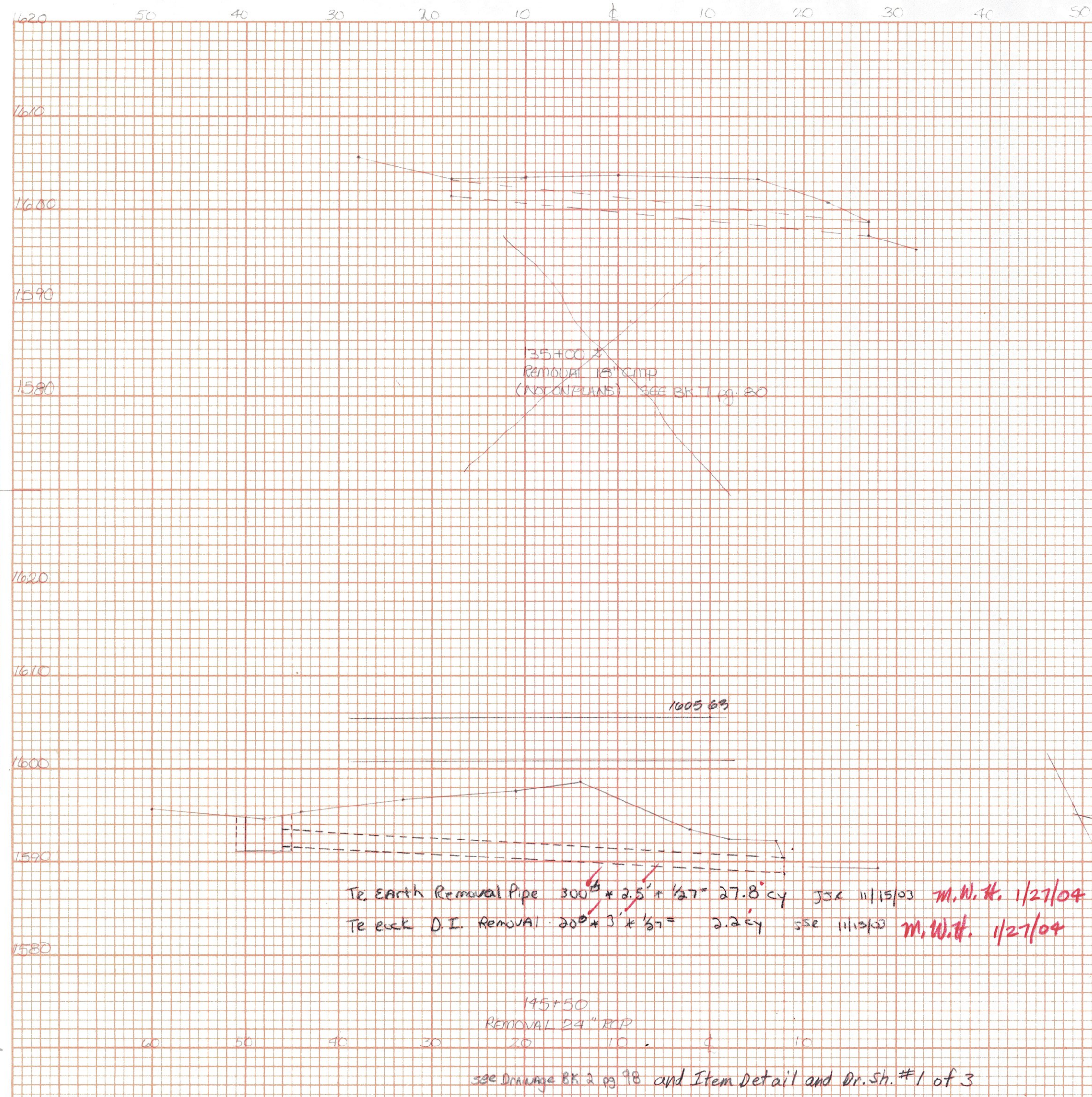


FINAL SURVEY
 SURVEYED
 PLOTTED
 NOTE BOOK
 AREA CHECKED

ORIGINAL SURVEY
 SURVEYED
 PLOTTED
 NOTE BOOK
 AREA CHECKED



T.E. Earth Removal Pipe $300'' \times 2.5' \times 1/27 = 27.8 \text{ c.y.}$ JJK 11/15/03 **M.W.H. 1/27/04**
 T.E. Rock D.I. Removal $200'' \times 3' \times 1/27 = 2.2 \text{ c.y.}$ JJK 11/15/03 **M.W.H. 1/27/04**

195+50
 REMOVAL 24" RCP
 SEE DRAINAGE RR 2 pg 78 and Item Detail and Dr. Sh. #1 of 3

T.E. EXCAV. FOR D.I.
 $\frac{116'' \times 7.8}{27} = 5.0 \text{ c.y.}$
 T.Rock = 5.0 c.y. JJK 7/20/03
 T.EARTH = 0.0 c.y. **M.W.H. 1/23/04**

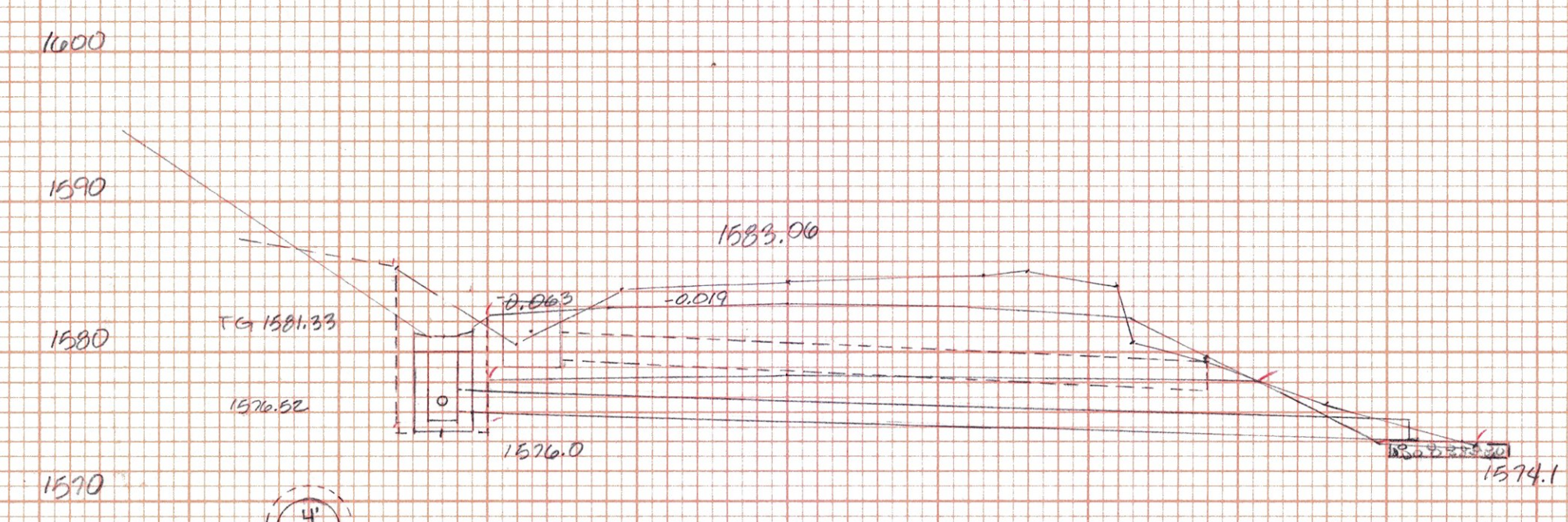
T.Rock DI = 5.0 c.y.
 T.Rock Pipe = 10.5 c.y.
 15.5 c.y. **M.W.H. 1/28/04**
 B.B. 3-31-04

158+70 6'
 Replace 24" x 60" CPEP Removal Out in Common Excavation
 See bk #7 pg 82
 See Dr. Bk 2 pg 118 and Item Detail and Dr. #1 of 3
 T.E. EXCAVATION FOR 24" PIPE
 $\frac{113'' \times 7.8}{27} = 18.0 \text{ c.y.}$
 T.E. Earth = $\frac{113'' \times 4.3 \times 1/27} = 2.7 \text{ c.y.}$
 T.Rock = $\frac{66'' \times 4.3 \times 1/27} = 10.5 \text{ c.y.}$
 Combine w/ DI T.Rock

SEE 7/27/03
M.W.H. 1/20/04
 B.B. 3-31-04

304.30 Gr. Backfill Structures
 Pipe - $\frac{((66'' \times 4.3' \times 2.0') - (\frac{113''}{27} \times 60))}{27} = 21.7 \text{ c.y.}$
 D.I. - $\frac{((\frac{113''}{27} \times 5') - (\frac{113''}{27} \times 5'))}{27} = 2.9 \text{ c.y.}$
 TOTAL = 24.6 c.y. (m.F.) JJK 7/20/03
M.W.H. 1/28/04

Reduce
 See Western Connector
 23+00
 Replace with new 18" x 52" CPEP (SA)
 See BK. 2B, Page 120
 See book 7, page 79
 See also Item Detail and Dr. Sh. #3 of 3



T.E. FOR DI - See below - paid as T.Rock
 $\frac{116'' \times 6.3}{27} = 6.6 \text{ c.y.}$
 $\frac{511 \times 103}{27} = 5.8$
 12.3 c.y. **M.W.H. 1/28/04**
 T.E. EXCAV. FOR D.I. ALL T.Rock
 6.6 c.y. JJK 7/21/03
M.W.H. 1/28/04

154+65 70'
 Replace 18" x 60" CPEP
 See bk #7, pg 81
 See Dr. Bk 2 pg 112 and Item Detail and Dr. Sh. #1 of 3

Total Trench for pipe $170'' \times 3.8' \times 1/27 = 23.9 \text{ c.y.}$ 5/12/03 JJK **M.W.H. 1/28/04**

613.10 Stone Fill @ outlet (See plan view @ RT)
 $8 \times 7 \times 1/27 = 2.1 \text{ c.y.}$ JJK 7/21/03 **M.W.H. 1/28/04**

304.30 Gr. Backfill Structures
 Pipe - $\frac{((66'' \times 2.5' \times 3.8') - (\frac{113'' \times 60'')}{27})}{27} = 19.9 \text{ c.y.}$
 D.I. - $\frac{((\frac{113''}{27} \times 5') - (\frac{113''}{27} \times 5'))}{27} = 2.9 \text{ c.y.}$
 TOTAL = 22.8 c.y. JJK 7/21/03
M.W.H. 1/28/04

Seaburg - Wilmington
 Drainage Sheet 4. of
 Removal 18" 135+00 - No quantities
 Removal 24" 145+50
 Replace 18" West Connector 25+00
 Replace 18" 154+65
 Replace 24" 158+70
 Remove 18" 160+25 - No quantities