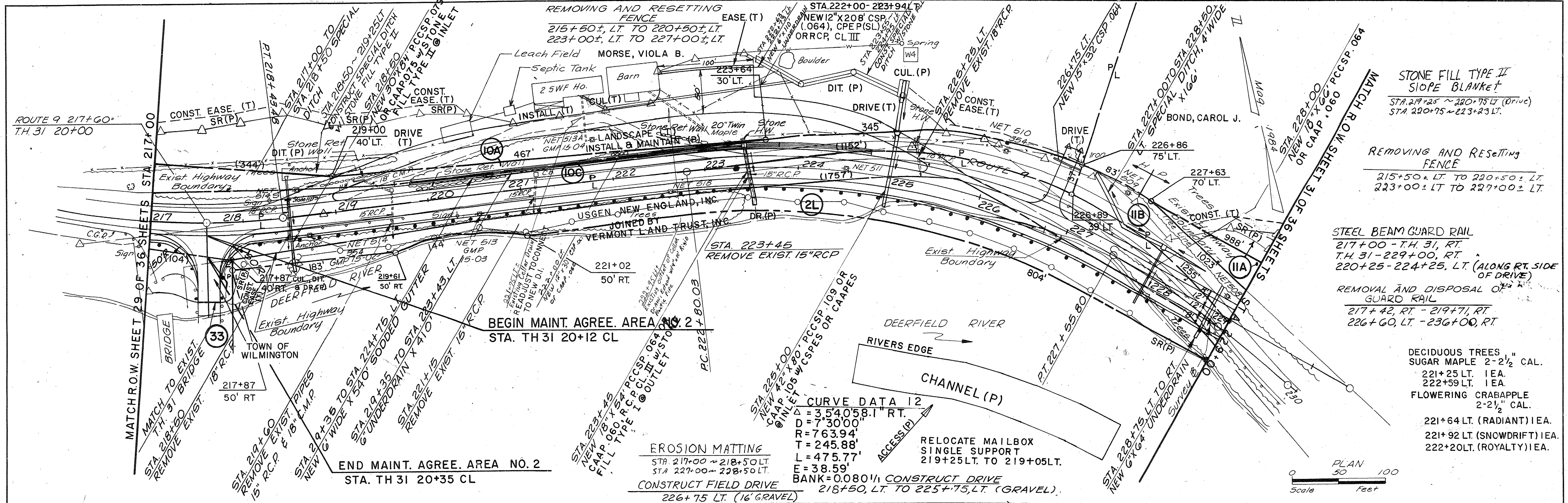


DATE	
BY	
REVISIONS	
NO.	
DATE	
BY	
REVISIONS	
NO.	
DATE	
BY	
REVISIONS	
NO.	

DATE	
BY	
REVISIONS	
NO.	
DATE	
BY	
REVISIONS	
NO.	
DATE	
BY	
REVISIONS	
NO.	



STONE FILL TYPE II
SLOPE BLANKET
STA 219+25 ~ 220+75 LT (DRIVE)
STA 220+75 ~ 223+23 LT.

REMOVING AND RESETTING
FENCE
215+50 ± LT TO 220+50 ± LT
223+00 ± LT TO 227+00 ± LT

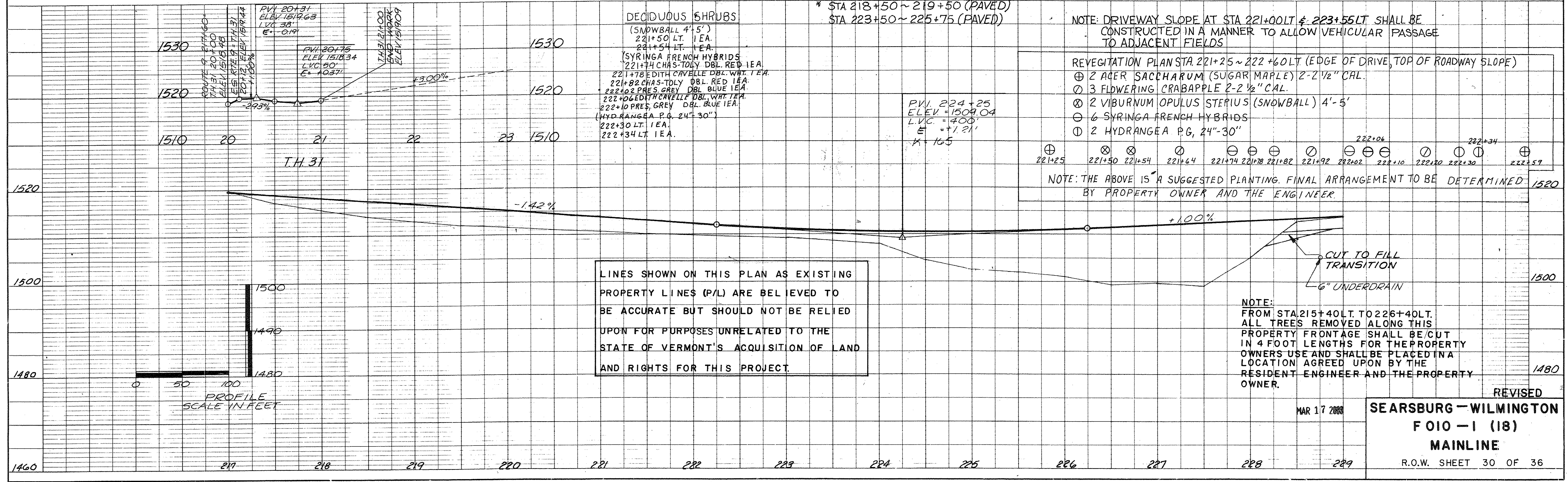
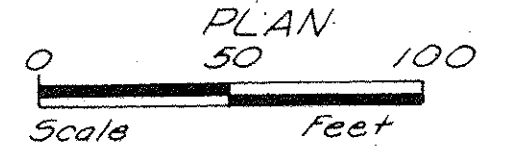
STEEL BEAM GUARD RAIL
217+00 - T.H. 31, RT.
T.H. 31 - 229+00, RT.
220+25 - 224+25, LT. (ALONG RT. SIDE
OF DRIVE)

REMOVAL AND DISPOSAL OF
GUARD RAIL
217+42, RT. - 219+71, RT.
226+60, LT. - 236+00, RT.

DECIDUOUS TREES
SUGAR MAPLE 2-2 1/2" CAL.
221+25 LT. IEA
222+59 LT. IEA
FLOWERING CRABAPPLE
2-2 1/2" CAL.
221+64 LT. (RADIANT) IEA
221+92 LT. (SNOWDRIFT) IEA
222+20 LT. (ROYALTY) IEA

CURVE DATA 12
Δ = 354058.1" RT.
D = 73000'
R = 76394'
T = 245.88'
L = 475.77'
E = 38.59'
BANK = 0.080 1/4 CONSTRUCT DRIVE
218+50, LT. TO 225+75, LT. (GRAVEL).

EROSION MATTING
STA 217+00 ~ 218+50 LT
STA 227+00 ~ 228+50 LT
CONSTRUCT FIELD DRIVE
226+75 LT. (16" GRAVEL)



LINES SHOWN ON THIS PLAN AS EXISTING
PROPERTY LINES (P/L) ARE BELIEVED TO
BE ACCURATE BUT SHOULD NOT BE RELIED
UPON FOR PURPOSES UNRELATED TO THE
STATE OF VERMONT'S ACQUISITION OF LAND
AND RIGHTS FOR THIS PROJECT.

NOTE: DRIVEWAY SLOPE AT STA 221+00 LT & 223+55 LT SHALL BE
CONSTRUCTED IN A MANNER TO ALLOW VEHICULAR PASSAGE
TO ADJACENT FIELDS

REVEGETATION PLAN STA 221+25 ~ 222+60 LT (EDGE OF DRIVE, TOP OF ROADWAY SLOPE)

- ⊕ 2 ACER SACCHARUM (SUGAR MAPLE) 2-2 1/2" CAL.
- ⊗ 3 FLOWERING CRABAPPLE 2-2 1/2" CAL.
- ⊙ 2 VIBURNUM OPULUS STERILIS (SNOWBALL) 4'-5'
- ⊖ 6 SYRINGA FRENCH HYBRIDS
- ⊕ 2 HYDRANGEA P.G. 24"-30"

NOTE: THE ABOVE IS A SUGGESTED PLANTING. FINAL ARRANGEMENT TO BE DETERMINED
BY PROPERTY OWNER AND THE ENGINEER.

NOTE:
FROM STA 215+40 LT. TO 226+40 LT.
ALL TREES REMOVED ALONG THIS
PROPERTY FRONTAGE SHALL BE CUT
IN 4 FOOT LENGTHS FOR THE PROPERTY
OWNERS USE AND SHALL BE PLACED IN A
LOCATION AGREED UPON BY THE
RESIDENT ENGINEER AND THE PROPERTY
OWNER.

MAR 17 2008

REVISED
SEARSBURG - WILMINGTON
FOIO - 1 (18)
MAINLINE
R.O.W. SHEET 30 OF 36