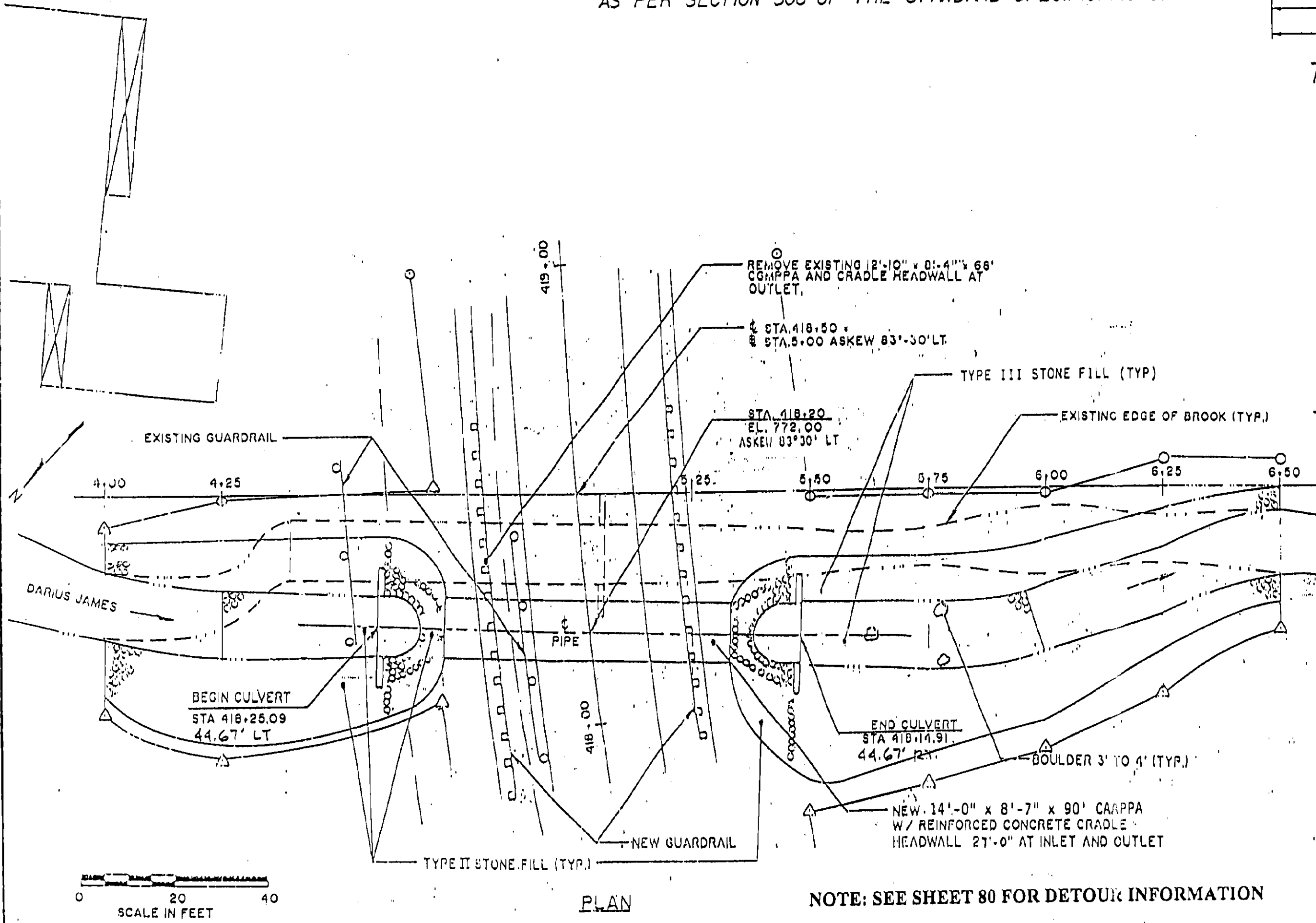
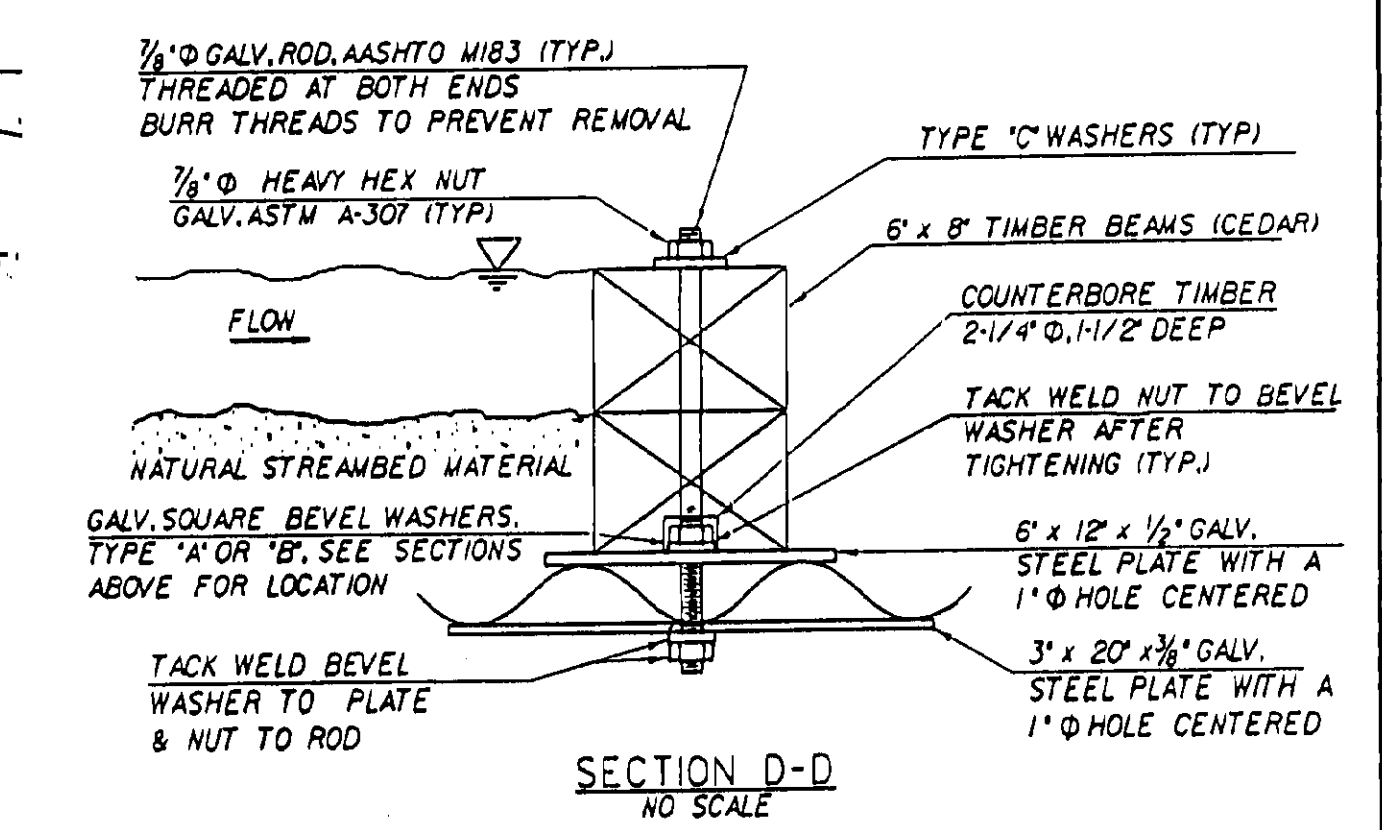
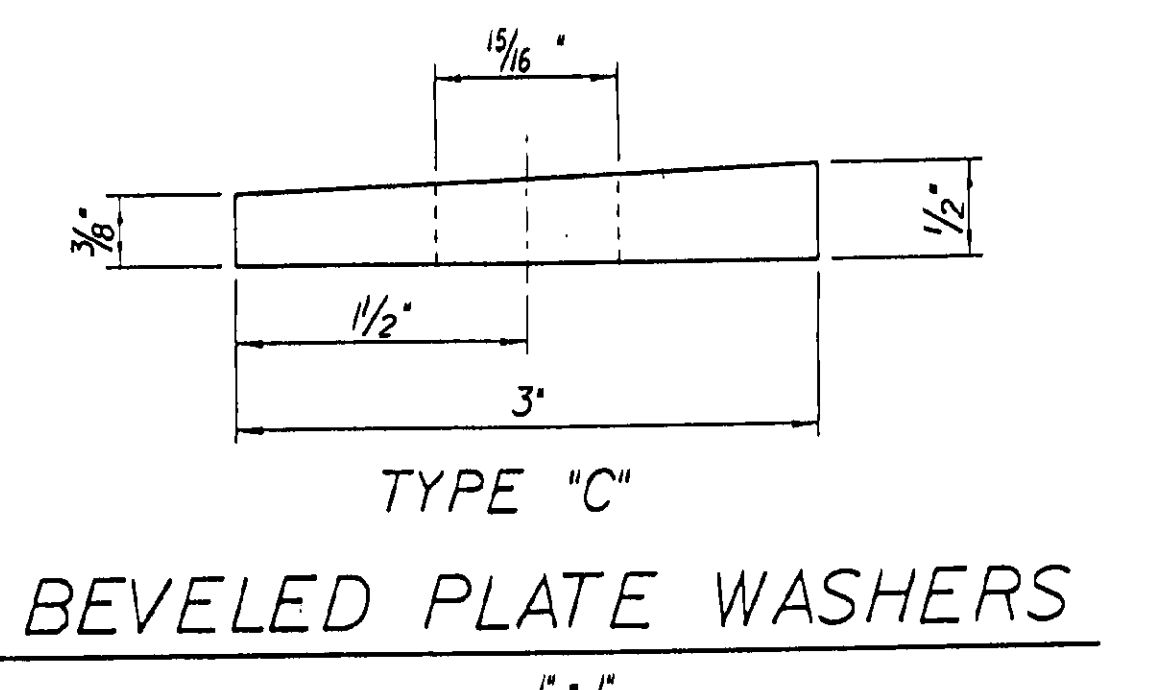


NOTE: ALL ATTACHMENT HARDWARE SHALL BE GALVANIZED AS PER SECTION 506 OF THE STANDARD SPECIFICATIONS.



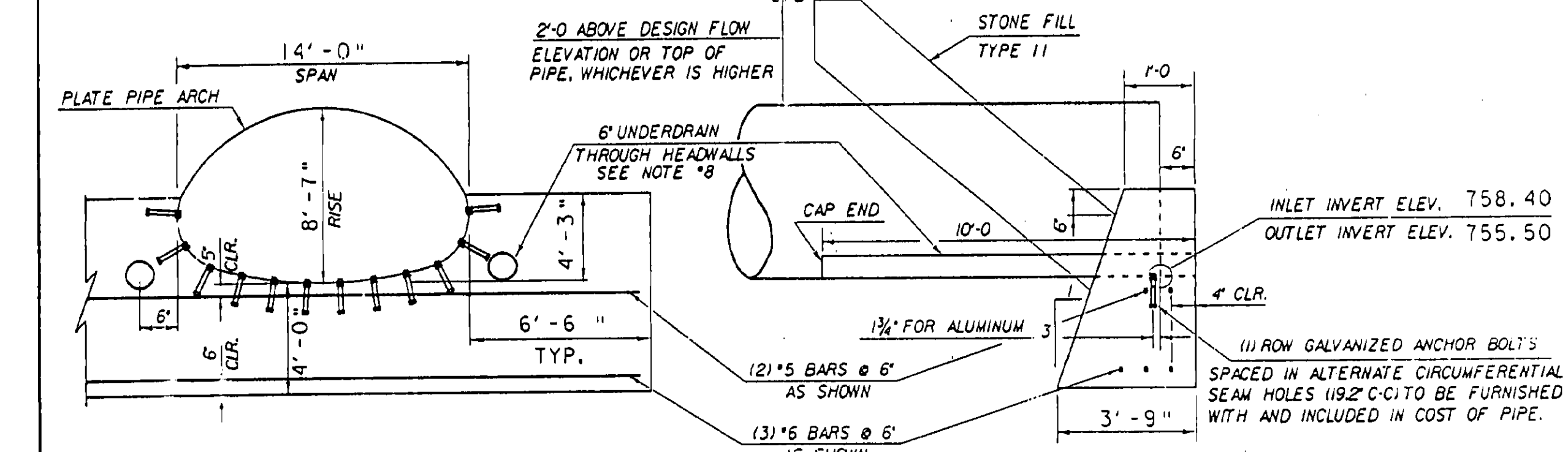
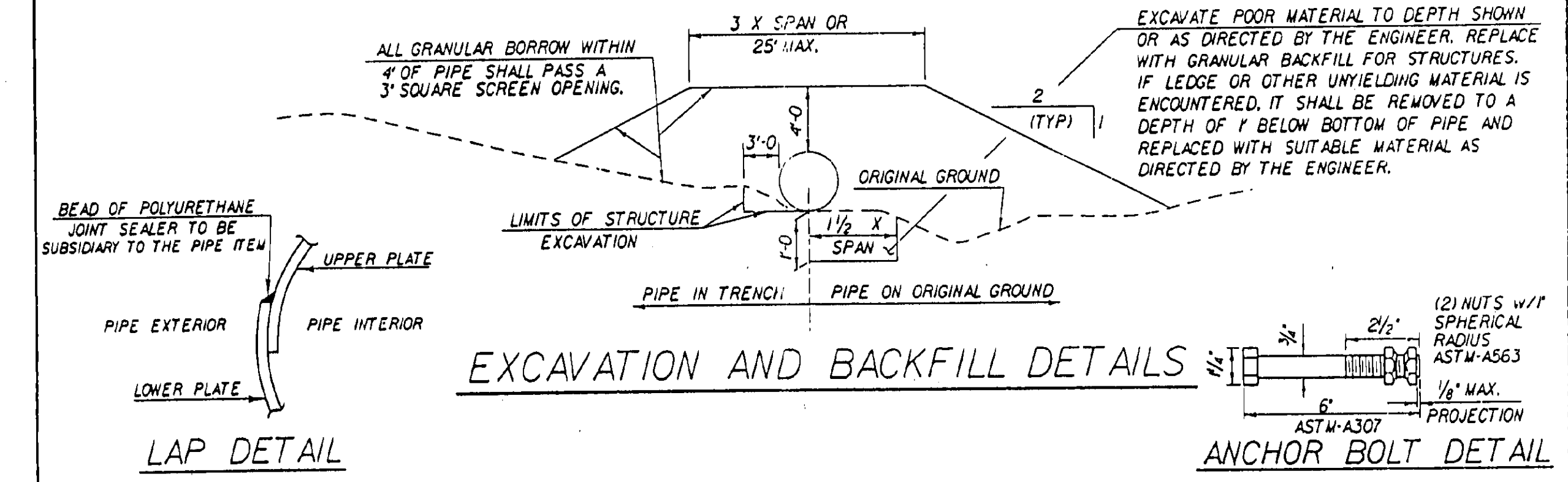
NOTE: SEE SHEET 80 FOR DETOUR INFORMATION



NOTE: ROD LENGTH AND TIMBER CROSS SECTIONS VARY W/ LOCATION OF CROSS SECTION.

NOTES

- ALL MATERIALS AND CONSTRUCTION SHALL CONFORM TO AGENCY OF TRANSPORTATION STANDARD SPECIFICATIONS FOR CONSTRUCTION DATED 1990, AND THE LATEST A.A.S.H.T.O. STANDARD SPECIFICATIONS FOR HIGHWAY BRIDGES. DESIGN IS FOR HS-25 LIVE LOAD.
- UNLESS OTHERWISE INDICATED, 5 1/3 BOLTS PER LINEAR FOOT FOR ALUMINUM PLATES ARE REQUIRED ALONG THE LONGITUDINAL SEAMS. ALL CONNECTIONS FOR STRUCTURAL PLATE SECTIONS SHALL BE MADE WITH BOLTS MEETING ASTM A-307 (GALVANIZED AFTER FABRICATION).
- IN LONGITUDINAL JOINTS LOCATED AT THE SPRING LINE OF PLATE PIPE ARCHES OR WITHIN 20" OF HORIZONTAL ON PIPES, THE BOLT NEAREST THE VISIBLE EDGE OF LAPPED JOINTS, AS VIEWED FROM INSIDE THE PIPE, SHALL BE PLACED IN THE VALLEY OF THE CORRUGATIONS.
- WHEN NORMAL CONSTRUCTION OR REGULAR TRAFFIC IS MAINTAINED OVER THE PIPE THE CONTRACTOR SHALL MAINTAIN A MINIMUM COVER OF THREE (3) FEET OF COMPACTED MATERIAL.
- ALUMINUM PIPE WHICH IS TO BE IN CONTACT WITH CONCRETE SHALL HAVE CONTACT SURFACES THOROUGHLY COATED WITH BITUMINOUS OR ASPHALTIC PAINT.
- PIPES SHALL BE FACTORY ELONGATED 5% (PIPE ARCHES SHALL NOT BE ELONGATED).
- THE ENDS OF THE PIPE SHALL BE CUT SQUARE.
- THE CONTRACTOR SHALL INCLUDE AT THE OUTLET END, A 10 FOOT PIECE OF 6" UNDERDRAIN EACH SIDE ON SAME GRADIENT AS CULVERT CONFORMING TO SUBSECTIONS 710.01. THE COST SHALL BE INCLUDED IN THE UNIT PRICE BID FOR THE CULVERT PIPE.

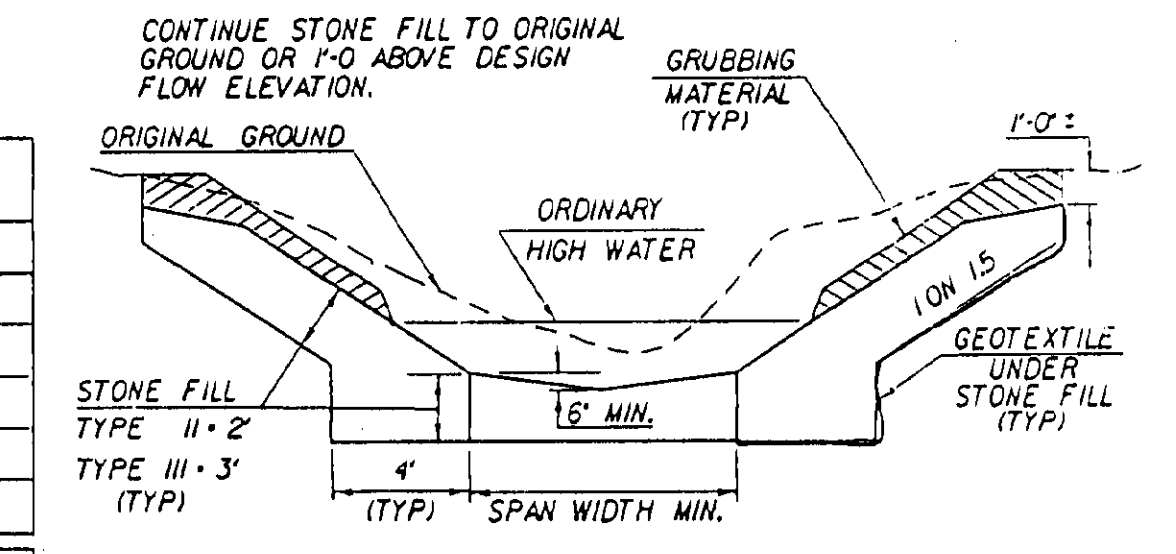


**REINFORCING STEEL SCHEDULE**

NO.	PCS.	SIZE	LENGTH	MARK	TYPE
SEE SHEET 1 OF 5					

**ESTIMATED QUANTITIES**

NO.	ITEM	UNIT	TOTAL	FINAL
SEE SHEET 1 OF 5				



**HYDRAULIC DATA**

DRAINAGE AREA	2.8 SQ. MI.	DESIGN FLOW	Q <sub>50</sub>	DESIGN OUTLET VELOCITY	13.9 FPS
DESIGN TAILWATER DEPTH	2.9 FT	ELEVATION	758.9		
ORDINARY HIGH WATER DEPTH	2.0 FT				
Q 10 FLOW	311 CFS	HEADWATER ELEVATION	764.0		
Q 25 FLOW	360 CFS	HEADWATER ELEVATION	764.5		
Q 50 FLOW	571 CFS	HEADWATER ELEVATION	766.3		
Q 100 FLOW	587 CFS	HEADWATER ELEVATION	766.5		

COMMENTS

**DETAILS OF STRUCTURAL PLATE PIPE CULVERTS**

	ALUMINUM
CORRUGATIONS	9" x 2 1/2"
SIZE OF PIPE OR PIPE ARCH	14'-0" x 8'-7"
WATERWAY AREA	94
PLATE THICKNESS (COATED)	0.125"
BOLT SIZE	3/4"
WEIGHT PER LINEAR FOOT	103.4
TOTAL WEIGHT	9306

**STATE OF VERMONT AGENCY OF TRANSPORTATION**

Town Of **RYEGATE** Bridge No. \_\_\_\_\_

Highway No. **US 302** Log Sta. \_\_\_\_\_

**US 302 OVER DARIUS JAMES BROOK** Surv. Sta. **418+20**

**DETAILS FOR 14'-0" X 8'-7" CAAPA**

Designed By **RSD & R WHITCOMB** Drawn By **RAW & R WHITCOMB**

Checked By **G ROY** Date \_\_\_\_\_ Bridge Design Supervisor **J H WEAVER** Date \_\_\_\_\_

PROJECT **GROTON- RYEGATE** PROJECT NO. **F026-11(30)**

I.G.C. Info. /str3/78d073/sd073dgn sd073dgn

Bridge Sheet No. **4 OF 5** Sheet **7B** of **152**