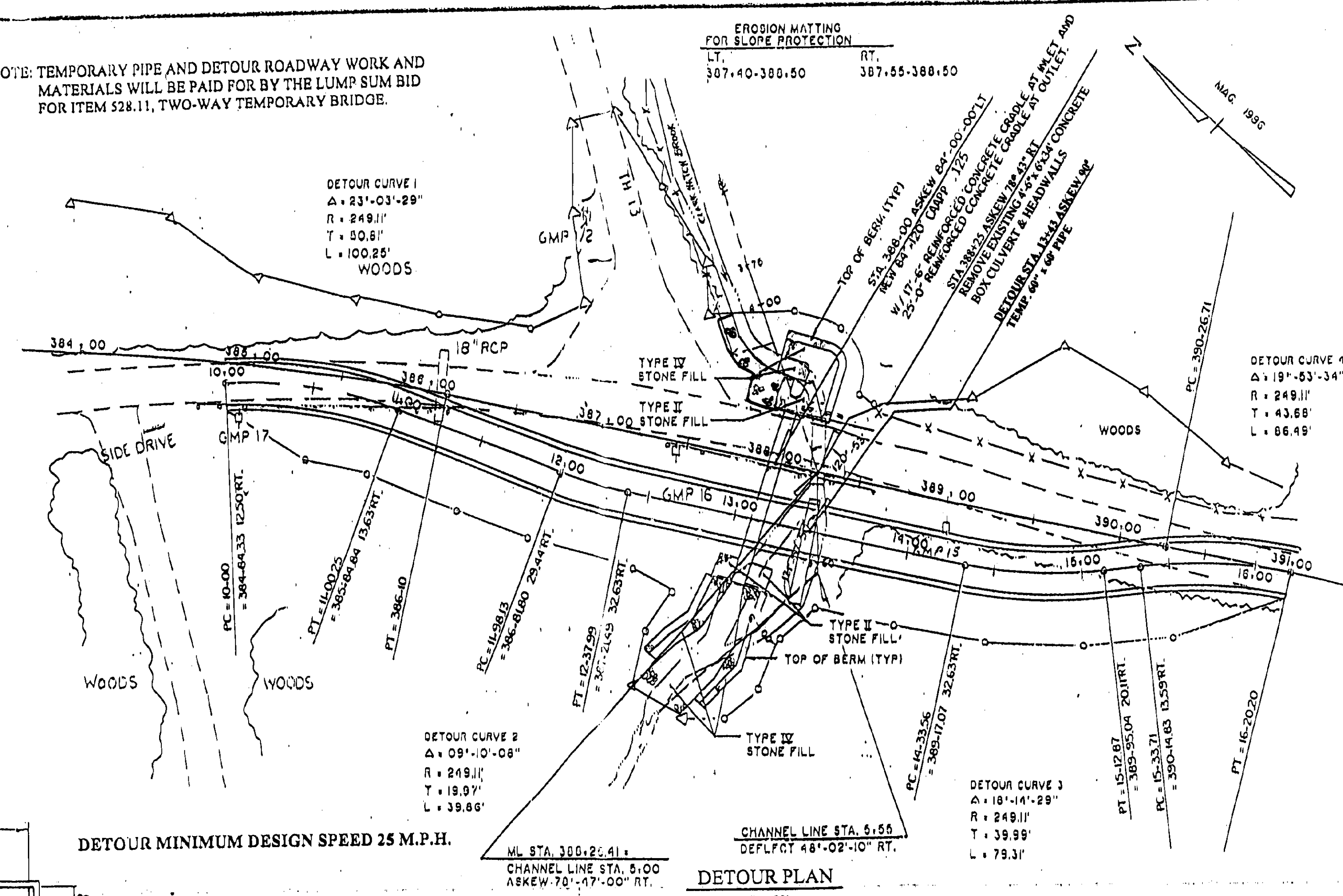
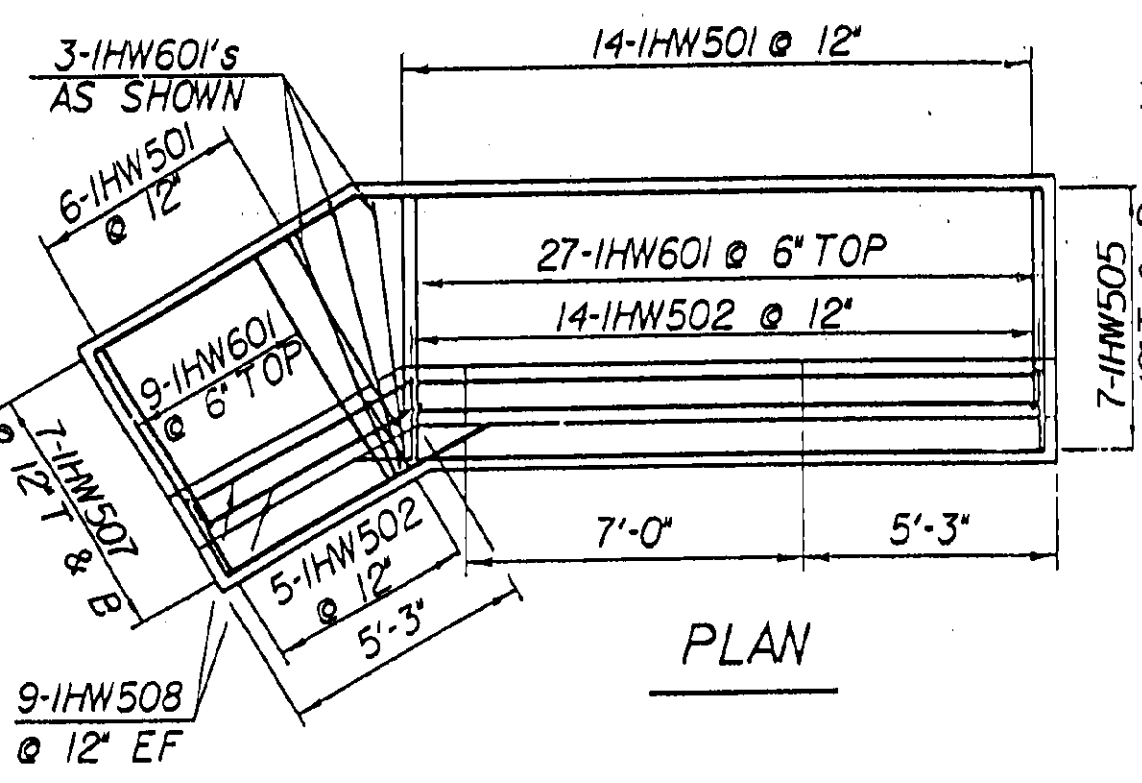


HEADWALL TYPICAL SECTION
1/2" = 1'-0"

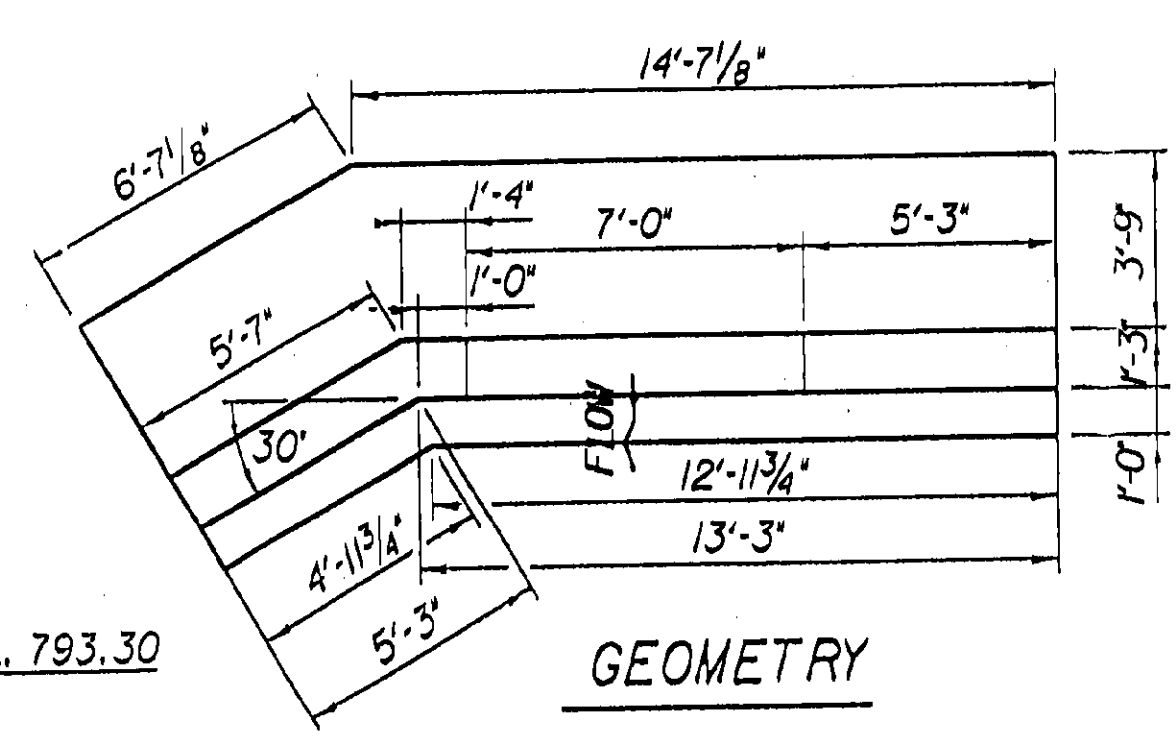
NOTE: TEMPORARY PIPE AND DETOUR ROADWAY WORK AND MATERIALS WILL BE PAID FOR BY THE LUMP SUM BID FOR ITEM 528.11, TWO-WAY TEMPORARY BRIDGE.



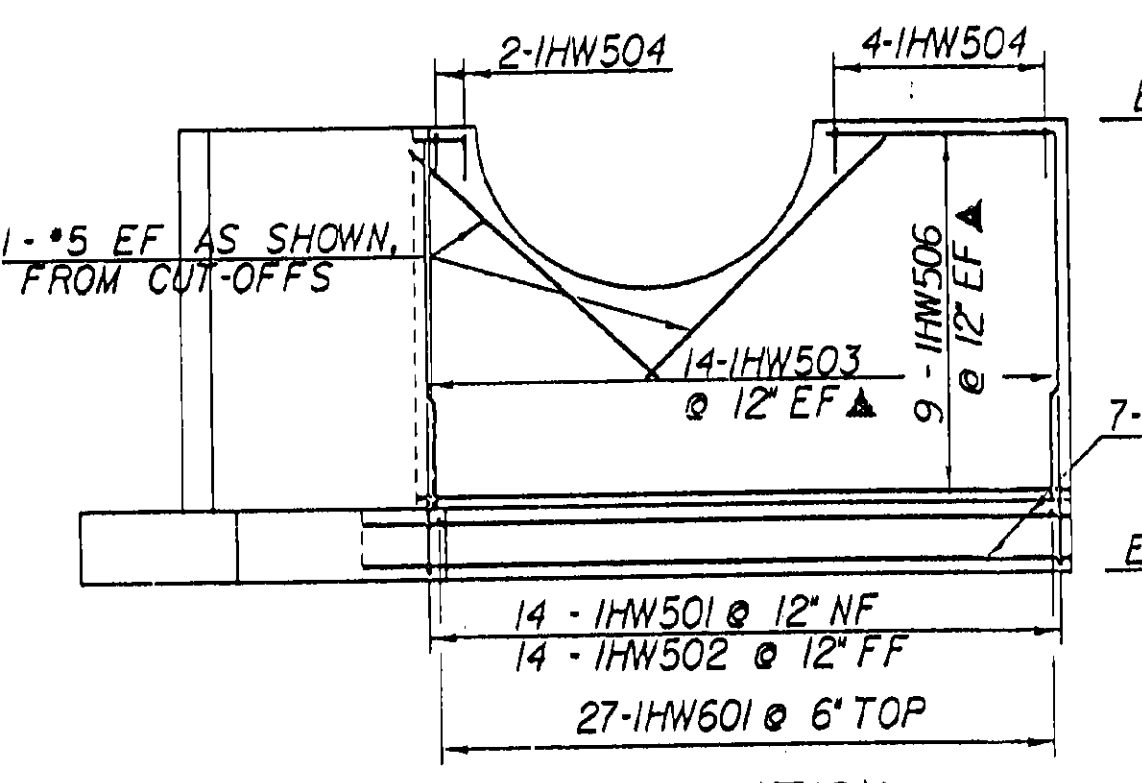
DETOUR PLAN
1" = 50'



PLAN



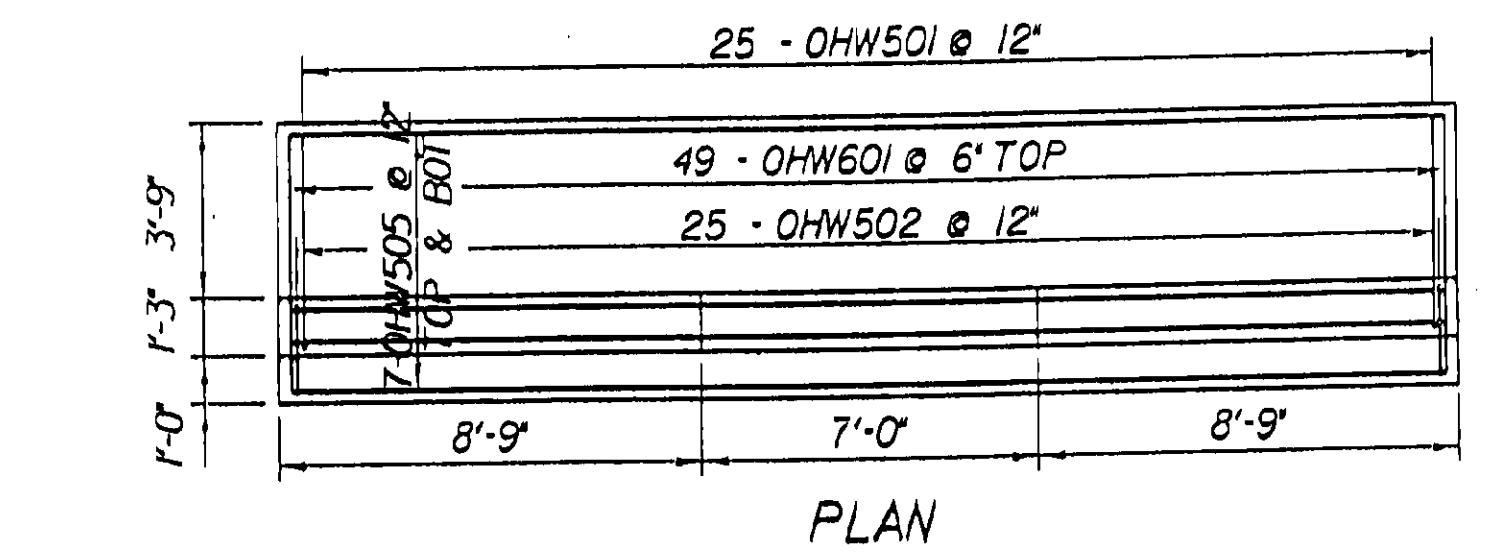
GEOMETRY



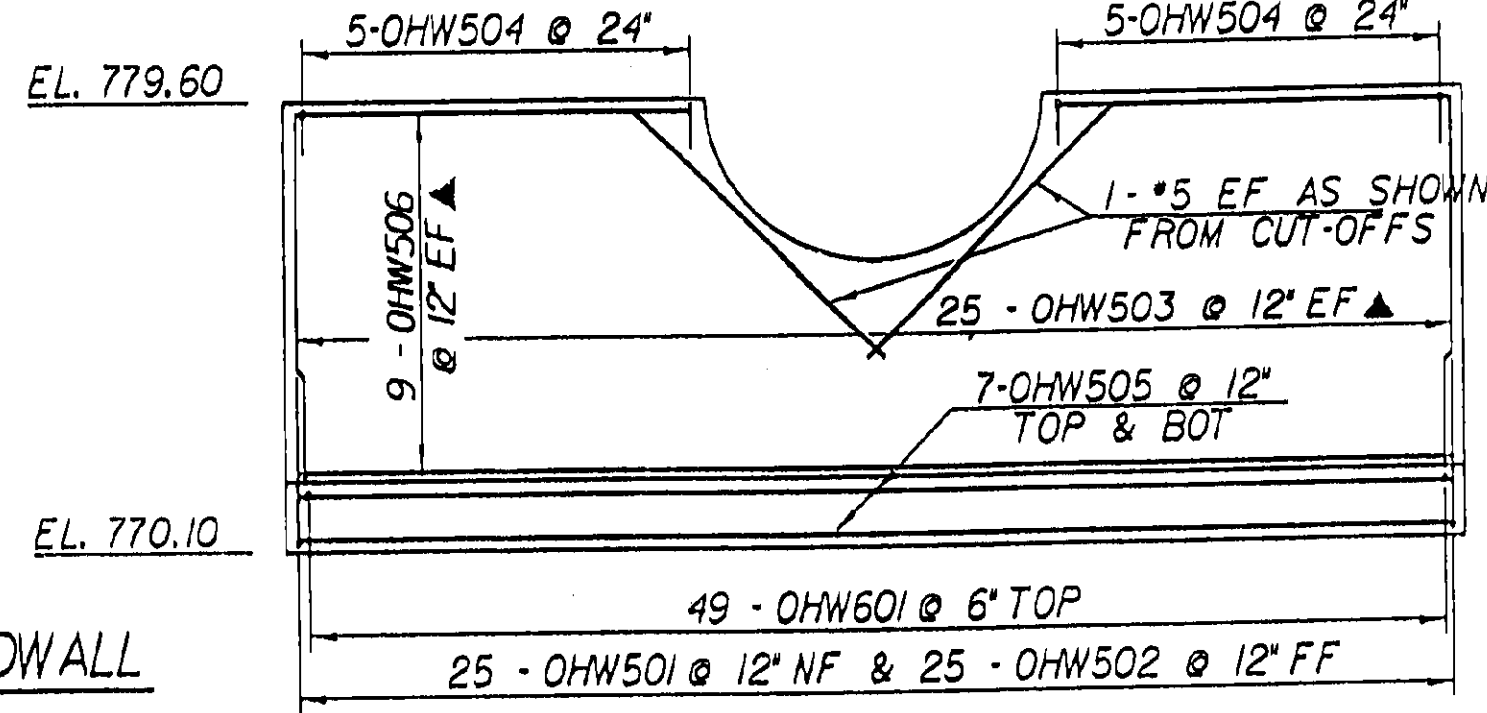
ELEVATION

INLET HEADWALL
1/4" = 1'-0"

OUTLET HEADWALL
1/4" = 1'-0"



PLAN



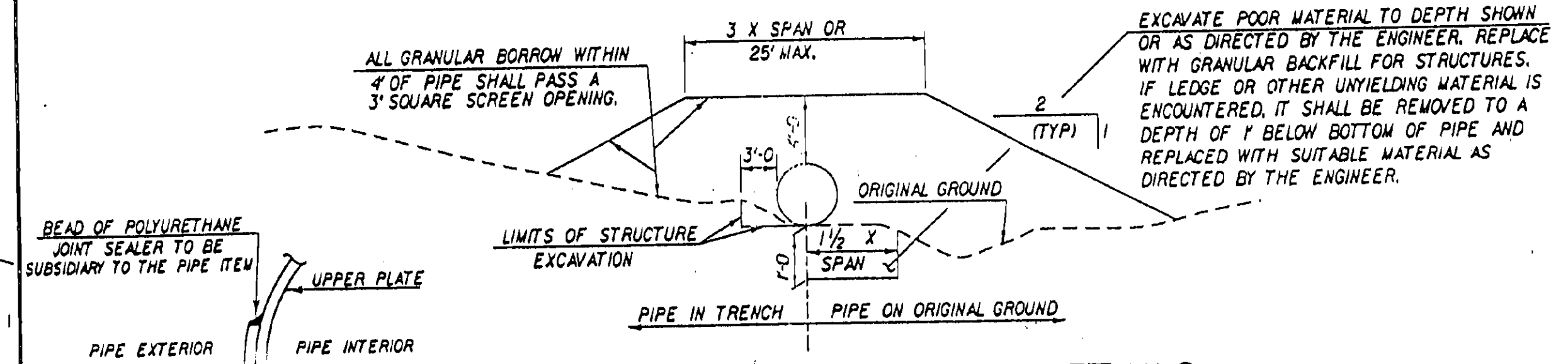
ELEVATION

DETAILS OF STRUCTURAL PLATE PIPE CULVERTS

	ALUMINUM
CORRUGATIONS	9" x 2 1/2"
SIZE OF PIPE OR PIPE ARCH	84"
WATERWAY AREA	38.5 SF
PLATE THICKNESS (COATED)	0.125"
BOLT SIZE	3/4"
WEIGHT PER LINEAR FOOT	61.3 LBS.
TOTAL WEIGHT	7356 LBS.

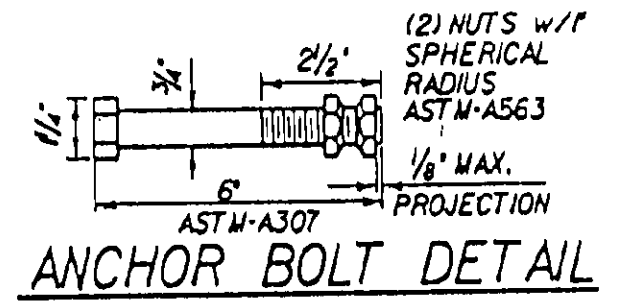
NOTES

- ALL MATERIALS AND CONSTRUCTION SHALL CONFORM TO AGENCY OF TRANSPORTATION STANDARD SPECIFICATIONS FOR CONSTRUCTION DATED 1990, AND THE LATEST A.A.S.H.T.O. STANDARD SPECIFICATIONS FOR HIGHWAY BRIDGES. DESIGN IS FOR HS-25 LIVE LOAD.
- UNLESS OTHERWISE INDICATED, 5 1/3 BOLTS PER LINEAR FOOT FOR ALUMINUM PLATES ARE REQUIRED ALONG THE LONGITUDINAL SEAMS. ALL CONNECTIONS FOR STRUCTURAL PLATE SECTIONS SHALL BE MADE WITH BOLTS MEETING ASTM A-307 (GALVANIZED AFTER FABRICATION).
- IN LONGITUDINAL JOINTS LOCATED AT THE SPRING LINE OF PLATE PIPE ARCHES OR WITHIN 20' OF HORIZONTAL ON PIPES, THE BOLT NEAREST THE VISIBLE EDGE OF LAPPED JOINTS, AS VIEWED FROM INSIDE THE PIPE, SHALL BE PLACED IN THE VALLEY OF THE CORRUGATIONS.
- WHEN NORMAL CONSTRUCTION OR REGULAR TRAFFIC IS MAINTAINED OVER THE PIPE THE CONTRACTOR SHALL MAINTAIN A MINIMUM COVER OF THREE (3) FEET OF COMPACTED MATERIAL.
- ALUMINUM PIPE WHICH IS TO BE IN CONTACT WITH CONCRETE SHALL HAVE CONTACT SURFACES THOROUGHLY COATED WITH BITUMINOUS OR ASPHALTIC PAINT.
- PIPES SHALL BE FACTORY ELONGATED 5% (PIPE ARCHES SHALL NOT BE ELONGATED).
- THE ENDS OF THE PIPE SHALL BE CUT SQUARE.
- THE CONTRACTOR SHALL INCLUDE AT THE OUTLET END, A 10 FOOT PIECE OF 6" UNDERDRAIN EACH SIDE ON SAME GRADIENT AS CULVERT CONFORMING TO SUBSECTIONS 710.0. THE COST SHALL BE INCLUDED IN THE UNIT PRICE BID FOR THE CULVERT PIPE.

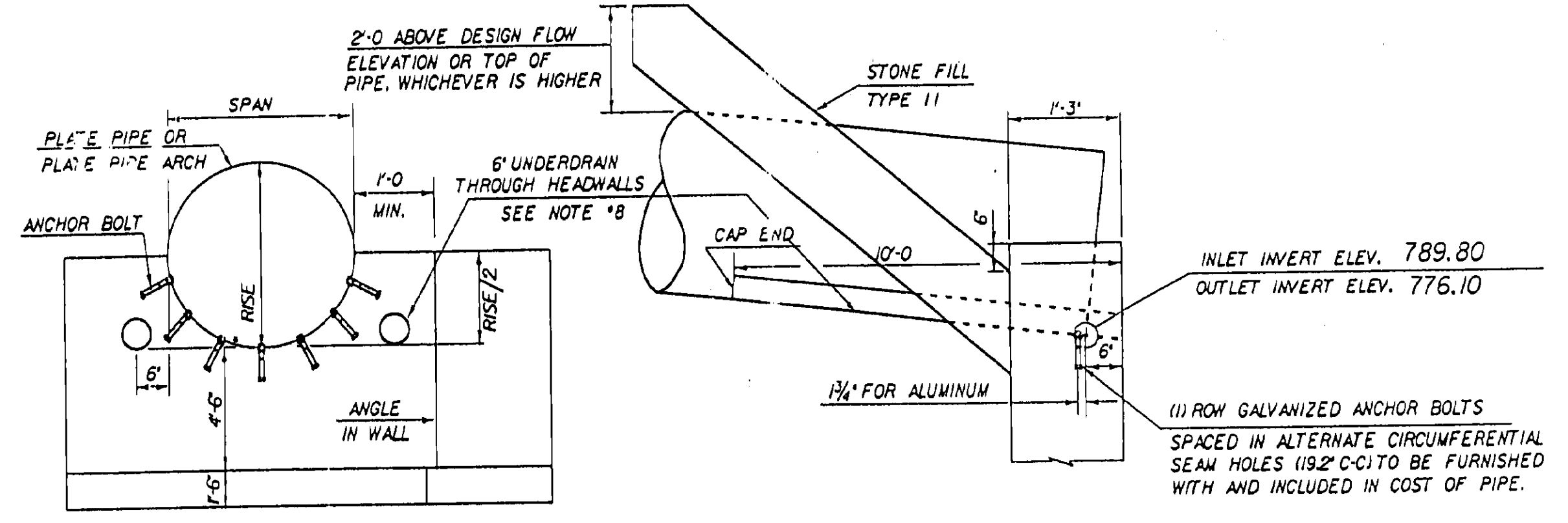


EXCAVATION AND BACKFILL DETAILS

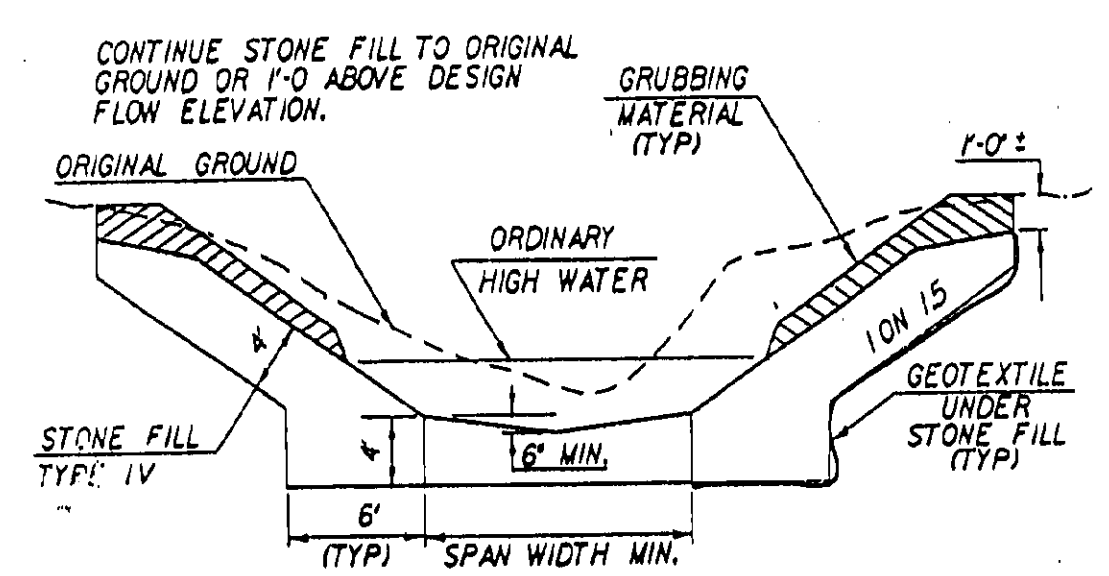
LAP DETAIL



ANCHOR BOLT DETAIL



CRADLE HEADWALL DETAILS



TYPICAL CHANNEL SECTION

STATE OF VERMONT
AGENCY OF TRANSPORTATION

Town Of	GROTON	Bridge No.	
Highway No.	US 302	Log Sta.	388+00
		Surv. Sta.	
US 302 OVER CLARK HATCH BROOK			
DETAILS FOR 84" X 120" CAAPP			
Designed By	RSD & R WHITCOMB	Drawn By	RAW & R WHITCOMB
Checked By	Date	Bridge Design Supervisor	Date
	G ROY	J H WEAVER	
PROJECT	GROTON- RYEGATE	PROJECT NO.	F026-1(30)
I.G.C. Info.	/str/3/78d073/sd073.dgn		sd073pd1
Bridge Sheet No.	2 OF 5	Sheet	76 OF 152

HYDRAULIC DATA

DRAINAGE AREA	1.25 SQ MIDESIGN FLOW Q50	DESIGN OUTLET VELOCITY	23.8 FPS
DESIGN TAILWATER DEPTH	2.1 FT	ELEVATION	778.2
ORDINARY HIGH WATER DEPTH	0.5 FT		
Q 10 FLOW	160 CFS	HEADWATER ELEVATION	794.84
Q 25 FLOW	200 CFS	HEADWATER ELEVATION	795.61
Q 50 FLOW	275 CFS	HEADWATER ELEVATION	797.08
Q 100 FLOW	300 CFS	HEADWATER ELEVATION	797.50
COMMENTS			