

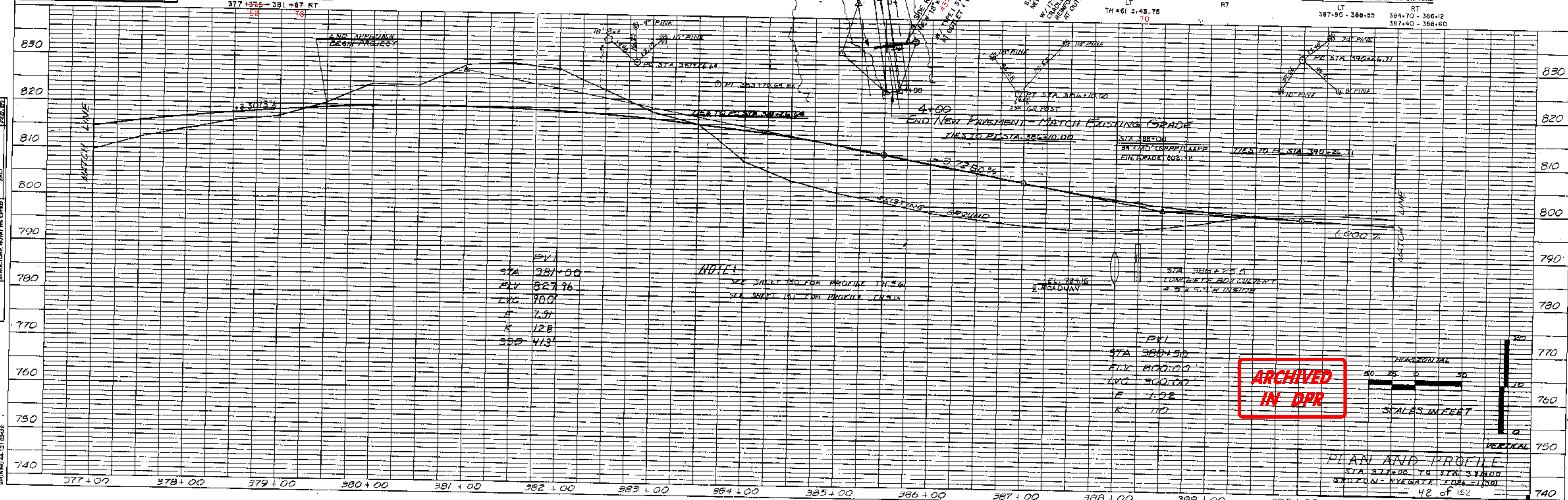
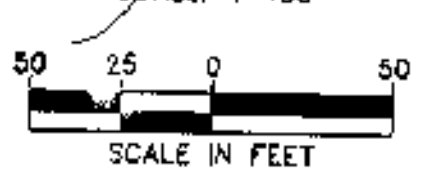
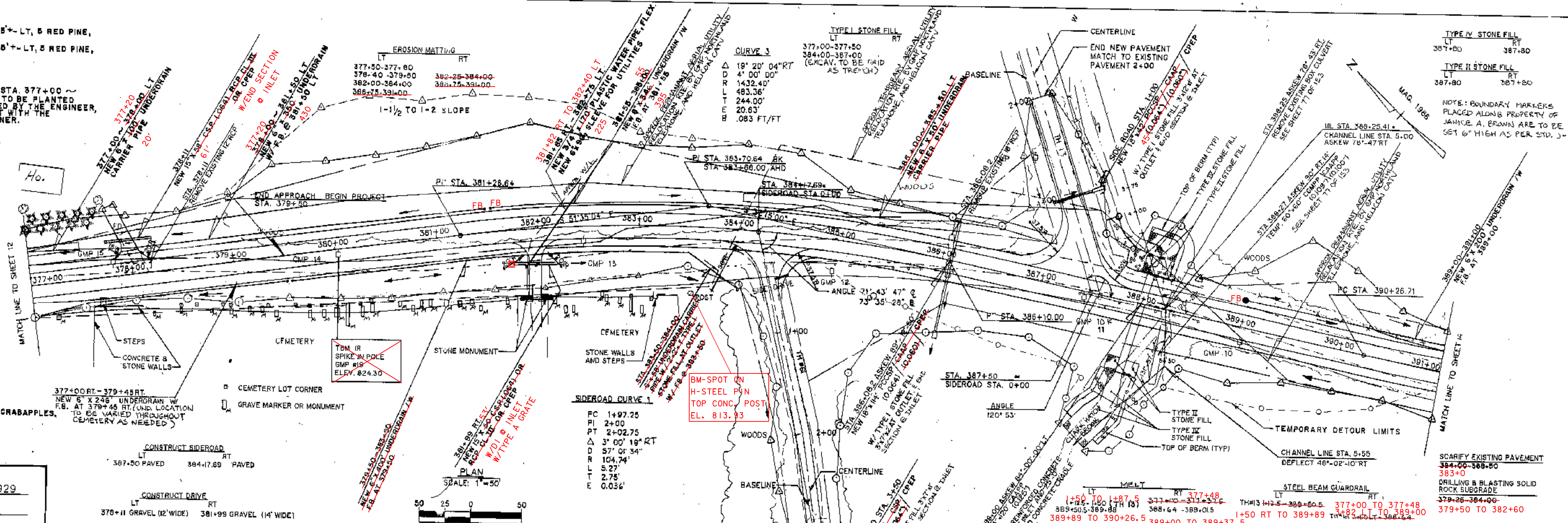
EVERGREEN TREES
 377+00~377+75, 65'-LT, 5 RED PINE,
 10' HEIGHT @ 15' C-C
 377+00~377+75, 65'-LT, 5 RED PINE,
 10' HEIGHT @ 15' C-C

NOTE: NEW TREES @ STA. 377+00 ~
 377+75 ARE TO BE PLANTED
 AS DETERMINED BY THE ENGINEER,
 IN AGREEMENT WITH THE
 PROPERTY OWNER.

DATE	BY	REVISION
06/13/2025	CHB	ISSUED FOR BIDDING
06/13/2025	CHB	REVISED PER COMMENTS
06/13/2025	CHB	REVISED PER COMMENTS
06/13/2025	CHB	REVISED PER COMMENTS

PLAN	DATE	BY	REVISION
06/13/2025	CHB	ISSUED FOR BIDDING	
06/13/2025	CHB	REVISED PER COMMENTS	
06/13/2025	CHB	REVISED PER COMMENTS	
06/13/2025	CHB	REVISED PER COMMENTS	

DATUM	VERTICAL	NGVD 1929
	HORIZONTAL	N/A



DATE	BY	REVISION
06/13/2025	CHB	ISSUED FOR BIDDING
06/13/2025	CHB	REVISED PER COMMENTS
06/13/2025	CHB	REVISED PER COMMENTS
06/13/2025	CHB	REVISED PER COMMENTS

BRUNING 44-13158-25

PLAN AND PROFILE
 STA 377+00 TO STA 391+00
 42 OF 152