

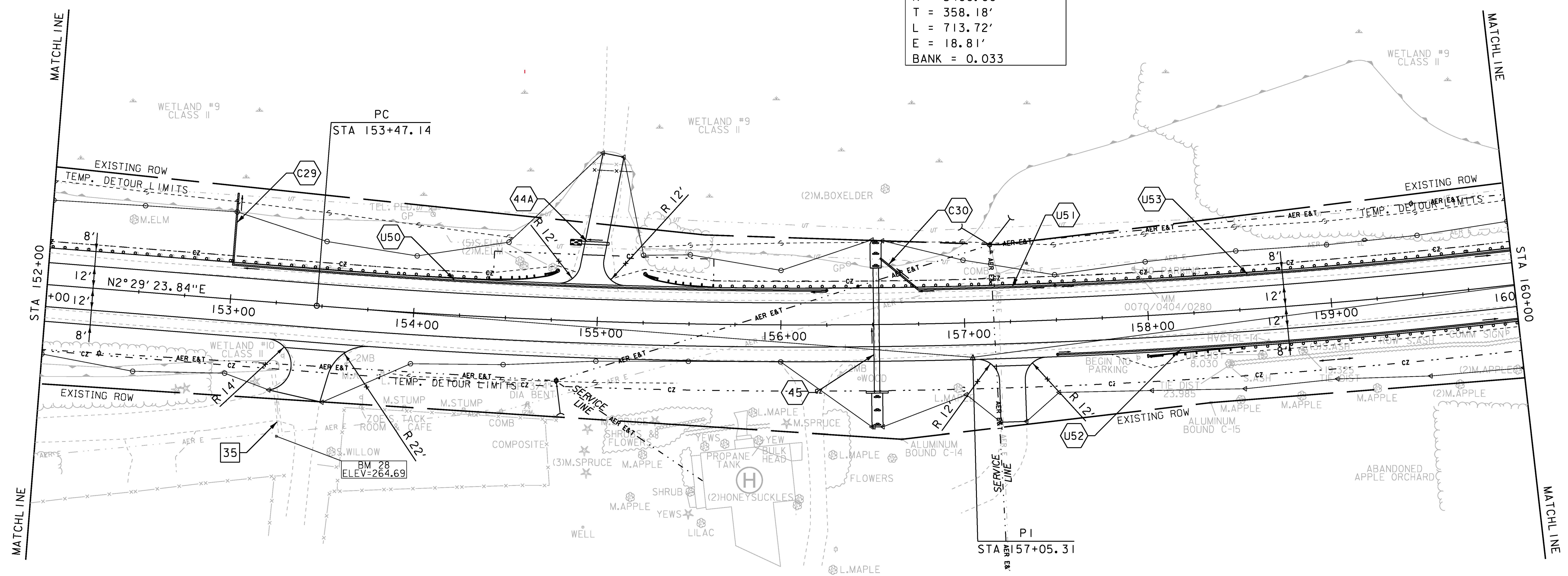
CONSTRUCT GRAVEL DRIVES		
LOCATION/TYPE	RADII STA/OFFSET	APPROX. WIDTH
STA 153+54 RT/(R)	STA 153+21.78/34.00 FT STA 153+77.25/42.00 FT	28 FT
STA 154+91 LT/(F)	STA 154+77.80/32.00 FT STA 155+14.59/32.00 FT	12 FT
STA 157+25 RT/(R)	STA 157+06.20/32.00 FT STA 157+43.85/32.00 FT	14 FT

RELOCATE MAILBOX, MULTIPLE SUPPORT  
 STA 153+65 RT (2)  
 STA 156+31 RT (2)  
STEEL BEAM GUARDRAIL, GALVANIZED  
 STA 152+00 - 154+40 LT  
~~STA 155+63 - 160+00 LT~~  
~~STA 158+50 - 160+00 RT~~  
MANUFACTURED TERMINAL SECTION, FLARED  
 STA 154+40 - 154+78 LT  
~~STA 155+25 - 155+63 LT~~  
MANUFACTURED TERMINAL SECTION, TANGENT  
~~STA 158+00 - 158+50 RT~~  
REMOVAL AND DISPOSAL OF GUARDRAIL  
 STA 152+00 - 153+64 LT

REMOVAL AND DISPOSAL OF GUIDE POSTS  
 STA 154+07 LT  
 STA 156+37 LT  
REMOVING AND RESETTING FENCE  
 STA 154+93 - 155+17 LT  
SPECIAL PROVISION (REMOVE AND RESET COMMERCIAL SIGN)  
 STA 153+75 RT  
SPECIAL PROVISION (HAND-PLACED BITUMINOUS CONCRETE MATERIAL, DRIVES)  
 STA 153+54 RT  
 STA 154+91 LT  
 STA 157+25 RT

Eliminated as per WO # 60.

CURVE #11 DATA	
DELTA	= 12°01'39" LT
D	= 1°41'07"
R	= 3400.00'
T	= 358.18'
L	= 713.72'
E	= 18.81'
BANK	= 0.033



EXISTING DRAINAGE  
 35 STA 153+30 RT  
 RETAIN EXISTING 24" RCP

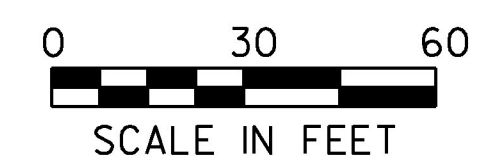
NEW DRAINAGE  
 44A ~~STA 154+90 - 155+05 LT~~  
~~NEW 18" X 20' CPEP~~  
~~POSITION DETERMINED IN FIELD~~  
~~W/TYPE I STONE PAD AT OUTLET~~  
 45 STA 156+52 C/L  
 NEW 36" X 68' CPEP  
 W/CAST IN PLACE STRAIGHT HEADWALL AT INLET  
 W/TYPE II STONE PAD AT INLET & OUTLET  
 REMOVE EXISTING 24" RCP

WO # 73 DR # 44-A  
 Eliminated

8-INCH UNDERDRAIN  
 U50 STA 153+00 - 156+25 LT  
 NEW 8" X 325' UNDERDRAIN  
 W/FLUSHING BASIN AT 156+25 LT  
 U51 STA 156+75 - 157+50 LT  
 NEW 8" X 175' UNDERDRAIN  
 W/FLUSHING BASIN AT 157+50 LT

8-INCH UNDERDRAIN CARRIER PIPE  
 U52 STA 157+50 - 160+00 RT  
 NEW 8" X 250' UNDERDRAIN  
 W/FLUSHING BASIN AT 157+50 RT  
 U53 STA 157+50 - 160+00 LT  
 NEW 8" X 150' UNDERDRAIN  
 W/FLUSHING BASIN AT 157+50 LT

8-INCH UNDERDRAIN CARRIER PIPE  
 C29 STA 153+00 LT  
 NEW 8" X 40' UD CARRIER PIPE  
 C30 STA 156+53 - 156+75 LT  
 NEW 8" X 27' UD CARRIER PIPE



PROJECT NAME:	CHARLOTTE
PROJECT NUMBER:	F EGC 019-4(20)
FILE NAME:	d78d062_nul_bdr.dgn
DESIGNED BY:	B. KIPP
PROJECT LEADER:	K. UPMAL
CHECKED BY:	C. LEACH
PLAN SHEET 19	SHEET 99 OF 499
PLOT DATE:	15-MAR-2016
DRAWN BY:	B. KIPP