

CONSTRUCT GRAVEL DRIVES		
LOCATION/TYPE	RADII STA/OFFSET	APPROX. WIDTH
STA 118+33 LT/(R)	STA 118+16.01/42.00 FT STA 118+50.83/42.00 FT	11 FT

CONSTRUCT PAVED DRIVES		
LOCATION/TYPE	RADII STA/OFFSET	APPROX. WIDTH
STA 117+12 RT/(R)	STA 116+92.78/32.00 FT STA 117+29.02/32.00 FT	11 FT

STEEL BEAM GUARDRAIL, GALVANIZED  
STA 117+49 - 118+12 RT

MANUFACTURED TERMINAL SECTION, FLARED  
STA 118+12 - 118+50 RT

REMOVAL AND DISPOSAL OF GUARDRAIL  
STA 117+33 - 118+22 RT

REMOVAL AND DISPOSAL OF GUIDE POSTS  
STA 114+23 LT  
STA 117+72 LT

SPECIAL PROVISION (HAND-PLACED BITUMINOUS CONCRETE MATERIAL, DRIVES)  
STA 118+33 LT

SPECIAL PROVISION (STEEL BEAM GUARDRAIL GALVANIZED/ 8 FOOT RADIUS)  
STA 117+40 - 117+49 RT

117+72.5 - 118+72.5 o/s Rt.

WO # 66

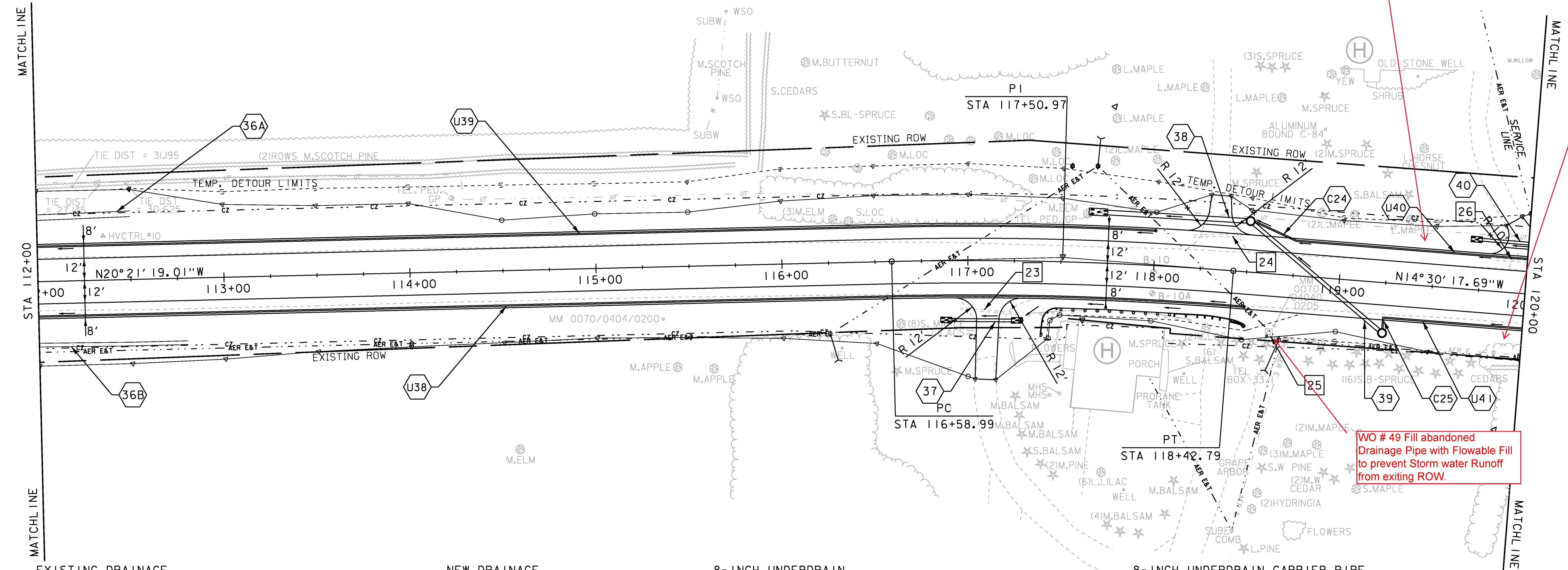
117+35 - 117+72.5 o/s Rt.

118+72.5 - 119+10 o/s Rt.

WO # 99 Install Stone Lined Swale @ 119+25 - 129+75 o/s Rt.

WO # 90 New Left Turn sign and Higbee Road sign.

WO # 49 Fill abandoned Drainage Pipe with Flowable Fill to prevent Storm water Runoff from exiting ROW.



- EXISTING DRAINAGE**
- 23 STA 116+96 - 117+28 RT  
REMOVE EXISTING 12" CGMP
  - 24 STA 118+20 - 118+46 LT  
REMOVE EXISTING 15" CGMP
  - 25 STA 118+64 RT  
REMOVE EXISTING DI
  - 26 STA 119+83 - 120+00 LT  
REMOVE EXISTING 15" CGMP

- NEW DRAINAGE**
- 36A STA 112+00 - 112+50 LT  
CONSTRUCT GRASS LINED TREATMENT SWALE  
SEE GRASS LINED TREATMENT SWALE DETAILS
  - 36B STA 112+00 - 112+80 RT  
CONSTRUCT GRASS LINED TREATMENT SWALE  
SEE GRASS LINED TREATMENT SWALE DETAILS

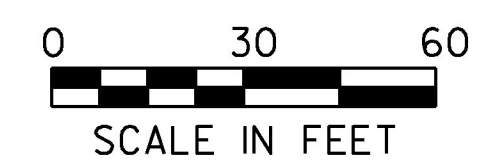
- NEW DRAINAGE**
- 37 STA 116+91 - 117+24 RT  
NEW 18" X 32' CPEP  
W/STONE PAD AT INLET & OUTLET
  - 38 STA 117+74 - 118+49 LT  
NEW 30" X 75' CPEP  
W/ STONE PAD AT OUTLET  
NEW PRCCB W/TYPE B GRATE (2)
  - 39 STA 118+88 C/L, ANGLE = 36°  
NEW 24" X 90' CPEP  
NEW PRCCB W/TYPE B GRATE (2)
  - 40 STA 119+75 - 120+00 LT  
NEW 18" X 25' CPEP  
W/STONE PAD AT INLET & OUTLET

- 8-INCH UNDERDRAIN**
- U38 STA 112+00 - 118+50 RT  
NEW 8" X 650' UNDERDRAIN  
W/FLUSHING BASIN AT 118+50 RT
  - U39 STA 112+00 - 118+00 LT  
NEW 8" X 600' UNDERDRAIN  
W/FLUSHING BASIN AT 118+00 LT
  - U40 STA 118+75 - 120+00 LT  
NEW 8" X 125' UNDERDRAIN  
W/FLUSHING BASIN AT 124+00 LT
  - U41 STA 119+25 - 120+00 RT  
NEW 8" X 75' UNDERDRAIN  
W/FLUSHING BASIN AT 124+00 RT

**CURVE #8 DATA**

DELTA = 5°51'01" RT
D = 3°10'59"
R = 1800.00'
T = 91.98'
L = 183.79'
E = 2.35'
BANK = 0.055

- 8-INCH UNDERDRAIN CARRIER PIPE**
- C24 STA 118+50 - 118+75 LT  
NEW 8" X 26' UD CARRIER PIPE
  - C25 STA 119+25 RT  
NEW 8" X 8' UD CARRIER PIPE



PROJECT NAME: CHARLOTTE	PLOT DATE: 15-MAR-2016
PROJECT NUMBER: F EGC 019-4(20)	DRAWN BY: B. KIPP
FILE NAME: d78d062_nul_bdr.dgn	CHECKED BY: C. LEACH
PROJECT LEADER: K. UPMAL	SHEET 89 OF 499
DESIGNED BY: B. KIPP	
PLAN SHEET 14	