

LOCATION/TYPE	RADII STA/OFFSET	APPROX. WIDTH
CONSTRUCT GRAVEL DRIVES		
STA 92+57 RT/(C)	STA 92+22.26/42.00 FT STA 92+78.91/42.00 FT	12 FT

CHAIN-LINK FENCE, 6 FEET
 STA 91+44 - 91+62 RT
 STA 91+44 - 91+62 LT

STEEL BEAM GUARDRAIL, GALVANIZED/NESTED
 STA 90+98 - 91+98 RT
 STA 90+98 - 91+98 LT

STONE FILL, TYPE II
 STA 3+50 - 5+87 RT
 STA 3+50 - 5+87 LT
 STA 20+20 - 20+75 RT
 STA 20+20 - 20+75 LT

REMOVAL OF EXISTING FENCE
 STA 91+48 - 92+02 LT (ABANDONED WOVEN WIRE)
 STA 92+18 - 92+21 LT (ABANDONED WOVEN WIRE)
 STA 92+35 - 93+60 LT (ABANDONED WOVEN WIRE)
 STA 94+79 - 95+15 LT (ABANDONED WOVEN WIRE)

STEEL BEAM GUARDRAIL, GALVANIZED
 STA 90+10 - 90+98 RT
 STA 90+48 - 90+98 LT
 STA 91+98 - 93+48 LT

REMOVAL AND DISPOSAL OF GUIDE POSTS
 STA 91+85 RT
 STA 91+90 RT
 STA 92+21 RT

MANUFACTURED TERMINAL SECTION, FLARED
 STA 89+72 - 90+10 RT
 STA 90+10 - 90+48 LT
 STA 91+98 - 92+36 RT
 STA 93+47 - 93+85 LT

SPECIAL PROVISION (HAND-PLACED BITUMINOUS CONCRETE MATERIAL, DRIVES)
 STA 92+57 RT

SPECIAL PROVISION (REMOVE AND STOCKPILE STONEWALL)
 STA 88+00 - 90+42 RT

PI WEST PATH STA. 12+09.63 =
 EAST PATH STA. 2+41.36 =
 POB EAST PATH
 STATION 11+87.11 (POB)
 BEGIN WEST PATH APPROACH
 N 21°24'33" W

WO # 70 Add Beam GR @ 93+13 - 94+00 o/s Rt.

92+00 - 93+50 o/s Lt.

91+00 - 92+00 o/s Lt.

90+99 - 91+99 o/s Rt.

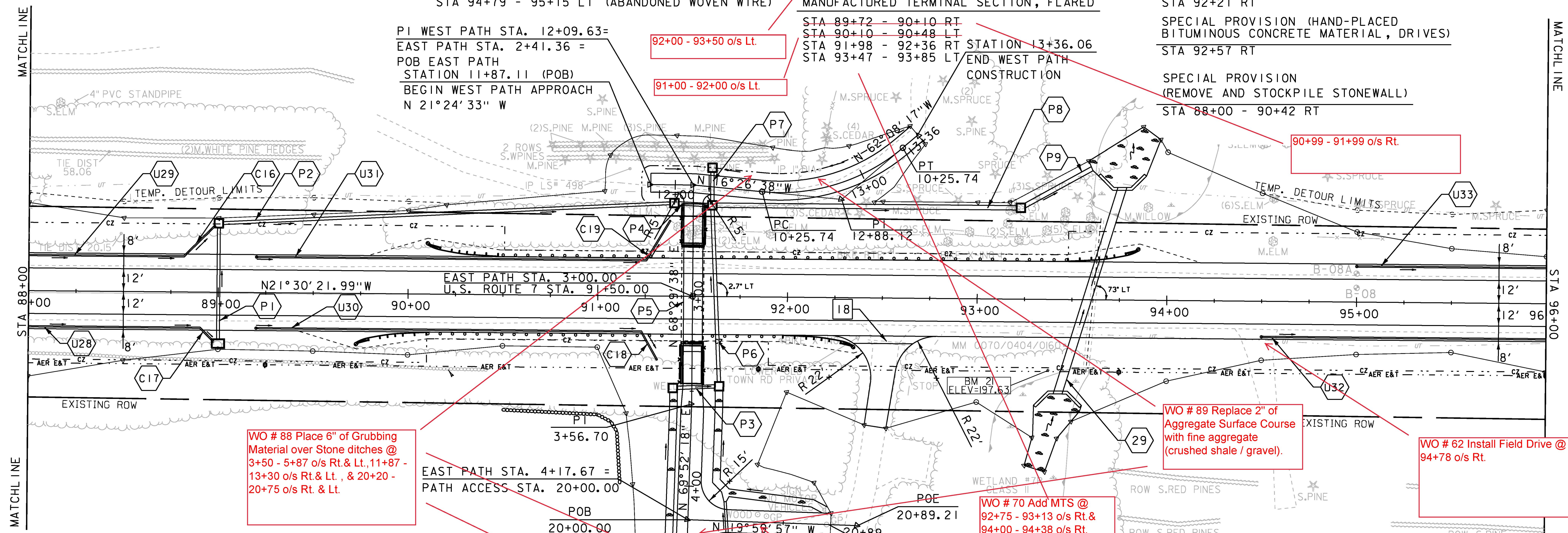
WO # 89 Replace 2" of Aggregate Surface Course with fine aggregate (crushed shale / gravel).

WO # 62 Install Field Drive @ Sta. 94+78 o/s Rt.

WO # 70 Add MTS @ 92+75 - 93+13 o/s Rt. & 94+00 - 94+38 o/s Rt.

WO # 83 Install 2 Boulders @ Bike Path Access Sta. 20+25.

WO # 88 Place 6" of Grubbing Material over Stone ditches @ 3+50 - 5+87 o/s Rt. & Lt., 11+87 - 13+30 o/s Rt. & Lt., & 20+20 - 20+75 o/s Rt. & Lt.



EXISTING DRAINAGE
 18 STA 92+43 - 92+62 RT
 REMOVE EXISTING 15" CGMP

NEW DRAINAGE
 29 STA 93+58.00 C/L, ANGLE = 73° LT
 NEW 54" X 116' CPEP
 W/CAST IN PLACE CONCRETE HEADWALLS & WINGWALLS
 STONE FILL TYPE II AT INLET & OUTLET
 SEE DETAIL SHEETS
 REMOVE EXISTING 36" ACCMP AND HEADWALL
 PC 5+08.45

NEW PEDESTRIAN BIKE PATH DRAINAGE
 P1 STA 89+00 C/L
 NEW 18" X 63' CPEP
 NEW PRCDI W/TYPE A GRATE (2)
 P2 STA 89+00 - 91+40 LT
 NEW 18" X 240' CPEP
 NEW PRCDI W/TYPE A GRATE
 P3 STA 91+40 - 91+62 RT
 NEW 18" X 22' CPEP
 NEW PRCDI W/TYPE A GRATE
 P4 STA 91+40 - 91+60 LT
 NEW 18" X 20' CPEP
 NEW PRCDI W/TYPE B GRATE
 P5 STA 91+50 C/L BR #141A
 NEW 10' X 10' X 95' PRCC BOX
 PEDESTRIAN-BIKE UNDERPASS
 SEE BRIDGE DETAIL SHEETS

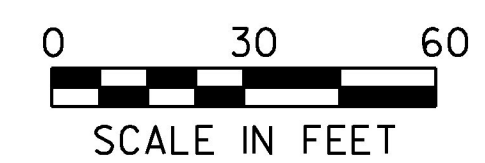
P6 STA 91+60 C/L
 NEW 18" X 97' CPEP
 NEW PRCDI W/TYPE A GRATE
 P7 STA 91+60 LT
 NEW 18" X 20' CPEP
 NEW PRCDI W/TYPE A GRATE
 P8 STA 91+60 - 93+23 LT
 NEW 24" X 163' CPEP
 NEW PRCDI W/TYPE A GRATE
 P9 STA 93+23 - 93+60 LT
 NEW 24" X 41' CPEP
 NEW PRCDI W/COVER
 STONE FILL TYPE II AT OUTLET
 P10 STA 20+20 CL
 NEW 18" X 20' CPEP
 STONE FILL TYPE II AT INLET AND OUTLET

8-INCH UNDERDRAIN
 U28 STA 88+00 - 88+91 RT
 NEW 8" X 91' UNDERDRAIN
 W/FLUSHING BASIN AT 84+80 RT
 U29 STA 88+00 - 88+82 LT
 NEW 8" X 82' UNDERDRAIN
 W/FLUSHING BASIN AT 84+80 LT
 U30 STA 89+20 - 91+23 RT
 NEW 8" X 203' UNDERDRAIN
 W/FLUSHING BASIN AT 89+20 RT
 U31 STA 89+20 - 91+25 LT
 NEW 8" X 205' UNDERDRAIN
 W/FLUSHING BASIN AT 89+20 LT
 U32 STA 94+50 - 96+00 RT
 NEW 8" X 150' UNDERDRAIN
 W/FLUSHING BASIN AT 94+50 RT
 U33 STA 95+00 - 96+00 LT
 NEW 8" X 100' UNDERDRAIN
 W/FLUSHING BASIN AT 95+00 LT

8-INCH UNDERDRAIN CARRIER PIPE
 C16 STA 88+82 - 88+98 LT
 NEW 8" X 24' UD CARRIER PIPE
 C17 STA 88+91 - 88+98 RT
 NEW 8" X 11' UD CARRIER PIPE
 C18 STA 91+23 - 91+32 RT
 NEW 8" X 18' UD CARRIER PIPE
 C19 STA 91+25 - 91+38 LT
 NEW 8" X 25' UD CARRIER PIPE

60.0'
 238.0'

16.0'



PROJECT NAME: CHARLOTTE	PLOT DATE: 15-MAR-2016
PROJECT NUMBER: F EGC 019-4(20)	DRAWN BY: B. KIPP
FILE NAME: d78d062_nul_bdr.dgn	CHECKED BY: C. LEACH
PROJECT LEADER: K. UPMAL	SHEET 83 OF 499
DESIGNED BY: B. KIPP	
PLAN SHEET II	