

CONSTRUCT GRAVEL DRIVES		
LOCATION/TYPE	RADII STA/OFFSET	APPROX. WIDTH
STA 56+10 LT/(R)	STA 55+88.06/32.00 FT STA 56+33.10/32.00 FT	21 FT
STA 60+16 LT/(R)	STA 59+88.92/40.00 FT STA 60+40.92/40.00 FT	12 FT

CONSTRUCT PAVED DRIVES		
LOCATION/TYPE	RADII STA/OFFSET	APPROX. WIDTH
STA 56+50 RT/(C)	STA 56+06.78/28.50 FT STA 56+74.52/28.50 FT	30 FT
STA 58+00 RT/(C)	STA 57+73.87/28.50 FT STA 58+41.20/50.00 FT	30 FT
STA 63+09 LT/(C)	STA 62+76.05/45.00 FT STA 63+50.00/45.00 FT	24 FT

RELOCATE MAILBOX, SINGLE SUPPORT
STA 56+30 RT
STA 63+29 LT

RELOCATE MAILBOX, MULTIPLE SUPPORT
STA 60+90 RT (3)

STEEL BEAM GUARDRAIL, GALVANIZED
STA 63+75 - 64+00 LT

MANUFACTURED TERMINAL SECTION, FLARED
STA 63+37 - 63+75 LT

REMOVAL OF EXISTING TRAFFIC CONTROL SIGNAL SYSTEM
STA 60+16

SPECIAL PROVISION (REMOVE AND STOCKPILE STONEWALL)
STA 60+79 - 64+00 RT

SPECIAL PROVISION (HAND-PLACED BITUMINOUS CONCRETE MATERIAL, DRIVES)
STA 56+10 LT
STA 60+16 LT

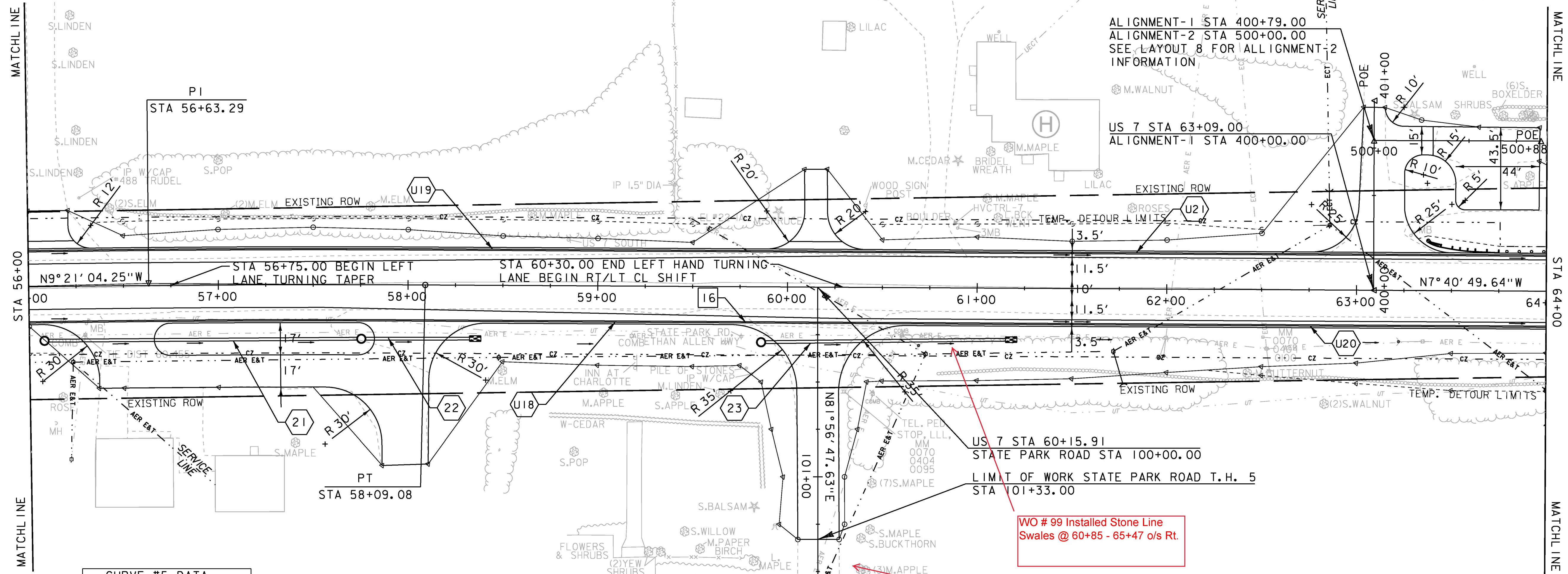
66+00 - 66+38 o/s Lt.

63+75 - 66+00 o/s Lt.

DRIVE 63+09 LT ALIGNMENT-1 INFORMATION			
	NORTHING	EASTING	
POB	400+00.00	648752.0693	1447919.9573
POE	401+00.00	648738.5047	1447820.8815
BEARING	S 82°12'14.60" W		

ALIGNMENT-1 STA 400+79.00
ALIGNMENT-2 STA 500+00.00
SEE LAYOUT 8 FOR ALL ALIGNMENT-2 INFORMATION

US 7 STA 63+09.00
ALIGNMENT-1 STA 400+00.00



CURVE #5 DATA	
DELTA =	1°40'15" RT
D =	0°34'23"
R =	10000.00'
T =	145.81'
L =	291.60'
E =	1.06'
BANK =	NC

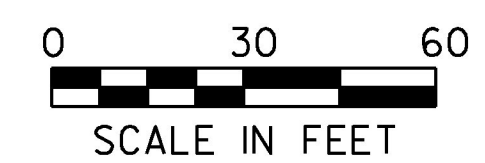
- | | | |
|--|--|--|
| <p>EXISTING DRAINAGE</p> <p>16 STA 59+76 - 60+53 RT
REMOVE EXISTING 18" CGMP</p> | <p>NEW DRAINAGE</p> <p>21 STA 56+10 - 57+73 RT
NEW 18" X 164' CPEP
NEW PRCCB W/TYPE A GRATE</p> <p>22 STA 57+77 - 58+33 RT
NEW 18" X 57' CPEP
NEW PRCCB W/TYPE A GRATE
W/STONE PAD AT OUTLET</p> <p>23 STA 59+88 - 61+15 RT
NEW 18" X 128' CPEP
NEW PRCCB W/TYPE B GRATE
W/STONE PAD AT OUTLET</p> | <p>8-INCH UNDERDRAIN</p> <p>U18 STA 56+00 - 61+50 RT
NEW 8" X 550' UNDERDRAIN
W/FLUSHING BASIN AT 55+50 RT</p> <p>U19 STA 56+00 - 61+50 LT
NEW 8" X 550' UNDERDRAIN
W/FLUSHING BASIN AT 55+50 LT</p> <p>U20 STA 61+50 - 64+00 RT
NEW 8" X 250' UNDERDRAIN
W/FLUSHING BASIN AT 61+50 RT</p> <p>U21 STA 61+50 - 64+00 LT
NEW 8" X 250' UNDERDRAIN
W/FLUSHING BASIN AT 61+50 LT</p> |
|--|--|--|

WO # 99 Installed Stone Line
Swales @ 60+85 - 65+47 o/s Rt.

WO # 91 Replace existing Stop
sign & install Solar -Power
Flashing Beacon 300' from Stop
Bar.

160.0'

58.0'



PROJECT NAME:	CHARLOTTE	PLOT DATE:	15-MAR-2016
PROJECT NUMBER:	F EGC 019-4(20)	DRAWN BY:	B. KIPP
FILE NAME:	d78d062_nul_bdr.dgn	CHECKED BY:	C. LEACH
PROJECT LEADER:	K. UPMAL	SHEET	75 OF 499
DESIGNED BY:	B. KIPP		
PLAN SHEET 7			