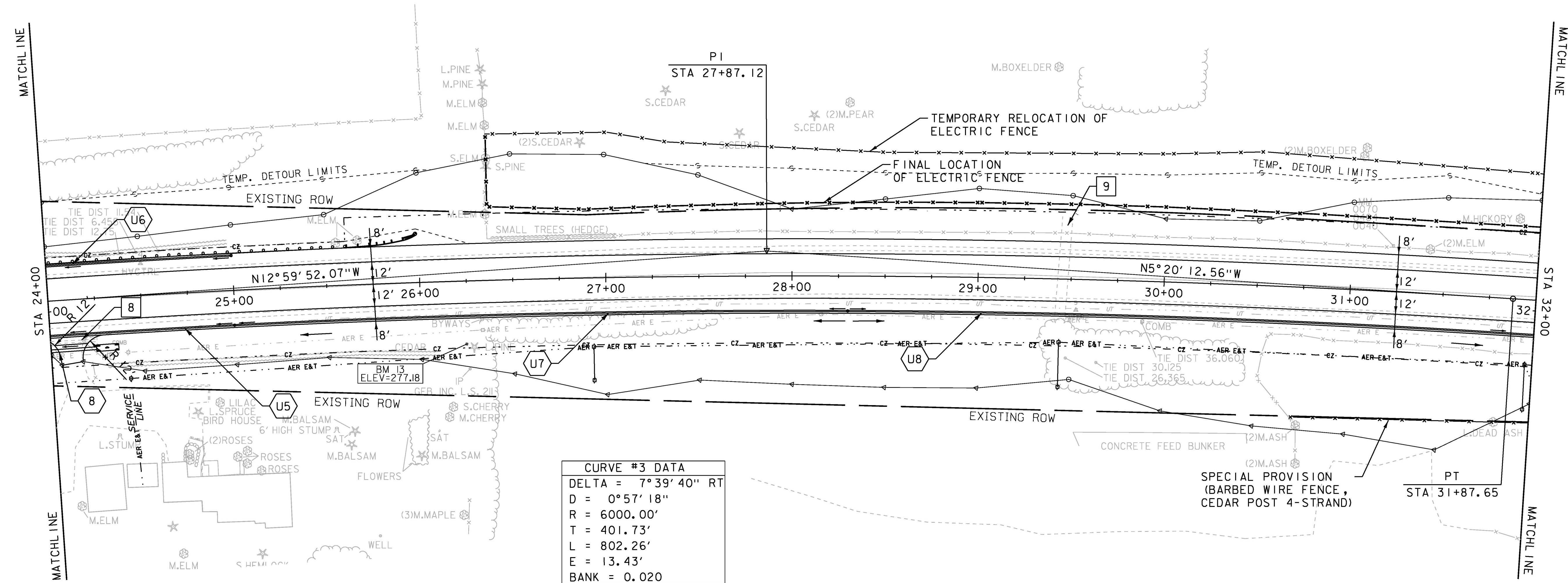
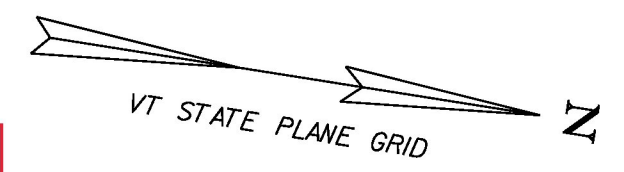


| CONSTRUCT GRAVEL DRIVES |  |               |
|-------------------------|--|---------------|
| LOCATION/TYPE           | RADII STA/OFFSET                               | APPROX. WIDTH |
| STA 24+08 RT/(R)        | STA 23+92.97/32.00 FT<br>STA 24+28.98/32.00 FT | 12 FT         |

**REMOVING LARGE STUMPS**  
 STA 24+35 RT  
 STA 25+52 RT  
**RELOCATE MAILBOX, SINGLE SUPPORT**  
 STA 24+18 RT  
**REMOVING AND RESETTING FENCE**  
**REMOVAL OF EXISTING FENCE**  
 STA 24+22 RT (ORNAMENTAL WOOD POST & RAIL)  
 STA 26+37 - 32+00 LT (WOVEN & BARBED WIRE W/WOOD POSTS)  
 STA 30+51 - 32+00 RT (ABANDONED BARBED WIRE)

**STEEL BEAM GUARDRAIL, GALVANIZED**  
 STA 24+00 - 25+61 LT  
**MANUFACTURED TERMINAL SECTION, FLARED**  
 STA 25+61 - 25+99 LT  
**SPECIAL PROVISION (HAND-PLACED BITUMINOUS CONCRETE MATERIAL, DRIVES)**  
 STA 24+08 RT  
**SPECIAL PROVISION (BARBED WIRE FENCE, CEDAR POST 4-STRAND)**  
 STA 30+70 - 32+00 RT

Field analysis determined that G.R. was not required @ this location. WO # 16.



**EXISTING DRAINAGE**

8 STA 24+00 - 24+25 RT  
 REMOVE EXISTING 15" CGMP & HDW (2)

9 STA 29+46 C/L  
 REMOVE CATTLE PASS 66" ACCGMP

**NEW DRAINAGE**

8 STA 24+00 - 24+25 RT  
 NEW 18" X 25' CPEP  
 W/STONE PAD AT INLET & OUTLET

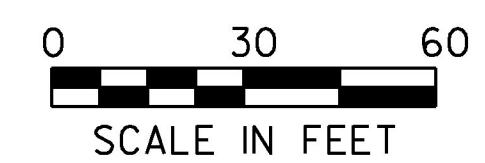
**8-INCH UNDERDRAIN**

U5 STA 24+00 - 25+00 RT  
 NEW 8" X 100' UNDERDRAIN  
 W/FLUSHING BASIN AT 25+00 RT

U6 STA 24+00 - 25+00 LT  
 NEW 8" X 100' UNDERDRAIN  
 W/FLUSHING BASIN AT 25+00 LT

U7 STA 25+00 - 28+30 RT  
 NEW 8" X 330' UNDERDRAIN  
 W/FLUSHING BASIN AT 28+30 RT

U8 STA 28+30 - 32+00 RT  
 NEW 8" X 370' UNDERDRAIN  
 W/FLUSHING BASIN AT 28+30 RT



|                 |                 |                 |                     |             |             |
|-----------------|-----------------|-----------------|---------------------|-------------|-------------|
| PROJECT NAME:   | CHARLOTTE       | FILE NAME:      | d78d062_nul_bdr.dgn | PLOT DATE:  | 15-MAR-2016 |
| PROJECT NUMBER: | F EGC 019-4(20) | PROJECT LEADER: | K. UPMAL            | DRAWN BY:   | B. KIPP     |
|                 |                 | DESIGNED BY:    | B. KIPP             | CHECKED BY: | C. LEACH    |
|                 |                 | PLAN SHEET 3    |                     | SHEET       | 67 OF 499   |