

CONSTRUCT GRAVEL DRIVES		
LOCATION/TYPE	RADIUS STA/OFFSET	APPROX. WIDTH
STA 9+63 RT/(R)	STA 9+32.64/40 FT STA 9+93.08/39 FT	23 FT
STA 11+50 RT/(R)	STA 11+30.77/32 FT STA 11+68.23/32 FT	14 FT
STA 13+66 LT/(F)	STA 13+50.14/28 FT STA 13+86.00/32 FT	16 FT

RELOCATE MAILBOX, SINGLE SUPPORT
STA 11+56 RT

RELOCATE MAILBOX, MULTIPLE SUPPORT
STA 9+82 RT (3)

REMOVING AND RESETTING FENCE
STA 10+06 - 11+25 RT (WOOD PICKET FENCE)
STA 11+61 - 12+02 RT (WOOD PICKET FENCE)

REMOVAL OF EXISTING FENCE
STA 13+20 - 13+47 RT (ABANDONED BARBED WIRE)

STEEL BEAM GUARDRAIL, GALVANIZED
STA 12+11 - 12+24 LT
STA 13+11 - 13+24 RT

STEEL BEAM GUARDRAIL, GALVANIZED/NESTED
STA 12+24 - 13+11 RT
STA 12+24 - 13+11 LT

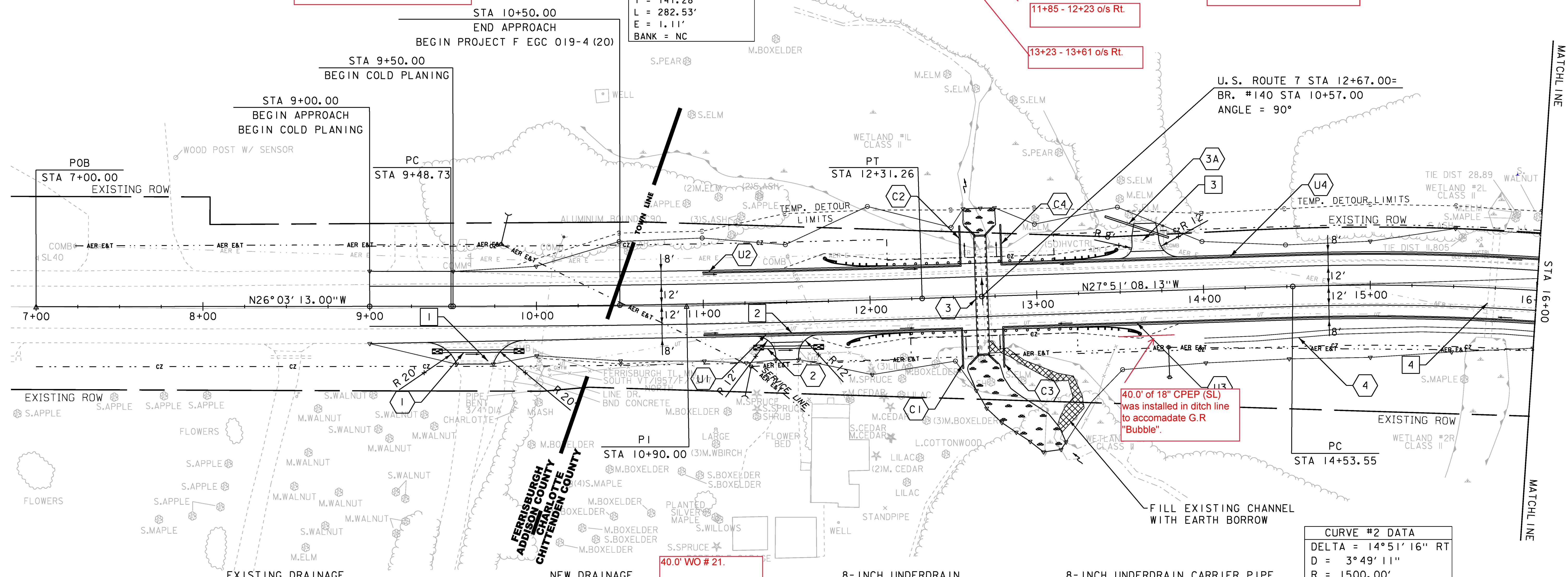
MANUFACTURED TERMINAL SECTION, FLARED
STA 11+73 - 12+11 LT
STA 11+86 - 12+24 RT
STA 13+11 - 13+49 LT
STA 13+24 - 13+63 RT

EARTH BORROW
STA 10+84 - 11+67 LT

SPECIAL PROVISION (HAND-PLACED BITUMINOUS CONCRETE MATERIAL, DRIVES)
STA 9+63 RT
STA 11+50 RT
STA 13+66 LT

New 6' High Privacy White Vinyl PVC Fencing @ 10+06 - 11+25 & 11+61 - 12+02 o/s Rt. WO # 34

CURVE #1 DATA
DELTA = 1°47'55" LT
D = 0°38'12"
R = 9000.00'
T = 141.28'
L = 282.53'
E = 1.11'
BANK = NC



Nesting not required due to field conditions.

11+85 - 12+23 o/s Rt.

13+23 - 13+61 o/s Rt.

12+11 - 13+11 o/s Lt.

12+23 - 13+33 o/s Rt.

U.S. ROUTE 7 STA 12+67.00 = BR. #140 STA 10+57.00 ANGLE = 90°

40.0' of 18" CPEP (SL) was installed in ditch line to accommodate G.R "Bubble".

40.0' WO # 21.

- EXISTING DRAINAGE**
- 1 STA 9+47 - 9+79 RT
REMOVE EXISTING 15" CPEP
 - 2 STA 11+37 - 11+62 RT
REMOVE EXISTING 18" CPEP
 - 3 STA 13+52 - 13+76 LT
REMOVE EXISTING 15" CPEP
 - 4 STA 15+73 C/L
REMOVE CATTLE PASS 48" CMP

- NEW DRAINAGE**
- 1 STA 9+44 - 9+87 RT
NEW 18" X 42' CPEP
W/STONE PAD AT INLET & OUTLET

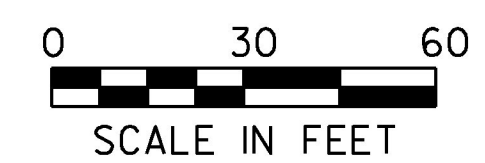
- 2 STA 11+36 - 11+66 RT
NEW 18" X 30' CPEP
W/STONE PAD AT INLET & OUTLET
- 3 STA 12+67 BR #140 ANGLE = 90°
NEW 6' X 3' X 72' PRECAST CONCRETE BOX
W/ PRECAST HEADWALLS & WINGWALLS
STONE FILL TYPE II AT INLET & OUTLET
SEE BRIDGE DETAIL SHEETS
REMOVE EXISTING 3' X 4' CONCRETE BOX,
HEADWALLS AND WINGWALLS

- 3A STA 13+42 - 13+80 LT
NEW 12" X 40' CPEP
- 4 STA 14+00 - 16+00 RT
CONSTRUCT GRASS LINED TREATMENT SWALE
SEE GRASS LINED TREATMENT SWALE DETAILS

- 8-INCH UNDERDRAIN**
- U1 STA 11+00 - 12+55 RT
NEW 8" X 155' UNDERDRAIN
W/FLUSHING BASIN AT 11+00 RT
 - U2 STA 11+00 - 12+55 LT
NEW 8" X 155' UNDERDRAIN
W/FLUSHING BASIN AT 11+00 LT
 - U3 STA 12+80 - 16+00 RT
NEW 8" X 320' UNDERDRAIN
W/FLUSHING BASIN AT 18+50 RT
 - U4 STA 12+80 - 16+00 LT
NEW 8" X 320' UNDERDRAIN
W/FLUSHING BASIN AT 18+50 LT

- 8-INCH UNDERDRAIN CARRIER PIPE**
- C1 STA 12+55 RT
NEW 8" X 24' UD CARRIER PIPE
 - C2 STA 12+55 LT
NEW 8" X 24' UD CARRIER PIPE
 - C3 STA 12+80 RT
NEW 8" X 24' UD CARRIER PIPE
 - C4 STA 12+80 LT
NEW 8" X 24' UD CARRIER PIPE

CURVE #2 DATA
DELTA = 14°51'16" RT
D = 3°49'11"
R = 1500.00'
T = 195.54'
L = 388.89'
E = 12.69'
BANK = 0.062



PROJECT NAME: CHARLOTTE
PROJECT NUMBER: F EGC 019-4(20)

FILE NAME: d78d062_nul_bdr.dgn
PROJECT LEADER: K. UPMAL
DESIGNED BY: B. KIPP
PLAN SHEET 1

PLOT DATE: 15-MAR-2016
DRAWN BY: B. KIPP
CHECKED BY: C. LEACH
SHEET 63 OF 499