

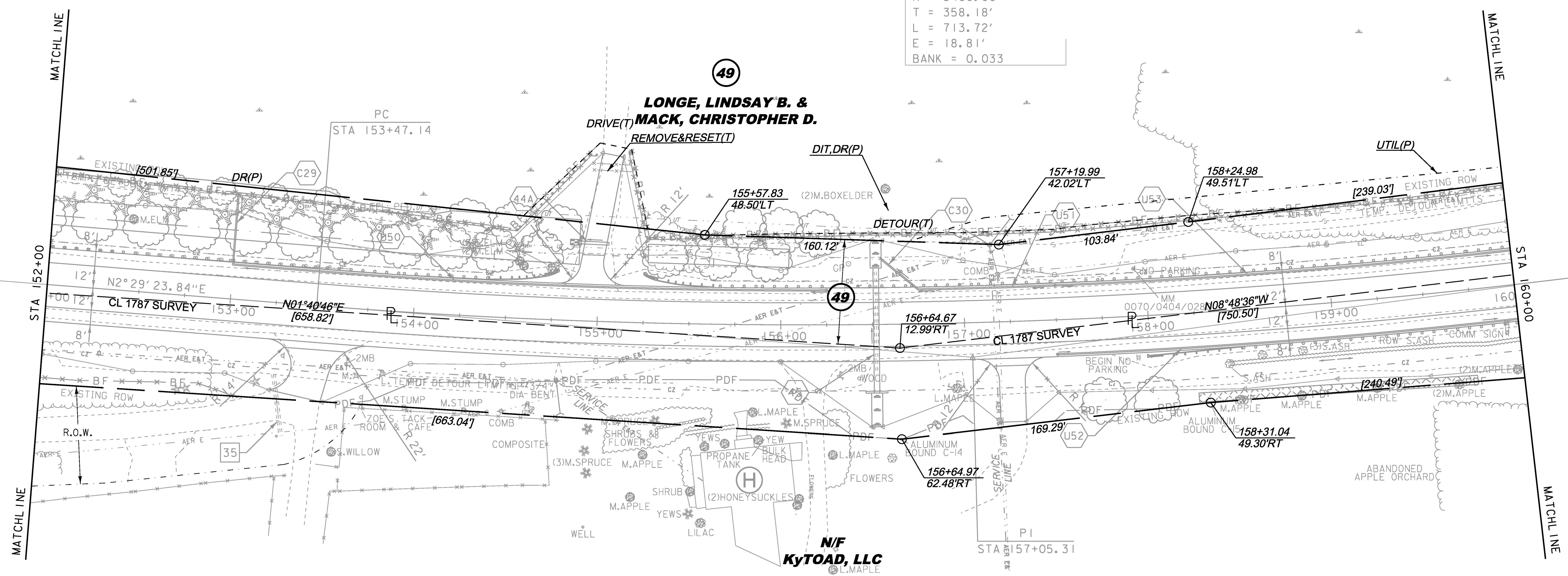
CONSTRUCT GRAVEL DRIVES		
LOCATION/TYPE	RADII STA/OFFSET	APPROX. WIDTH
STA 153+54 RT/(R)	STA 153+21.78/34.00 FT STA 153+77.25/42.00 FT	28 FT
STA 154+91 LT/(F)	STA 154+77.80/32.00 FT STA 155+14.59/32.00 FT	12 FT
STA 157+25 RT/(R)	STA 157+06.20/32.00 FT STA 157+43.85/32.00 FT	14 FT

RELOCATE MAILBOX, MULTIPLE SUPPORT
 STA 153+65 RT (2)
 STA 156+31 RT (2)
STEEL BEAM GUARDRAIL, GALVANIZED
 STA 152+00 - 154+40 LT
 STA 155+63 - 160+00 LT
 STA 158+50 - 160+00 RT
MANUFACTURED TERMINAL SECTION, FLARED
 STA 154+40 - 154+78 LT
 STA 155+25 - 155+63 LT
MANUFACTURED TERMINAL SECTION, TANGENT
 STA 158+00 - 158+50 RT
REMOVAL AND DISPOSAL OF GUARDRAIL
 STA 152+00 - 153+64 LT

REMOVAL AND DISPOSAL OF GUIDE POSTS
 STA 154+07 LT
 STA 156+37 LT
REMOVING AND RESETTING FENCE
 STA 154+93 - 155+17 LT
SPECIAL PROVISION (REMOVE AND RESET COMMERCIAL SIGN)
 STA 153+75 RT
SPECIAL PROVISION (HAND-PLACED BITUMINOUS CONCRETE MATERIAL, DRIVES)
 STA 153+54 RT
 STA 154+91 LT
 STA 157+25 RT



CURVE #11 DATA	
DELTA =	12°01'39" L
D =	1°41'07"
R =	3400.00'
T =	358.18'
L =	713.72'
E =	18.81'
BANK =	0.033



EXISTING DRAINAGE
 35 STA 153+30 RT
 RETAIN EXISTING 24" RCP

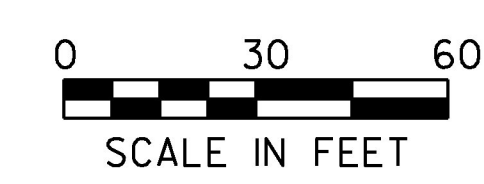
NEW DRAINAGE
 44A STA 154+90 - 155+05 LT
 NEW 18" X 20' CPEP
 POSITION DETERMINED IN FIELD
 W/TYPE I STONE PAD AT OUTLET
 45 STA 156+52 C/L
 NEW 36" X 68' CPEP
 W/CAST IN PLACE STRAIGHT HEADWALL AT INLET
 W/TYPE II STONE PAD AT INLET & OUTLET
 REMOVE EXISTING 24" RCP

8-INCH UNDERDRAIN
 U50 STA 153+00 - 156+25 LT
 NEW 8" X 325' UNDERDRAIN
 W/FLUSHING BASIN AT 156+25 LT
 U51 STA 156+75 - 157+50 LT
 NEW 8" X 175' UNDERDRAIN
 W/FLUSHING BASIN AT 157+50 LT

8-INCH UNDERDRAIN CARRIER PIPE
 U52 STA 157+50 - 160+00 RT
 NEW 8" X 250' UNDERDRAIN
 W/FLUSHING BASIN AT 157+50 RT
 U53 STA 157+50 - 160+00 LT
 NEW 8" X 150' UNDERDRAIN
 W/FLUSHING BASIN AT 157+50 LT

8-INCH UNDERDRAIN CARRIER PIPE
 C29 STA 153+00 LT
 NEW 8" X 40' UD CARRIER PIPE
 C30 STA 156+53 - 156+75 LT
 NEW 8" X 27' UD CARRIER PIPE

THIS PROJECT SUBJECT TO STORMWATER PERMIT 3438-INDS



LINES SHOWN ON THIS PLAN AS EXISTING PROPERTY LINES P/L ARE BELIEVED TO BE ACCURATE BUT SHOULD NOT BE RELIED UPON FOR PURPOSES UNRELATED TO THE STATE OF VERMONT'S ACQUISITION OF LAND AND RIGHTS FOR THIS PROJECT.

PROJECT NAME:	CHARLOTTE
PROJECT NUMBER:	F EGC 019-4(20)
FILE NAME:	r78d062_10y19.dgn
PROJECT LEADER:	K. UPMAL
DESIGNED BY:	B. KIPP
ROW LAYOUT SHEET	19 OF 20
PLOT DATE:	15-MAR-2016
DRAWN BY:	E. PIERCE
CHECKED BY:	E. PIERCE
SHEET	61 OF 499

FOR R.O.W. USE ONLY