

CONSTRUCT GRAVEL DRIVES

LOCATION/TYPE	RADII STA/OFFSET	APPROX. WIDTH
STA 129+90 RT/(R)	STA 129+74.49/32.00 FT STA 130+10.93/32.00 FT	14 FT
STA 132+25 RT/(F)	STA 132+02.81/32.00 FT STA 132+47.19/32.00 FT	20 FT
STA 134+31 RT/(R)	STA 134+09.57/32.00 FT STA 134+47.77/32.00 FT	14 FT

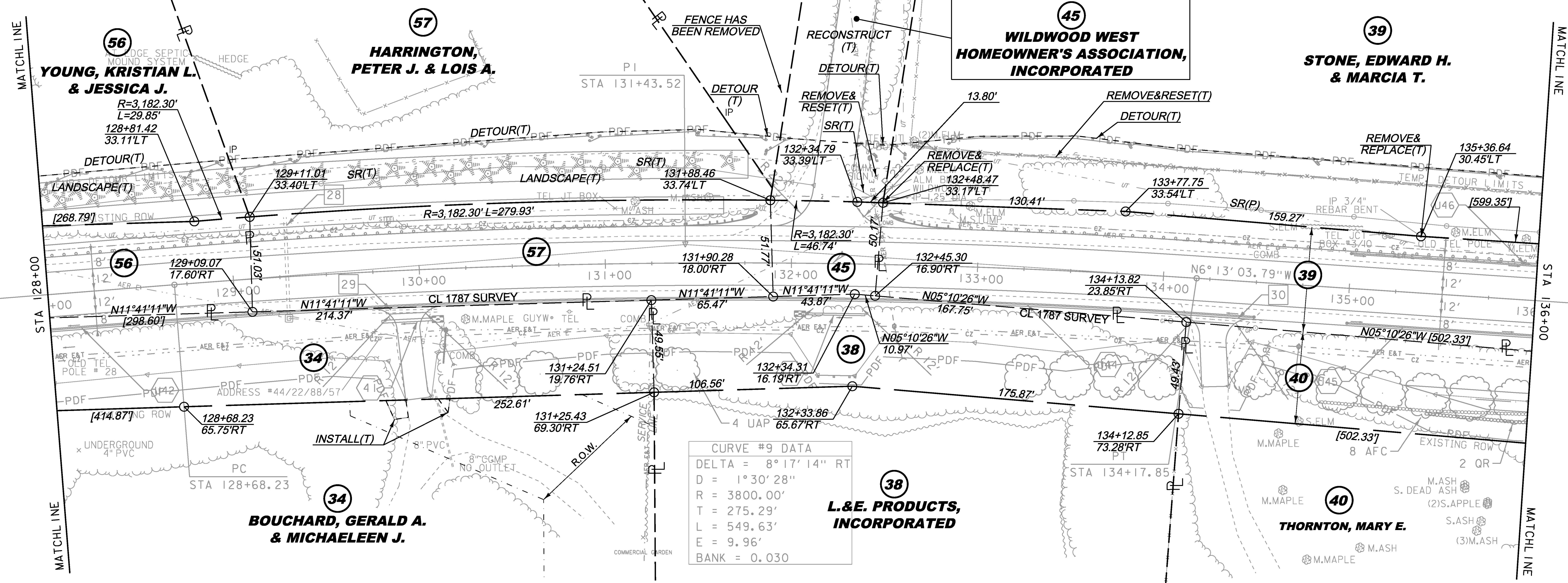
RELOCATE MAILBOX, SINGLE SUPPORT
 STA 134+39 LT
 REMOVING AND RESETTING FENCE
 STA 132+62 - 136+00 LT (IN-USE WOVEN WIRE)
 STEEL BEAM GUARDRAIL, GALVANIZED
 STA 128+00 - 131+44 LT
 STA 132+90 - 136+00 LT
 MANUFACTURED TERMINAL SECTION, FLARED
 STA 131+44 - 131+82 LT
 STA 132+52 - 132+90 LT
 REMOVAL AND DISPOSAL OF GUIDE POSTS
 STA 129+93 LT
 STA 134+05 RT
 STA 134+51 RT
 STA 135+17 LT

SPECIAL PROVISION (HAND-PLACED BITUMINOUS CONCRETE MATERIAL, DRIVES)
 STA 129+90 RT
 STA 132+25 RT
 STA 134+31 RT
 SPECIAL PROVISION (REMOVE AND STOCKPILE STONEWALL)
 STA 134+87 - 136+00 RT

CONSTRUCT PAVED DRIVES

LOCATION/TYPE	RADII STA/OFFSET	APPROX. WIDTH
STA 132+13 LT/(C)	STA 131+89.50/42.00 FT STA 132+53.28/42.00 FT	20 FT

REMOVE & REPLACE PROPERTY MARKERS	
EXISTING	PROPOSED
IP 132+48.51 33.47'LT	IP 132+48.47 33.17'LT
IP 135+36.64 30.45'LT	BND SAME LOCATION



CURVE #9 DATA

DELTA = 8° 17' 14" RT
D = 1° 30' 28"
R = 3800.00'
T = 275.29'
L = 549.63'
E = 9.96'
BANK = 0.030

EXISTING DRAINAGE

28	STA 129+29 C/L REMOVE EXISTING 18" RCP AND DI
29	STA 129+74 - 130+09 RT REMOVE EXISTING 18" CGMP
30	STA 133+96 - 134+55 RT REMOVE EXISTING 15" CGMP

NEW DRAINAGE

41	STA 129+79 - 130+06 RT NEW 18" X 27' CPEP W/STONE PAD AT INLET
41A	STA 132+08 - 132+40 RT NEW 12" X 32' CPEP W/STONE PAD AT OUTLET

8-INCH UNDERDRAIN

U42	STA 128+00 - 129+00 RT NEW 8" X 100' UNDERDRAIN W/FLUSHING BASIN AT 129+00 RT
U44	STA 129+00 - 134+50 RT NEW 8" X 550' UNDERDRAIN W/FLUSHING BASIN AT 134+50 RT
U45	STA 135+00 - 136+00 RT NEW 8" X 100' UNDERDRAIN W/FLUSHING BASIN AT 135+00 RT
U46	STA 135+00 - 136+00 LT NEW 8" X 100' UNDERDRAIN W/FLUSHING BASIN AT 135+00 LT

THIS PROJECT SUBJECT TO STORMWATER PERMIT 3438-INDS

LINES SHOWN ON THIS PLAN AS EXISTING PROPERTY LINES P/L ARE BELIEVED TO BE ACCURATE BUT SHOULD NOT BE RELIED UPON FOR PURPOSES UNRELATED TO THE STATE OF VERMONT'S ACQUISITION OF LAND AND RIGHTS FOR THIS PROJECT.

PROJECT NAME:	CHARLOTTE	FILE NAME:	r78d062_lay16.dgn	PLOT DATE:	15-MAR-2016
PROJECT NUMBER:	F EGC 019-4(20)	PROJECT LEADER:	K. UPMAL	DRAWN BY:	E. PIERCE
		DESIGNED BY:	B. KIPP	CHECKED BY:	E. PIERCE
		ROW LAYOUT SHEET	16 OF 20	SHEET	58 OF 499

FOR R.O.W. USE ONLY