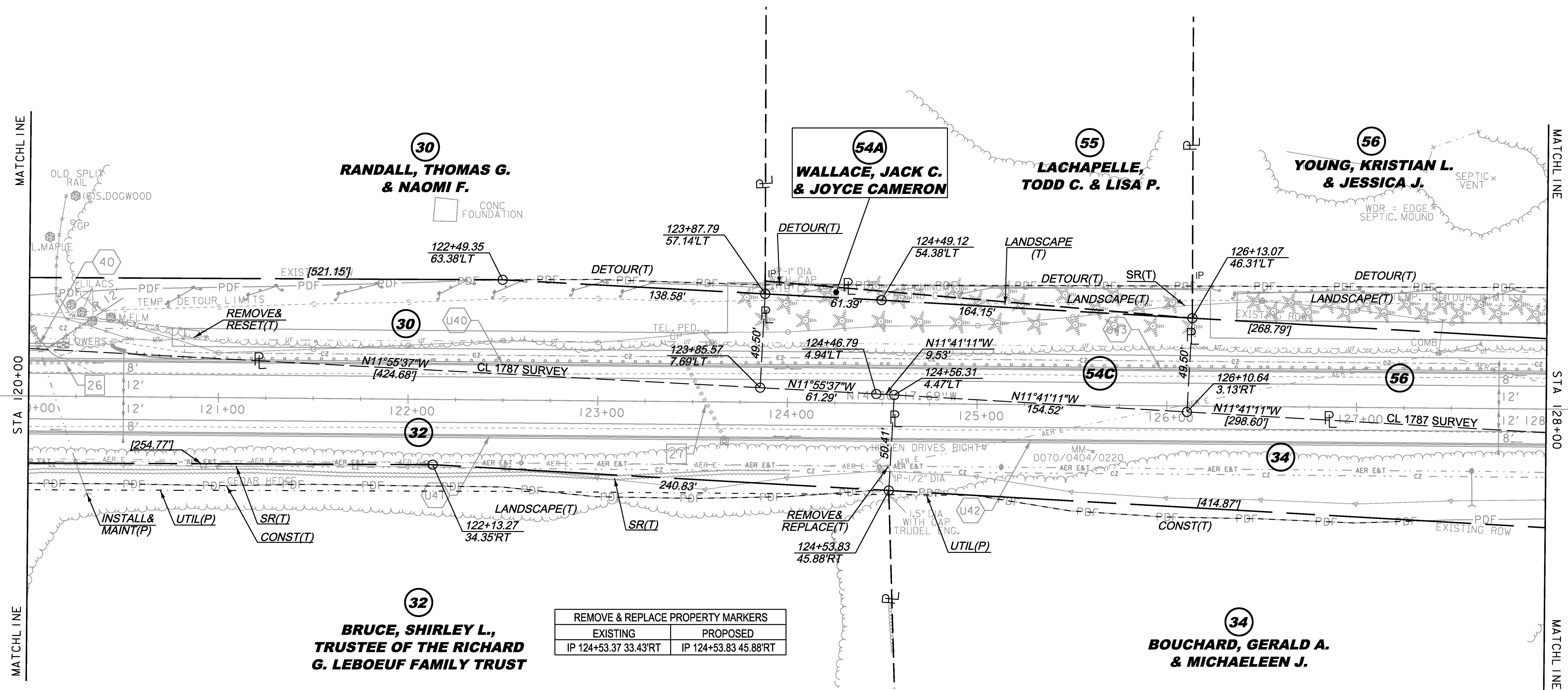
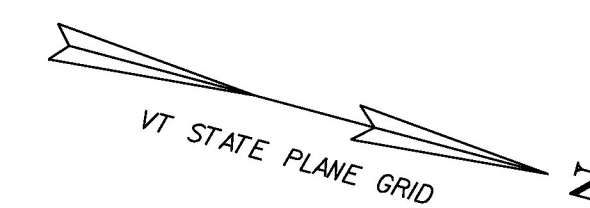


CONSTRUCT GRAVEL DRIVES		
LOCATION/TYPE	RADII STA/OFFSET	APPROX. WIDTH
STA 120+17 LT/(R)	STA 119+79.01/30.00 FT STA 120+19.60/32.00 FT	10 FT

REMOVING AND RESETTING FENCE  
 STA 120+14 - 120+94 LT (ORNAMENTAL WOOD POST & RAIL)  
 STEEL BEAM GUARDRAIL, GALVANIZED  
 STA 120+81 - 128+00 LT  
 MANUFACTURED TERMINAL SECTION, FLARED  
 STA 120+43 - 120+81 LT  
 REMOVAL AND DISPOSAL OF GUIDE POSTS  
 STA 123+60 LT

SPECIAL PROVISION (HAND-PLACED BITUMINOUS CONCRETE MATERIAL, DRIVES)  
 STA 120+17 LT



REMOVE & REPLACE PROPERTY MARKERS	
EXISTING	PROPOSED
IP 124+53.37 33.43°RT	IP 124+53.83 45.88°RT

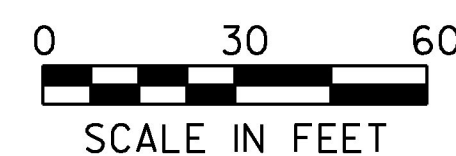
- EXISTING DRAINAGE**
- 26 STA 120+00 - 120+32 LT  
REMOVE EXISTING 15" CGMP
  - 27 STA 123+43 LT - 123+67 RT  
REMOVE EXISTING 18" RCP AND DI

- NEW DRAINAGE**
- 40 STA 120+00 - 120+15 LT  
NEW 18" X 15' CPEP  
W/STONE PAD AT INLET & OUTLET

- 8-INCH UNDERDRAIN**
- 40 STA 120+00 - 124+00 LT  
NEW 8" X 400' UNDERDRAIN  
W/FLUSHING BASIN AT 124+00 LT
  - 41 STA 120+00 - 124+00 RT  
NEW 8" X 400' UNDERDRAIN  
W/FLUSHING BASIN AT 124+00 RT

- 8-INCH UNDERDRAIN**
- 42 STA 124+00 - 128+00 RT  
NEW 8" X 400' UNDERDRAIN  
W/FLUSHING BASIN AT 129+00 RT
  - 43 STA 124+00 - 128+00 LT  
NEW 8" X 400' UNDERDRAIN  
W/FLUSHING BASIN AT 128+00 LT

THIS PROJECT SUBJECT TO STORMWATER PERMIT 3438-INDS



LINES SHOWN ON THIS PLAN AS EXISTING PROPERTY LINES P/L ARE BELIEVED TO BE ACCURATE BUT SHOULD NOT BE RELIED UPON FOR PURPOSES UNRELATED TO THE STATE OF VERMONT'S ACQUISITION OF LAND AND RIGHTS FOR THIS PROJECT.

PROJECT NAME: CHARLOTTE	PLOT DATE: 15-MAR-2016
PROJECT NUMBER: F EGC 019-4(20)	DRAWN BY: E. PIERCE
FILE NAME: r78d062_lay15.dgn	CHECKED BY: B. KIPP
PROJECT LEADER: K. UPMAL	SHEET 57 OF 499
DESIGNED BY: B. KIPP	
ROW LAYOUT SHEET 15 OF 20	

**FOR R.O.W. USE ONLY**