

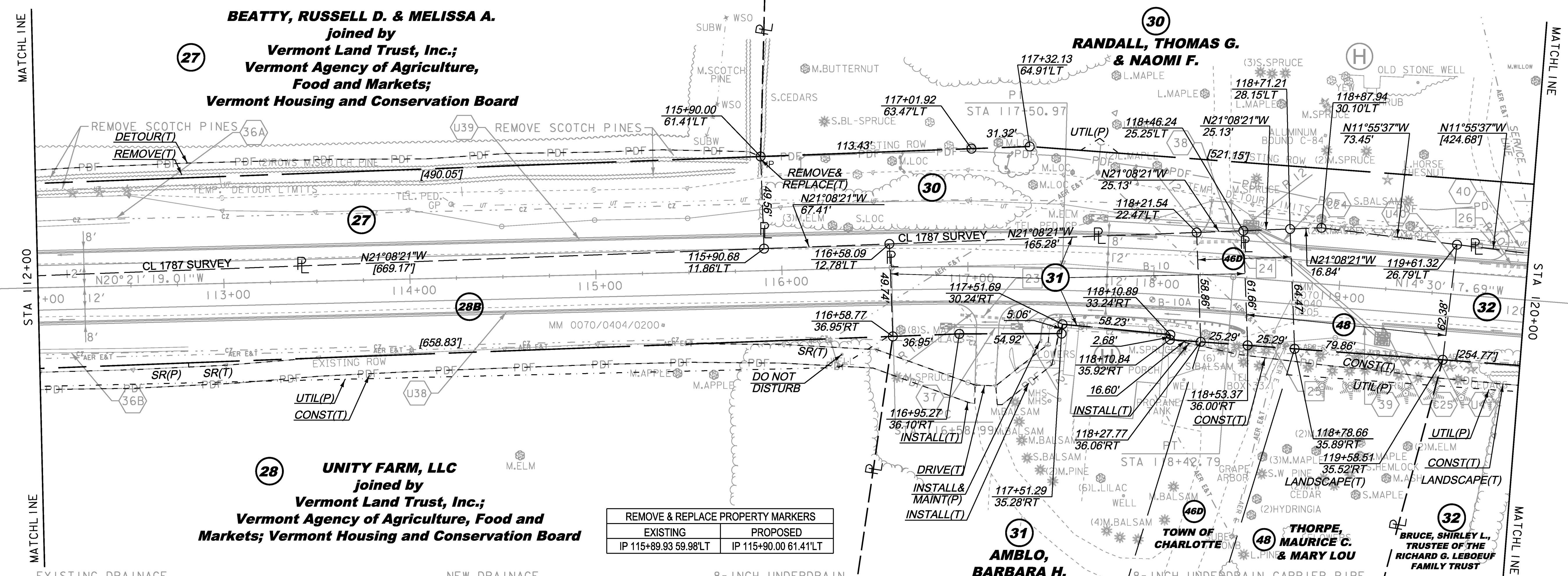
| CONSTRUCT GRAVEL DRIVES | | |
|-------------------------|--|---------------|
| LOCATION/TYPE | RADII STA/OFFSET | APPROX. WIDTH |
| STA 118+33 LT/(R) | STA 118+16.01/42.00 FT STA 118+50.83/42.00 FT | 11 FT |

| CONSTRUCT PAVED DRIVES | | |
|------------------------|--|---------------|
| LOCATION/TYPE | RADII STA/OFFSET | APPROX. WIDTH |
| STA 117+12 RT/(R) | STA 116+92.78/32.00 FT STA 117+29.02/32.00 FT | 11 FT |

| |
|---|
| STEEL BEAM GUARDRAIL, GALVANIZED STA 117+49 - 118+12 RT |
| MANUFACTURED TERMINAL SECTION, FLARED STA 118+12 - 118+50 RT |
| REMOVAL AND DISPOSAL OF GUARDRAIL STA 117+33 - 118+22 RT |
| REMOVAL AND DISPOSAL OF GUIDE POSTS STA 114+23 LT STA 117+72 LT |

| |
|--|
| SPECIAL PROVISION (HAND-PLACED BITUMINOUS CONCRETE MATERIAL, DRIVES) STA 118+33 LT |
|--|

| |
|---|
| SPECIAL PROVISION (STEEL BEAM GUARDRAIL GALVANIZED/ 8 FOOT RADIUS) STA 117+40 - 117+49 RT |
|---|



| REMOVE & REPLACE PROPERTY MARKERS | |
|-----------------------------------|-----------------------|
| EXISTING | PROPOSED |
| IP 115+89.93 59.98'LT | IP 115+90.00 61.41'LT |

| CURVE #8 DATA | |
|---------------|-------------|
| DELTA = | 5°51'01" RT |
| D = | 3°10'59" |
| R = | 1800.00' |
| T = | 91.98' |
| L = | 183.79' |
| E = | 2.35' |
| BANK = | 0.055 |

| EXISTING DRAINAGE | |
|-------------------|--|
| 23 | STA 116+96 - 117+28 RT REMOVE EXISTING 12" CGMP |
| 24 | STA 118+20 - 118+46 LT REMOVE EXISTING 15" CGMP |
| 25 | STA 118+64 RT REMOVE EXISTING DI |
| 26 | STA 119+83 - 120+00 LT REMOVE EXISTING 15" CGMP |

| NEW DRAINAGE | |
|--------------|--|
| 37 | STA 116+91 - 117+24 RT NEW 18" X 32' CPEP W/STONE PAD AT INLET & OUTLET |
| 38 | STA 117+74 - 118+49 LT NEW 30" X 75' CPEP W/ STONE PAD AT OUTLET NEW PRCCB W/TYPE B GRATE (2) |
| 39 | STA 118+88 C/L, ANGLE = 36° NEW 24" X 90' CPEP NEW PRCCB W/TYPE B GRATE (2) |
| 40 | STA 119+75 - 120+00 LT NEW 18" X 25' CPEP W/STONE PAD AT INLET & OUTLET |

| 8-INCH UNDERDRAIN | |
|-------------------|---|
| U38 | STA 112+00 - 118+50 RT NEW 8" X 650' UNDERDRAIN W/FLUSHING BASIN AT 118+50 RT |
| U39 | STA 112+00 - 118+00 LT NEW 8" X 600' UNDERDRAIN W/FLUSHING BASIN AT 118+00 LT |
| U40 | STA 118+75 - 120+00 LT NEW 8" X 125' UNDERDRAIN W/FLUSHING BASIN AT 124+00 LT |
| U41 | STA 119+25 - 120+00 RT NEW 8" X 75' UNDERDRAIN W/FLUSHING BASIN AT 124+00 RT |

| NEW DRAINAGE | |
|--------------|------------------------|
| 36A | STA 112+00 - 112+50 LT |

THIS PROJECT SUBJECT TO STORMWATER PERMIT 3438-INDS

LINES SHOWN ON THIS PLAN AS EXISTING PROPERTY LINES P/L ARE BELIEVED TO BE ACCURATE BUT SHOULD NOT BE RELIED UPON FOR PURPOSES UNRELATED TO THE STATE OF VERMONT'S ACQUISITION OF LAND AND RIGHTS FOR THIS PROJECT.

| | | | | | |
|-----------------|-----------------|---------------------------|-------------------|-------------|-------------|
| PROJECT NAME: | CHARLOTTE | FILE NAME: | r78d062_lay14.dgn | PLOT DATE: | 15-MAR-2016 |
| PROJECT NUMBER: | F EGC 019-4(20) | PROJECT LEADER: | K. UPMAL | DRAWN BY: | E. PIERCE |
| | | DESIGNED BY: | B. KIPP | CHECKED BY: | E. PIERCE |
| | | ROW LAYOUT SHEET 14 OF 20 | | SHEET | 56 OF 499 |

FOR R.O.W. USE ONLY