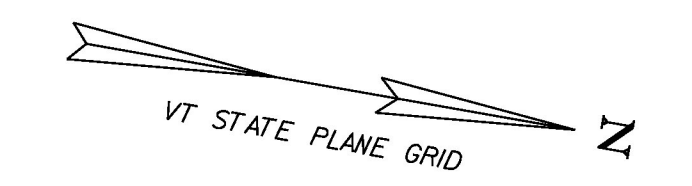


CONSTRUCT GRAVEL DRIVES		
LOCATION/TYPE	RADIUS STA/OFFSET	APPROX. WIDTH
STA 65+81 RT/(C)	STA 65+50.92/40.00 FT STA 66+10.92/40.00 FT	20 FT
STA 66+70 LT/(R)	STA 66+37.99/40.00 FT STA 67+02.00/40.00 FT	24 FT
STA 68+67 RT/(C)	STA 68+37.00/40.00 FT STA 68+97.00/40.00 FT	20 FT

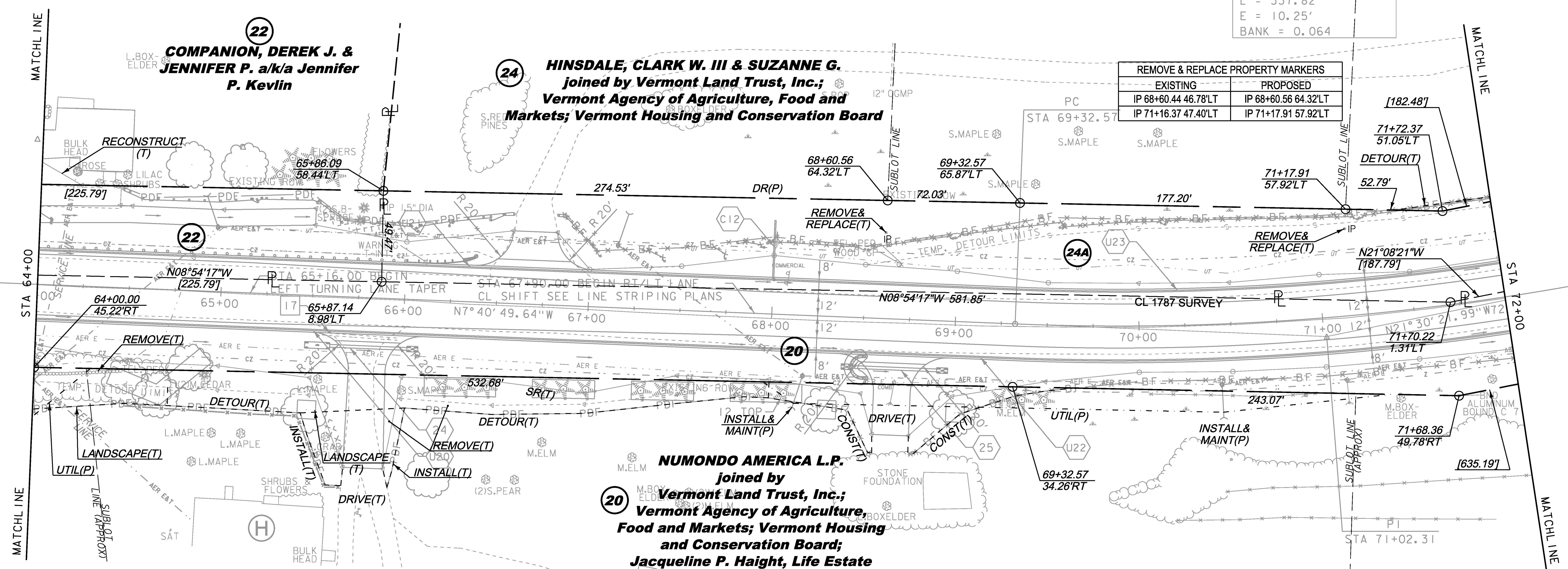
STEEL BEAM GUARDRAIL, GALVANIZED
 STA 64+00 - 66+00 LT
 MANUFACTURED TERMINAL SECTION, FLARED
 STA 66+00 - 66+38 LT
 REMOVAL AND DISPOSAL OF GUIDE POSTS
 STA 68+68 LT

SPECIAL PROVISION (REMOVE AND STOCKPILE STONEWALL)
 STA 64+00 - 64+48 RT
 SPECIAL PROVISION (HAND-PLACED BITUMINOUS CONCRETE MATERIAL, DRIVES)
 STA 65+81 RT
 STA 66+70 LT
 STA 68+67 RT
 SPECIAL PROVISION (FABRIC SCREENING FENCE)
 STA 64+50 - 65+70 RT



Curve #6 DATA	
DELTA	= 13° 49' 32" LT
D	= 4° 05' 33"
R	= 1400.00'
T	= 169.74'
L	= 337.82'
E	= 10.25'
BANK	= 0.064

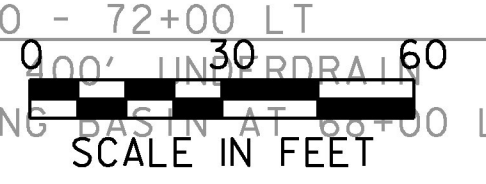
REMOVE & REPLACE PROPERTY MARKERS	
EXISTING	PROPOSED
IP 68+60.44 46.78'LT	IP 68+60.56 64.32'LT
IP 71+16.37 47.40'LT	IP 71+17.91 57.92'LT



EXISTING DRAINAGE		NEW DRAINAGE		8-INCH UNDERDRAIN		8-INCH UNDERDRAIN CARRIER PIPE	
17	STA 65+56 - 65+97 RT REMOVE EXISTING 15" CGMP	24	STA 65+60 - 66+02 RT NEW 18" X 42' CPEP W/STONE PAD AT INLET & OUTLET	U20	STA 64+00 - 68+00 RT NEW 8" X 400' UNDERDRAIN W/FLUSHING BASIN AT 61+50 RT	C12	STA 68+00 LT NEW 8" X 32' UD CARRIER PIPE
		25	STA 68+45 - 68+91 RT NEW 18" X 46' CPEP W/STONE PAD AT INLET & OUTLET	U21	STA 64+00 - 68+00 LT NEW 8" X 400' UNDERDRAIN W/FLUSHING BASIN AT 61+50 LT		
				U22	STA 68+00 - 72+00 RT NEW 6" X 400' UNDERDRAIN W/FLUSHING BASIN AT 68+00 RT		
				U23	STA 68+00 - 72+00 LT NEW 6" X 400' UNDERDRAIN W/FLUSHING BASIN AT 68+00 LT		

THIS PROJECT SUBJECT TO STORMWATER PERMIT 3438-INDS

LINES SHOWN ON THIS PLAN AS EXISTING PROPERTY LINES P/L ARE BELIEVED TO BE ACCURATE BUT SHOULD NOT BE RELIED UPON FOR PURPOSES UNRELATED TO THE STATE OF VERMONT'S ACQUISITION OF LAND AND RIGHTS FOR THIS PROJECT.



FOR R.O.W. USE ONLY

PROJECT NAME:	CHARLOTTE	PLOT DATE:	15-MAR-2016
PROJECT NUMBER:	F EGC 019-4(20)	DRAWN BY:	E. PIERCE
FILE NAME:	r78d062_lay08.dgn	DESIGNED BY:	B. KIPP
PROJECT LEADER:	K. UPMAL	CHECKED BY:	E. PIERCE
ROW LAYOUT SHEET 8 OF 20		SHEET	50 OF 499