

CONSTRUCT GRAVEL DRIVES		
LOCATION/TYPE	RADIUS STA/OFFSET	APPROX. WIDTH
STA 56+10 LT/(R)	STA 55+88.06/32.00 FT STA 56+33.10/32.00 FT	21 FT
STA 60+16 LT/(R)	STA 59+88.92/40.00 FT STA 60+40.92/40.00 FT	12 FT

CONSTRUCT PAVED DRIVES		
LOCATION/TYPE	RADIUS STA/OFFSET	APPROX. WIDTH
STA 56+50 RT/(C)	STA 56+06.78/28.50 FT STA 56+74.52/28.50 FT	30 FT
STA 58+00 RT/(C)	STA 57+73.87/28.50 FT STA 58+41.20/50.00 FT	30 FT
STA 63+09 LT/(C)	STA 62+76.05/45.00 FT STA 63+50.00/45.00 FT	24 FT

RELOCATE MAILBOX, SINGLE SUPPORT  
STA 56+30 RT  
STA 63+29 LT

RELOCATE MAILBOX, MULTIPLE SUPPORT  
STA 60+90 RT (3)

STEEL BEAM GUARDRAIL, GALVANIZED  
STA 63+75 - 64+00 LT

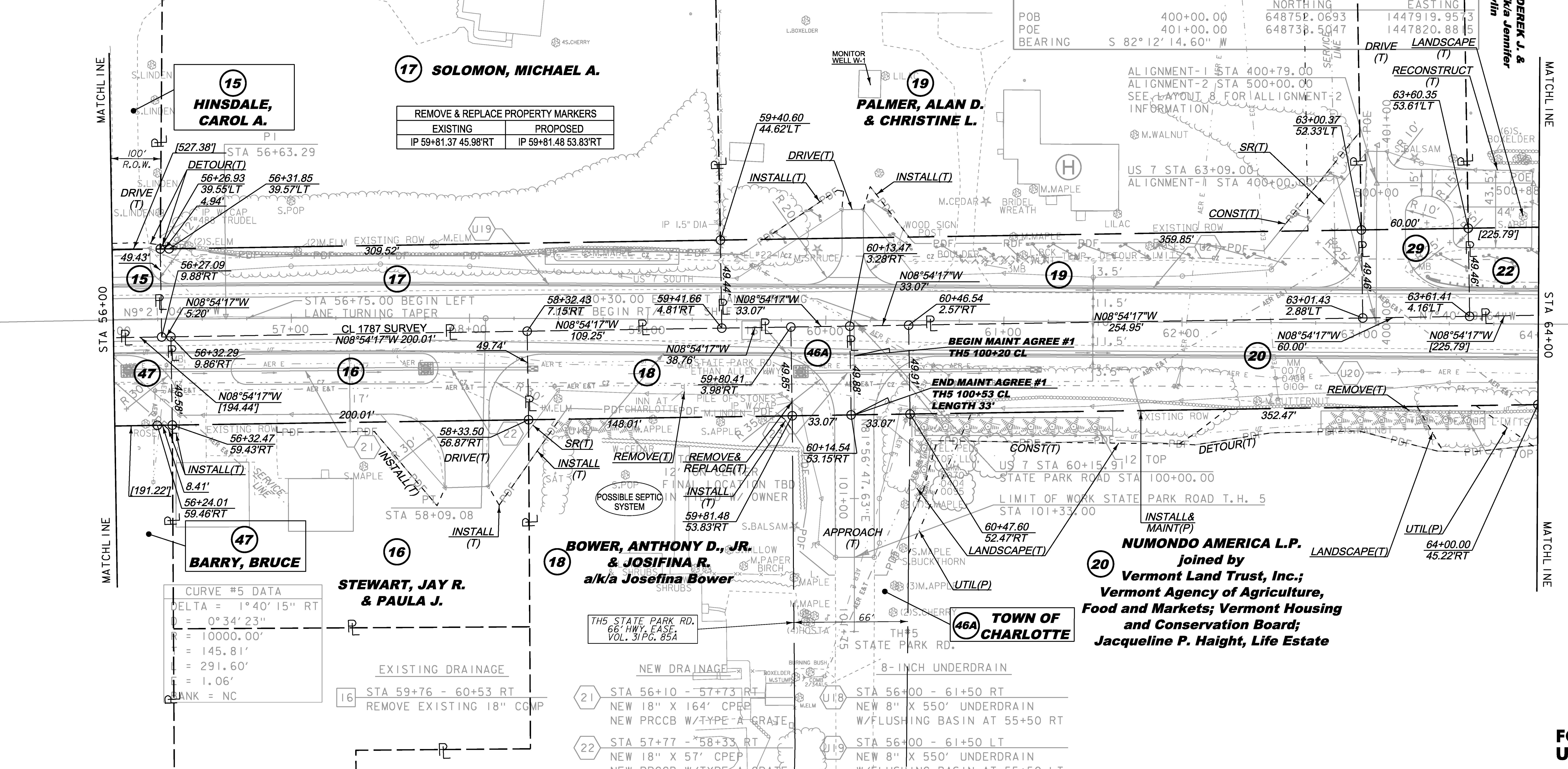
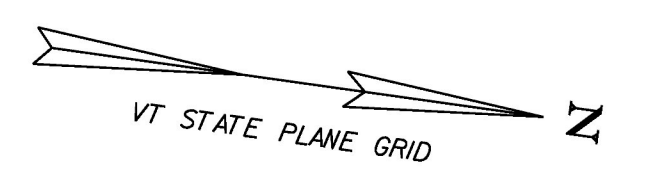
MANUFACTURED TERMINAL SECTION, FLARED  
STA 63+37 - 63+75 LT

REMOVAL OF EXISTING TRAFFIC CONTROL SIGNAL SYSTEM  
STA 60+16

SPECIAL PROVISION (REMOVE AND STOCKPILE STONEWALL)  
STA 60+79 - 64+00 RT

SPECIAL PROVISION (HAND-PLACED BITUMINOUS CONCRETE MATERIAL, DRIVES)  
STA 56+10 LT  
STA 60+16 LT

MATCH LINE AA  
SEE SHEET 34 FOR INSET



REMOVE & REPLACE PROPERTY MARKERS	
EXISTING	PROPOSED
IP 59+81.37 45.98 RT	IP 59+81.48 53.83 RT

CURVE #5 DATA	
DELTA =	1° 40' 15" RT
D =	0° 34' 23"
R =	10000.00'
L =	145.81'
T =	291.60'
E =	1.06'
CHANK =	NC

- 21 STA 56+10 - 57+73 RT  
NEW 18" X 164' CPEP  
NEW PRCCB W/TYPE A GRATE
- 22 STA 57+77 - 58+33 RT  
NEW 18" X 57' CPEP  
NEW PRCCB W/TYPE A GRATE  
W/STONE PAD AT OUTLET
- 23 STA 59+88 - 61+15 RT  
NEW 18" X 128' CPEP  
NEW PRCCB W/TYPE B GRATE  
W/STONE PAD AT OUTLET
- 46A STA 56+00 - 61+50 RT  
NEW 8" X 550' UNDERDRAIN  
W/FLUSHING BASIN AT 55+50 RT
- 46A STA 56+00 - 61+50 LT  
NEW 8" X 550' UNDERDRAIN  
W/FLUSHING BASIN AT 55+50 LT
- 46A STA 61+50 - 64+00 RT  
NEW 8" X 550' UNDERDRAIN  
W/FLUSHING BASIN AT 61+50 RT
- 46A STA 61+50 - 64+00 LT  
NEW 8" X 250' UNDERDRAIN  
W/FLUSHING BASIN AT 61+50 LT

LINES SHOWN ON THIS PLAN AS EXISTING PROPERTY LINES P/L ARE BELIEVED TO BE ACCURATE BUT SHOULD NOT BE RELIED UPON FOR PURPOSES UNRELATED TO THE STATE OF VERMONT'S ACQUISITION OF LAND AND RIGHTS FOR THIS PROJECT.

PROJECT NAME:	CHARLOTTE	PLOT DATE:	15-MAR-2016
PROJECT NUMBER:	F EGC 019-4(20)	DESIGNED BY:	B. KIPP
FILE NAME:	r78d062_lay07.dgn	CHECKED BY:	E. PIERCE
PROJECT LEADER:	K. UPMAL	ROW LAYOUT SHEET	7 OF 20
DESIGNED BY:	B. KIPP	SHEET	49 OF 499

THIS PROJECT SUBJECT TO STORMWATER PERMIT 3438-INDS

FOR R.O.W. USE ONLY