

CONSTRUCT GRAVEL DRIVES		
LOCATION/TYPE	RADII STA/OFFSET	APPROX. WIDTH
STA 49+17 RT/ (R)	STA 48+99.00/32.00 FT STA 49+36.00/32.00 FT	13 FT
STA 49+66 LT/ (R)	STA 49+38.35/32.00 FT STA 49+94.70/32.00 FT	32 FT
STA 55+06 RT/ (R)	STA 54+84.93/32.00 FT STA 55+25.02/32.00 FT	16 FT

RELOCATE MAILBOX, SINGLE SUPPORT  
 STA 49+33 RT  
 STA 55+25 RT

RELOCATE MAILBOX, MULTIPLE SUPPORT  
 STA 55+98 LT (8)

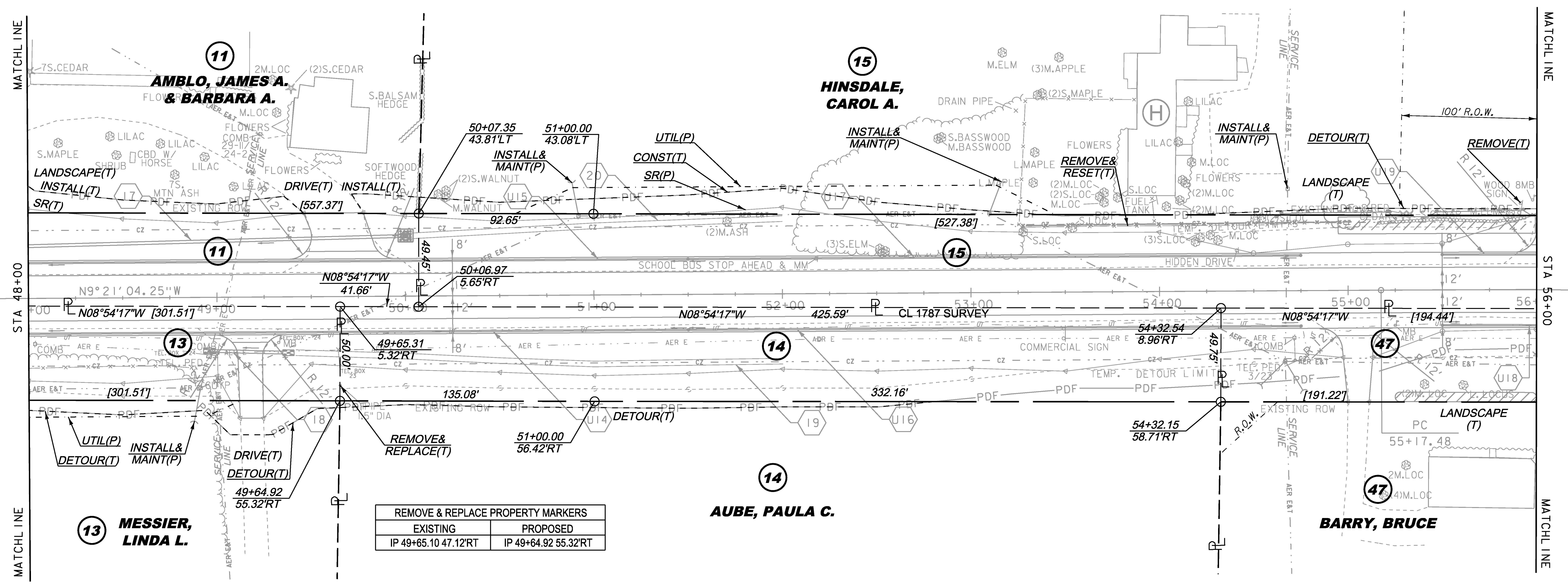
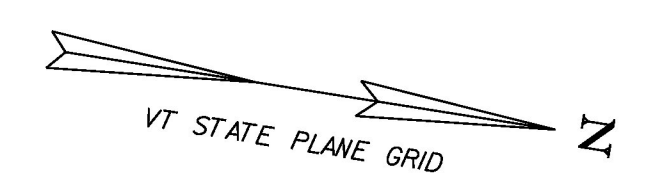
REMOVAL OF EXISTING FENCE  
 STA 48+00 - 48+90 RT (ABANDONED BARBED WIRE)  
 STA 53+26 - 55+02 LT (WOOD STOCKADE FENCE)

SPECIAL PROVISION (REMOVE AND STOCKPILE STONE WALL)  
 STA 55+16 - 55+95 LT

SPECIAL PROVISION (HAND-PLACED BITUMINOUS CONCRETE MATERIAL, DRIVES)  
 STA 49+17 RT  
 STA 49+66 LT  
 STA 55+06 RT

SPECIAL PROVISION (PRESSURE TREATED BOARD FENCE)  
 STA 53+26 - 55+02 LT

SPECIAL PROVISION (REMOVE COMMERCIAL SIGN)  
 STA 55+91 LT



REMOVE & REPLACE PROPERTY MARKERS	
EXISTING	PROPOSED
IP 49+65.10 47.12 RT	IP 49+64.92 55.32 RT

NEW DRAINAGE

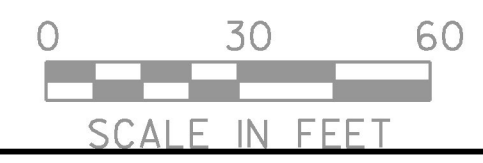
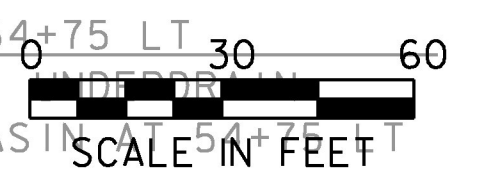
- 17 STA 48+00 - 49+99 LT  
NEW 18" X 200' CPEP  
NEW PRCCB W/TYPE B GRATE (2)
- 18 STA 48+99 - 49+35 RT  
NEW 18" X 36' CPEP  
W/STONE PAD AT INLET & OUTLET
- 19 STA 49+41 - 52+00 RT  
CONSTRUCT GRASS LINED TREATMENT SWALE  
SEE GRASS LINED TREATMENT SWALE DETAILS
- 20 STA 50+00 - 52+00 LT  
CONSTRUCT GRASS LINED TREATMENT SWALE  
SEE GRASS LINED TREATMENT SWALE DETAILS

8-INCH UNDERDRAIN

- U14 STA 48+00 - 51+50 RT  
NEW 8" X 350' UNDERDRAIN  
W/FLUSHING BASIN AT 51+50 RT
- U15 STA 48+00 - 51+50 LT  
NEW 8" X 350' UNDERDRAIN  
W/FLUSHING BASIN AT 51+50 LT
- U16 STA 51+50 - 54+75 RT  
NEW 8" X 325' UNDERDRAIN  
W/FLUSHING BASIN AT 54+75 RT
- U17 STA 51+50 - 54+75 LT  
NEW 8" X 325' UNDERDRAIN  
W/FLUSHING BASIN AT 54+75 LT
- U18 STA 55+50 - 56+00 RT  
NEW 8" X 50' UNDERDRAIN  
W/FLUSHING BASIN AT 55+50 RT
- U19 STA 55+50 - 56+00 LT  
NEW 8" X 50' UNDERDRAIN  
W/FLUSHING BASIN AT 55+50 LT

LINES SHOWN ON THIS PLAN AS EXISTING PROPERTY LINES P/L ARE BELIEVED TO BE ACCURATE BUT SHOULD NOT BE RELIED UPON FOR PURPOSES UNRELATED TO THE STATE OF VERMONT'S ACQUISITION OF LAND AND RIGHTS FOR THIS PROJECT.

THIS PROJECT SUBJECT TO STORMWATER PERMIT 3438-INDS



**FOR R.O.W. USE ONLY**

PROJECT NAME: CHARLOTTE	PLOT DATE: 15-MAR-2016
PROJECT NUMBER: F EGC 019-4(20)	DRAWN BY: E. PIERCE
FILE NAME: r78d062_lay06.dgn	CHECKED BY: E. PIERCE
PROJECT LEADER: K. UPMAL	DESIGNED BY: B. KIPP
ROW LAYOUT SHEET 6 OF 20	SHEET 48 OF 499