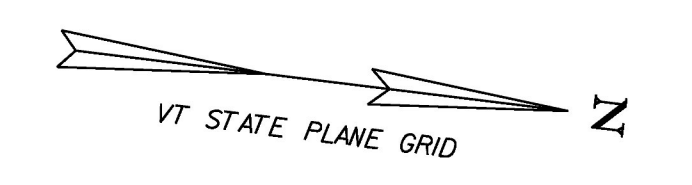


LOCATION/TYPE	RADIUS STA/OFFSET	APPROX. WIDTH
STA 35+95 RT/(R)	STA 35+74.25/32.00 FT STA 36+16.97/32.00 FT	19 FT
STA 36+00 LT/(R)	STA 35+85.11/32.00 FT STA 36+27.16/32.00 FT	15 FT
STA 36+70 LT/(R)	STA 36+51.94/32.00 FT STA 36+88.05/32.00 FT	12 FT
STA 38+10 RT/(R)	STA 37+70.40/32.00 FT STA 38+16.00/32.00 FT	16 FT

RELOCATE MAILBOX, SINGLE SUPPORT
 STA 36+17 RT
 WOVEN WIRE FENCE WITH WOOD POSTS
 STA 34+97 - 36+07 LT
 STA 37+79 - 40+00 LT
 REMOVING AND RESETTING FENCE
 STA 32+00 - 34+97 LT (IN-USE ELECTRIC W/METAL POSTS)
 STA 32+71 - 33+79 RT (CHAIN-LINK)
 STA 36+21 - 36+58 LT (ORNAMENTAL WOOD PLANK)
 STA 36+78 - 37+68 LT (ORNAMENTAL WOOD PLANK)
 REMOVAL OF EXISTING FENCE
 STA 32+00 - 35+89 LT (WOVEN & BARBED WIRE W/WOOD POSTS)
 STA 35+89 - 36+06 LT (IN-USE WOOD PLANK)
 STA 34+97 - 35+92 LT (WOVEN WIRE FENCE W/WOOD POSTS)
 STA 32+00 - 32+68 RT (ABANDONED BARBED WIRE)
 STA 37+79 - 40+00 LT (IN-USE WOVEN WIRE W/WOOD POSTS)
 STEEL BEAM GUARDRAIL, GALVANIZED
 STA 38+40 - 40+00 LT
 MANUFACTURED TERMINAL SECTION, FLARED
 STA 38+02 - 38+40 LT

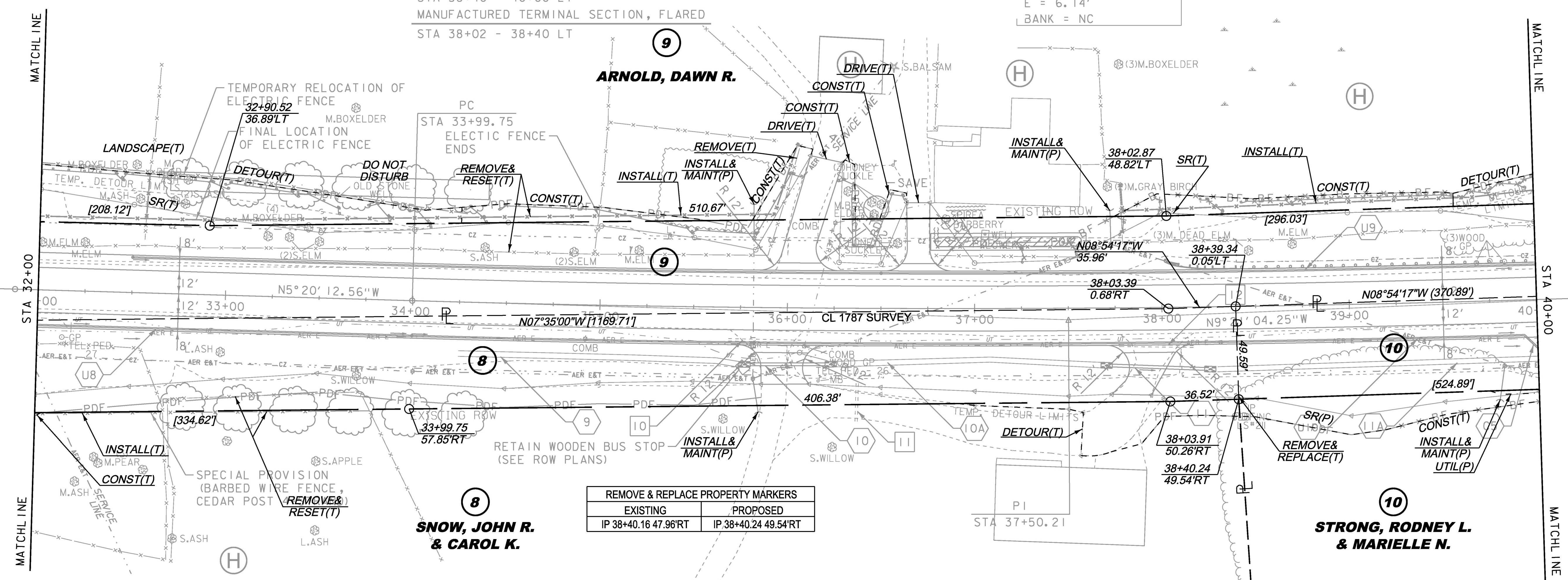
REMOVAL AND DISPOSAL OF GUIDE POSTS
 STA 32+13 RT
 STA 36+07 RT
 STA 39+68 LT
 STA 39+76 LT
 STA 39+83 LT
 SPECIAL PROVISION (HAND-PLACED BITUMINOUS CONCRETE MATERIAL, DRIVES)
 STA 35+95 RT
 STA 36+00 LT
 STA 36+70 LT
 STA 38+10 RT

SPECIAL PROVISION (BARBED WIRE FENCE, CEDAR POST 4-STRAND)
 STA 32+00 - 33+79 RT



CURVE #4 DATA

DELTA =	4°00'52" LT
D =	0°34'23"
R =	10000.00'
T =	350.46'
L =	700.64'
E =	6.14'
BANK =	NC



REMOVE & REPLACE PROPERTY MARKERS	
EXISTING	PROPOSED
IP 38+40.16 47.96°RT	IP 38+40.24 49.54°RT

- | | | | |
|---|--|---|--|
| <p>EXISTING DRAINAGE</p> <ul style="list-style-type: none"> 10 STA 35+69 - 36+09 RT REMOVE EXISTING 15" CGMP 11 STA 36+38 RT RETAIN EXISTING 15" CGMP 12 STA 37+76 - 38+16 RT REMOVE EXISTING 12" CGMP | <p>NEW DRAINAGE</p> <ul style="list-style-type: none"> 9 STA 34+25 - 35+75 RT CONSTRUCT GRASS LINED TREATMENT SWALE SEE GRASS LINED TREATMENT SWALE DETAILS 10 STA 35+81 - 36+20 RT NEW 18" X 40' CPEP W/STONE PAD AT INLET & OUTLET 10A STA 36+26 - 37+67 RT CONSTRUCT GRASS LINED TREATMENT SWALE SEE GRASS LINED TREATMENT SWALE DETAILS | <p>8-INCH UNDERDRAIN</p> <ul style="list-style-type: none"> 11 STA 37+73 - 38+22 RT NEW 18" X 50' CPEP W/STONE PAD AT INLET & OUTLET 11A STA 38+28 - 40+00 RT CONSTRUCT GRASS LINED TREATMENT SWALE SEE GRASS LINED TREATMENT SWALE DETAILS | <p>8-INCH UNDERDRAIN CARRIER PIPE</p> <ul style="list-style-type: none"> U8 STA 32+00 - 34+00 RT NEW 8" X 200' UNDERDRAIN W/FLUSHING BASIN AT 28+30 RT U9 STA 32+50 - 40+00 LT NEW 8" X 750' UNDERDRAIN W/FLUSHING BASIN AT 32+50 & 36+50 LT U10 STA 34+00 - 39+93 RT NEW 8" X 595' UNDERDRAIN W/FLUSHING BASIN AT 34+00 RT |
|---|--|---|--|

THIS PROJECT SUBJECT TO STORMWATER PERMIT 3438-INDS



LINES SHOWN ON THIS PLAN AS EXISTING PROPERTY LINES P/L ARE BELIEVED TO BE ACCURATE BUT SHOULD NOT BE RELIED UPON FOR PURPOSES UNRELATED TO THE STATE OF VERMONT'S ACQUISITION OF LAND AND RIGHTS FOR THIS PROJECT.

PROJECT NAME: CHARLOTTE	PLOT DATE: 15-MAR-2016
PROJECT NUMBER: F EGC 019-4(20)	DRAWN BY: E. PIERCE
FILE NAME: r78d062_lay04.dgn	CHECKED BY: E. PIERCE
PROJECT LEADER: K. UPMAL	DESIGNED BY: B. KIPP
ROW LAYOUT SHEET 4 OF 20	SHEET 46 OF 499

FOR R.O.W. USE ONLY