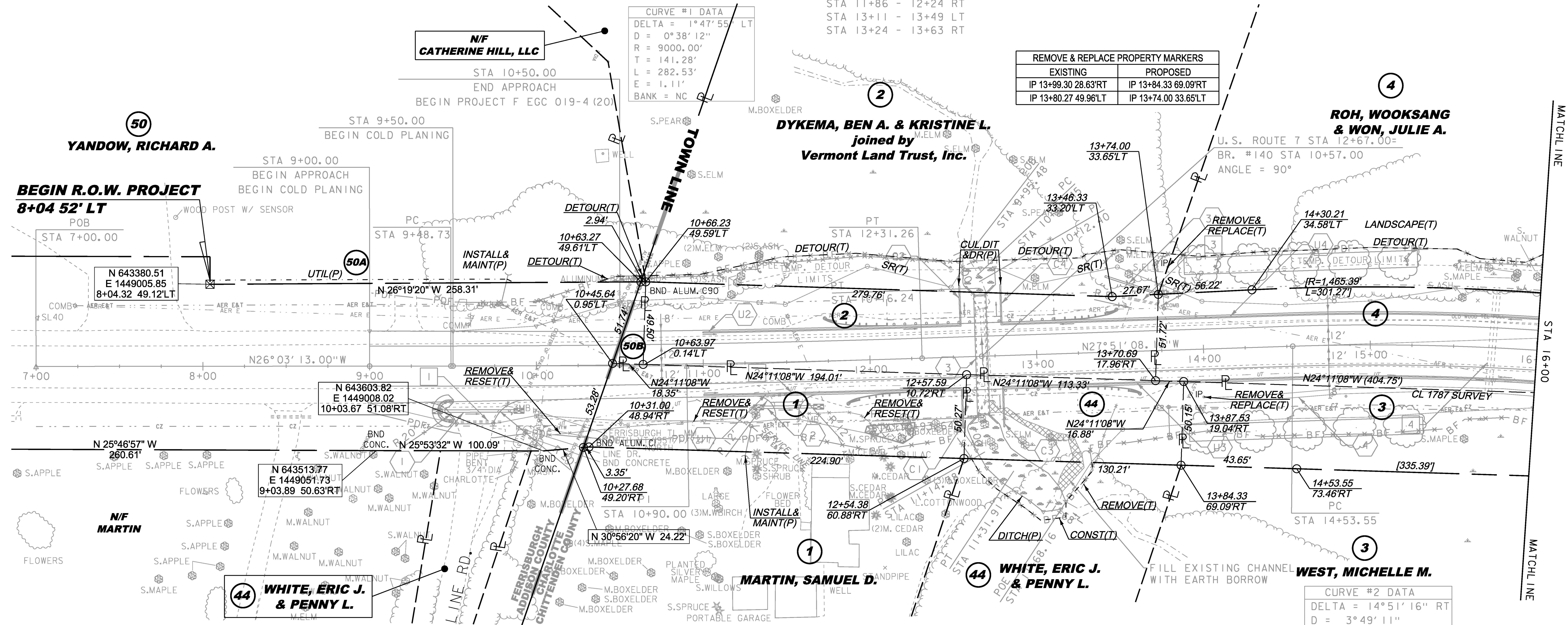
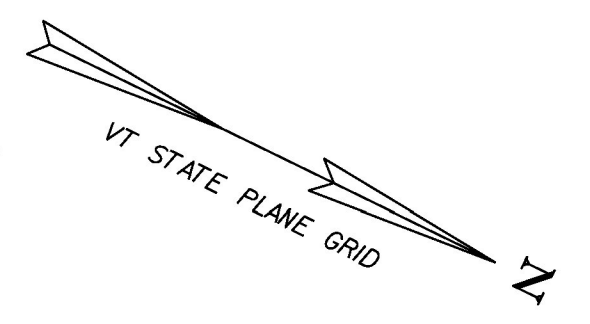


| CONSTRUCT GRAVEL DRIVES |  |               |
|-------------------------|--|---------------|
| LOCATION/TYPE           | RADIUS STA/OFFSET                        | APPROX. WIDTH |
| STA 9+63 RT/(R)         | STA 9+32.64/40 FT<br>STA 9+93.08/39 FT   | 23 FT         |
| STA 11+50 RT/(R)        | STA 11+30.77/32 FT<br>STA 11+68.23/32 FT | 14 FT         |
| STA 13+66 LT/(F)        | STA 13+50.14/28 FT<br>STA 13+86.00/32 FT | 16 FT         |

RELOCATE MAILBOX, SINGLE SUPPORT  
STA 11+56 RT  
RELOCATE MAILBOX, MULTIPLE SUPPORT  
STA 9+82 RT (3)  
REMOVING AND RESETTING FENCE  
STA 10+06 - 11+25 RT (WOOD PICKET FENCE)  
STA 11+61 - 12+02 RT (WOOD PICKET FENCE)  
REMOVAL OF EXISTING FENCE  
STA 13+20 - 13+47 RT (ABANDONED BARBED WIRE)

STEEL BEAM GUARDRAIL, GALVANIZED  
STA 12+11 - 12+24 LT  
STA 13+11 - 13+24 RT  
STEEL BEAM GUARDRAIL, GALVANIZED/NESTED  
STA 12+24 - 13+11 RT  
STA 12+24 - 13+11 LT  
MANUFACTURED TERMINAL SECTION, FLARED  
STA 11+73 - 12+11 LT  
STA 11+86 - 12+24 RT  
STA 13+11 - 13+49 LT  
STA 13+24 - 13+63 RT

EARTH BORROW  
STA 10+84 - 11+67 LT  
SPECIAL PROVISION (HAND-PLACED BITUMINOUS CONCRETE MATERIAL, DRIVES)  
STA 9+63 RT  
STA 11+50 RT  
STA 13+66 LT



| EXISTING DRAINAGE |  |
|-------------------|--|
| 1                 | STA 9+47 - 9+79 RT<br>REMOVE EXISTING 15" CPEP   |
| 2                 | STA 11+37 - 11+62 RT<br>REMOVE EXISTING 18" CPEP |
| 3                 | STA 13+52 - 13+76 LT<br>REMOVE EXISTING 15" CPEP |
| 4                 | STA 15+73 C/L<br>REMOVE CATTLE PASS 48" CMP      |

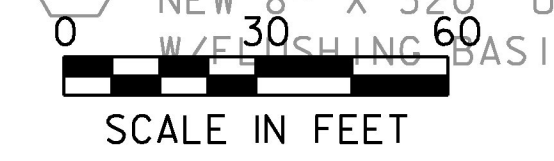
| NEW DRAINAGE |   |
|--------------|---|
| 1            | STA 9+44 - 9+87 RT<br>NEW 18" X 42' CPEP<br>W/STONE PAD AT INLET & OUTLET |

| NEW DRAINAGE |   |
|--------------|---|
| 2            | STA 11+36 - 11+66 RT<br>NEW 18" X 30' CPEP<br>W/STONE PAD AT INLET & OUTLET   |
| 3            | STA 12+67 BR #140 ANGLE = 90°<br>NEW 6' X 3' X 72' PRECAST CONCRETE BOX<br>W/ PRECAST HEADWALLS & WINGWALLS<br>STONE FILL TYPE II AT INLET & OUTLET<br>SEE BRIDGE DETAIL SHEETS |
| 3A           | STA 13+42 - 13+80 LT<br>NEW 12" X 40' CPEP  |
| 4            | STA 14+00 - 16+00 RT<br>CONSTRUCT GRASS LINED TREATMENT SWALE<br>SEE GRASS LINED TREATMENT SWALE DETAILS  |

| 8-INCH UNDERDRAIN |  |
|-------------------|--|
| U1                | STA 11+00 - 12+55 RT<br>NEW 8" X 155' UNDERDRAIN<br>W/FLUSHING BASIN AT 11+00 RT |
| U2                | STA 11+00 - 12+55 LT<br>NEW 8" X 155' UNDERDRAIN<br>W/FLUSHING BASIN AT 11+00 LT |
| U3                | STA 12+80 - 16+00 RT<br>NEW 8" X 320' UNDERDRAIN<br>W/FLUSHING BASIN AT 18+50 RT |
| U4                | STA 12+80 - 16+00 LT<br>NEW 8" X 320' UNDERDRAIN<br>W/FLUSHING BASIN AT 18+50 LT |

| 8-INCH UNDERDRAIN CARRIER PIPE |  |
|--------------------------------|--|
| C1                             | STA 12+55 RT<br>NEW 8" X 24' UD CARRIER PIPE |
| C2                             | STA 12+55 LT<br>NEW 8" X 24' UD CARRIER PIPE |
| C3                             | STA 12+80 RT<br>NEW 8" X 24' UD CARRIER PIPE |
| C4                             | STA 12+80 LT<br>NEW 8" X 24' UD CARRIER PIPE |

| CURVE #2 DATA |                |
|---------------|----------------|
| DELTA         | = 14°51'16" RT |
| D             | = 3°49'11"     |
| R             | = 1500.00'     |
| T             | = 195.54'      |
| L             | = 388.89'      |
| E             | = 12.69'       |
| BANK          | = 0.062        |



THIS PROJECT SUBJECT TO STORMWATER PERMIT 3438-INDS

LINES SHOWN ON THIS PLAN AS EXISTING PROPERTY LINES P/L ARE BELIEVED TO BE ACCURATE BUT SHOULD NOT BE RELIED UPON FOR PURPOSES UNRELATED TO THE STATE OF VERMONT'S ACQUISITION OF LAND AND RIGHTS FOR THIS PROJECT.

|                 |                   |                  |             |
|-----------------|-------------------|------------------|-------------|
| PROJECT NAME:   | CHARLOTTE         | PLOT DATE:       | 15-MAR-2016 |
| PROJECT NUMBER: | F EGC 019-4(20)   | DRAWN BY:        | E. PIERCE   |
| FILE NAME:      | r78d062_lay01.dgn | CHECKED BY:      | B. KIPP     |
| PROJECT LEADER: | K. UPMAL          | ROW LAYOUT SHEET | 10F 20      |
| DESIGNED BY:    | B. KIPP           | SHEET            | 43 OF 499   |

**FOR R.O.W. USE ONLY**