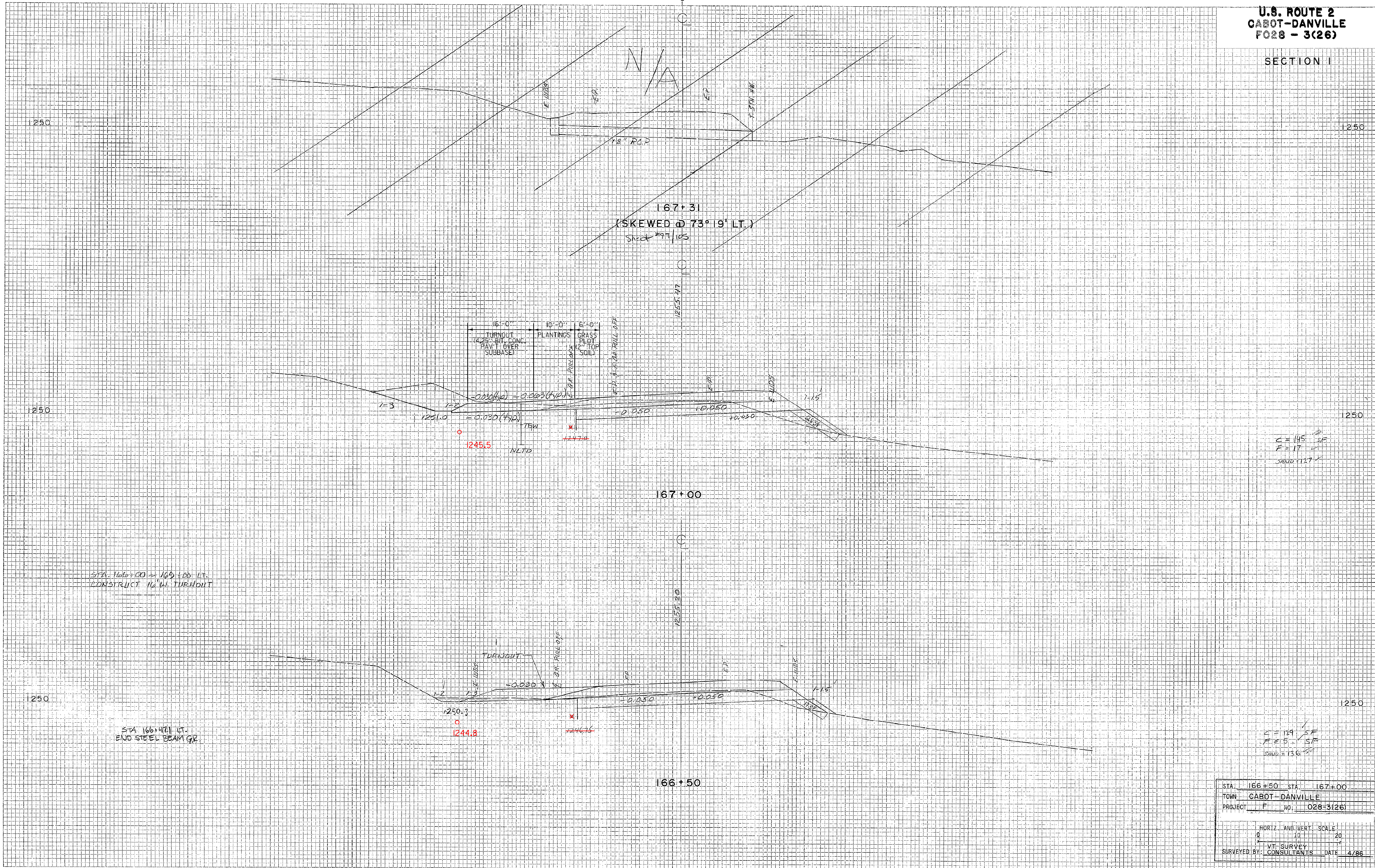


U.S. ROUTE 2  
CABOT-DANVILLE  
F028 - 3(26)

SECTION 1

DATE	
BY	
SURVEYED	
TEMPLATE	
NOTE BOOK	
NO.	

DATE	11/16
BY	BRADY
SURVEYED	
TEMPLATE	
NOTE BOOK	
NO.	



C = 145 SF  
E = 17 SF  
SAND = 127 SF

C = 129 SF  
E = 15 SF  
SAND = 136 SF

STA.	166+50	STA.	167+00
TOWN	CABOT-DANVILLE		
PROJECT	F	NO.	028-3(26)
HORIZ. AND VERT. SCALE			
0 10 20			
1" = 20'			
SURVEYED BY: CONSULTANTS			
DATE: 4/86			

PLATE 3 CROSS SECTION OF R.R. & R.S. STANDARD  
SHEET 0 IN CORPORATION

PROJECT NAME:	CABOT-DANVILLE	PLOT DATE:	06-OCT-2010
PROJECT NUMBER:	FEGC F 028-3(26) C/1	DRAWN BY:	I. SHEA
FILE NAME:	78d058xs.dgn	CHECKED BY:	S. MENARD
DESIGNED BY:	I. SHEA	SHEET	182 OF 250
MAINLINE CROSS SECTIONS	50		