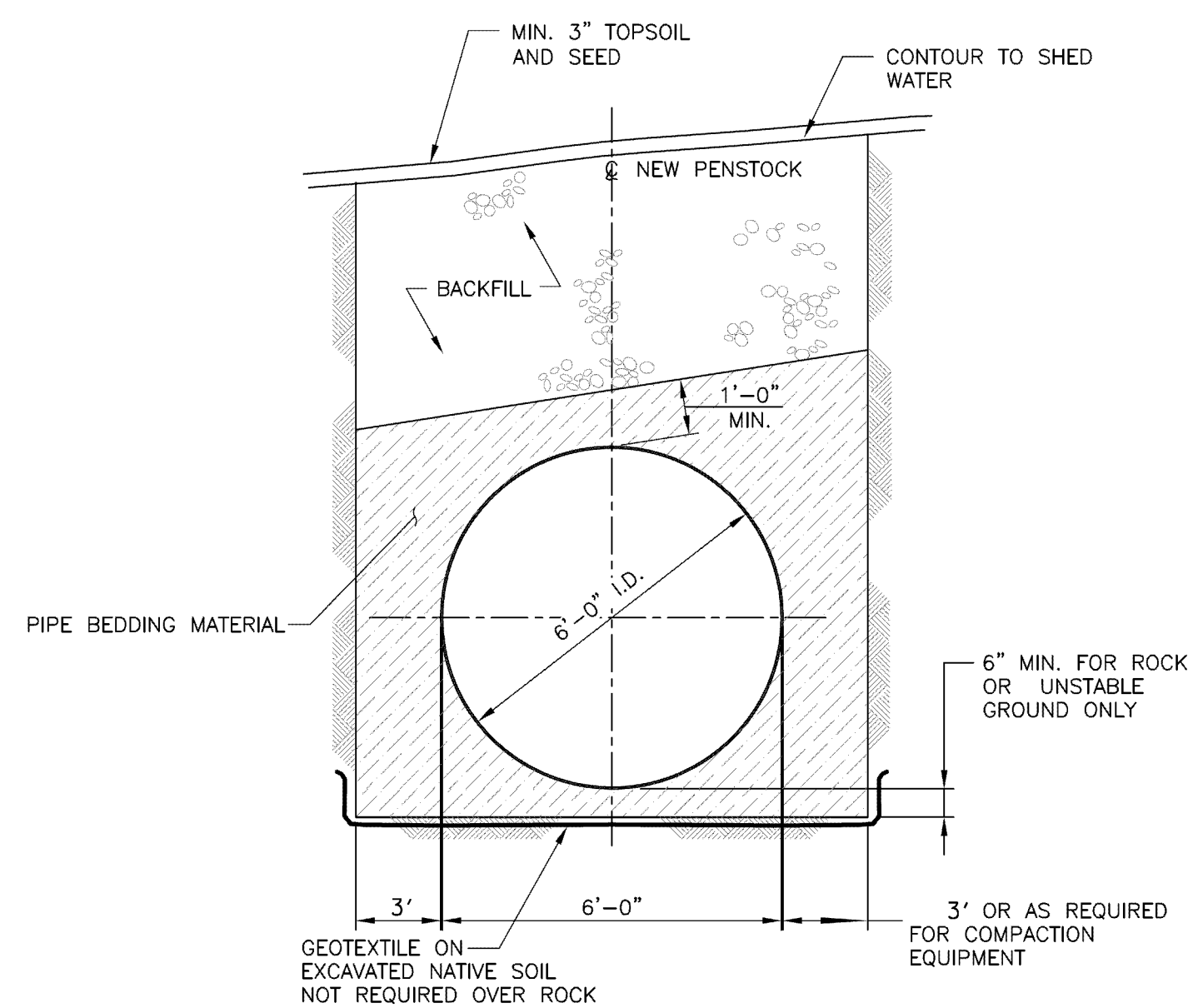
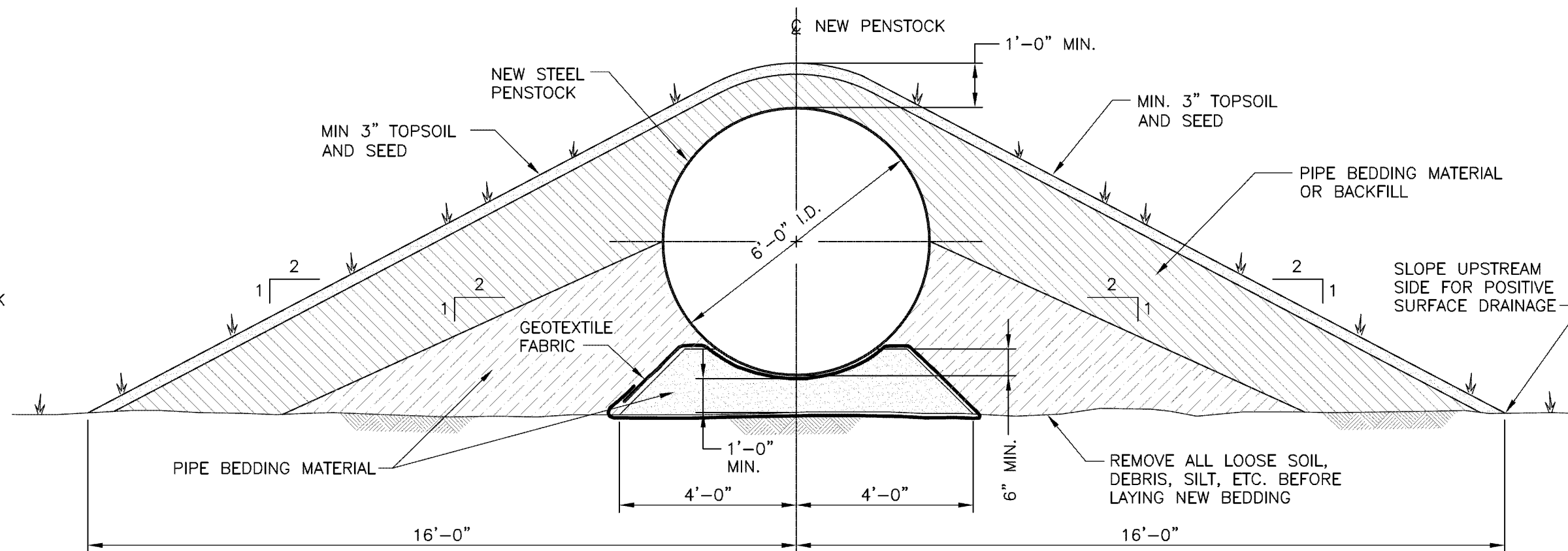
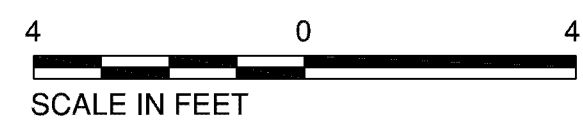


THIS DRAWING IS THE PROPERTY OF KLEINSCHMIDT ENERGY & WATER RESOURCE CONSULTANTS, INC. (KLEINSCHMIDT). IT IS TO BE USED ONLY FOR THE PROJECT AND SITE SPECIFICALLY IDENTIFIED HEREIN. ANY REUSE, REPRODUCTION, OR DISTRIBUTION OF THIS DRAWING WITHOUT THE WRITTEN PERMISSION OF KLEINSCHMIDT IS STRICTLY PROHIBITED. ANY SUCH REUSE, REPRODUCTION, OR DISTRIBUTION SHALL BE AT THE USER'S SOLE RISK AND WITHOUT LIABILITY TO KLEINSCHMIDT. © 2009 KLEINSCHMIDT ENERGY & WATER RESOURCE CONSULTANTS, INC.

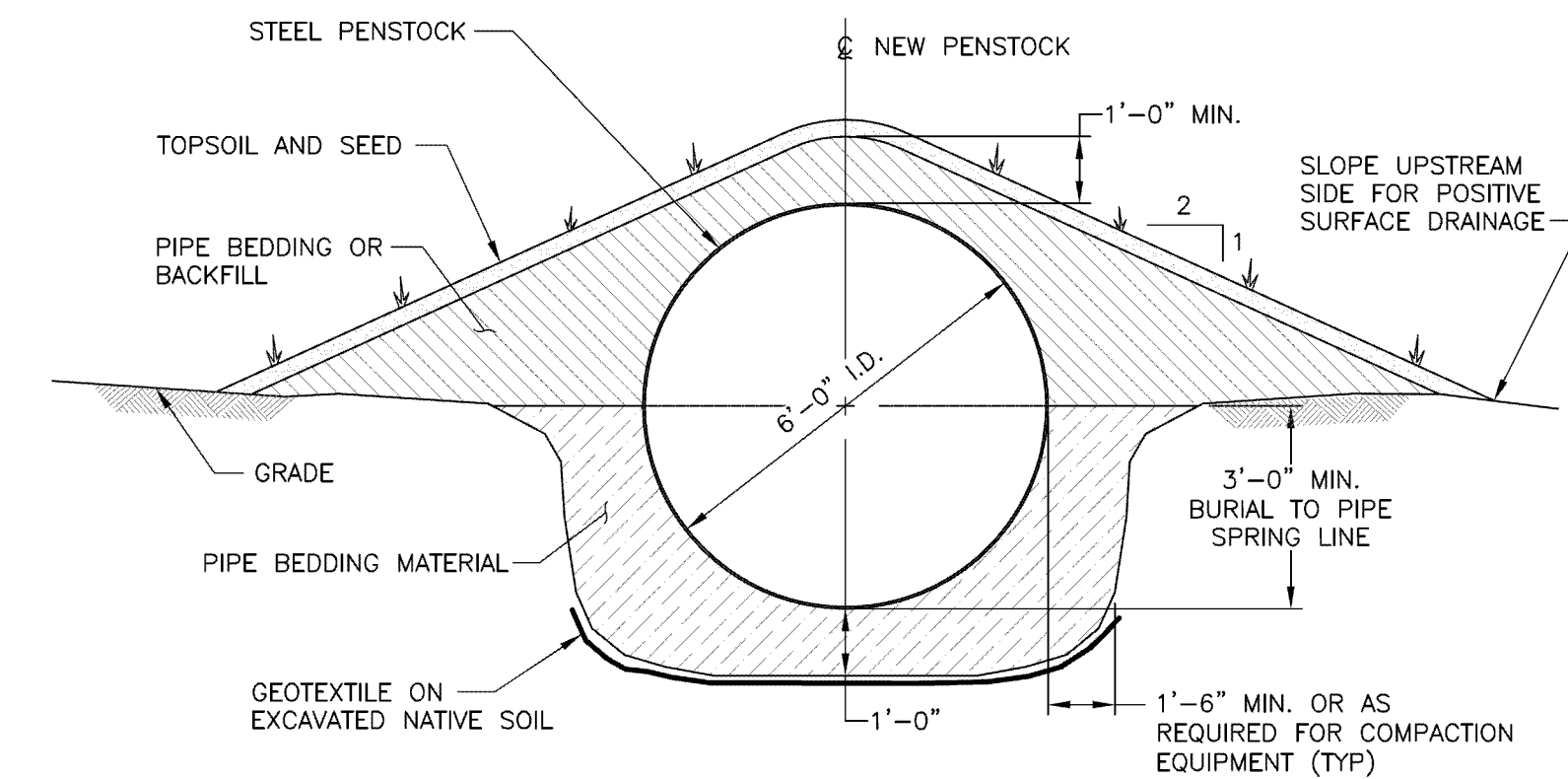
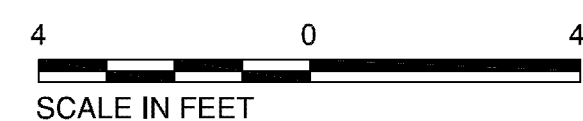
J:\V12\012\Drawings\2009 Work\Working Drawings\WORKING DWGS TO VTRAN\012-087 VTRAN Sheet 3.dwg



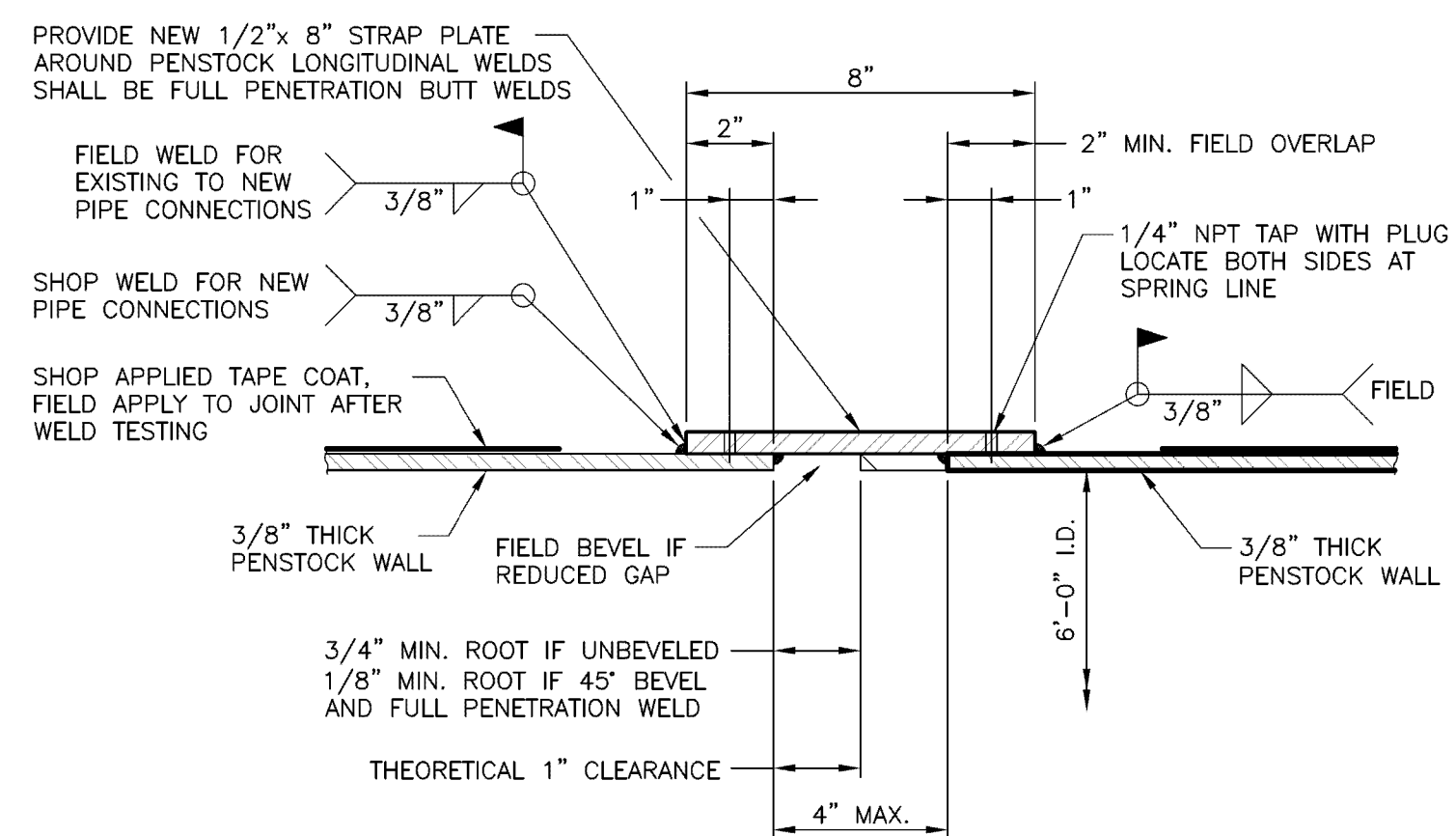
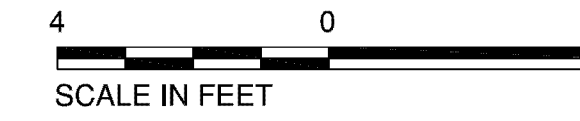
TYPICAL BURIED SECTION FOR PIPE WITH CROWN BELOW FINISHED GRADE



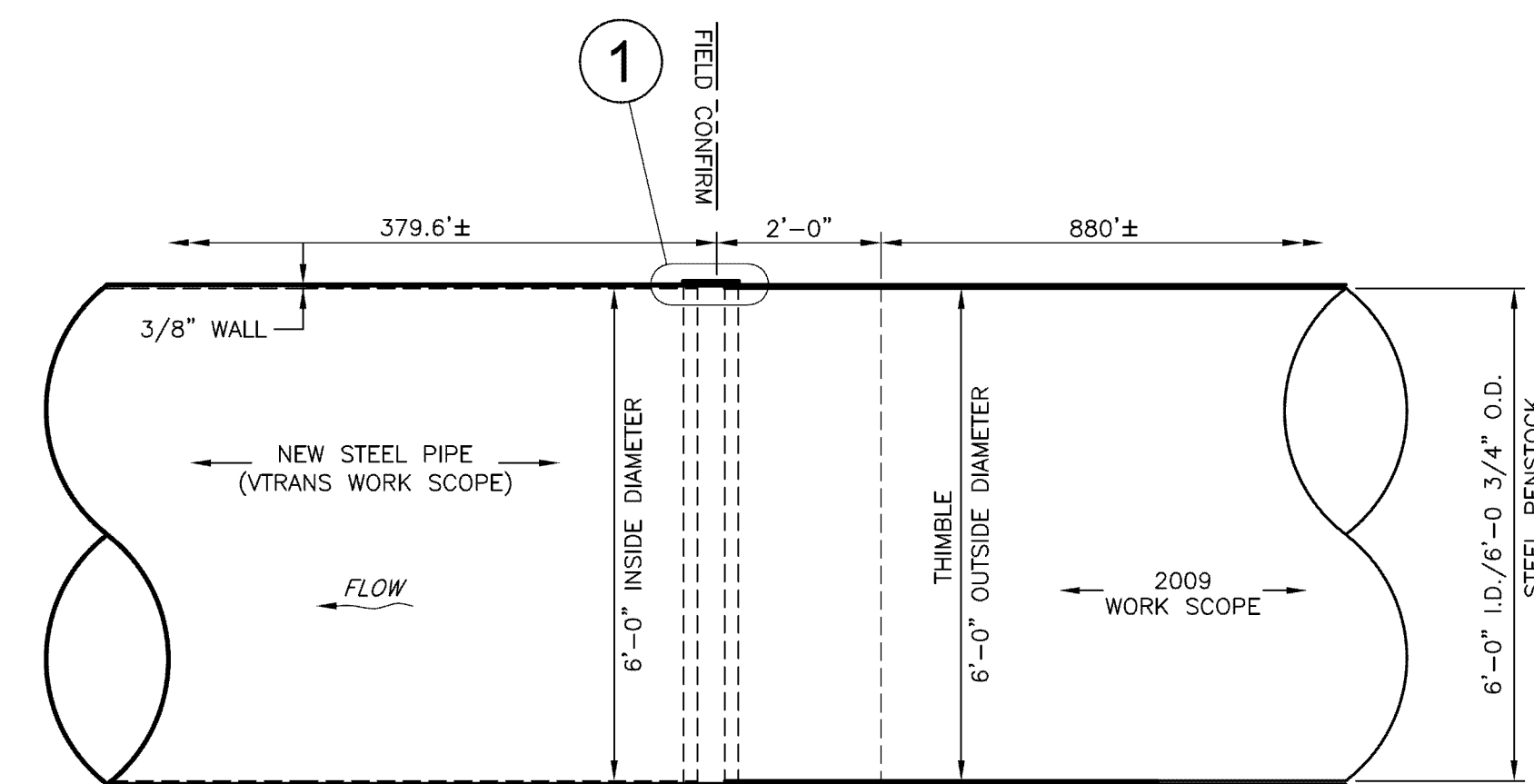
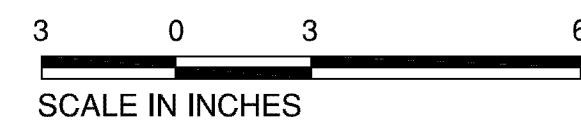
TYPICAL COVERED SECTION WITH PIPE ABOVE FINISHED GRADE



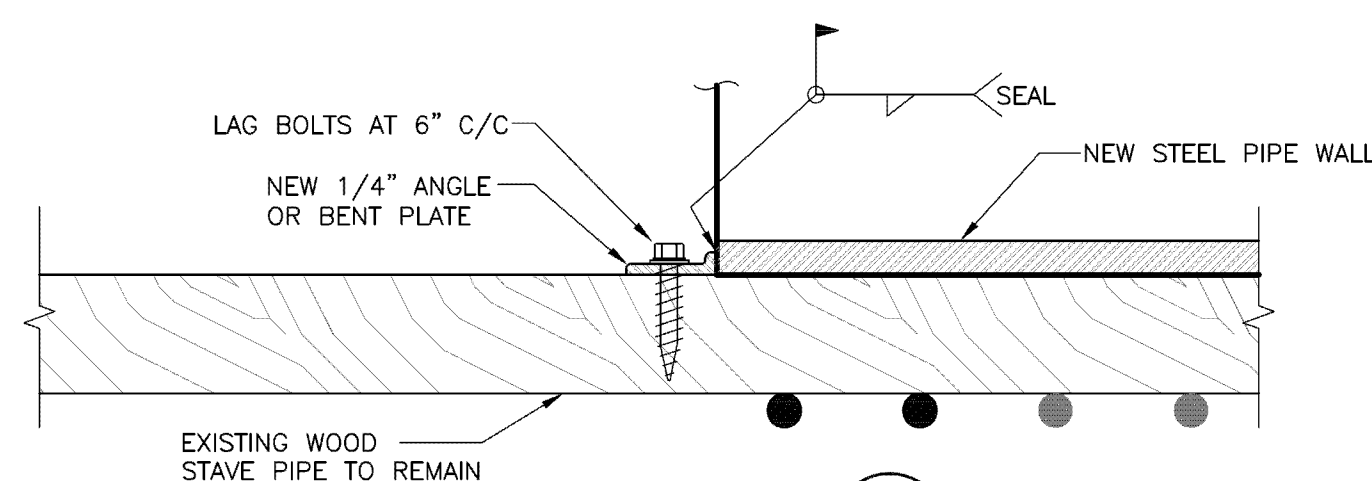
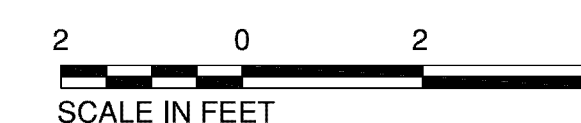
TYPICAL TRENCH SECTION FOR PIPE WITH CROWN ABOVE FINISHED GRADE



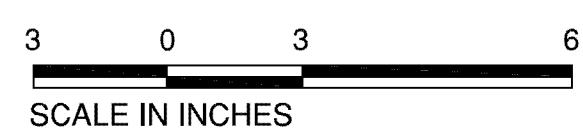
TYPICAL STEEL PIPE TO STEEL PIPE FIELD JOINT CONNECTION DETAIL



CONNECTION TO STEEL PENSTOCK (VTRANS LIMIT OF RESPONSIBILITY)



DETAIL 2



Scale: AS SHOWN		VERMONT AGENCY OF TRANSPORTATION MONTPELIER, VERMONT		ISSUED FOR BID PURPOSES ONLY
Project No: 012-087		U.S. RTE. 2 CABOT-DANVILLE, SECTION I PROJ. F, NO. 028-3(26) - GMP MARSHFIELD PENSTOCK		
AutoCad Release: 2007		TYPICAL PIPE SECTION DETAILS		SHEET 118 OF 250
Filename: 012-087 VTRAN Sheet 3.dwg				
Design By: JLD		75 Main St. P.O. Box 576 Pittsfield, Maine 04967 Telephone: (207) 487-3328 Fax: (207) 487-3124 www.KleinschmidtUSA.com		
Drawn By: CFT		Date Revised: 6-02-09		
Checked By: TLK				
Issued For Review: 3-24-09				
No.	Revision	Date		
1	ISSUED FOR BID	6-02-09		
2	REVISIONS	4-24-09		
3	ISSUED FOR REVIEW	3-24-09		