

STEEL BEAM GUARD RAIL
167+00 ~ 173+37.5 RT.

SCARIFYING PAVEMENT
169+25 ~ 172+75

EROSION MATTING
LT.
RT.

173+00 ~ 173+50
176+00 ~ 176+50

CONSTRUCT TURNOUT
167+00 ~ 169+00 LT., 16' W.

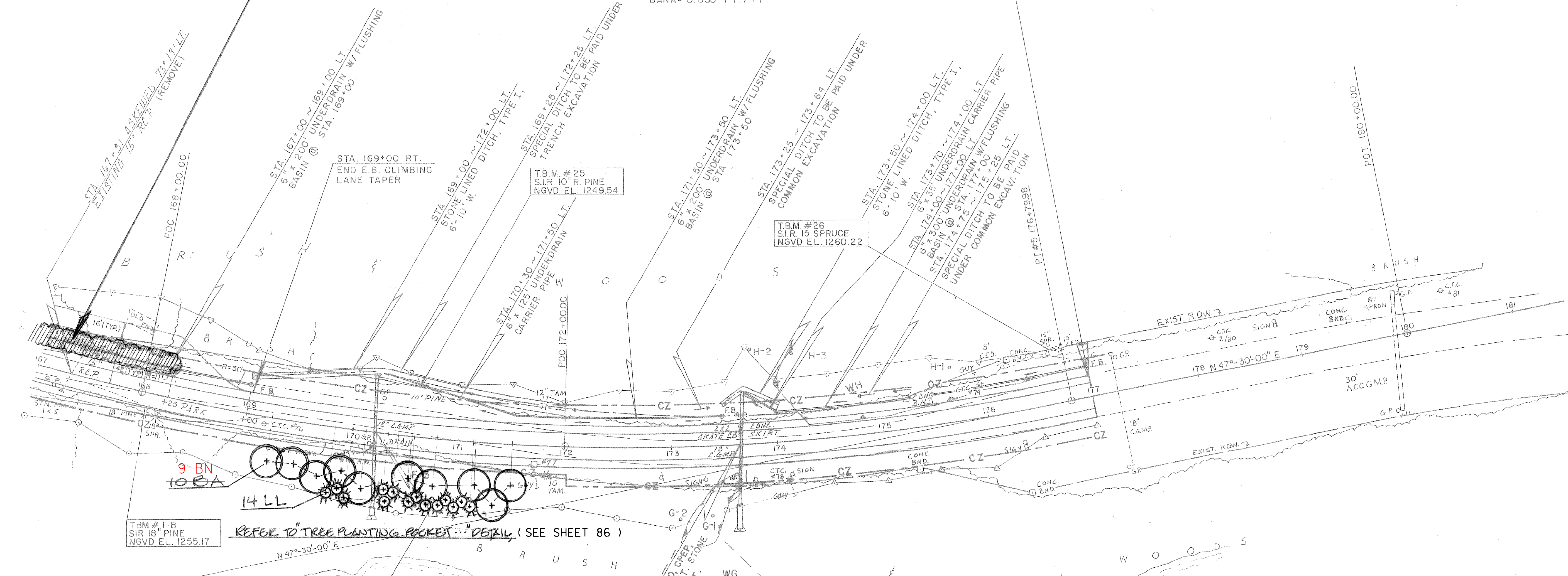
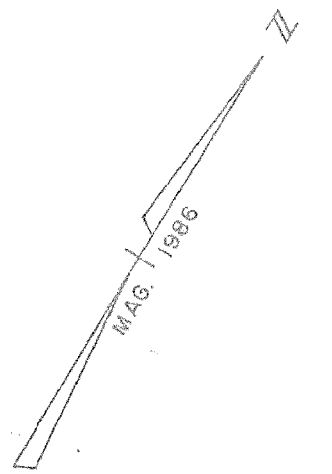
MELT
173+37.5 ~ 173+75 RT.

PUB. RD. DIV. NO.	STATE	FED. AID PROJ. NO.	FISCAL YEAR	SHEET NO.	TOTAL SHEETS
1	VT				

STA. 177+00.00
END PROJECT F028-3(26) CABOT 1980
SECTION I
MATCH EXISTING

145
150 AM (ARONIA M.) @ 3' OC
8-8.5' FROM EDGE OF PAVEMENT
(SEE CROSS SECTION AT STA. 167+00)

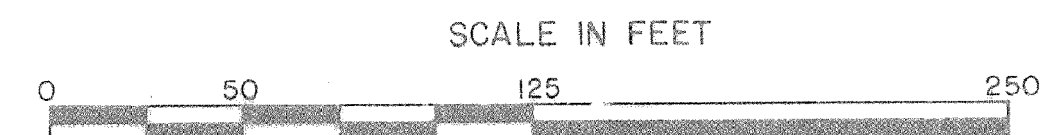
⊕ CURVE DATA #5
Δ = 51° 17' 48" LT.
D = 2° 45' 00"
R = 2083.48'
T = 1000.40'
L = 1865.33'
E = 227.73'
BANK = 0.050 FT. / FT.



REFER TO TREE PLANTING ROCKET... DETAIL (SEE SHEET 86)

* USE ONLY FOR LANDSCAPING

- LEGEND
- EDGE OF WETLAND
 - WETLAND BUFFER ZONE
 - DIG SAMPLE
 - CZ - CLEAN



DATUM
VERTICAL NGVD - 1929
HORIZONTAL N/A

CURVE #5
P.I. #5 168+15.05 = 166+79.58
Δ = 51° 17' 48" LT.

PROJECT NAME: CABOT-DANVILLE
PROJECT NUMBER: FECC F 028-3(26) C/1
FILE NAME: d78d058frm.dgn
PROJECT LEADER: K. ROBE
DESIGNED BY: J. STEELE
LANDSCAPING LAYOUT SHEET 5
PLOT DATE: 13-OCT-2010
DRAWN BY: E. B. SMALL
CHECKED BY: S. MENARD
SHEET 91 OF 250

REVISED BY D&K/JAG 12-31-09; 1-22-10