

REMOVAL & DISPOSAL OF
EXIST. GUARD RAIL

161+65 ~ 164+28 RT.
163+63 ~ 164+77 LT.

STEEL BEAM GUARD RAIL

152+00 ~ 154+87.5 RT.
155+97.5 ~ 159+10 RT.
161+62.5 ~ 167+00 RT.

MELT

154+87.5 ~ 155+25 RT.
155+60 ~ 155+97.5 RT.
161+25 ~ 161+62.5 RT.

ANCHOR FOR STEEL BEAM RAIL

159+10 RT.

CONSTRUCT DRIVES

LT. RT.
155+41, 18' W.

SCARIFYING PAVEMENT

152+25 ~ 156+50

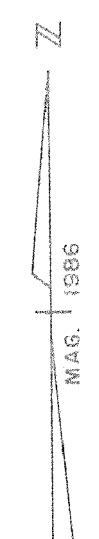
EROSION MATTING

LT. RT.
156+05 ~ 158+50

DRILLING & BLASTING OF
SOLID ROCK SUBGRADE

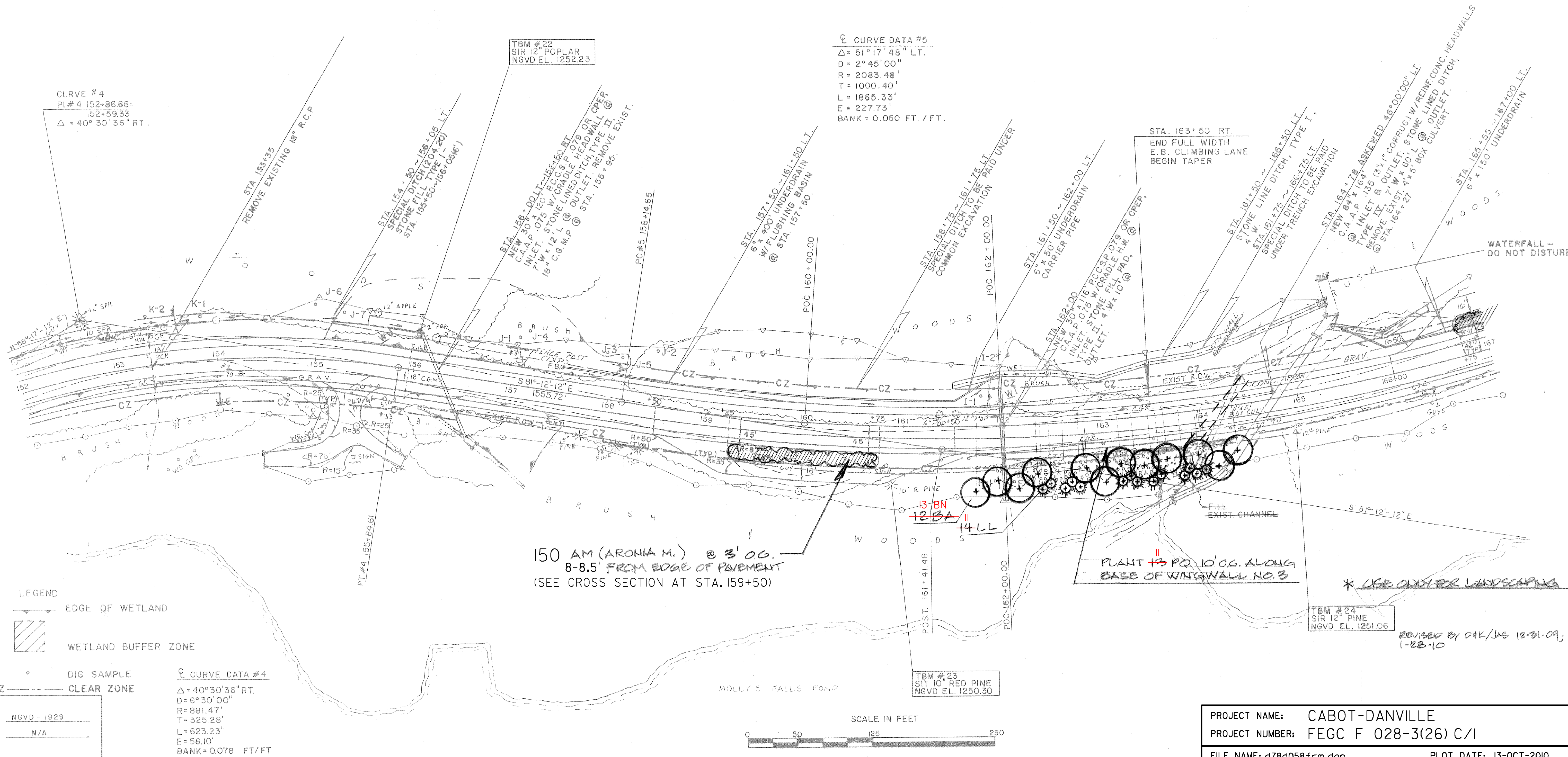
157+25 ~ 161+25 LT.

| PUB. RI. DIV. NO. | STATE | FED. AID PROJ. NO. | FISCAL YEAR | SHEET NO. | TOTAL SHEETS |
|-------------------|-------|--------------------|-------------|-----------|--------------|
| 1 | VT | | | | |



☺ CURVE DATA #5
 $\Delta = 51^\circ 17' 48''$ LT.
 $D = 2^\circ 45' 00''$
 $R = 2083.48'$
 $T = 1000.40'$
 $L = 1865.33'$
 $E = 227.73'$
 $BANK = 0.050$ FT. / FT.

CURVE #4
 $PI \# 4$ 152+86.66=
 152+59.33
 $\Delta = 40^\circ 30' 36''$ RT.



150 AM (ARONIA M.) @ 3' 00.
 8-8.5' FROM EDGE OF PAVEMENT
 (SEE CROSS SECTION AT STA. 159+50)

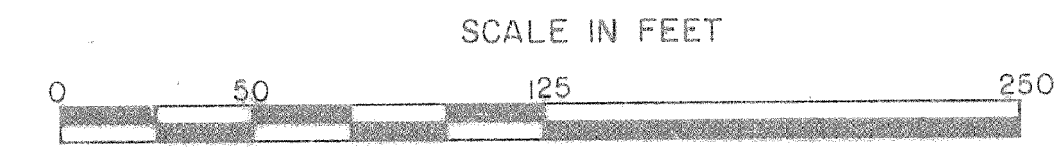
PLANT 13 PD 10' 00" ALONG
 BASE OF WINGWALL NO. 3

* USE OLDER LANDSCAPING

LEGEND
 EDGE OF WETLAND
 WETLAND BUFFER ZONE
 DIG SAMPLE
 CLEAR ZONE

☺ CURVE DATA #4
 $\Delta = 40^\circ 30' 36''$ RT.
 $D = 6^\circ 30' 00''$
 $R = 881.47'$
 $T = 325.28'$
 $L = 623.23'$
 $E = 58.10'$
 $BANK = 0.078$ FT/FT

DATUM
 VERTICAL NGVD - 1929
 HORIZONTAL N/A



PROJECT NAME: CABOT-DANVILLE
 PROJECT NUMBER: FECC F 028-3(26) C/1
 FILE NAME: d78d058frm.dgn
 PROJECT LEADER: K. ROBBE
 DESIGNED BY: J. STEELE
 LANDSCAPING LAYOUT SHEET 4
 PLOT DATE: 13-OCT-2010
 DRAWN BY: E. B. SMALL
 CHECKED BY: S. MENARD
 SHEET 90 OF 250

REVISED BY DAK/JAS 12-31-09;
 1-23-10