

REMOVAL & DISPOSAL
EXIST. GUARD RAIL
138 + 00 LT. ~ 144 + 71 RT.

STEEL BEAM GUARD RAIL
138 + 00 ~ 144 + 17.5 RT.
149 + 62.5 ~ 152 + 00 RT.

MELT
144 + 17.5 ~ 144 + 55 RT.
149 + 25 ~ 149 + 62.5 RT.

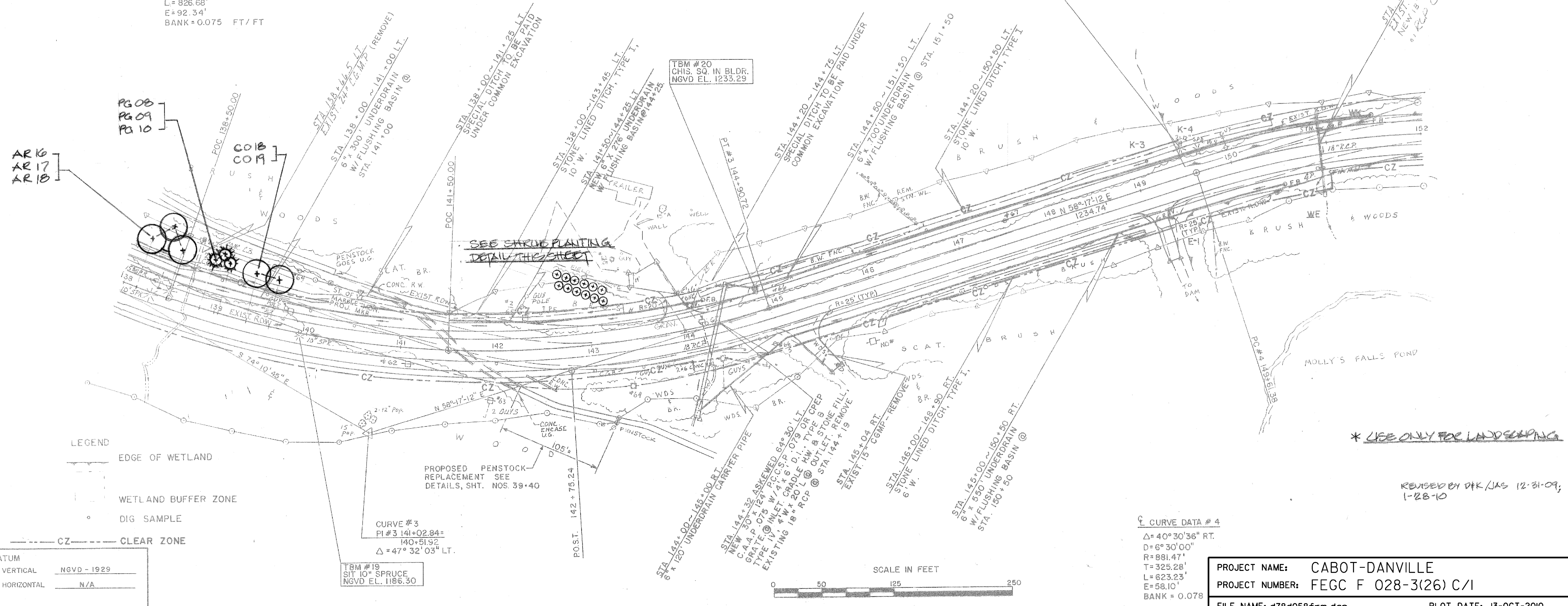
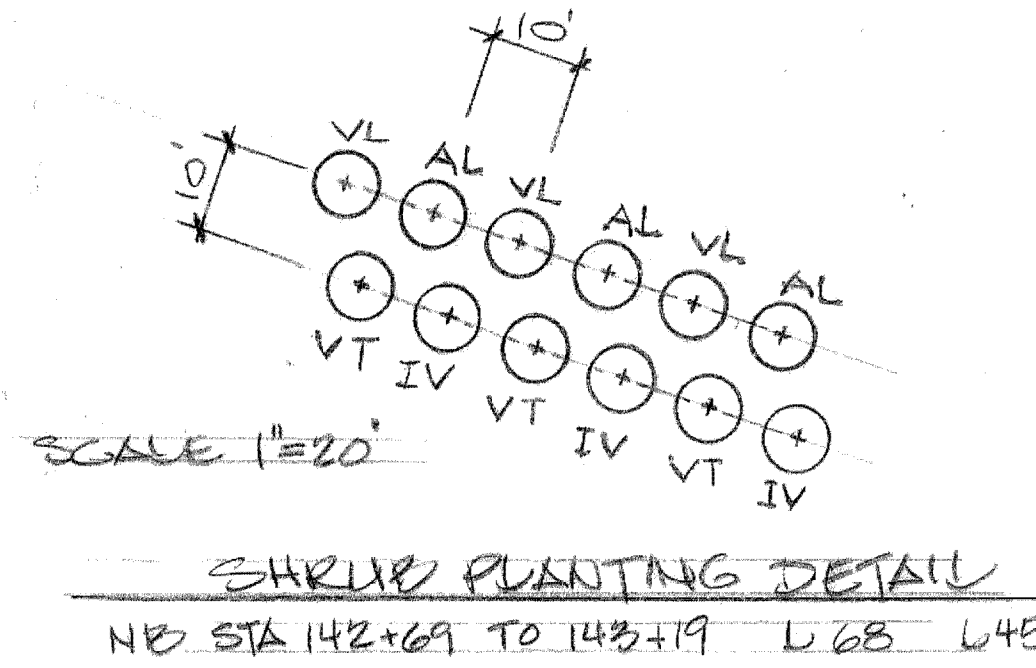
CONSTRUCT DRIVES
LT. RT.
144 + 06, 14' W 145 + 04, 14' W. (ASKEWED 66° 14' RT.)
(ASKEWED 66° 30' RT) 149 + 12, 14' W.

PENSTOCK REPLACEMENT
142 + 20 ~ 143 + 15 RT.

EROSION CONTROL
150 + 50 ~ 151 + 00

PUB. NO.	STATE	FED. AID PROJ. NO.	FISCAL YEAR	SHEET NO.	TOTAL SHEETS
1	VT				

Curve Data #3
 $\Delta = 47^\circ 32' 03''$ LT.
 $D = 5^\circ 45' 00''$
 $R = 996.45'$
 $T = 438.80'$
 $L = 826.68'$
 $E = 92.34'$
 $BANK = 0.075$ FT/FT



* USE ONLY FOR LANDSCAPING

REVISION BY DTK/JAS 12-31-09;
1-28-10

DATUM

VERTICAL	NGVD - 1929
HORIZONTAL	N/A

TBM #19
SIT 10" SPRUCE
NGVD EL. 1186.30

Curve Data #4
 $\Delta = 40^\circ 30' 36''$ RT.
 $D = 6^\circ 30' 00''$
 $R = 881.47'$
 $T = 325.28'$
 $L = 623.23'$
 $E = 58.10'$
 $BANK = 0.078$

PROJECT NAME:	CABOT-DANVILLE	PLOT DATE:	13-OCT-2010
PROJECT NUMBER:	FECC F 028-3(26) C/1	DRAWN BY:	I. SHEA
FILE NAME:	d78d058frm.dgn	CHECKED BY:	S. MENARD
PROJECT LEADER:	K. ROBBE	SHEET	89 OF 250
DESIGNED BY:	I. SHEA	LANDSCAPING LAYOUT SHEET 3	