

CONSTRUCT DRIVES  
T.H. 58 STA. 22+00 LT., 14' W

SCARIFYING PAVEMENT  
130 + 25 ~ 133 + 00

REMOVAL & DISPOSAL OF  
EXIST. GUARD RAIL  
127 + 18 RT ~ 138 + 00 LT.

CONSTRUCT T.H. 58 APPROACH  
124 + 34.02, 28.36' RT.

EROSION MATTING  
LT. 130 + 50 ~ 131 + 50  
RT.

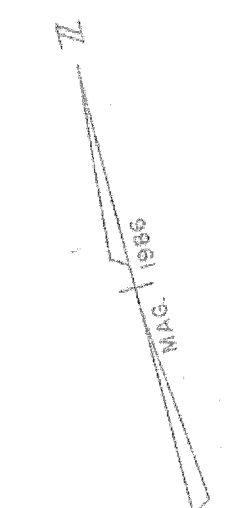
SLOPE STABILIZATION  
TYPE II STONE  
LT. 126 + 25 ~ 129 + 75  
RT. 123 + 00 ~ 124 + 00  
133 + 75 ~ 136 + 75  
T.H. 58 20 + 35 ~ 21 + 25

STEEL BEAM GUARD RAIL  
123 + 00 RT. ~ T.H. 58, 21 + 50 RT.  
125 + 92.5 ~ 138 + 00 RT.

MELT  
125 + 55 ~ 125 + 92.5 RT.

ANCHOR FOR STEEL BEAM RAIL  
T.H. 58, 21 + 50 RT.

PUB. NO.	STATE	FED. AID PROJ. NO.	FISCAL YEAR	SHEET NO.	TOTAL SHEETS
1	VT				



LEGEND

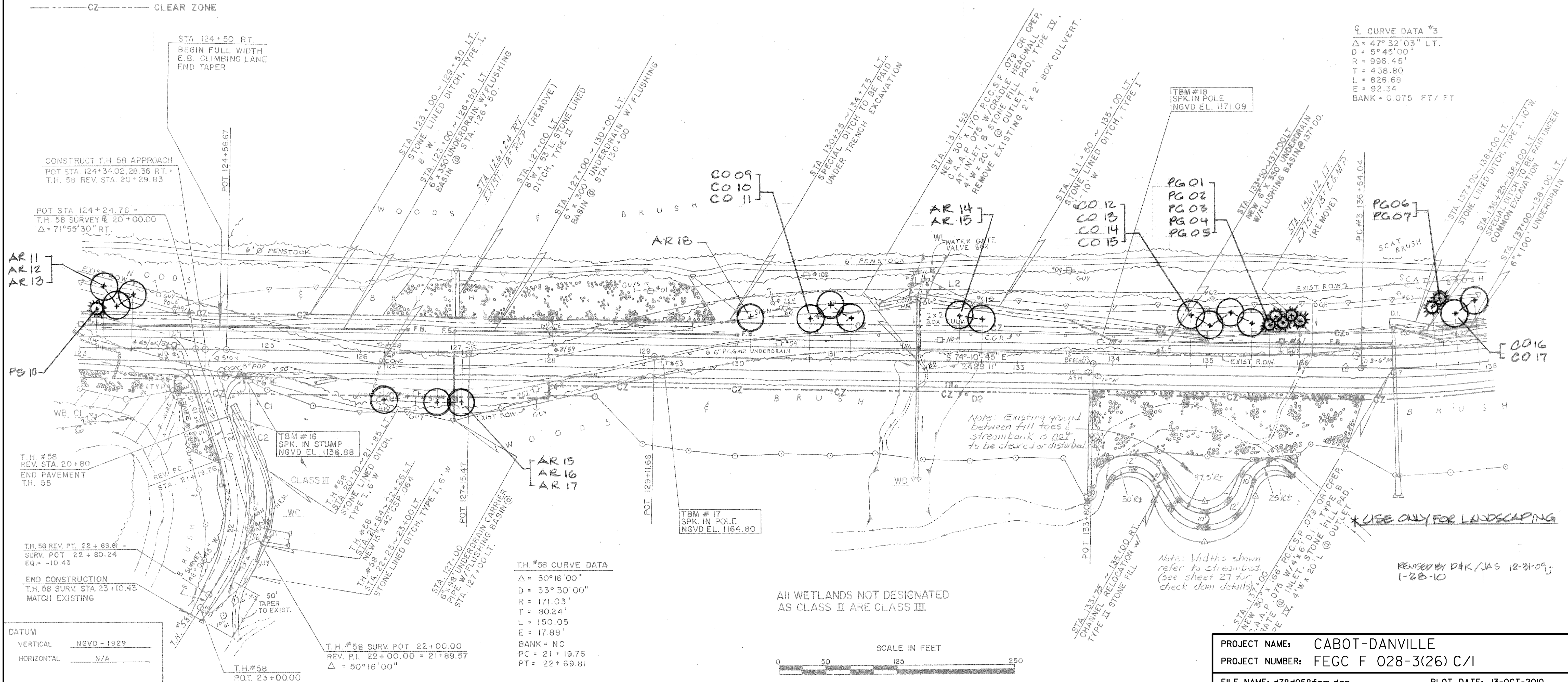
EDGE OF WETLAND

WETLAND BUFFER ZONE

DIG SAMPLE

CZ CLEAR ZONE

∠ CURVE DATA #3  
 $\Delta = 47^\circ 32' 03''$  LT.  
 $D = 5^\circ 45' 00''$   
 $R = 996.45'$   
 $T = 438.80$   
 $L = 826.68$   
 $E = 92.34$   
 BANK = 0.075 FT/FT



CONSTRUCT T.H. 58 APPROACH  
 POT STA. 124+34.02, 28.36 RT. =  
 T.H. 58 REV. STA. 20+29.83

POT STA. 124+24.76 =  
 T.H. 58 SURVEY @ 20+00.00  
 $\Delta = 71^\circ 55' 30''$  RT.

AR 11  
 AR 12  
 AR 13

PS 10

T.H. #58  
 REV. STA. 20+80  
 END PAVEMENT  
 T.H. 58

T.H. 58 REV. PT. 22+69.61 =  
 SURV. POT 22+80.24  
 EQ. = -10.43

END CONSTRUCTION  
 T.H. 58 SURV. STA. 23+10.43  
 MATCH EXISTING

DATUM  
 VERTICAL NGVD - 1929  
 HORIZONTAL N/A

T.H. #58  
 POT. 23+00.00

T.H. #58 SURV. POT 22+00.00  
 REV. P.I. 22+00.00 = 21+89.57  
 $\Delta = 50^\circ 16' 00''$

T.H. #58 CURVE DATA  
 $\Delta = 50^\circ 16' 00''$   
 $D = 33^\circ 30' 00''$   
 $R = 171.03'$   
 $T = 90.24'$   
 $L = 150.05$   
 $E = 17.89'$   
 BANK = NC  
 PC = 21 + 19.76  
 PT = 22 + 69.81

TBM # 17  
 SPK. IN POLE  
 NGVD EL. 1164.80

TBM # 18  
 SPK. IN POLE  
 NGVD EL. 1171.09

AR 14  
 AR 15

PG 01  
 PG 02  
 PG 03  
 PG 04  
 PG 05

PG 06  
 PG 07

CO 09  
 CO 10  
 CO 11

AR 18

AR 15  
 AR 16  
 AR 17

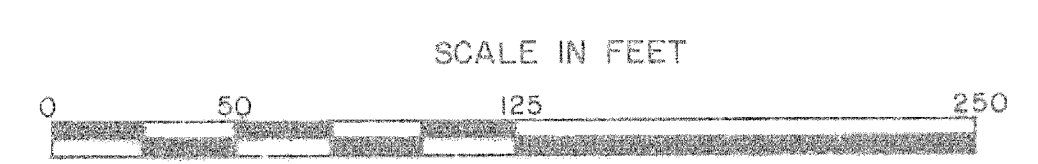
Note: Existing ground  
 between fill toes &  
 streambank is not  
 to be cleared or disturbed.

Note: Widths shown  
 refer to streambed.  
 (See sheet 27 for  
 check dam details)

\*USE ONLY FOR LANDSCAPING

REVISION BY DAK/JAS 12-21-09;  
 1-28-10

ALL WETLANDS NOT DESIGNATED  
 AS CLASS II ARE CLASS III.



PROJECT NAME: CABOT-DANVILLE  
 PROJECT NUMBER: FECC F 028-3(26) C/1  
 FILE NAME: d78d058frm.dgn  
 PROJECT LEADER: K. ROBE  
 DESIGNED BY: I. SHEA  
 LANDSCAPING LAYOUT SHEET 2  
 PLOT DATE: 13-OCT-2010  
 DRAWN BY: I. SHEA  
 CHECKED BY: S. MENARD  
 SHEET 88 OF 250