

CONSTRUCT DRIVES
T.H. 58 STA. 22+00 LT., 14' W

SCARIFYING PAVEMENT
130 + 25 ~ 133 + 00

REMOVAL & DISPOSAL OF
EXIST. GUARD RAIL
127 + 18 RT ~ 138 + 00 LT.

CONSTRUCT T.H. 58 APPROACH
124 + 34.02, 28.36' RT.

EROSION MATTING
LT 124+50 ~ 126+25 RT 125+00 ~ 126+00
131+65 ~ 132+20 TH 58 21+25 ~ 23+00

EPSC LEGEND:

	PROJECT DEMARCATION FENCING
	BARRIER FENCING
	SILT FENCING, WOVEN WIRE REINFORCED
	EROSION CONTROL MATTING
	TYPE II STONE STABILIZATION
	STONE CHECK DAM
	INITIAL CONSTRUCTION ACTIVITIES
	INLET PROTECTION DEVICE, TYPE 1 (PIPE INLET)
	INLET PROTECTION DEVICE, TYPE 1 (DROP INLET)
	OUTLET PROTECTION DEVICE, TYPE 1 (RIPRAP)
	SUBAREA (>0.5 ac)

LEGEND

EDGE OF WETLAND

WETLAND BUFFER ZONE

DIG SAMPLE

CZ CLEAR ZONE

STEEL BEAM GUARD RAIL
123 + 00 RT. ~ T.H. 58, 21+50 RT.
125 + 92.5 ~ 138 + 00 RT.

MELT
125 + 55 ~ 125 + 92.5 RT.

ANCHOR FOR STEEL BEAM RAIL
T.H. 58, 21 + 50 RT.

SLOPE STABILIZATION
TYPE II STONE
LT 126 + 25 ~ 129 + 75 RT 123+00 ~ T.H. 21+25
128+75 ~ 138+00

INLET PROTECTION, TYPE 1 (CULVERT)
131+93 LT

INLET PROTECTION, TYPE 1 (DROP INLET)
137+00 LT

OUTLET PROTECTION, TYPE 1 (RIPRAP)
131+93 RT
137+00 RT

BARRIER FENCING
123+00 ~ 124+00 RT
125+00 ~ 138+00 RT
TH 58 20+50 ~ 23+10 LT & RT

PROJECT DEMARCATION FENCING
123+00 ~ 138+00 LT

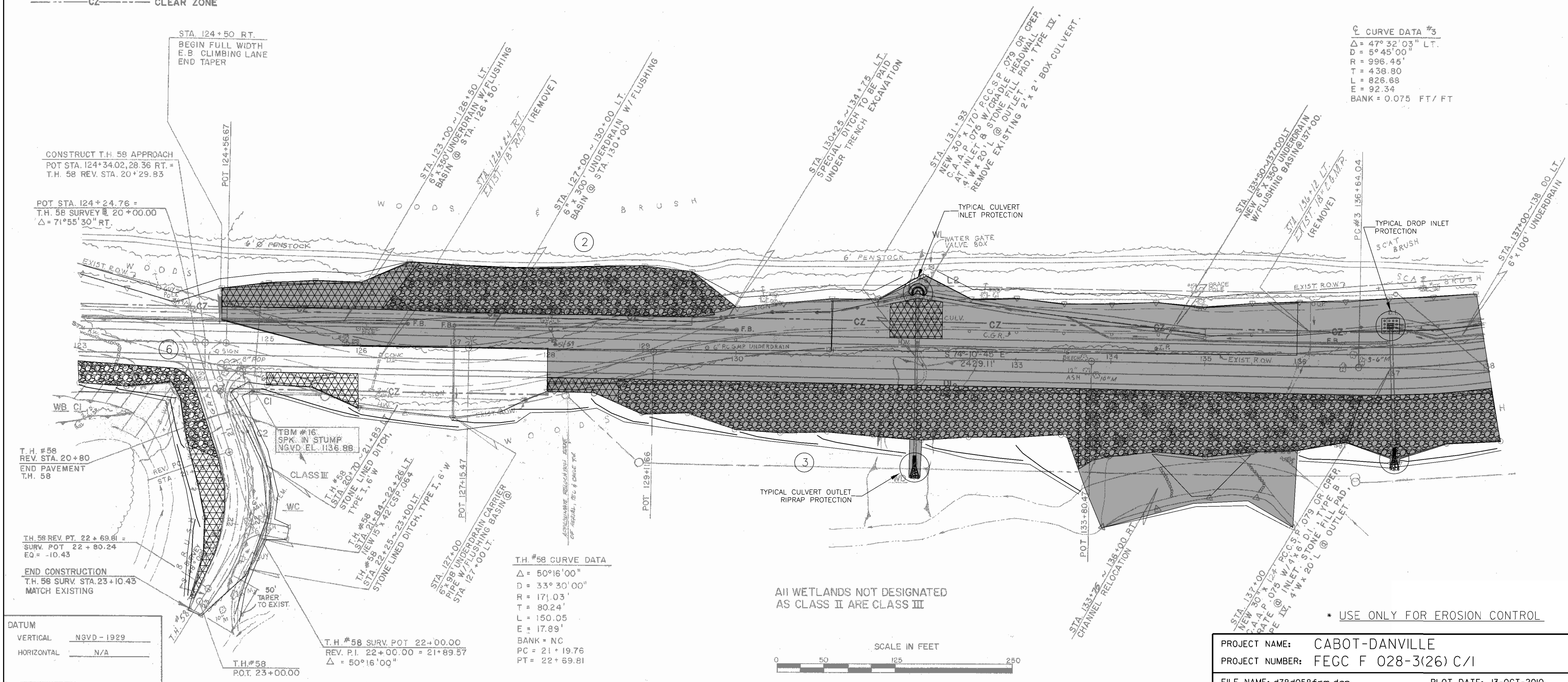
SILT FENCING, WOVEN WIRE REINFORCED
123+00 ~ 124+00 RT
125+00 ~ 133+50 RT
136+00 ~ 138+00 RT
TH 58 20+50 ~ 23+10 RT

TEMP. STONE CHECK DAMS
123+00 ~ 138+00 LT
TH 58 21+00 ~ 23+00 LT

PUB. RD. DIV. NO.	STATE	FED. AID PROJ. NO.	FISCAL YEAR	SHEET NO.	TOTAL SHEETS
1	VT				



C CURVE DATA #3
Δ = 47° 32' 03" LT.
D = 5° 45' 00"
R = 996.45'
T = 438.80
L = 826.68
E = 92.34
BANK = 0.075 FT/FT



ALL WETLANDS NOT DESIGNATED AS CLASS II ARE CLASS III



* USE ONLY FOR EROSION CONTROL

DATUM
VERTICAL NGSVD - 1929
HORIZONTAL N/A

T.H. #58 REV. STA. 22 + 69.61 = SURV. POT 22 + 80.24 EQ = -10.43
END CONSTRUCTION
T.H. 58 SURV. STA. 23 + 10.43
MATCH EXISTING

T.H. #58 REV. STA. 20 + 80
END PAVEMENT
T.H. 58

CONSTRUCT T.H. 58 APPROACH
POT STA. 124 + 34.02, 28.36 RT. = T.H. 58 REV. STA. 20 + 29.93
POT STA. 124 + 24.76 = T.H. 58 SURV. STA. 20 + 00.00 Δ = 71° 55' 30" RT.

STA. 124 + 50 RT.
BEGIN FULL WIDTH E.B. CLIMBING LANE
END TAPER

FBM #16
SPK. IN STUMP
NGVD. EL. 1136.88

T.H. #58 SURV. POT 22 + 00.00
REV. P.I. 22 + 00.00 = 21 + 89.57
Δ = 50° 16' 00"

T.H. #58 CURVE DATA
Δ = 50° 16' 00"
D = 33° 30' 00"
R = 171.03'
T = 80.24'
L = 150.05'
E = 17.89'
BANK = NC
PC = 21 + 19.76
PT = 22 + 69.81

PROJECT NAME: CABOT-DANVILLE
PROJECT NUMBER: FECC F 028-3(26) C/1
FILE NAME: d78d058frm.dgn
PLOT DATE: 13-OCT-2010
PROJECT LEADER: K. ROBBIE
DRAWN BY: I. SHEA
DESIGNED BY: I. SHEA
EPSC LAYOUT SHEET 3
CHECKED BY: S. MENARD
SHEET 50 OF 250