

EPSC NOTES:

1. SEDIMENT CONTROL MEASURES (SILT FENCE, ETC.) TO BE INSTALLED PRIOR TO INITIATION OF PRIMARY EARTH DISTURBING ACTIVITIES.
2. SLOPES 1:3 OR GREATER TO BE MATTED WITH GEOTEXTILE EROSION MATTING.
3. TYPE II STONE STABILIZATION TO BE USED IN AREAS WITH SLOPES OF 1:1/2 OR AS SHOWN ON THE PLANS.
4. DISTURBED AREAS THAT ARE NOT BEING PAVED OR STABILIZED WITH STONE SHALL BE SEEDED AND PROTECTED WITH EITHER EROSION MATTING (AS SHOWN) OR STRAW MULCH AT THE STANDARD RATE OF 2 TONS/ACRE.
5. MAXIMUM CONCURRENT EARTH DISTURBANCE IS 2 ACRES.
6. ALL AREAS OF DISTURBANCE MUST HAVE TEMPORARY OR FINAL STABILIZATION WITHIN 7 DAYS OF THE INITIAL DISTURBANCE. AFTER THIS TIME, ANY DISTURBANCE IN THE AREA MUST BE STABILIZED AT THE END OF EACH WORK DAY. THE FOLLOWING EXCEPTIONS APPLY:
  - i) STABILIZATION IS NOT REQUIRED IF WORK IS TO CONTINUE IN THE AREA WITHIN THE NEXT 24 HOURS AND THERE IS NO PRECIPITATION FORECAST FOR THE NEXT 24 HOURS.
  - ii) STABILIZATION IS NOT REQUIRED IF THE WORK IS OCCURRING IN A SELF-CONTAINED EXCAVATION (i.e. - NO OUTLET) WITH A DEPTH OF 2 FEET OR GREATER.
7. PERMANENT STABILIZATION MEASURES TO BE IN PLACE WITHIN 48 HOURS AFTER FINAL GRADES ARE ACHIEVED.
8. LIMITS OF DISTURBANCE TO BE SHOWN WITH 4" WIDE PROJECT DEMARCATION FENCE (PDF), OR BARRIER FENCE IN SENSITIVE AREAS, AS SHOWN ON THE PLANS OR DIRECTED BY THE ON-SITE PLAN COORDINATOR.
9. SILT FENCE NOT TO RUN ACROSS CONTOURS OR IN AREAS OF CONCENTRATED FLOW. ACTUAL PLACEMENT OF SILT FENCE TO BE REVIEWED IN THE FIELD AT THE TIME OF INSTALLATION.
10. EPSC MEASURES SHALL BE INSPECTED BY OR UNDER THE DIRECTION OF THE ON-SITE PLAN COORDINATOR AT LEAST ONCE EVERY 7 CALENDAR DAYS AND AS SOON AS POSSIBLE BUT NO LATER THAN 24 HOURS AFTER ANY STORM EVENT WHICH GENERATES A DISCHARGE OF STORMWATER RUNOFF FROM THE CONSTRUCTION SITE.
11. SEE EPSC DETAIL SHEETS FOR INSTALLATION & MAINTENANCE INFORMATION ON EPSC MEASURES SHOWN ON THIS PLAN.
12. TO THE EXTENT POSSIBLE, SWALES TO BE STABILIZED PRIOR TO DIRECTING STORMWATER TO THEM.
13. SPECIFIC EPSC MEASURES SHOWN ON THIS PLAN ARE BASED ON AN INITIAL ASSESSMENT OF EXPECTED PROJECT CONDITIONS. THROUGHOUT THE CONSTRUCTION PROCESS, THE ON-SITE PLAN COORDINATOR SHALL MONITOR THE EFFECTIVENESS OF THESE MEASURES GIVEN THE ACTUAL FIELD CONDITIONS, AND SHALL MAKE MODIFICATIONS TO THE PLAN, AS NECESSARY, IN ORDER TO COMPLY WITH THE PROVISIONS OF THE CGP.

STA. 100+00.00  
 RUSHFIELD - CABOT 1978  
 BEGIN PROJECT F028-3(26)  
 SECTION I  
 MATCH EXISTING

EROSION MATTING  
 LT. 101+67 ~ 109+50 RT. 104+50 ~ 110+00

BARRIER FENCING  
 100+00 ~ 110+00 RT

SILT FENCING, WOVEN WIRE REINFORCED  
 100+50 ~ 110+00 RT

PROJECT DEMARCATION FENCING  
 100+00 ~ 110+00 LT

TEMP. STONE CHECK DAMS  
 100+00 ~ 110+00 LT

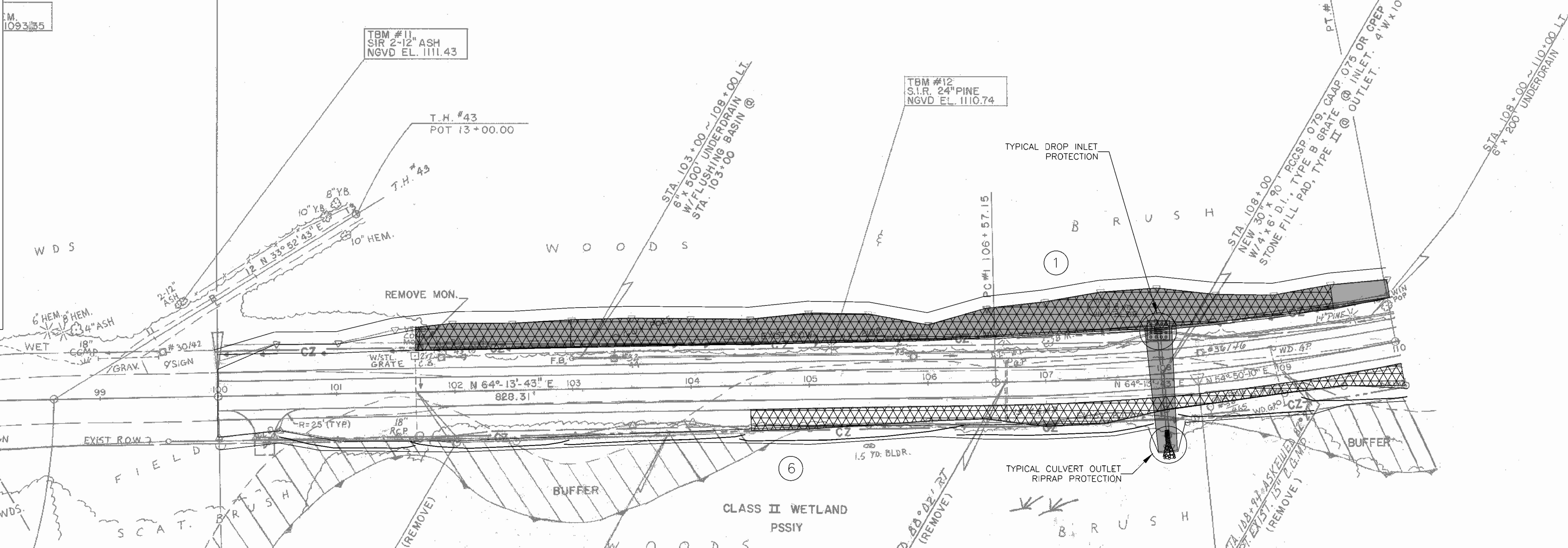
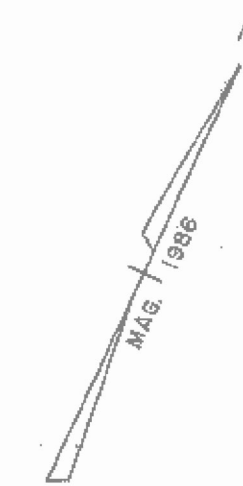
CONSTRUCT DRIVES  
 LT. RT.  
 100+40 - APRON ONLY

INLET PROTECTION, TYPE 1 (DROP INLET)  
 108+00 LT

OUTLET PROTECTION, TYPE 1 (RIPRAP)  
 108+00 RT

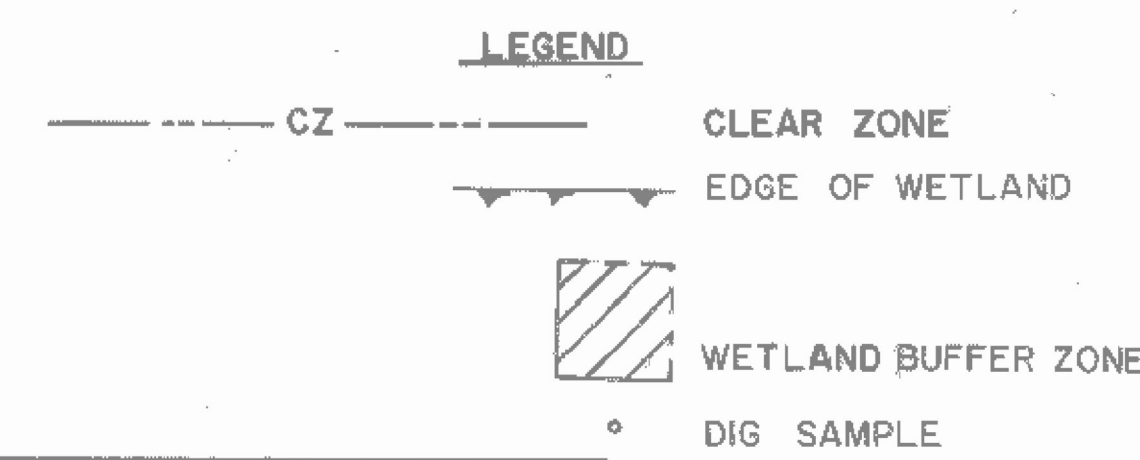
∠ CURVE DATA #1  
 Δ = 9° 23' 33" LT.  
 D = 2° 45' 00"  
 R = 2083.48'  
 T = 171.16'  
 L = 341.55'  
 E = 7.02'  
 BANK = 0.050 FT/ FT

| PUB. REV. DIV. NO. | STATE | FED. AID PROJ. NO. | FISCAL YEAR | SHEET NO. | TOTAL SHEETS |
|--------------------|-------|--------------------|-------------|-----------|--------------|
| 1                  | VT    |                    |             |           |              |



EPSC LEGEND:

|  |  |
|--|--|
|  | PROJECT DEMARCATION FENCING                  |
|  | BARRIER FENCING                              |
|  | SILT FENCING, WOVEN WIRE REINFORCED          |
|  | EROSION CONTROL MATTING                      |
|  | TYPE II STONE STABILIZATION                  |
|  | STONE CHECK DAM                              |
|  | INITIAL CONSTRUCTION ACTIVITIES              |
|  | INLET PROTECTION DEVICE, TYPE 1 (PIPE INLET) |
|  | INLET PROTECTION DEVICE, TYPE 1 (DROP INLET) |
|  | OUTLET PROTECTION DEVICE, TYPE 1 (RIPRAP)    |
|  | SUBAREA (>0.5 ac)                            |



DATUM  
 VERTICAL NGVD - 1929  
 HORIZONTAL N/A



\* USE ONLY FOR EROSION CONTROL

PROJECT NAME: CABOT-DANVILLE  
 PROJECT NUMBER: FECC F 028-3(26) C/1  
 FILE NAME: d78d058frm.dgn  
 PROJECT LEADER: K. ROBBIE  
 DESIGNED BY: I. SHEA  
 EPSC LAYOUT SHEET 1  
 PLOT DATE: 13-OCT-2010  
 DRAWN BY: I. SHEA  
 CHECKED BY: S. MENARD  
 SHEET 48 OF 250