

STEEL BEAM GUARD RAIL

167+00 ~ 173+44.5 RT.

SCARIFYING PAVEMENT

169+25 ~ 172+75

REMOVAL & DISPOSAL OF GUIDE POSTS

170+20.5 RT IEA.
173+64 LT IEA.
173+64 RT IEA.

MANUFACTURED TERMINAL SECTION, FLARED

173+44.5 ~ 173+82 RT.

CONSTRUCT TURNOUT

167+00 ~ 169+00 LT, 16' W.

SLOPE STABILIZATION
STONE FILL, TYPE II

LT.

RT. 167+50 RT
167+00 ~ 172+25 RT.

168+50 ~ 172+32 RT
173+08 ~ 174+28 LT ADDED

GRUBBING MATERIAL

167+00 ~ 172+25 RT.
167+50 RT
168+50 ~ 172+32 RT

PUB. RD. DIV. NO.	STATE	FED. AID PROJ. NO.	FISCAL YEAR	SHEET NO.	TOTAL SHEETS
1	VT				

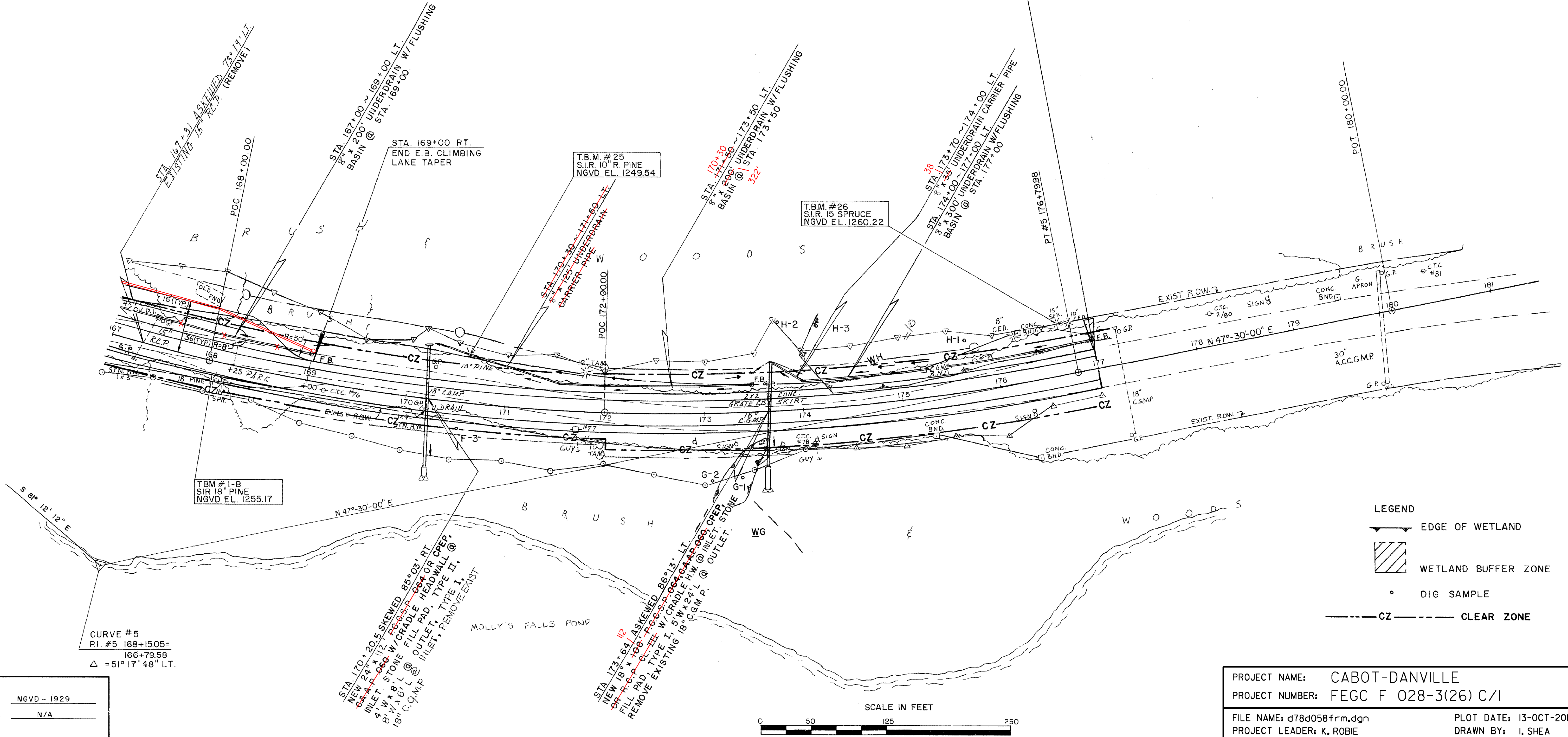
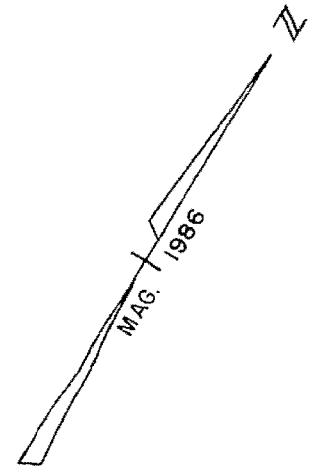
STA. 177+00.00

END PROJECT F028-3(26)
SECTION 1
MATCH EXISTING

CABOT 1980

¢ CURVE DATA #5

Δ = 51° 17' 48" LT.
D = 2° 45' 00"
R = 2083.48'
T = 1000.40'
L = 1865.33'
E = 227.73'
BANK = 0.050 FT. / FT.



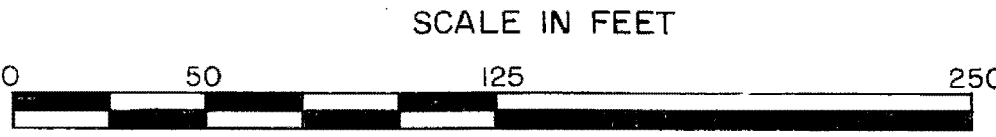
T.B.M. # 1-B
S.I.R. 18" PINE
NGVD EL. 1255.17

T.B.M. # 25
S.I.R. 10" R. PINE
NGVD EL. 1249.54

T.B.M. # 26
S.I.R. 15 SPRUCE
NGVD EL. 1260.22

CURVE #5
P.I. #5 168+1505=
166+79.58
Δ = 51° 17' 48" LT.

- LEGEND
- EDGE OF WETLAND
 - ▨ WETLAND BUFFER ZONE
 - DIG SAMPLE
 - CZ --- CLEAR ZONE



DATUM

VERTICAL	NGVD - 1929
HORIZONTAL	N/A

PROJECT NAME: CABOT-DANVILLE
 PROJECT NUMBER: FECC F 028-3(26) C/1
 FILE NAME: d78d058frm.dgn
 PROJECT LEADER: K. ROBBE
 DESIGNED BY: I. SHEA
 LAYOUT SHEET 6
 PLOT DATE: 13-OCT-2010
 DRAWN BY: I. SHEA
 CHECKED BY: S. MENARD
 SHEET 43 OF 250