

REMOVAL & DISPOSAL OF EXIST. GUARD RAIL

160+96 ~ 165+09 RT.
161+80 ~ 165+69 LT.

CONSTRUCT DRIVES

LT. RT.
155+41, 18' W.
30'

SCARIFYING PAVEMENT

152+25 ~ 156+50

GRUBBING MATERIAL

152+00 ~ 154+25 RT. 154+34
156+00 ~ 155+75 ~ 158+75 RT.
161+50 ~ 161+30 ~ 162+75 RT. 163+00
164+50 ~ 164+25 ~ 167+00 RT.

DRILLING & BLASTING OF SOLID ROCK SUBGRADE

157+25 ~ 161+25 160+75 LT
159+75 ~ 160+30 RT

SLOPE STABILIZATION STONE FILL, TYPE II

00152+75 ~ 154+25 RT. 34
156+00 ~ 155+75 ~ 158+75 RT.
50161+30 ~ 162+75 RT. 163+00
164+25 ~ 167+00 RT.
165+50
164+50 ~ 165+15 LT

PUB. RD. DIV. NO.	STATE	FED. AID PROJ. NO.	FISCAL YEAR	SHEET NO.	TOTAL SHEETS
1	VT				

STEEL BEAM GUARD RAIL

152+00 ~ 154+87.5 RT. 80
156+04.5 ~ 155+97.5 ~ 159+10 RT.
161+03 ~ 161+06.9 ~ 162+69.4 RT. 68
162+11 ~ 163+65 ~ 164+27.5 LT. 23
164+21 ~ 164+19.5 ~ 167+00 RT.
165+43 ~ 165+47.1 ~ 166+47.1 LT.

CONSTRUCT TURNOUT

158+50 ~ 161+50 RT., 16' W.
166+00 ~ 167+00 LT., 16' W.

MANUFACTURED TERMINAL SECTION, FLARED

154+87.5 ~ 155+25.75 RT. REMOVE
155+60.5 ~ 155+97.5 RT. SALVAGE
163+27.5 ~ 163+65 LT.
161+74 ~ 162+11 LT

BRIDGE RAILING - GALVANIZED NETC 2 RAIL

162+98.1 ~ 163+90.8 RT. 53
164+57.1 ~ 165+17.7 LT. 13

GUARDRAIL APPROACH SECTION - GALVANIZED NETC 2 RAIL

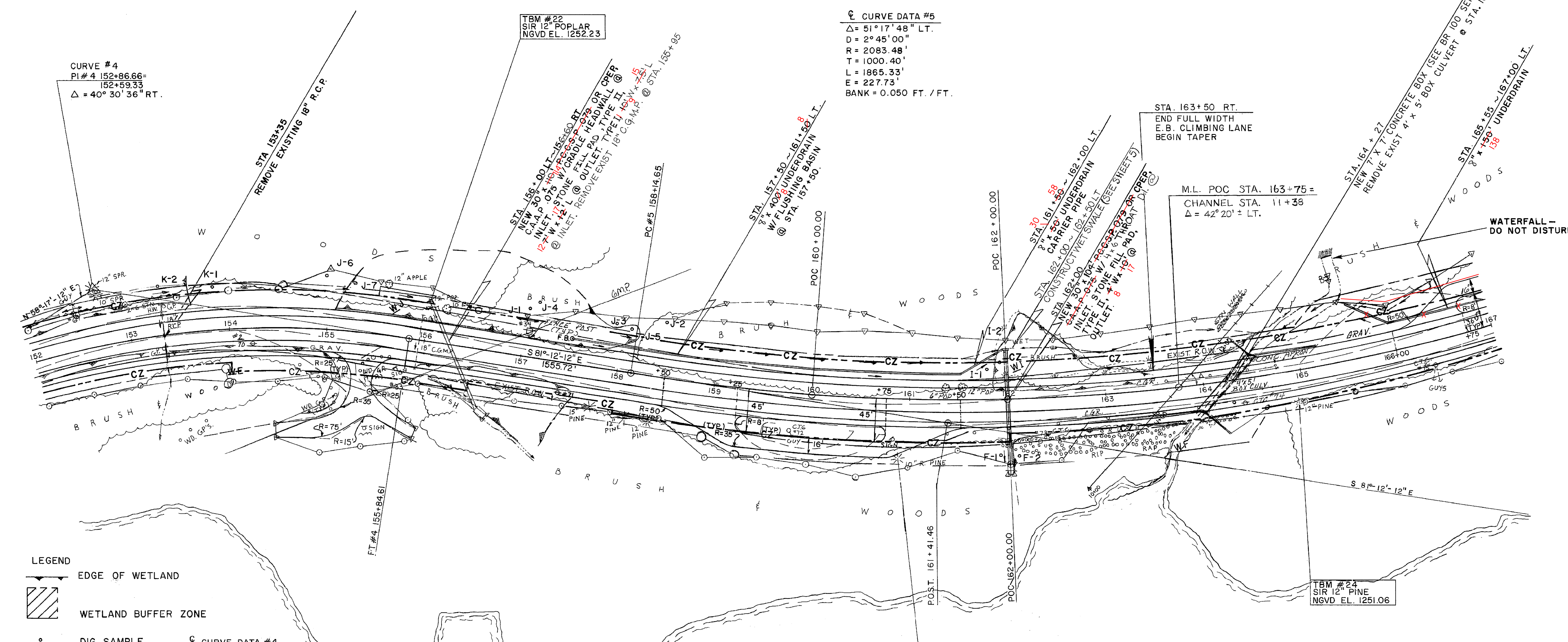
68162+69.4 ~ 162+98.1 RT.
163+90.8 ~ 164+19.5 RT. 21
23164+27.5 ~ 164+57.1 LT. 52
13165+17.7 ~ 165+47.1 LT. 43

REMOVAL AND DISPOSAL OF GUIDE POSTS

153+35 LT 1 EA.
155+00 RT 6 EA.
155+95 RT 1 EA.
155+95 LT 1 EA.

ANCHOR FOR STEEL BEAM RAIL

159+10 RT. 154+85 RT
161+03 ~ 161+06.9 RT. 155+04 RT
166+47.1 LT. 155+68 RT
166+12 LT 155+89 RT
161+43 RT
158+60 RT



LEGEND

EDGE OF WETLAND

WETLAND BUFFER ZONE

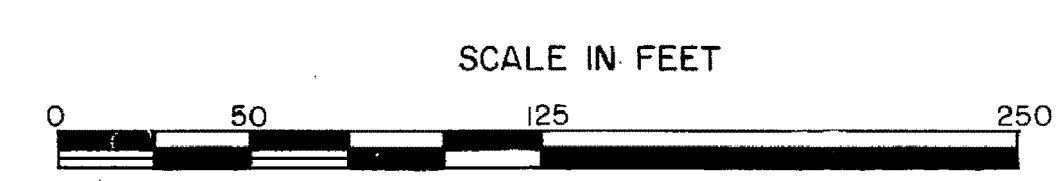
DIG SAMPLE

CZ CLEAR ZONE

CURVE DATA #4
 $\Delta = 40^\circ 30' 36''$ RT.
 $D = 6^\circ 30' 00''$
 $R = 881.47'$
 $T = 325.28'$
 $L = 623.23'$
 $E = 58.10'$
 BANK = 0.078 FT/FT

CURVE DATA #5
 $\Delta = 51^\circ 17' 48''$ LT.
 $D = 2^\circ 45' 00''$
 $R = 2083.48'$
 $T = 1000.40'$
 $L = 1865.33'$
 $E = 227.73'$
 BANK = 0.050 FT. / FT.

DATUM
 VERTICAL NGVD - 1929
 HORIZONTAL N/A



PROJECT NAME: CABOT-DANVILLE	PLOT DATE: 13-OCT-2010
PROJECT NUMBER: FECC F 028-3(26) C/1	DRAWN BY: I. SHEA
FILE NAME: d78d058frm.dgn	CHECKED BY: S. MENARD
PROJECT LEADER: K. ROBBE	SHEET 41 OF 250
DESIGNED BY: I. SHEA	
LAYOUT SHEET 5	