

CONSTRUCT DRIVES
T.H. 58 STA. 22+00 LT, 14' W

SCARIFYING PAVEMENT
+30 + 25 - 133 + 00

REMOVAL & DISPOSAL OF
EXIST. GUARD RAIL
125+65 ~ 138+00 RT.

CONSTRUCT T.H. 58 APPROACH
124 + 33.36 RT

BITUMINOUS CONCRETE CURB, TYPE A
123+00 ~ 124+00 RT.
130+75 ~ 134+50 RT.

GRUBBING MATERIAL
123+00 RT ~ T.H. 58 21+25 RT.
133+50 ~ 136+50 RT.

STEEL BEAM GUARD RAIL
123 + 00 RT. ~ T.H. 58, 21+25 RT.
125 + 92.5 ~ 138 + 00 RT.

SLOPE STABILIZATION
STONE FILL, TYPE II
LI, 126+25 ~ 129+75
RT, 123+00 ~ T.H. 58 21+25
128+75 ~ 138+00

MANUFACTURED TERMINAL SECTION, FLARED
125 + 55 ~ 125 + 92.5 RT.

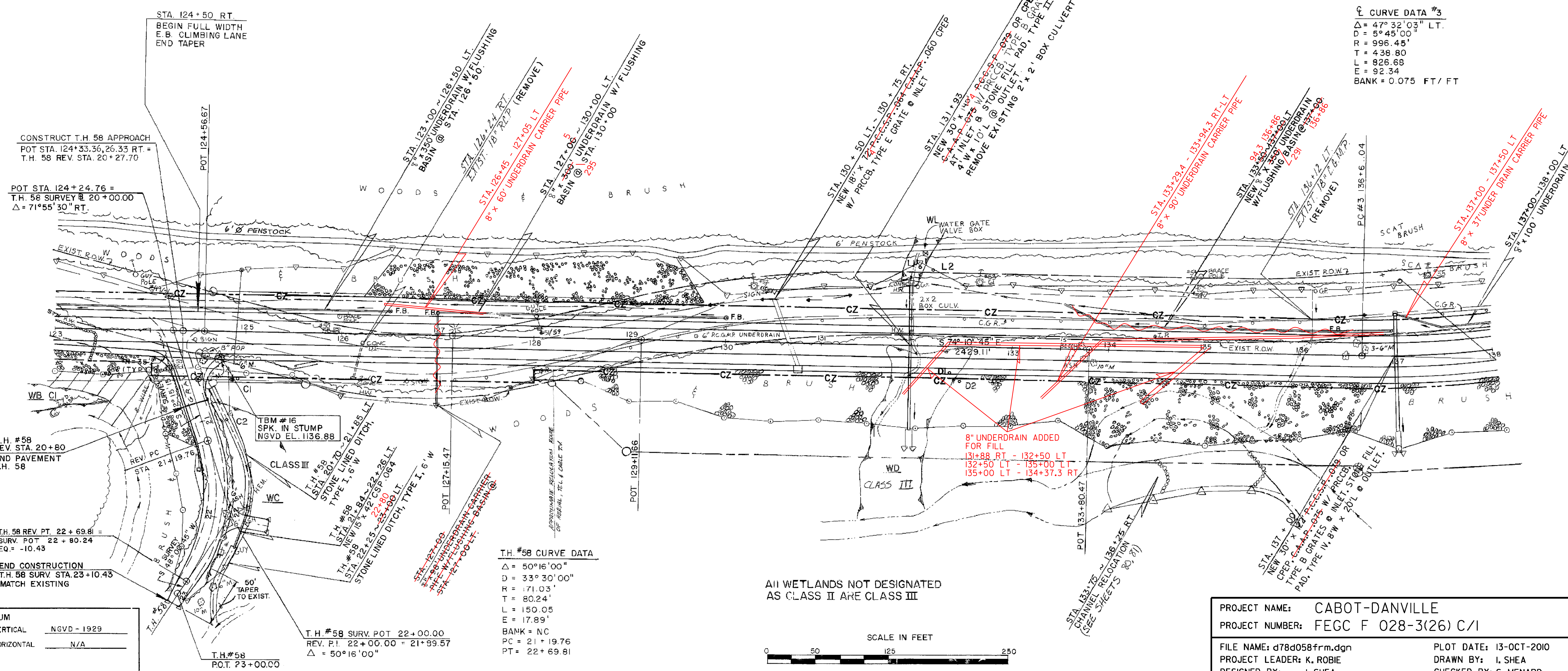
ANCHOR FOR STEEL BEAM RAIL
T.H. 58, 21+25 RT.
124+10 RT

PUB. RD. DIV. NO.	STATE	FED. AID PROJ. NO.	FISCAL YEAR	SHEET NO.	TOTAL SHEETS
1	VT				

LEGEND

- EDGE OF WETLAND
- WETLAND BUFFER ZONE
- DIG SAMPLE
- CLEAR ZONE

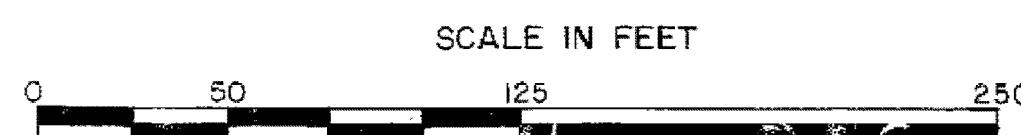
☺ CURVE DATA #3
 $\Delta = 47^\circ 32' 03''$ LT.
 $D = 5^\circ 45' 00''$ LT.
 $R = 996.45'$
 $T = 436.80$
 $L = 826.68$
 $E = 92.34$
 $BANK = 0.075$ FT/FT



T.H. #58 CURVE DATA

$\Delta = 50^\circ 16' 00''$
 $D = 33^\circ 30' 00''$
 $R = 171.03'$
 $T = 80.24'$
 $L = 150.05'$
 $E = 17.89'$
 $BANK = NC$
 $PC = 21 + 19.76$
 $PT = 22 + 69.81$

ALL WETLANDS NOT DESIGNATED AS CLASS II ARE CLASS III



DATUM
 VERTICAL NGVD - 1929
 HORIZONTAL N/A

T.H. #58
 REV. STA. 20+80
 END PAVEMENT
 T.H. 58

T.H. #58 REV. PT. 22+69.81 =
 SURV. POT 22+80.24
 EQ. = -10.43

END CONSTRUCTION
 T.H. 58 SURV. STA. 23+10.43
 MATCH EXISTING

T.H. #58
 POT. 23+00.00

T.H. #58 SURV. POT 22+00.00
 REV. P.I. 22+00.00 = 21+59.57
 $\Delta = 50^\circ 16' 00''$

PROJECT NAME: CABOT-DANVILLE
 PROJECT NUMBER: FECC F 028-3(26) C/1

FILE NAME: d78d058frm.dgn
 PROJECT LEADER: K. ROBBE
 DESIGNED BY: I. SHEA
 LAYOUT SHEET 3

PLOT DATE: 13-OCT-2010
 DRAWN BY: I. SHEA
 CHECKED BY: S. MENARD
 SHEET 37 OF 250