

REMOVAL & DISPOSAL OF EXIST. GUARD RAIL

112+31 ~ 115+71 RT.

SCARIFYING PAVEMENT

110+00 ~ 113+00

SLOPE STABILIZATION STONE FILL, TYPE II

LT.

RT.

117+75 ~ 123+00  
113+65 ~ 113+90  
114+65 ~ 115+15

CONSTRUCT DRIVES

LT. 110+33, 20' W  
113+65, 14' W  
ASKEWED 36° 30' 00" LT.  
W/ 14' W X 20' L TURNAROUND

RT. 117+00 8' 16' W  
113+30, 20' W

BITUMINOUS CONCRETE CURB, TYPE A

RT. 121+40 ~ 123+00

PUB. RD. DIV. NO.	STATE	FED. AID PROJ. NO.	FISCAL YEAR	SHEET NO.	TOTAL SHEETS
1	VT				

STEEL BEAM GUARD RAIL

113+40 ~ 115+00 RT.  
117+08 ~ 123+00 RT.  
110+00 ~ 113+20 RT.

GRANITE SLOPE EDGING

115+85 ~ 116+85 RT. (4" REVEAL)  
116+25

REMOVAL AND DISPOSAL OF GUIDE POSTS

113+80 RT.

RELOCATE MAILBOX, SINGLE SUPPORT

113+75 114+34 LT.  
116+35 RT.  
25

MANUFACTURED TERMINAL SECTION, FLARED

115+47.5 ~ 115+85 RT.

GRUBBING MATERIAL

117+75 ~ 123+00 RT.  
113+65 ~ 113+90  
114+65 ~ 115+15

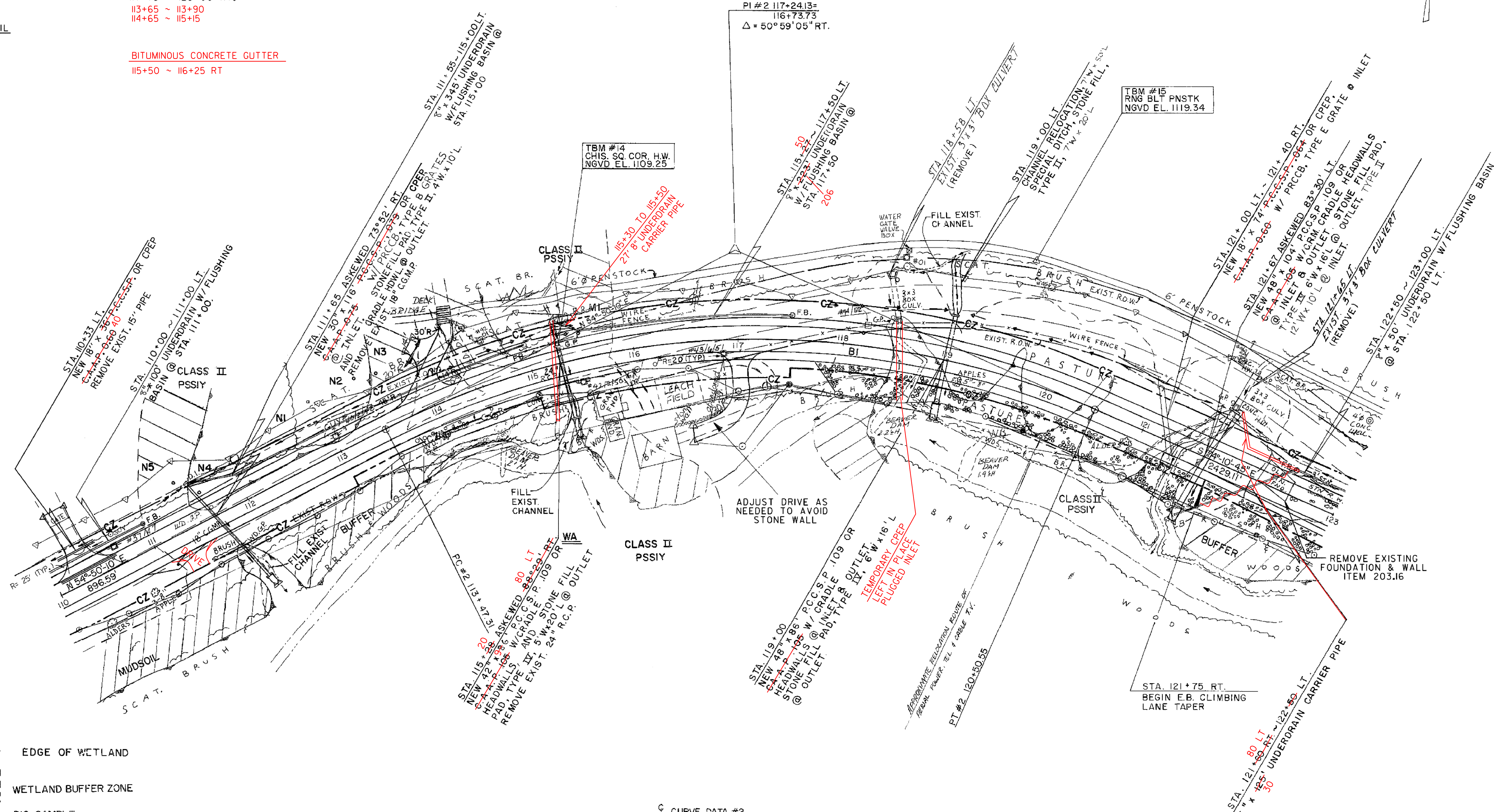
ANCHOR FOR STEEL BEAM RAIL

117+08 RT.  
113+17.5 RT.  
113+52.5 RT.

BITUMINOUS CONCRETE GUTTER

115+50 ~ 116+25 RT.

CURVE #2  
PI #2 117+24.13=  
116+73.73  
Δ = 50° 59' 05" RT.



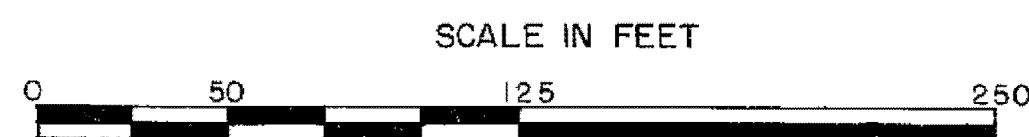
LEGEND

- EDGE OF WETLAND
- WETLAND BUFFER ZONE
- DIG SAMPLE
- CLEAR ZONE

DATUM

VERTICAL	NGVD - 1929
HORIZONTAL	N/A

☉ CURVE DATA #2  
Δ = 50° 59' 05" RT.  
D = 7° 15' 00"  
R = 790.29'  
T = 376.82'  
L = 703.24'  
E = 85.24'  
BANK = 0.080 FT. / FT.



PROJECT NAME: CABOT-DANVILLE  
PROJECT NUMBER: FECC F 028-3(26) C/1  
FILE NAME: d78d058frm.dgn  
PROJECT LEADER: K. ROBBE  
DESIGNED BY: I. SHEA  
LAYOUT SHEET 2

PLOT DATE: 13-OCT-2010  
DRAWN BY: I. SHEA  
CHECKED BY: S. MENARD  
SHEET 35 OF 250