

REMOVAL & DISPOSAL OF EXIST. GUARD RAIL  
 161+65 ~ 164+28 RT.  
 163+63 ~ 164+77 LT.

STEEL BEAM GUARD RAIL  
 161+50 ~ 167+00 RT.  
 162+00 ~ 164+87.5 RT.  
 165+47.5 ~ 169+10 RT.

BREAKAWAY CABLE TERMINAL  
 161+25 ~ 161+50 RT.

CONSTRUCT DRIVES  
 LT. RT.  
 158+41, 18' W.

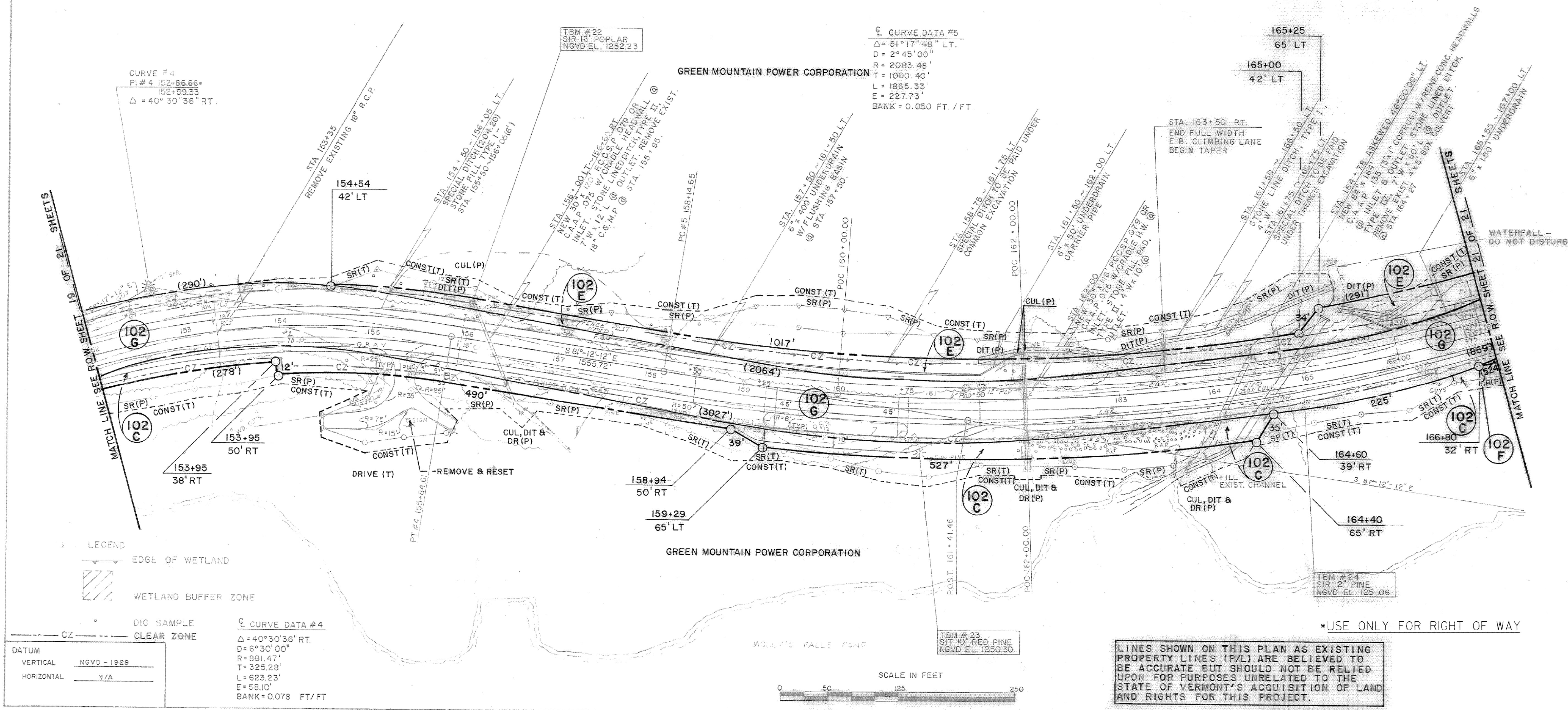
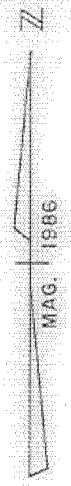
CONSTRUCT TURNOUT  
 158+50 ~ 161+50 RT., 16' W.  
 166+00 ~ 167+00 LT., 16' W.

SCARIFYING PAVEMENT  
 152+25 ~ 156+50

EROSION MATTING  
 LT. RT.  
 156+05 ~ 155+50  
 161+00 ~ 161+50

DRILLING & BLASTING OF SOLID ROCK SUBGRADE  
 157+25 ~ 161+25 LT.

PUB. REF. DIV. NO.	STATE	FED. AID PROJ. NO.	FISCAL YEAR	SHEET NO.	TOTAL SHEETS
1	VT				



PROJECT NAME: CABOT-DANVILLE  
 PROJECT NUMBER: FECC F 028-3(26) C/1  
 FILE NAME: d78d058frm.dgn  
 PROJECT LEADER: K. ROBBE  
 DESIGNED BY: I. SHEA  
 ROW LAYOUT SHEET 5  
 PLOT DATE: 13-OCT-2010  
 DRAWN BY: I. SHEA  
 CHECKED BY: S. MENARD  
 SHEET 29 OF 250