

DECIDUOUS SHRUBS
 142+90 ~ 143+70 LT, 10' C-C
 (IN 2 ROWS 20' APART, 3 ~ 4' HT.)
 ALTERNATE PLANTINGS OF:
 WINTERBERRY HOLLY - 2 EA
 SHADBUSH - 2 EA
 AMERICAN CRANBERRY - 2 EA
 NANNYBERRY - 2 EA

REMOVAL & DISPOSAL
 EXIST. GUARD RAIL
 138+00 LT. ~ 144+71 RT.

STEEL BEAM GUARD RAIL
 138+00 ~ 144+30 RT.
 142+62.5 ~ 152+00 RT.

BREAKAWAY CABLE TERMINAL
 144+30 ~ 144+55 RT.

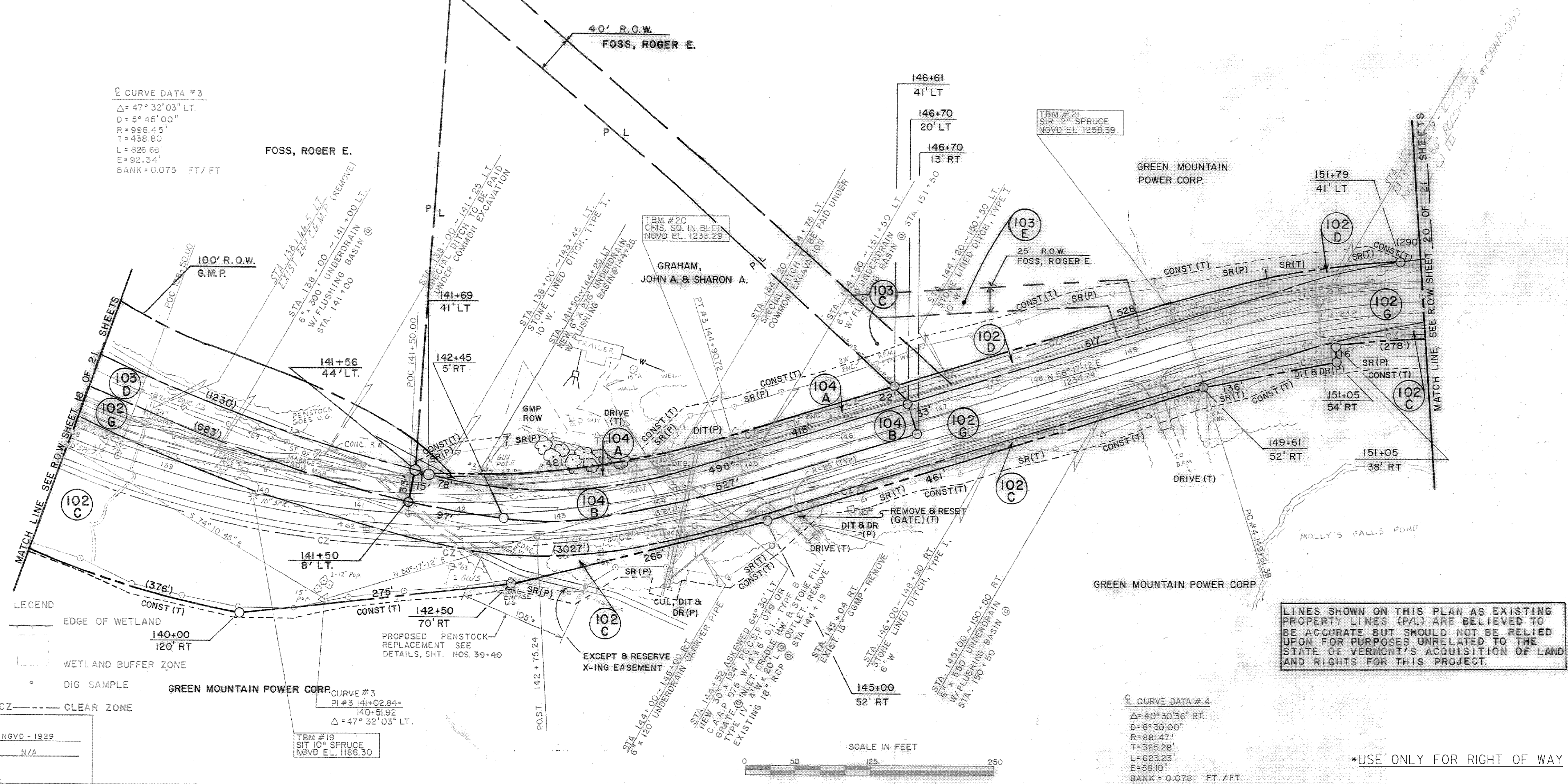
CONSTRUCT DRIVES
 LT. RT.
 144+06, 14' W 145+04, 14' W. (ASKEWED 66° 14' RT.)
 (ASKEWED 66° 30' RT) 149+12, 14' W.

PENSTOCK REPLACEMENT
 142+20 ~ 143+15 RT.

EROSION MATTING
 LT.
 150+50 ~ 151+00

| PUB. NO. | STATE | FED. AID PROJ. NO. | FISCAL YEAR | SHEET NO. | TOTAL SHEETS |
|----------|-------|--------------------|-------------|-----------|--------------|
| 1 | VT | | | | |

⊙ CURVE DATA #3
 Δ = 47° 32' 03" LT.
 D = 5° 45' 00"
 R = 896.45'
 T = 438.80'
 L = 826.68'
 E = 92.34'
 BANK = 0.075 FT./FT.



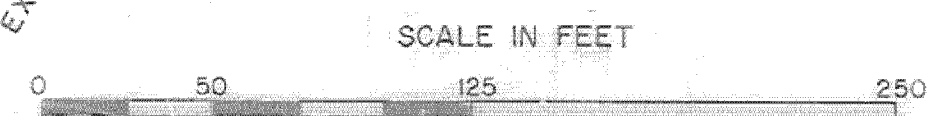
LEGEND
 --- EDGE OF WETLAND
 --- WETLAND BUFFER ZONE
 ○ DIG SAMPLE
 --- CZ --- CLEAR ZONE

DATUM
 VERTICAL NGVD - 1929
 HORIZONTAL N/A

GREEN MOUNTAIN POWER CORP.
 CURVE #3
 PI #3 141+02.84 =
 140+51.92
 Δ = 47° 32' 03" LT.

TBM #19
 SIT 10" SPRUCE
 NGVD EL. 1186.30

LINES SHOWN ON THIS PLAN AS EXISTING
 PROPERTY LINES (P.L.) ARE BELIEVED TO
 BE ACCURATE BUT SHOULD NOT BE RELIED
 UPON FOR PURPOSES UNRELATED TO THE
 STATE OF VERMONT'S ACQUISITION OF LAND
 AND RIGHTS FOR THIS PROJECT.



⊙ CURVE DATA #4
 Δ = 40° 30' 36" RT.
 D = 6° 30' 00"
 R = 881.47'
 T = 325.25'
 L = 623.23'
 E = 58.10'
 BANK = 0.075 FT./FT.

*USE ONLY FOR RIGHT OF WAY

PROJECT NAME: CABOT-DANVILLE
 PROJECT NUMBER: FECC F 028-3(26) C/1
 FILE NAME: d78d058frm.dgn
 PROJECT LEADER: K. ROBBE
 DESIGNED BY: I. SHEA
 ROW LAYOUT SHEET 4
 PLOT DATE: 13-OCT-2010
 DRAWN BY: BRYAN ASSOC.
 CHECKED BY: S. MENARD
 SHEET 28 OF 250