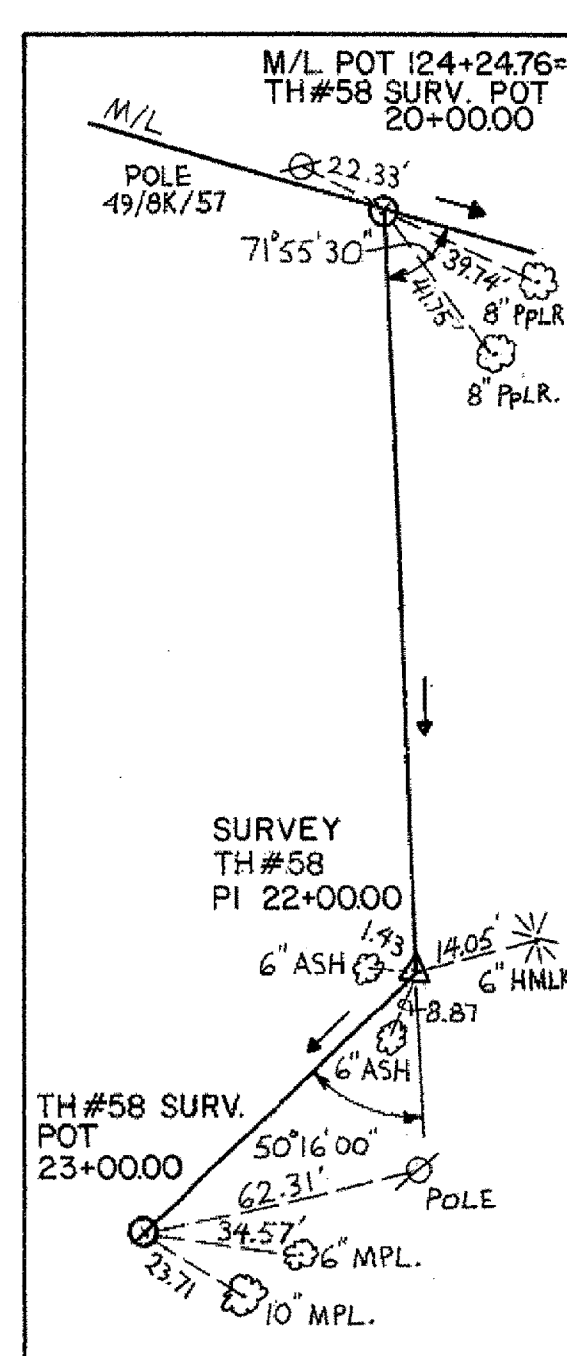
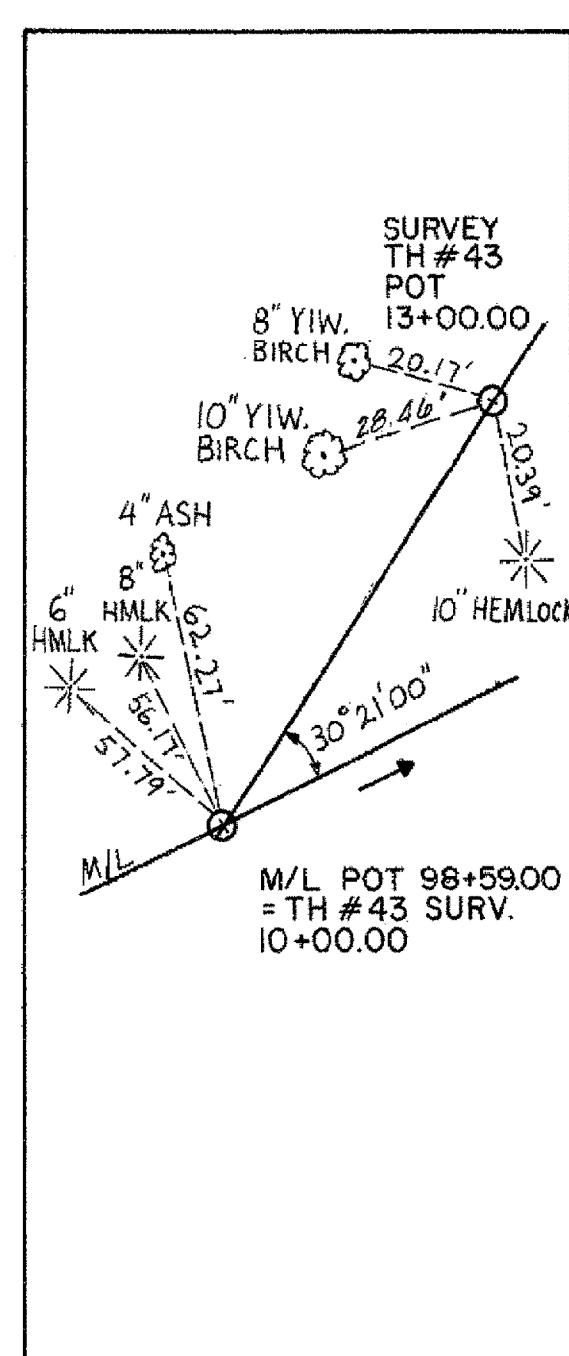
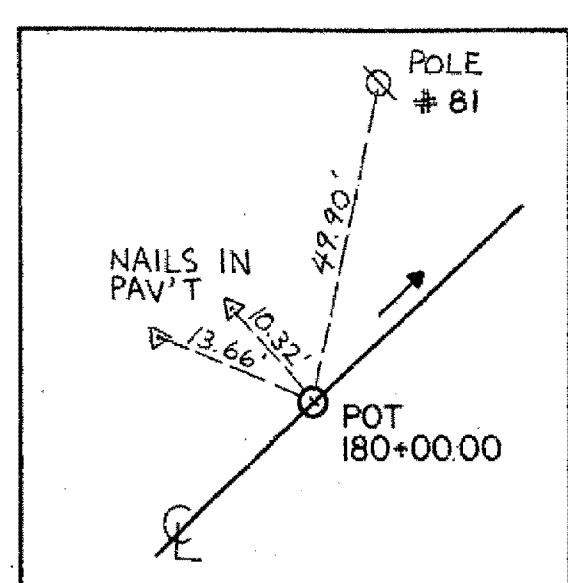
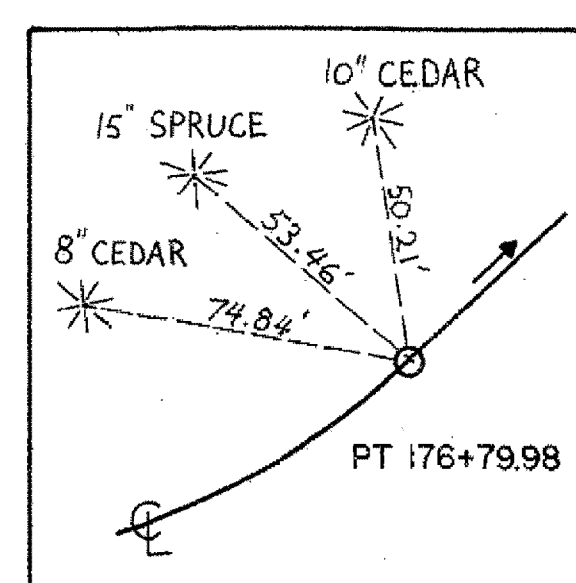
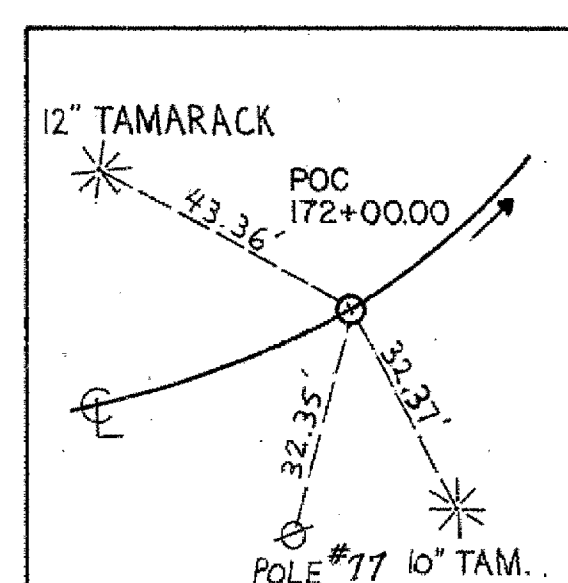
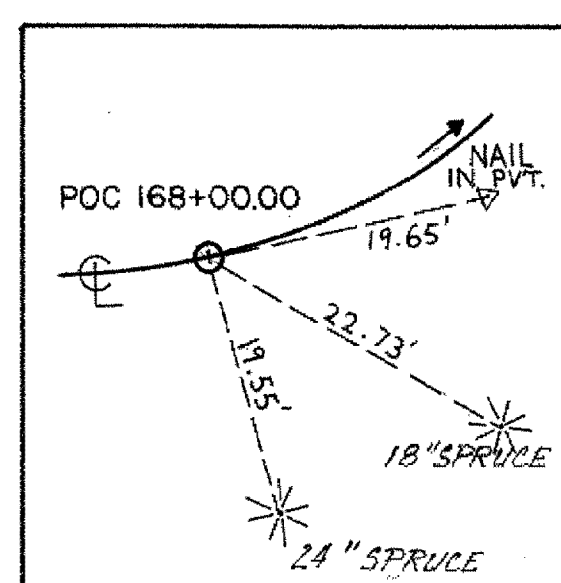
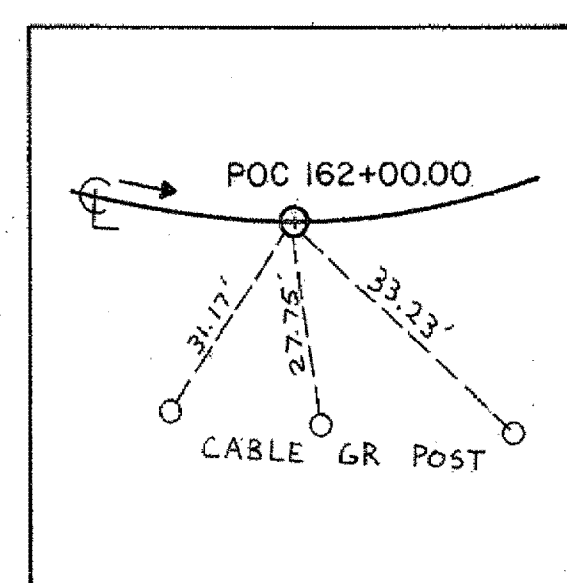
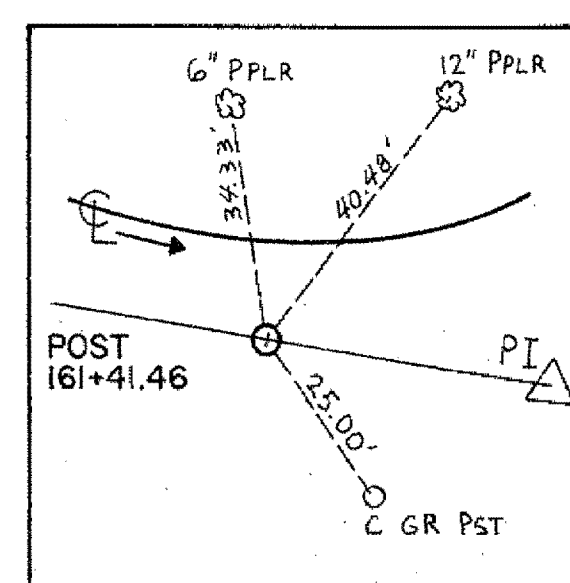
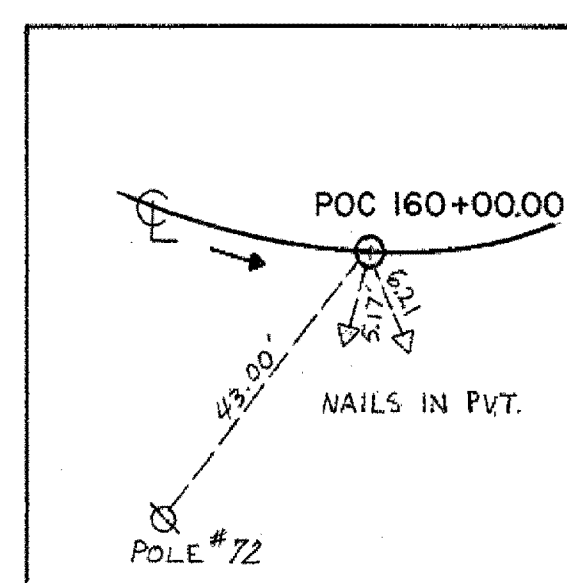
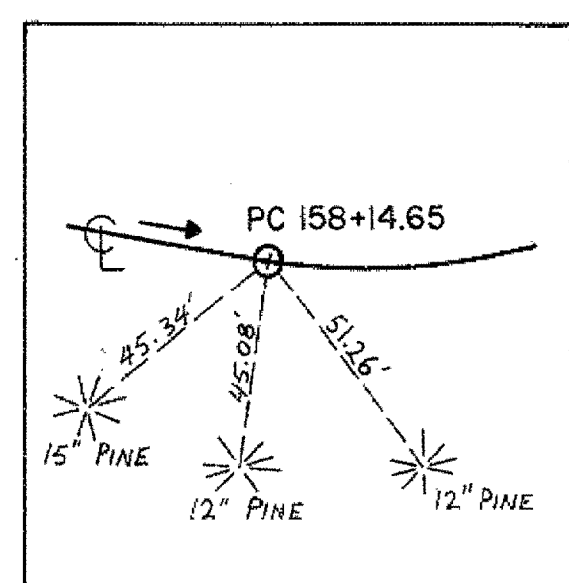
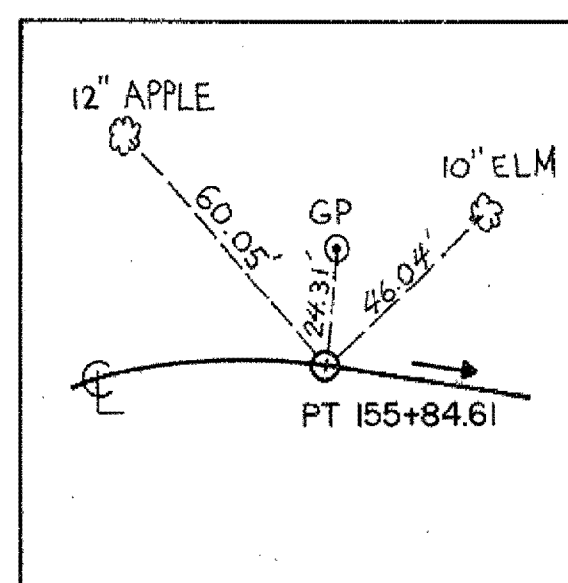
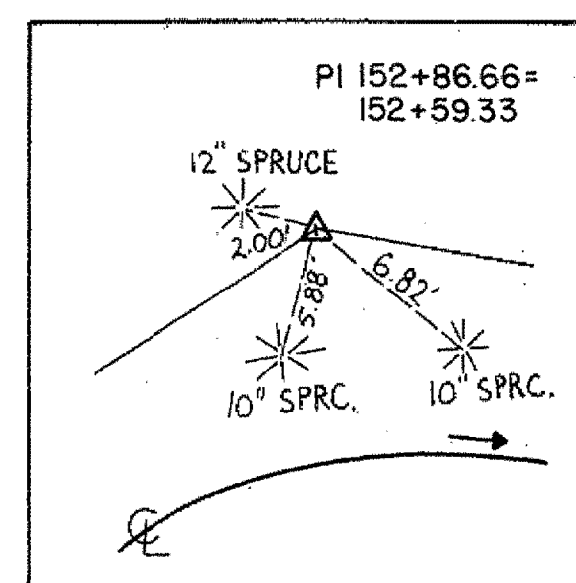
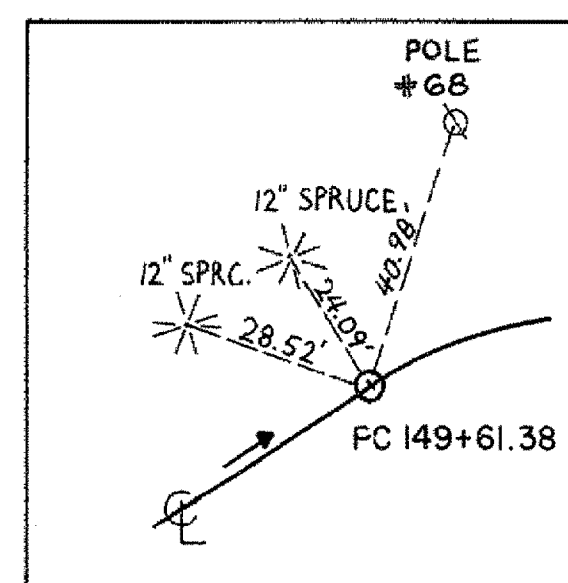
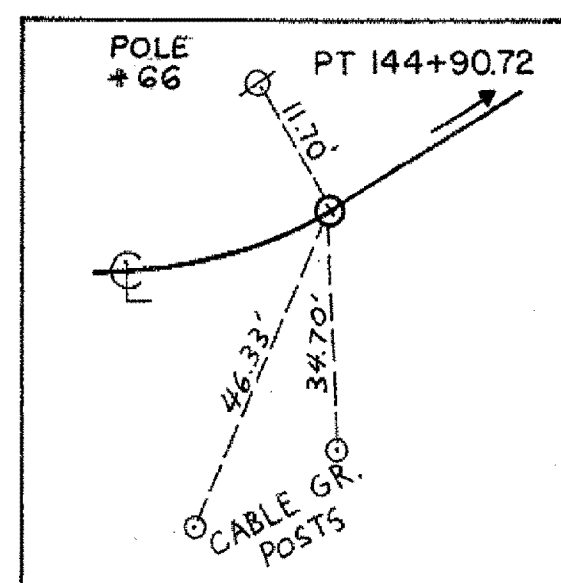
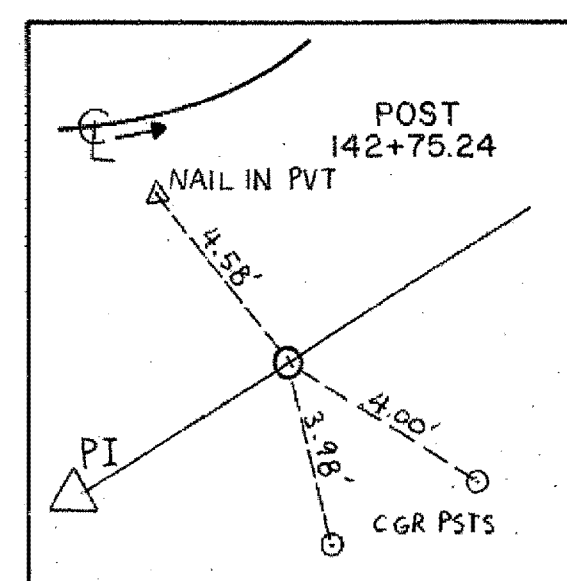
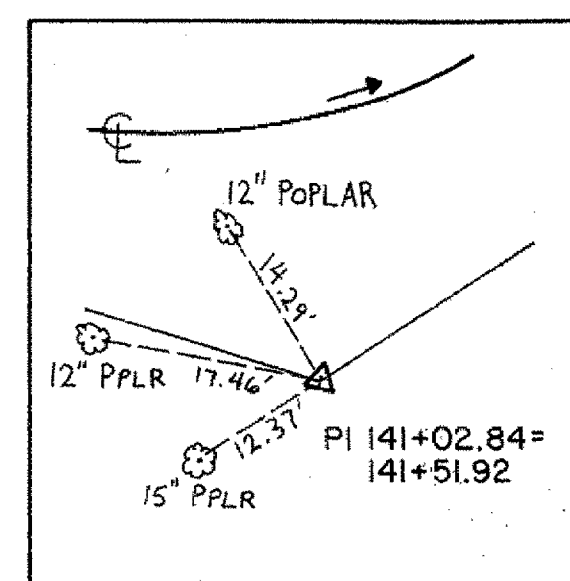
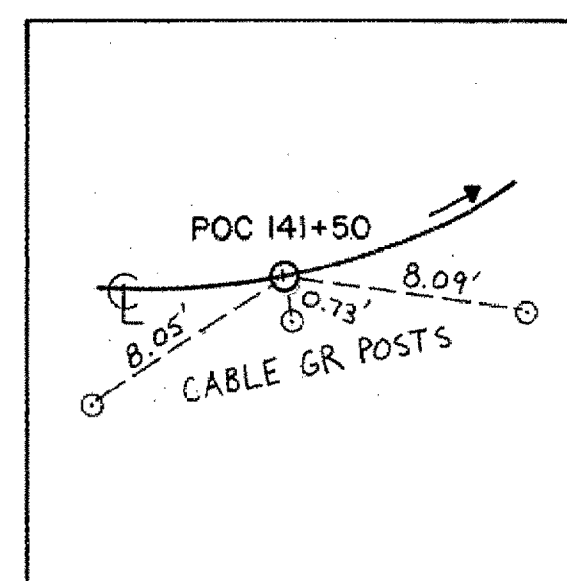
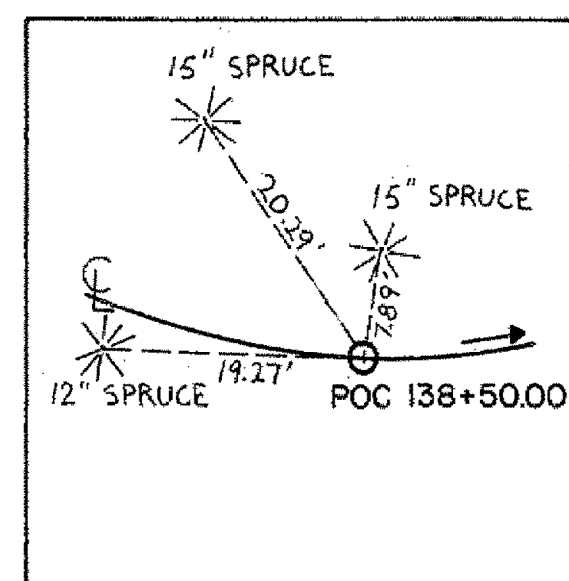
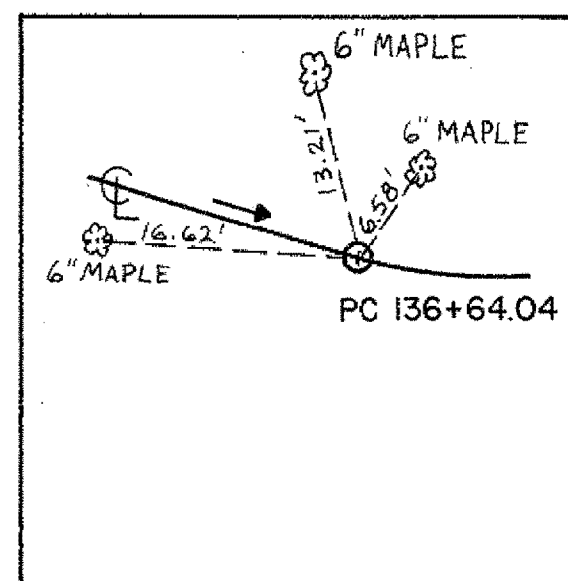
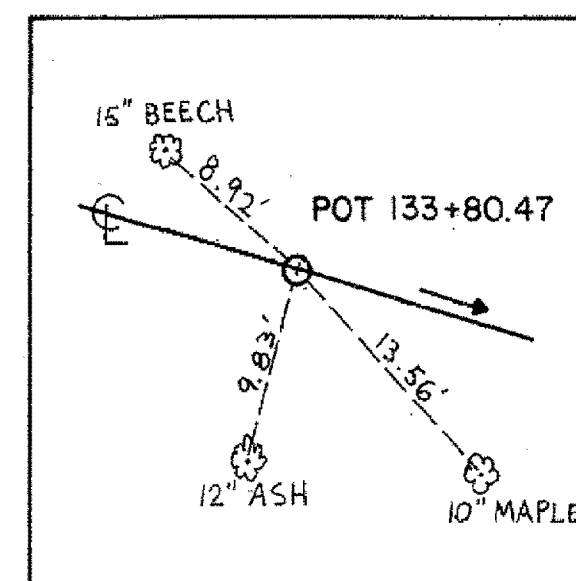
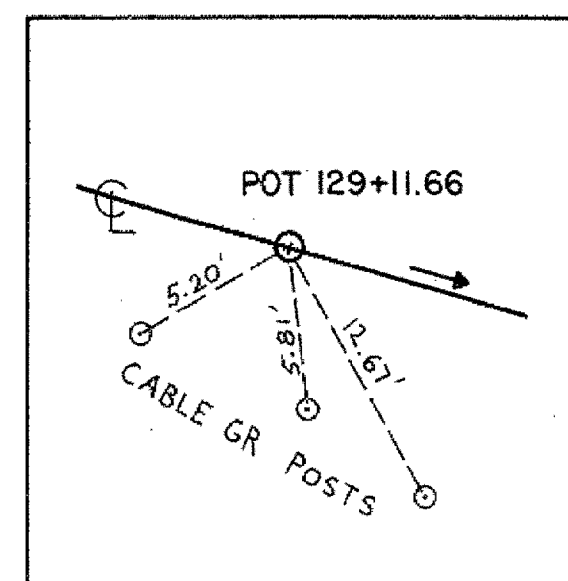
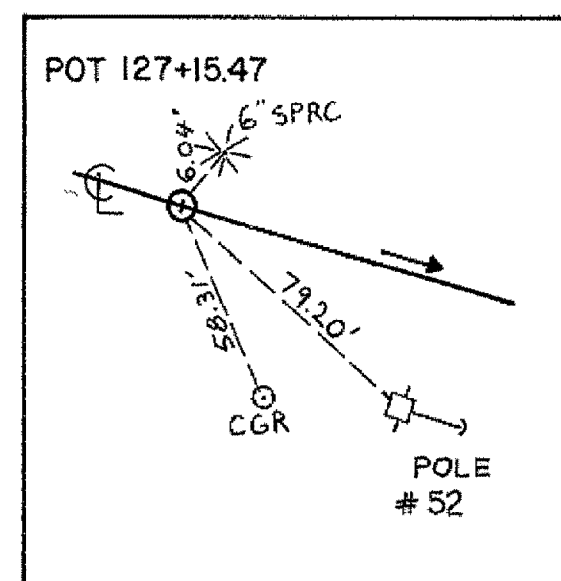
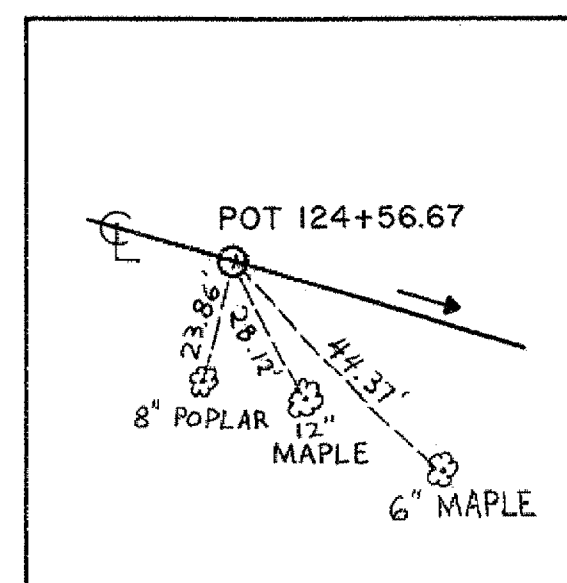
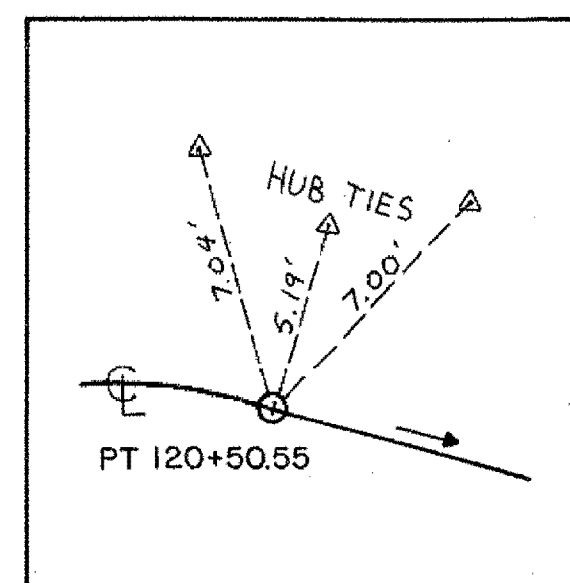
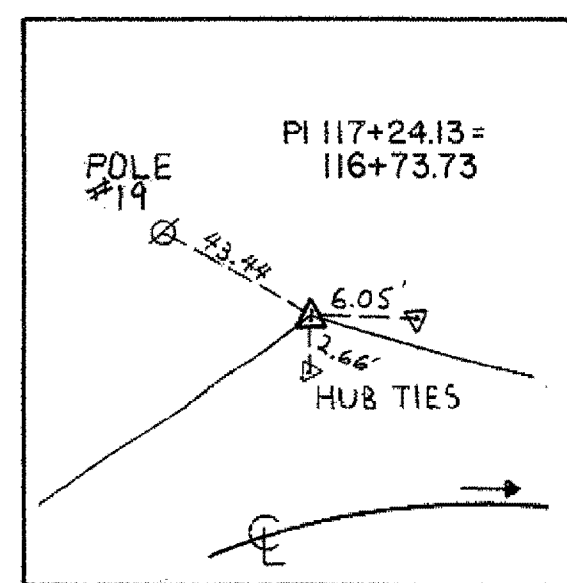
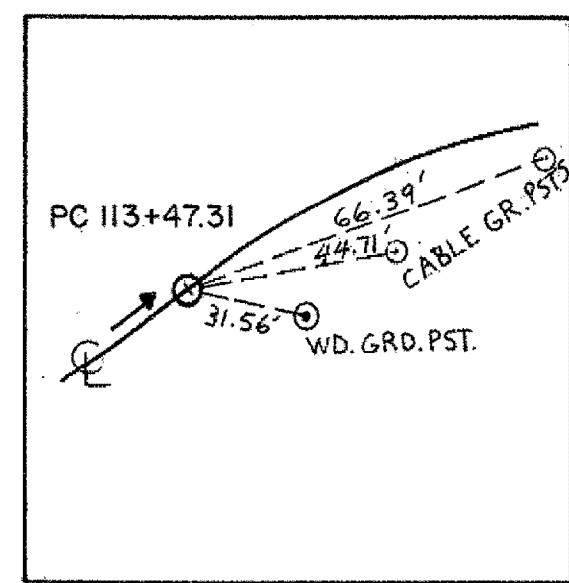
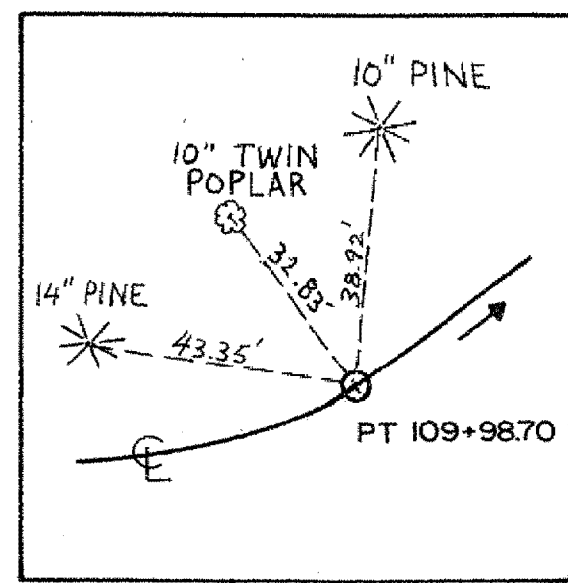
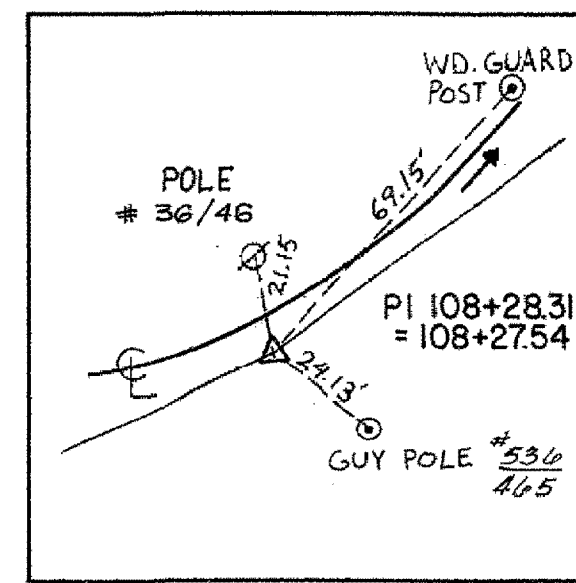
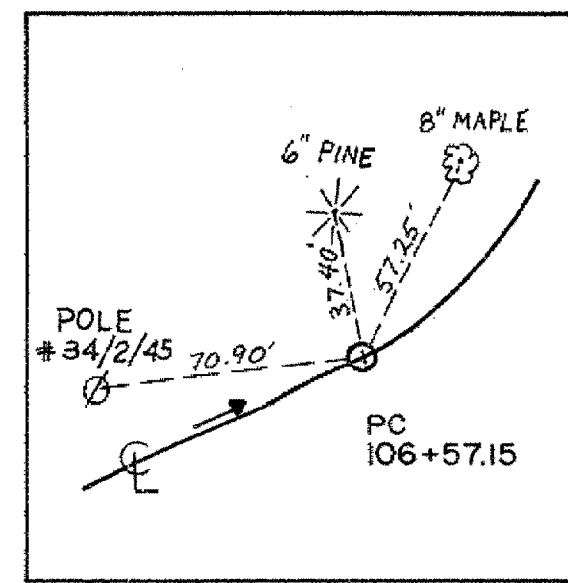
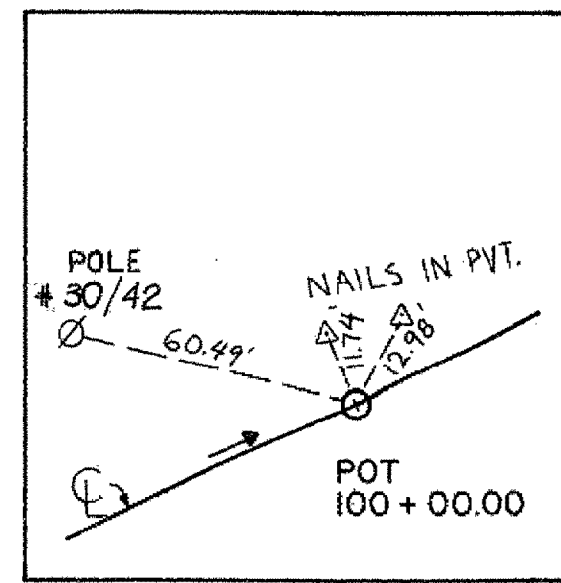


NORTH COMMON TO ALL INSERTS
MAG. 1986



NOTE: NOT TO SCALE

PROJECT NAME: CABOT-DANVILLE
 PROJECT NUMBER: FECC F 028-3(26) C/1
 FILE NAME: d78d058frm.dgn
 PLOT DATE: 13-OCT-2010
 PROJECT LEADER: K. ROBE
 DRAWN BY: I. SHEA
 DESIGNED BY: I. SHEA
 CHECKED BY: S. MENARD
 BASE LINE TIE DATA SHEET
 SHEET 8 OF 250