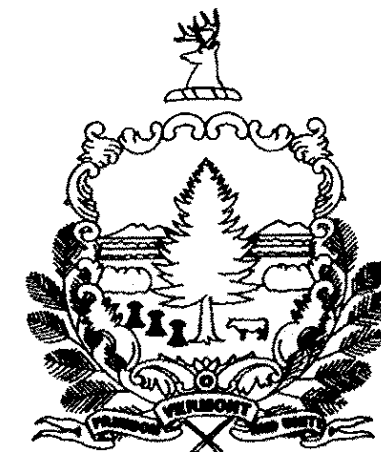


STATE OF VERMONT AGENCY OF TRANSPORTATION



INDEX OF SHEETS
SEE SHEET 2

RECORD PLANS

CONTRACTOR: WINTERSET, INC. - LYNDONVILLE, VT
 RESIDENT ENGINEER: JON DAY
 CONSTRUCTION BEGAN: APRIL 22, 2011
 CONSTRUCTION COMPLETE: DECEMBER 4, 2013
 RECORD PLANS BY: JON DAY & C. PIERCE

I HEREBY CERTIFY THAT ALL THE CONSTRUCTION REQUIRED BY THIS SET OF DRAWINGS HAS BEEN ACCOMPLISHED AS INDICATED HEREIN.

BY Jon P. Day RESIDENT ENGINEER
 DATE 05-12-14

NOTE: Any further information concerning final quantities, amounts or other details relative to this project may be found at Central Files in the electronic archives.

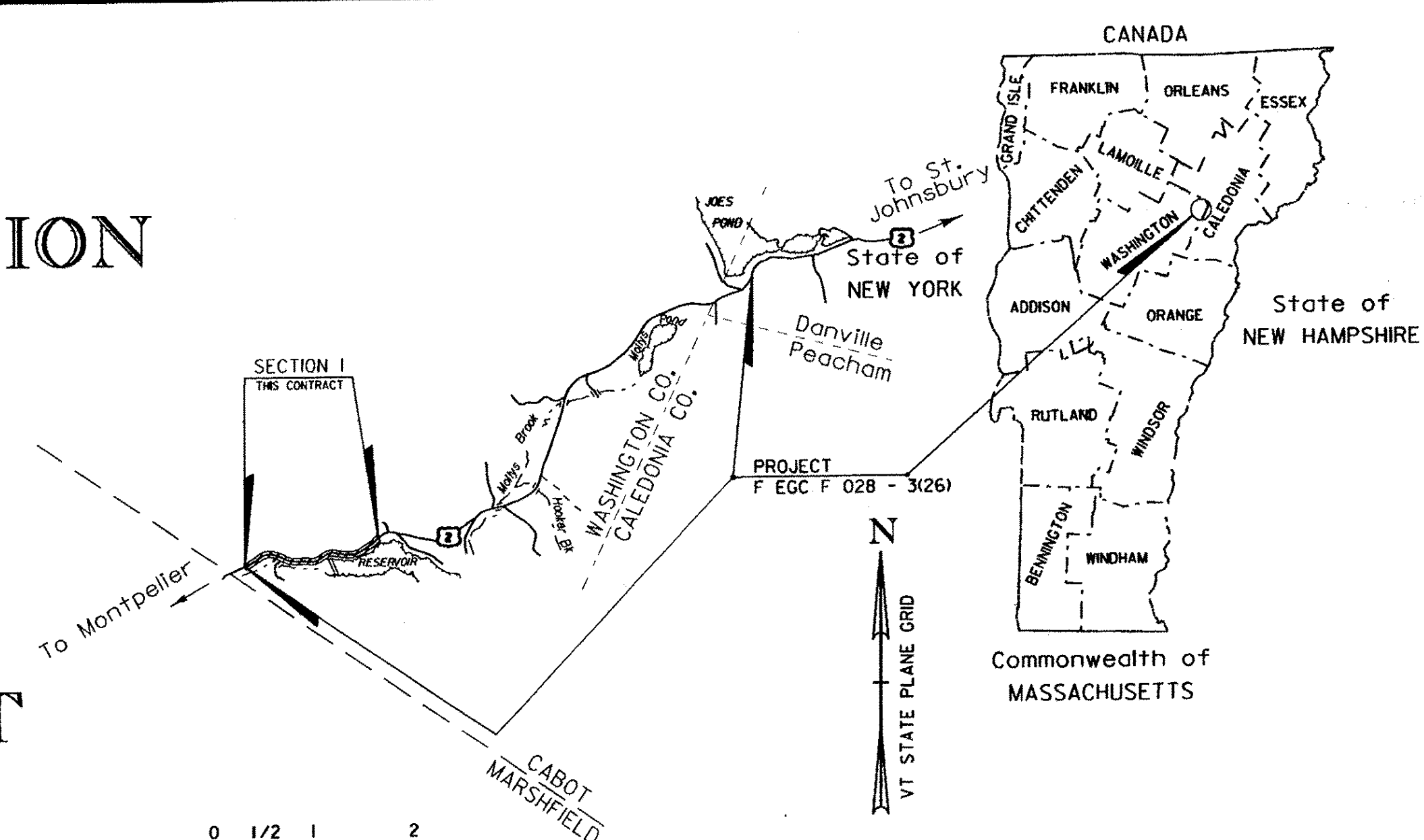
PROPOSED IMPROVEMENT TOWNS OF CABOT AND EAST MONTPELIER COUNTY OF WASHINGTON U.S. ROUTE 2 PRINCIPAL ARTERIAL

ROADWAY LOCATION: BEGINNING AT A POINT ON U.S. ROUTE 2, IN THE TOWN OF CABOT, APPROXIMATELY 0.042 MILES EASTERLY OF THE MARSHFIELD - CABOT TOWN LINE AND EXTENDING IN AN EASTERLY DIRECTION APPROXIMATELY 1.458 MILES.

LENGTH OF ROADWAY 7700.00 FEET = 1.458 MILES
 LENGTH OF PROJECT 7700.00 FEET = 1.458 MILES

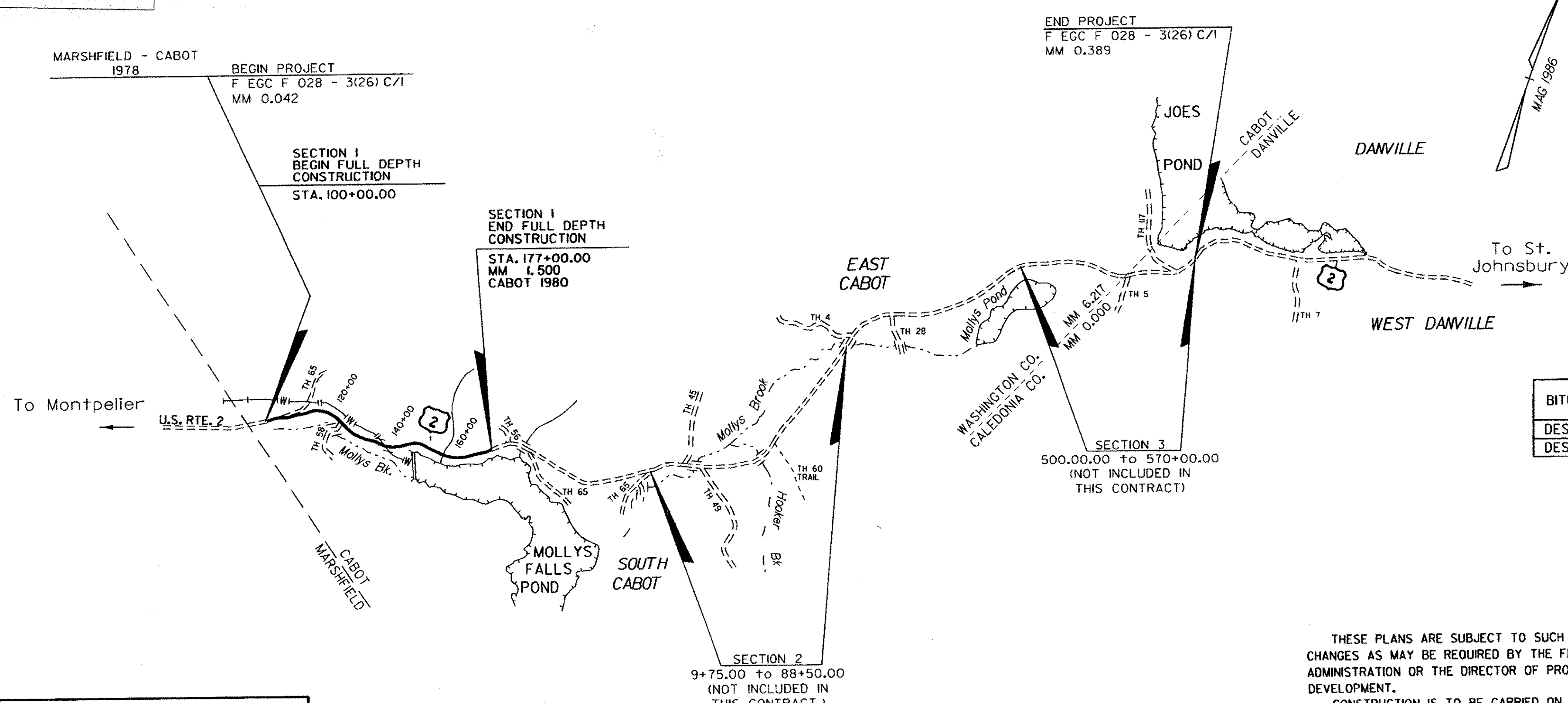
MITIGATION LOCATION: LOCATED IN THE TOWN OF EAST MONTPELIER ON COBURN ROAD, NEAR THE PLAINFIELD TOWN LINE, A 35.5 ACRE SITE WEST OF US ROUTE 2 AND BOUNDED ON THE WEST BY THE WINOOSKI RIVER.

PROJECT DESCRIPTION: PROJECT INVOLVES RECONSTRUCTION AND WIDENING OF A PORTION OF U.S. ROUTE 2, INCLUDING GRADING, DRAINAGE, SUBBASE, PAVEMENT, RELATED WORK, PENSTOCK REPLACEMENT, STREAM RELOCATION, PRECAST BOX CULVERT AND WETLAND MITIGATION SITE.



TRAFFIC DATA

2010 AADT	= 3500
2030 AADT	= 4200
2030 DHV	= 470
2030 ADTT	= 640
D	= 56%
T	= 12%
V	= 50 mph
2010 - 2030 ESAL'S	= 2,614,000 (DESIGN LANE)
2010 - 2050 ESAL'S	= 6,091,000 (DESIGN LANE)



BITUMINOUS CONCRETE SUPERPAVE MIXTURE DESIGN CRITERIA

DESIGN LANE/DESIGN LIFE ESAL	1,463,840
DESIGN NUMBER OF GYRATIONS	65

QUALITY ASSURANCE PROGRAM: LEVEL 1

CONVENTIONAL SYMBOLS

COUNTY LINE	
TOWN LINE	
LIMITS OF ACCESS	
POINT OF ACCESS	
FENCE LINE	
STONE WALL	
TRAVELED WAY	
GUARD RAIL	
RAILROAD	
SURVEY LINE	
CULVERT	
POWER POLE	
TELEPHONE POLE	
TREES	
CONTROL OF ACCESS	
PROPERTY LINE	
R.O.W. TAKING LINE	
SLOPE RIGHTS	
TOP OF CUT	
TOE OF SLOPE	

SURVEYED BY : VT SURVEY CONSULTANTS
 SURVEYED DATE : APRIL, 1986

DATUM
 VERTICAL NGVD - 1929
 HORIZONTAL N/A

THESE PLANS ARE SUBJECT TO SUCH ENGINEERING CHANGES AS MAY BE REQUIRED BY THE FEDERAL HIGHWAY ADMINISTRATION OR THE DIRECTOR OF PROGRAM DEVELOPMENT.

CONSTRUCTION IS TO BE CARRIED ON IN ACCORDANCE WITH THESE PLANS AND THE STANDARD SPECIFICATIONS FOR CONSTRUCTION DATED 2006, AS APPROVED BY THE FEDERAL HIGHWAY ADMINISTRATION ON JUNE 15, 2006 FOR USE ON THIS PROJECT, INCLUDING ALL SUBSEQUENT REVISIONS AND SUCH REVISED SPECIFICATIONS AND SPECIAL PROVISIONS AS ARE INCORPORATED IN THESE PLANS.

DIRECTOR OF PROGRAM DEVELOPMENT
 APPROVED: Richard J. Starnick DATE 11/15/10

PROJECT MANAGER : KEN ROBE

PROJECT NAME : CABOT - DANVILLE
 PROJECT NUMBER : F EGC F 028 - 3(26) C/1

SHEET 1 OF 250 SHEETS