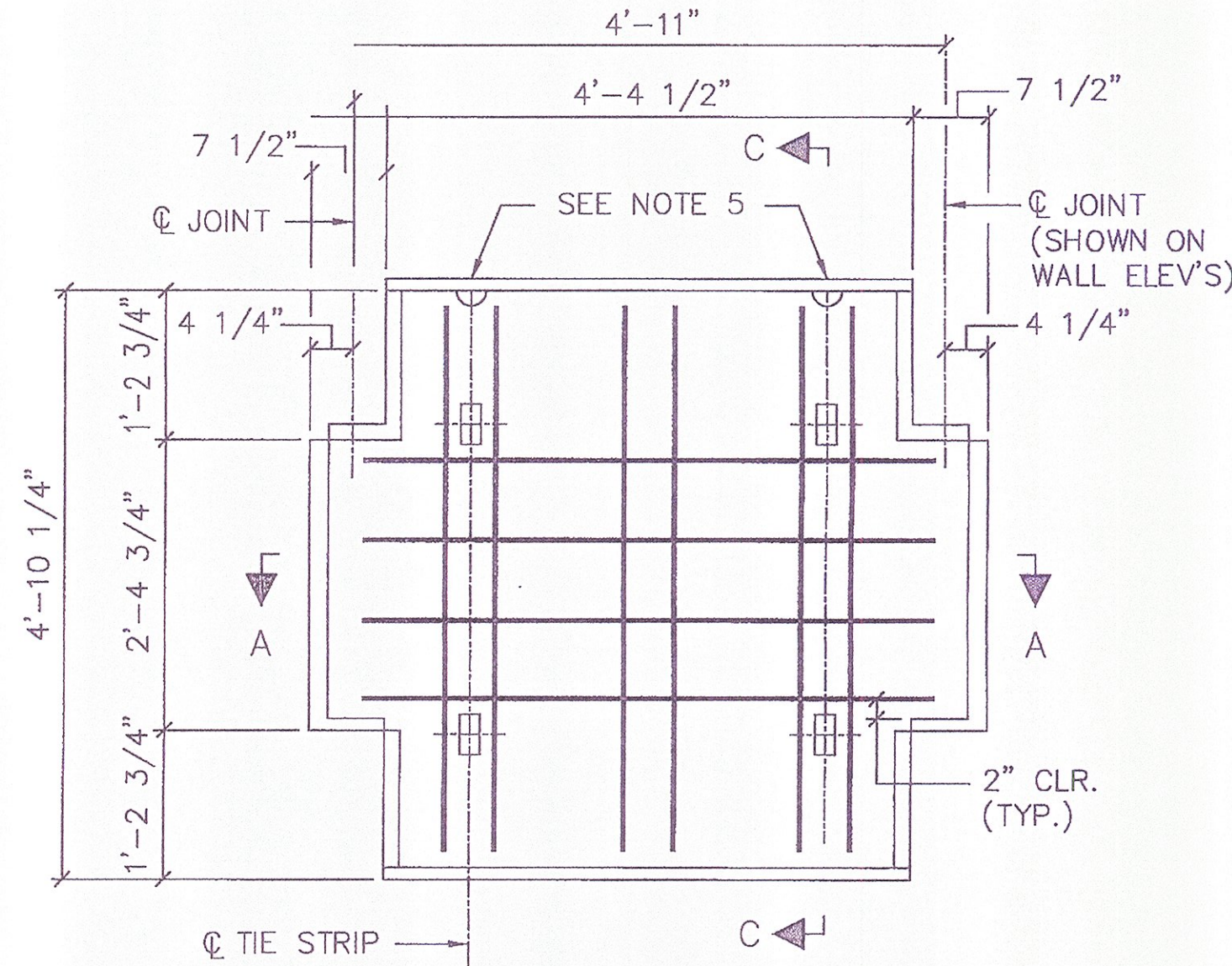
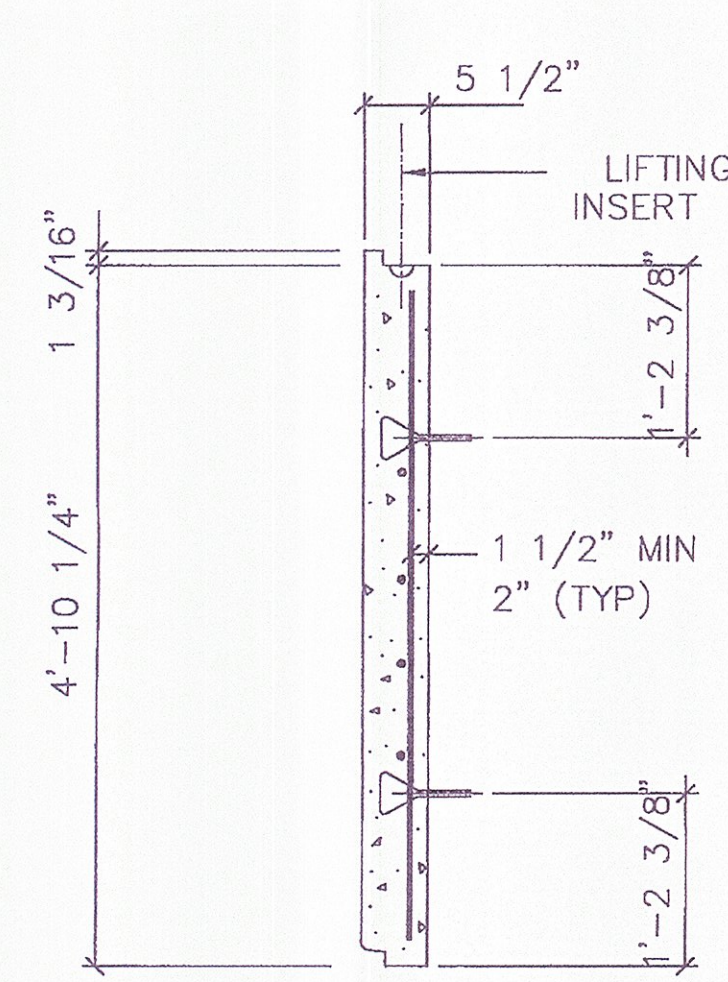


**NOTE:**  
STRIPS OF FILTER CLOTH SHALL BE PLACED ON BACK FACE OF PANEL OVER PANEL JOINTS. FILTER CLOTH SHALL BE ADHERED TO BACK FACE OF PANELS USING AN ADHESIVE COMPOUND SUPPLIED BY THE REINFORCED EARTH COMPANY. ADHESIVE SHALL BE APPLIED TO PANEL AND THEN FILTER CLOTH SHALL BE APPLIED TO PANEL.

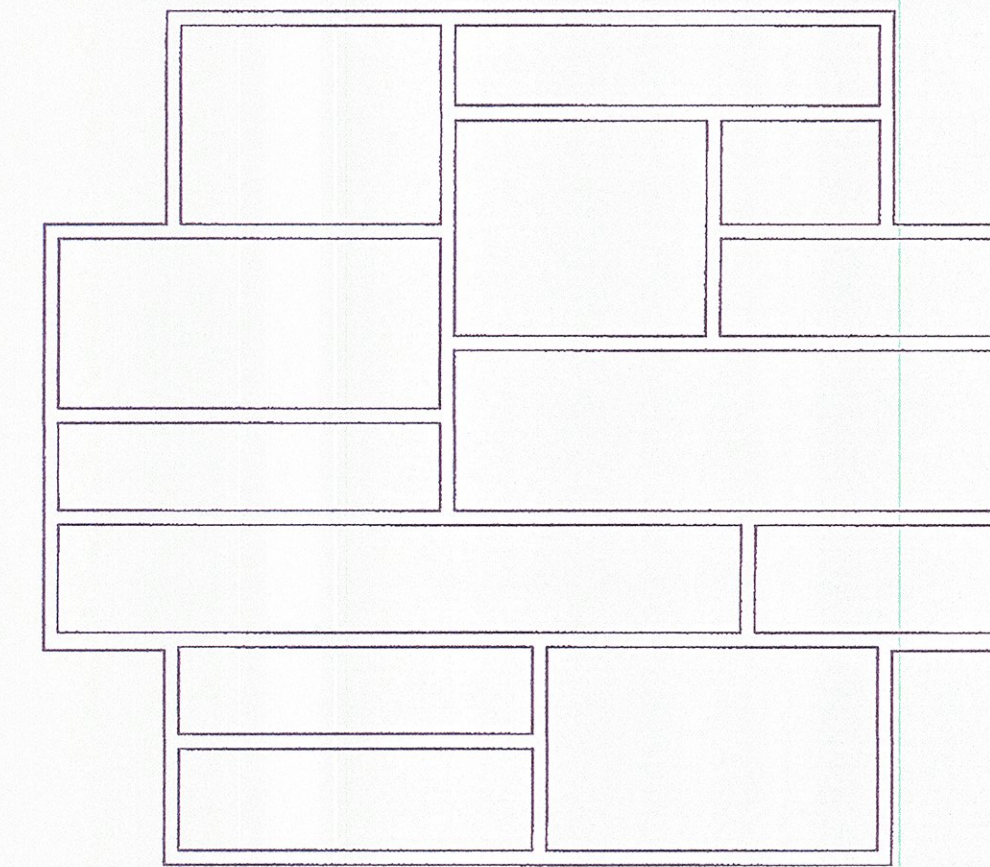
**FILTER CLOTH DETAIL**  
**PARTIAL ELEVATION - BACK FACE**  
SCALE: 3/16" = 1'-0"



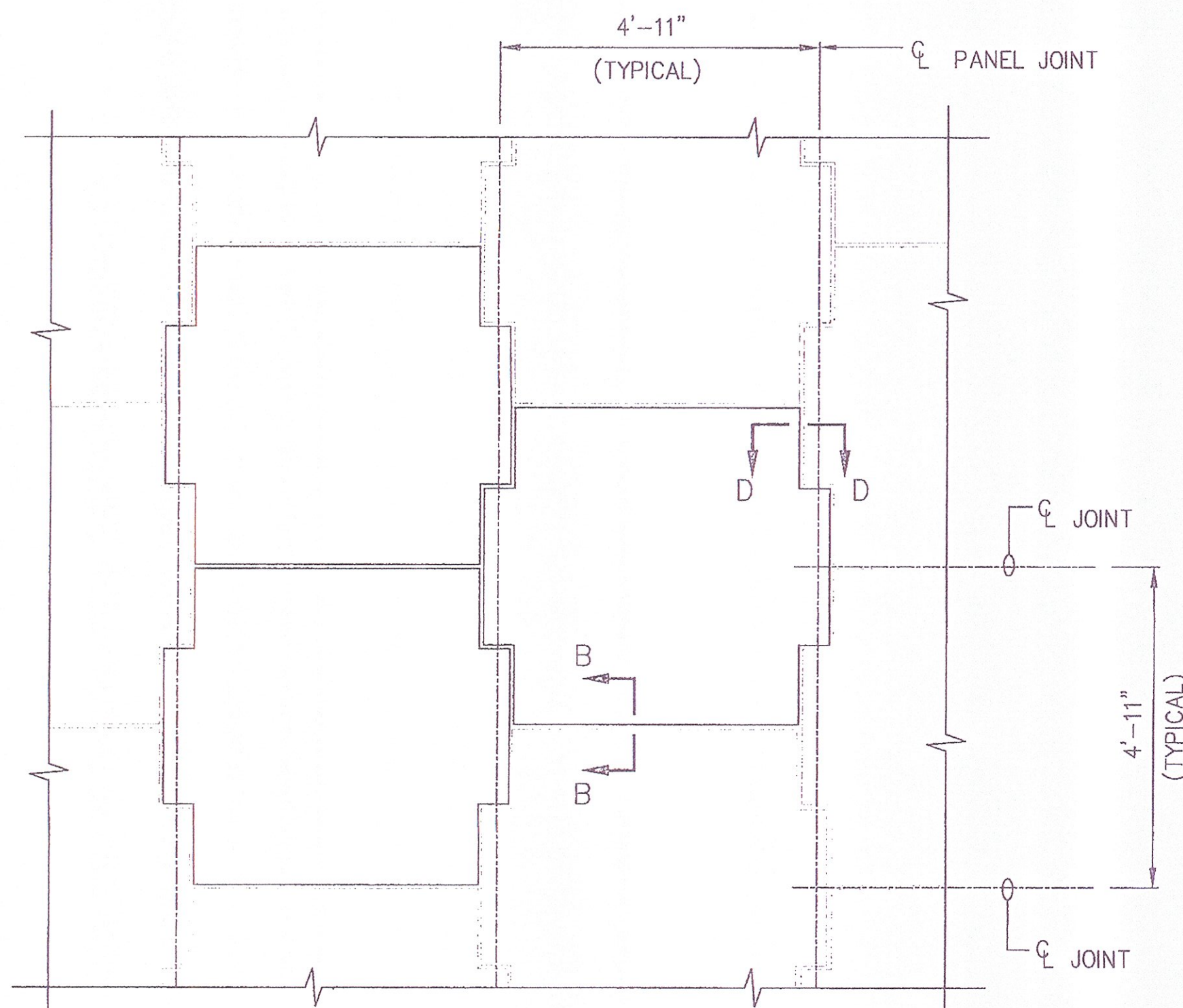
**PANEL TYPE "A"**  
**WITH R6 REINFORCEMENT**  
**FRONT VIEW**  
SCALE: 3/4" = 1'-0"



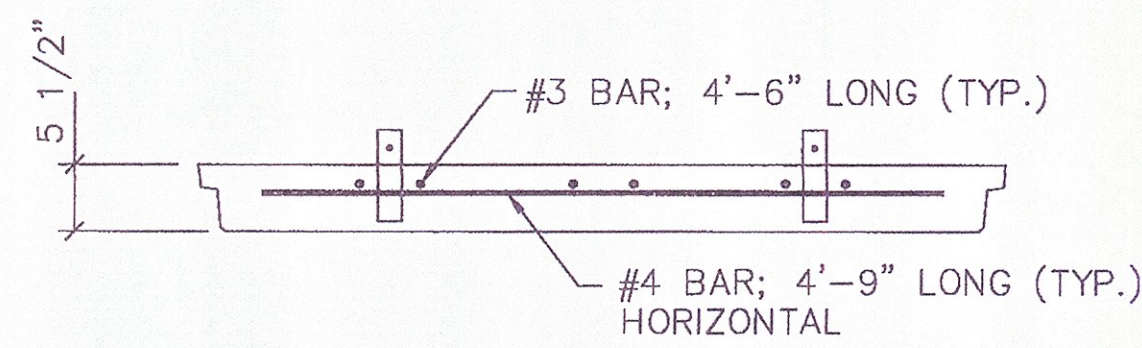
**SECTION C-C**  
SCALE: 3/4" = 1'-0"



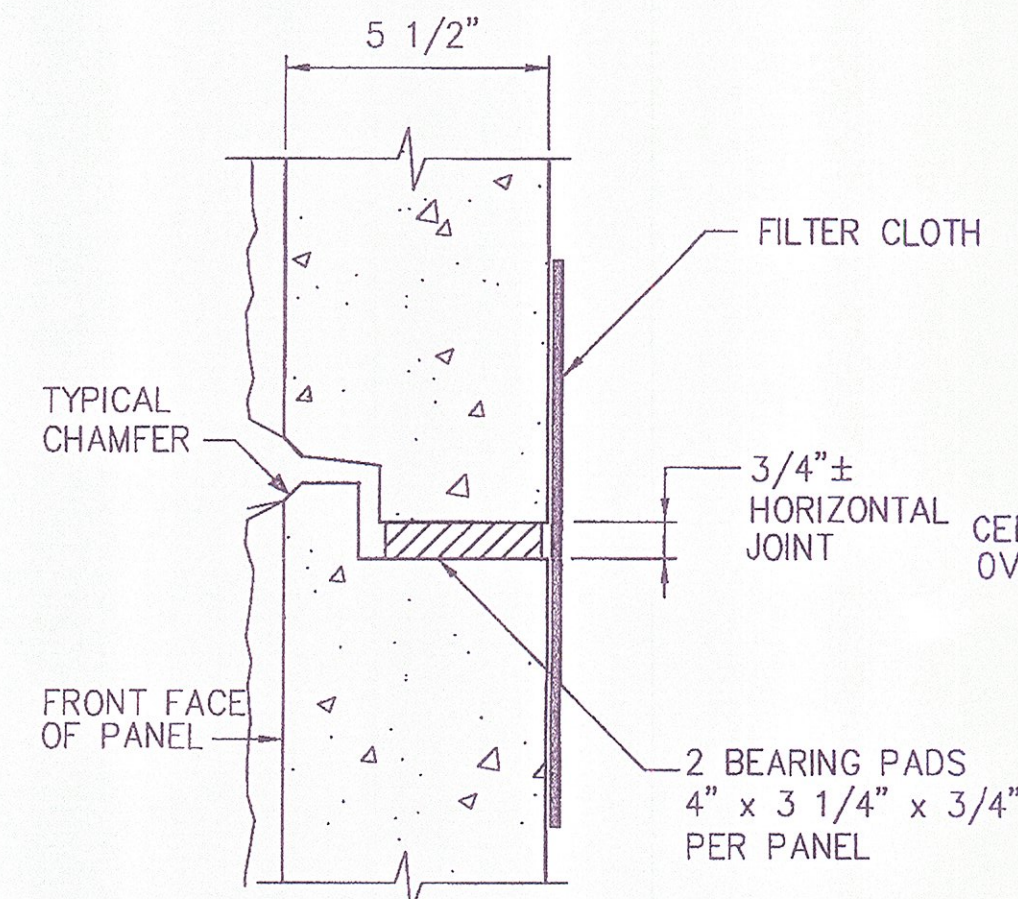
**ASHLAR STONE PANEL FINISH**  
**PANEL TYPE A**  
(LOOKING AT PANEL FACE)



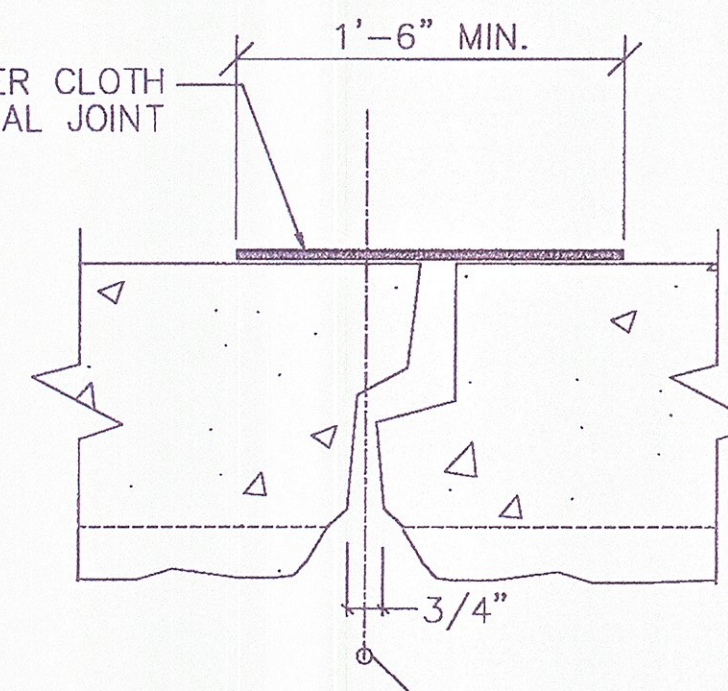
**TYPICAL PANEL LAYOUT**  
**PARTIAL ELEVATION - FRONT FACE**  
SCALE: 1/2" = 1'-0"



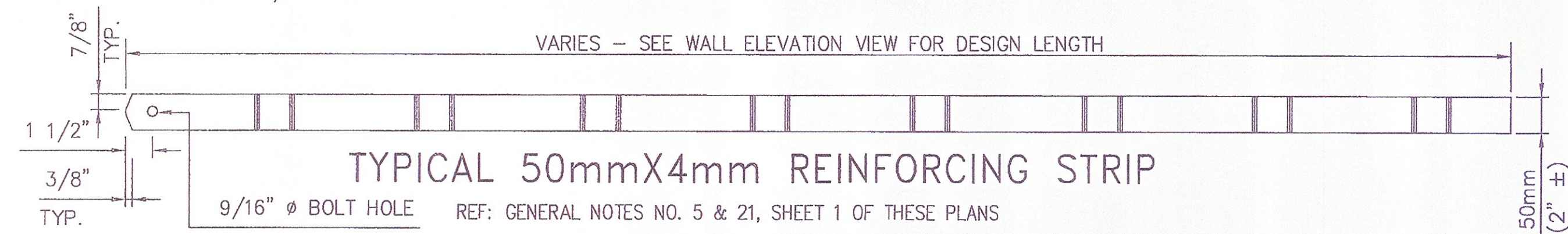
**SECTION A-A**  
SCALE: 3/4" = 1'-0"



**SECTION B-B**  
SCALE: 3" = 1'-0"



**SECTION D-D**  
SCALE: 3" = 1'-0"



**TYPICAL 50mmX4mm REINFORCING STRIP**

REF: GENERAL NOTES NO. 5 & 21, SHEET 1 OF THESE PLANS

PANEL THICKNESS	REINFORCEMENT DESIGNATION	PANEL REINFORCEMENT	MAXIMUM ALLOWABLE HORIZONTAL STRESS AT FACING (ksf)
5 1/2"	R6	6-#3 VERTICAL 4-#4 HORIZONTAL	1.60

**NOTES:**

**PRECAST PANELS**

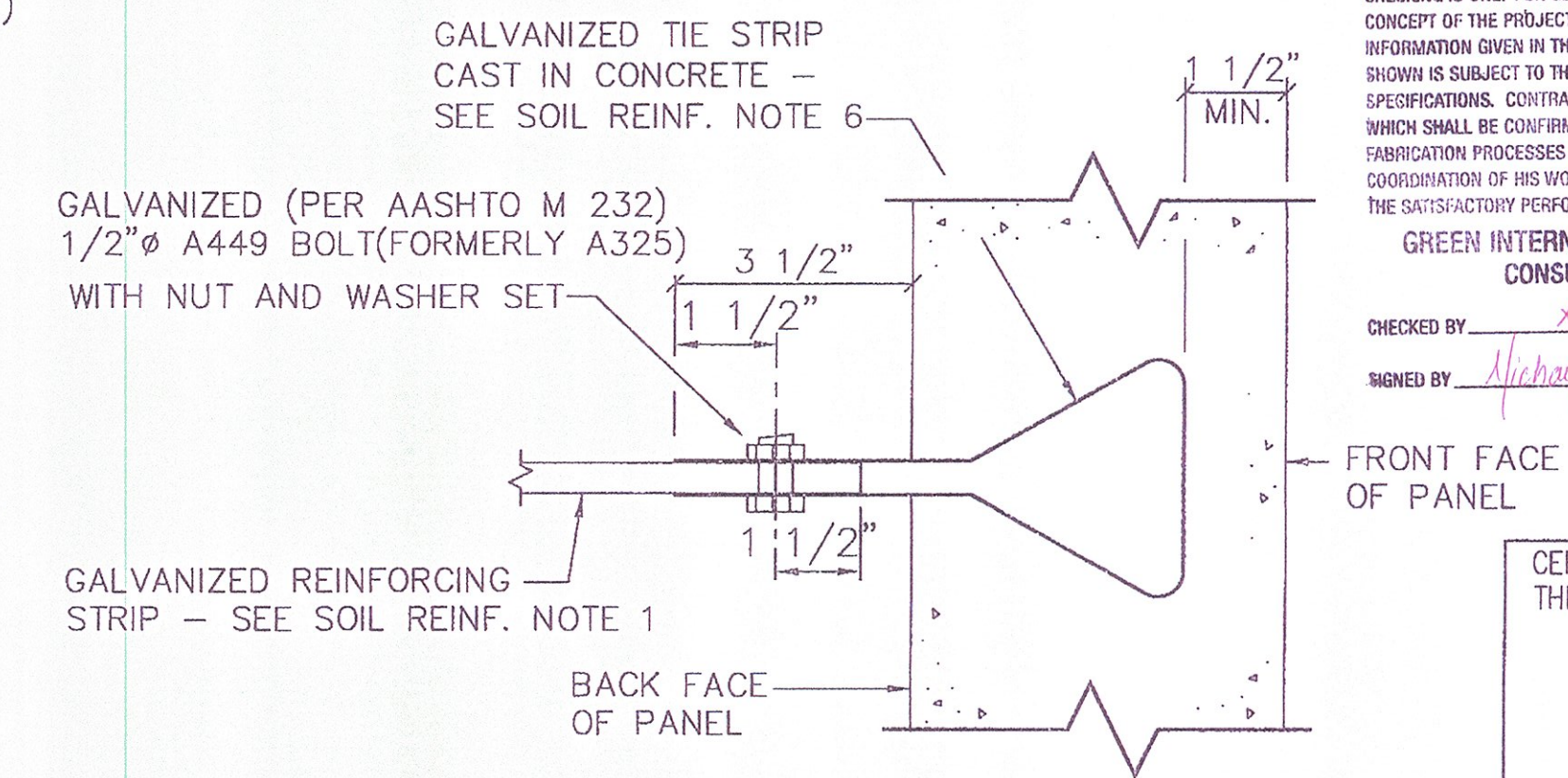
- REINFORCING STEEL TO BE A615 GRADE 60(EPOXY COATED).
- PRECAST CONCRETE PANELS SHALL CONFORM TO VTAOT SECTION 540, 28 DAY COMPRESSIVE STRENGTH OF CONCRETE = 5,000 psi.
- 3/8" x 3/8" CHAMFER SHALL BE PROVIDED ON ALL EXPOSED EDGES (FRONT FACE ONLY), CHAMFER IS OPTIONAL FOR THE BOTTOM OF BOTTOM PANELS.
- ALL PANEL TYPES AND OTHER RELATED ELEMENTS WILL BE DETAILED ON PANEL FABRICATION DRAWINGS.
- ALL PANELS SHALL HAVE TWO LIFTING INSERTS OF ONE TON CAPACITY EACH.
- PANEL DESIGN THICKNESS IS 5 1/2".
- REINFORCED EARTH WALL PANELS SHALL HAVE AN ASHLAR STONE FORM LINER FINISH. SLIP JOINT COVERS SHALL HAVE A PLAIN FORM FINISH.

**SOIL REINFORCEMENT AND ACESORIES**

- REINFORCING STRIPS SHALL BE 50mm WIDE AND 4mm THICK, AND SHALL CONFORM TO THE PHYSICAL AND MECHANICAL PROPERTIES OF ASTM A-572 GRADE 65. GALVANIZATION SHALL BE APPLIED IN ACCORDANCE WITH ASTM A-123 OR AASHTO M111 (2 oz/FT<sup>2</sup>).
- BOLTS SHALL BE ASTM A449 (FORMERLY A325). GALVANIZED PER ASTM A153.
- BEARING BLOKS SHALL BE EPDM RUBBER PADS WITH DUROMETER HARDNESS OF 80±5, CONFORMING TO ASTM D2000.
- SHIMS SHALL BE EPDM RUBBER PADS WITH DUROMETER HARDNESS OF 80±5, CONFORMING TO ASTM D2000. NOMINAL DIMENSION OF SHIM IS 2"x3 1/2"x3/16" THICK.
- FILTER FABRIC FOR PANEL JOINTS SHALL COMPLY WITH AASHTO M288 SUBSURFACE DRAINAGE, CLASS 3, MINIMUM LAP SHALL BE 4"
- TIE STRIPS SHALL BE 10 GAGE, ASTM A1011 (FORMERLY A-570) GRADE 50, GALVANIZED AS PER ASTM A-123 OR A-153, 10 GAGE.
- SEE CONSTRUCTION MANUAL FOR ADDITIONAL INFORMATION.

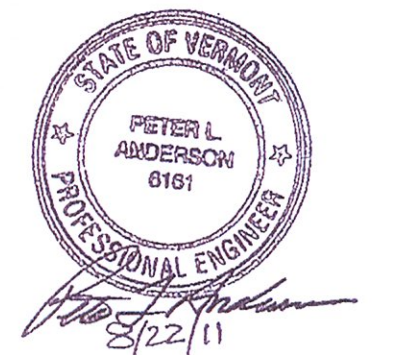
APPROVED  Approved as Noted   
 Revises and Resubmits  DISAPPROVED   
 CHECKING IS ONLY FOR GENERAL CONFORMANCE WITH THE DESIGN CONCEPT OF THE PROJECT AND GENERAL COMPLIANCE WITH THE INFORMATION GIVEN IN THE CONTRACT DOCUMENTS. ANY ACTION SHOWN IS SUBJECT TO THE REQUIREMENTS OF THE PLANS AND SPECIFICATIONS. CONTRACTOR IS RESPONSIBLE FOR DIMENSIONS WHICH SHALL BE CONFIRMED AND CORRELATED AT THE JOB SITE. FABRICATION PROCESSES AND TECHNIQUES OF CONSTRUCTION; COORDINATION OF HIS WORK WITH THAT OF ALL OTHER TRADES AND THE SATISFACTORY PERFORMANCE OF HIS WORK.  
**GREEN INTERNATIONAL AFFILIATES, INC.**  
 CONSULTING ENGINEERS

CHECKED BY: *KZ* DATE: 7/11  
 SIGNED BY: *Michael Lutz* DATE: 9/11



**CONNECTION DETAIL**  
NO SCALE

CERTIFIED WITH RESPECT TO THE INTERNAL STABILITY OF REINFORCED EARTH STRUCTURES ONLY



This drawing contains information proprietary to The Reinforced Earth Company, and is being furnished for the use of VTAOT only in connection with this project, and the information contained herein is not to be transmitted to any other organization unless specifically authorized in writing by The Reinforced Earth Company. The Reinforced Earth Company is exclusive licensee in the United States under patents issued to Henri Vidal, and the furnishing of this drawing does not constitute an expressed or implied license under the Vidal patents.

The design contained on these drawings is based on information provided by the owner. On the basis of this information, The Reinforced Earth Company has designed, and is responsible for the internal stability of the structure only. External stability, including foundation (bearing capacity and settlement) and slope (global) stability, is the responsibility of the owner.



"REINFORCED EARTH" is the registered trademark of The Reinforced Earth Company.

DESIGNED BY: DTM		PROJECT NAME	U.S. ROUTE 2 OVER EXISTING STREAM	DATE	04/6/11
PROJECT ENGR: LY		LOCATION	CABOT-DANVILLE VERMONT	CONTRACT NO.	RE-15053
CHECKED BY: PLA/EEH		OWNER	VTAOT	DRAWING NO.	7 OF 7
REV.	DATE	DESCRIPTION	DRAWING COVERS	STANDARD PANEL DETAILS	SCALE AS SHOWN

R:\RE15053\_REW\_VT\_CABOT\_DANVILLE\DWGS\07\_STANDARD\_PANEL\_DETAILS.DWG