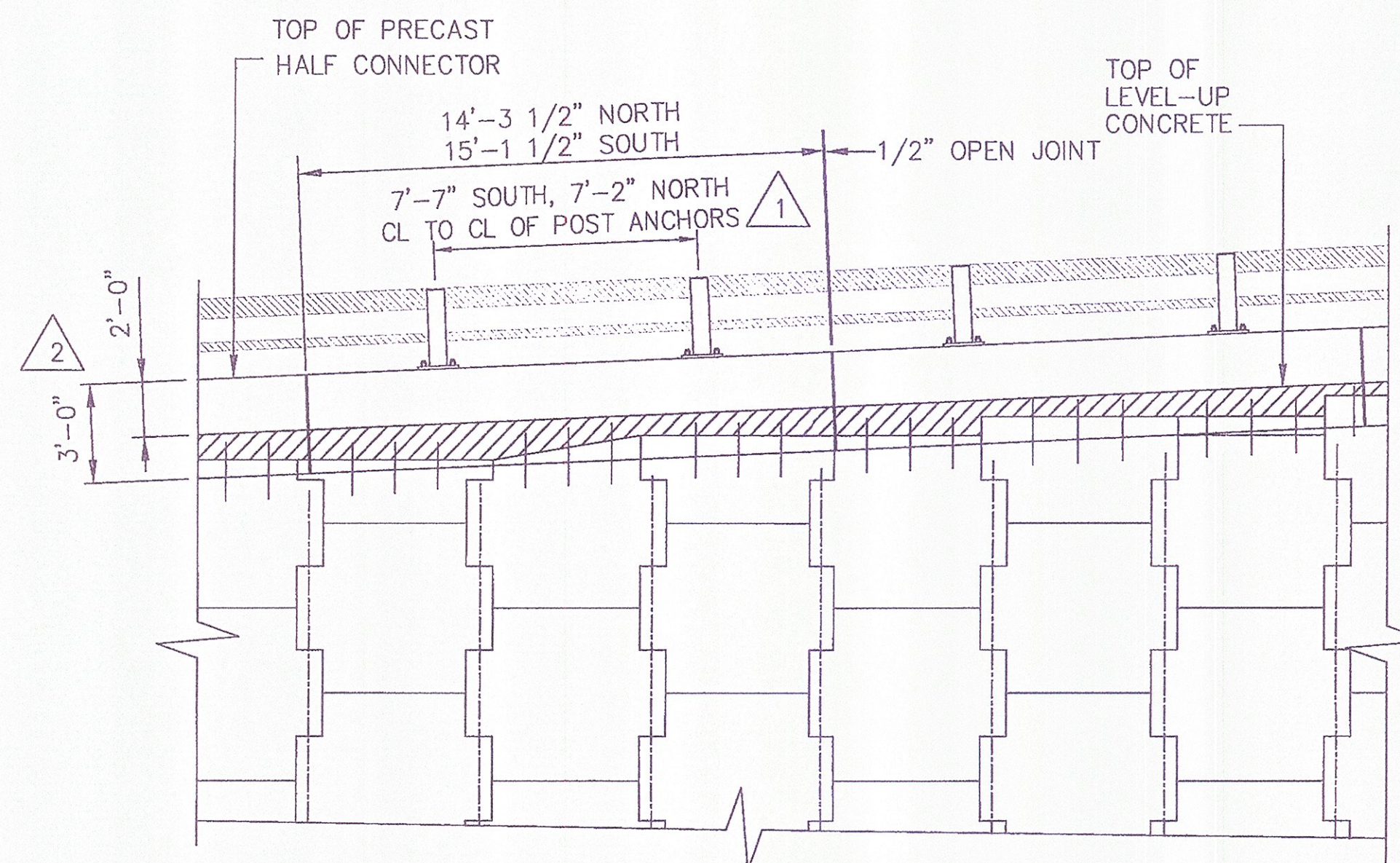
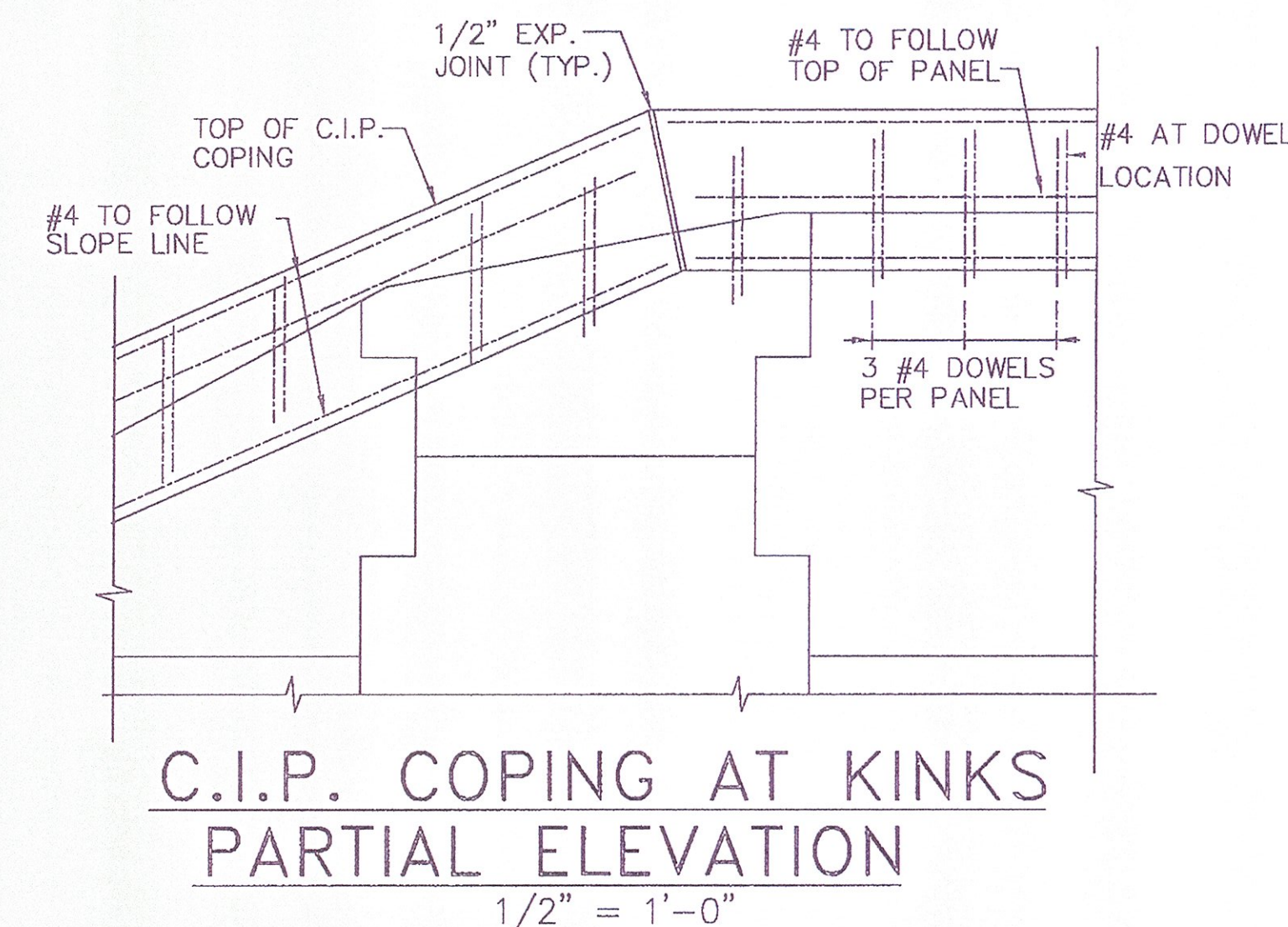


△ 2  
**PRECAST HALF CONNECTOR SECTION**  
 SCALE: 1" = 1'-0"

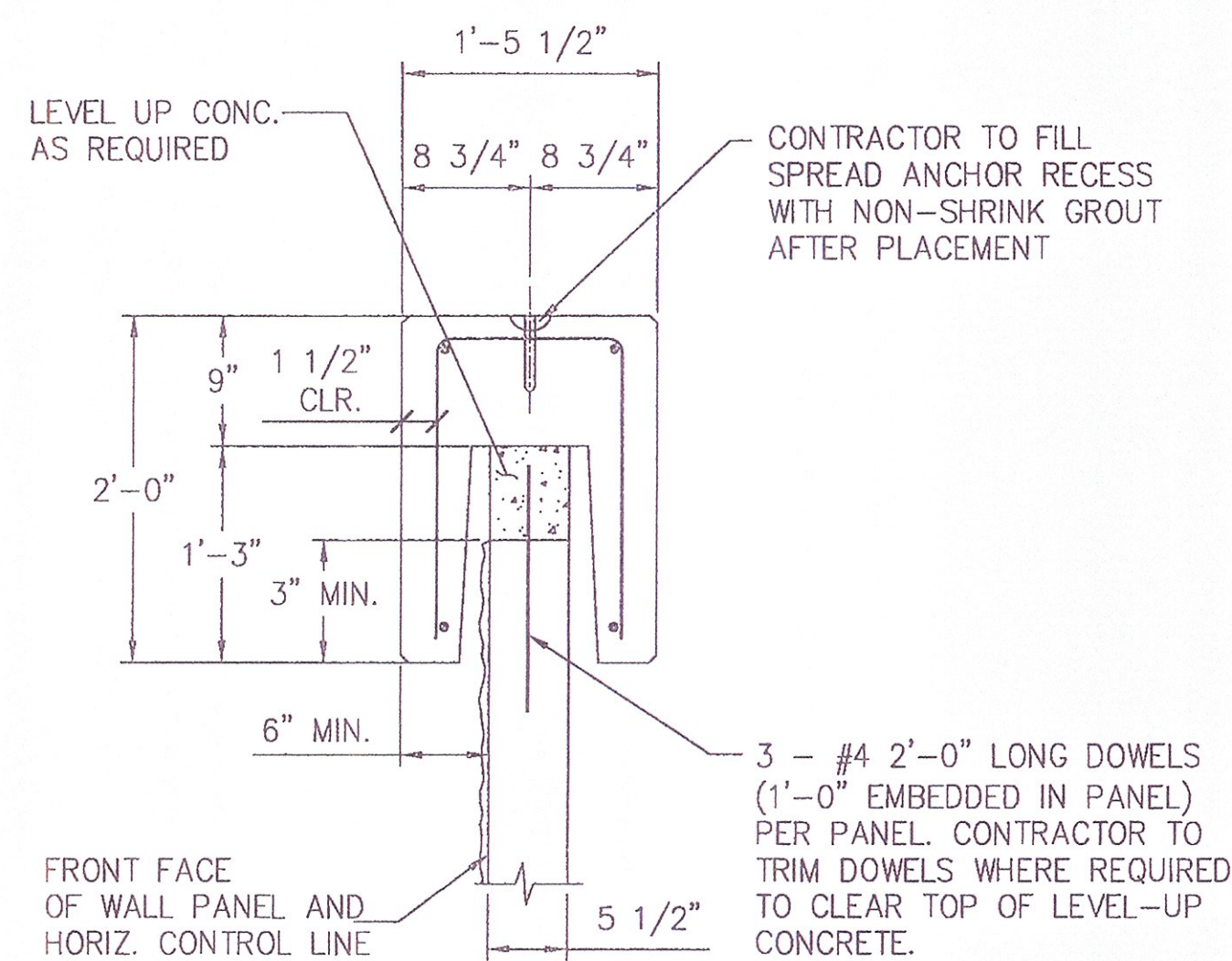


**PRECAST HALF CONNECTOR PARTIAL ELEVATION**  
 SCALE: 1" = 1'-0"



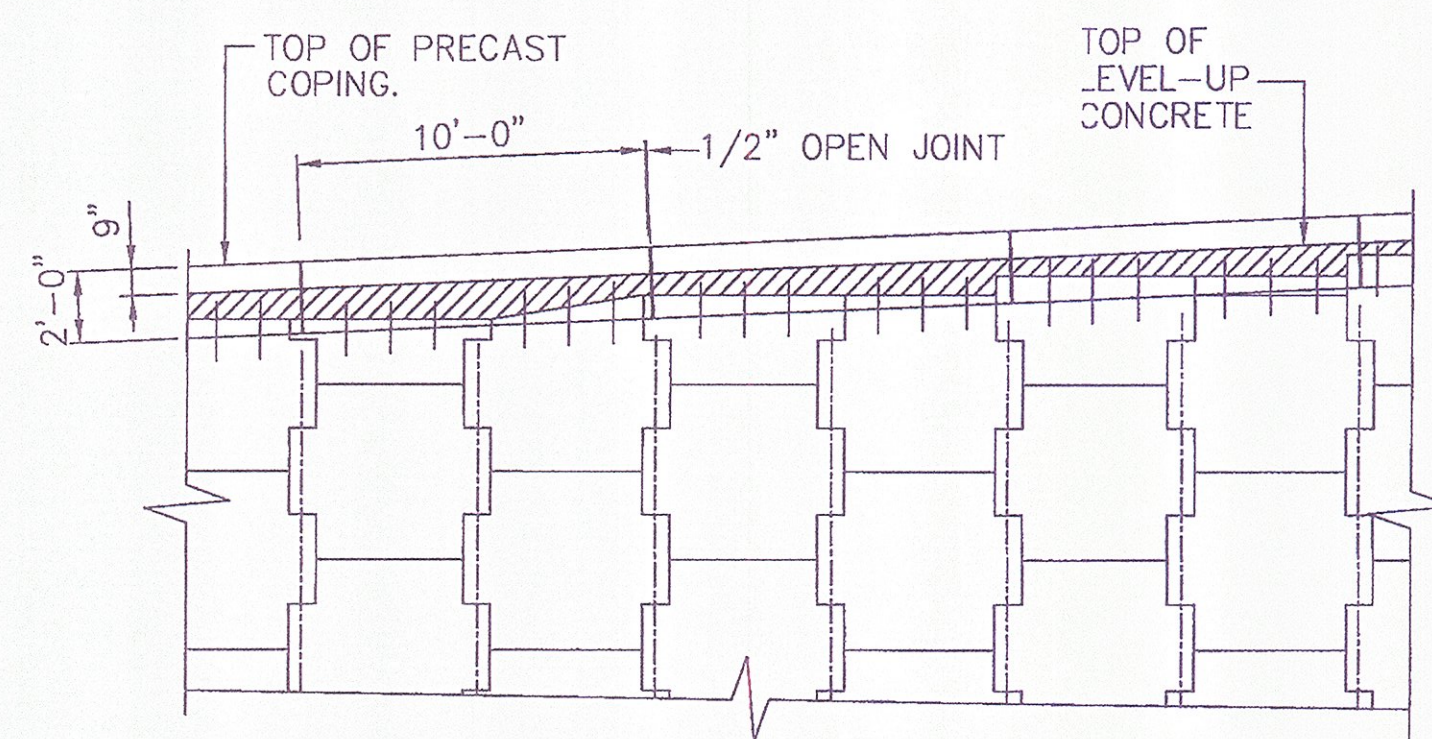
**C.I.P. COPING AT KINKS PARTIAL ELEVATION**  
 1/2" = 1'-0"

NOTE:  
 1/2" EXPANSION JOINTS SHOULD BE PLACED AT KINKS AND CORNER POINTS WHEREBY ALL LONGITUDINAL REINFORCEMENT SHALL BE FIELD CUT 2 1/2" SHORT OF EACH SIDE OF THE EXPANSION JOINTS.

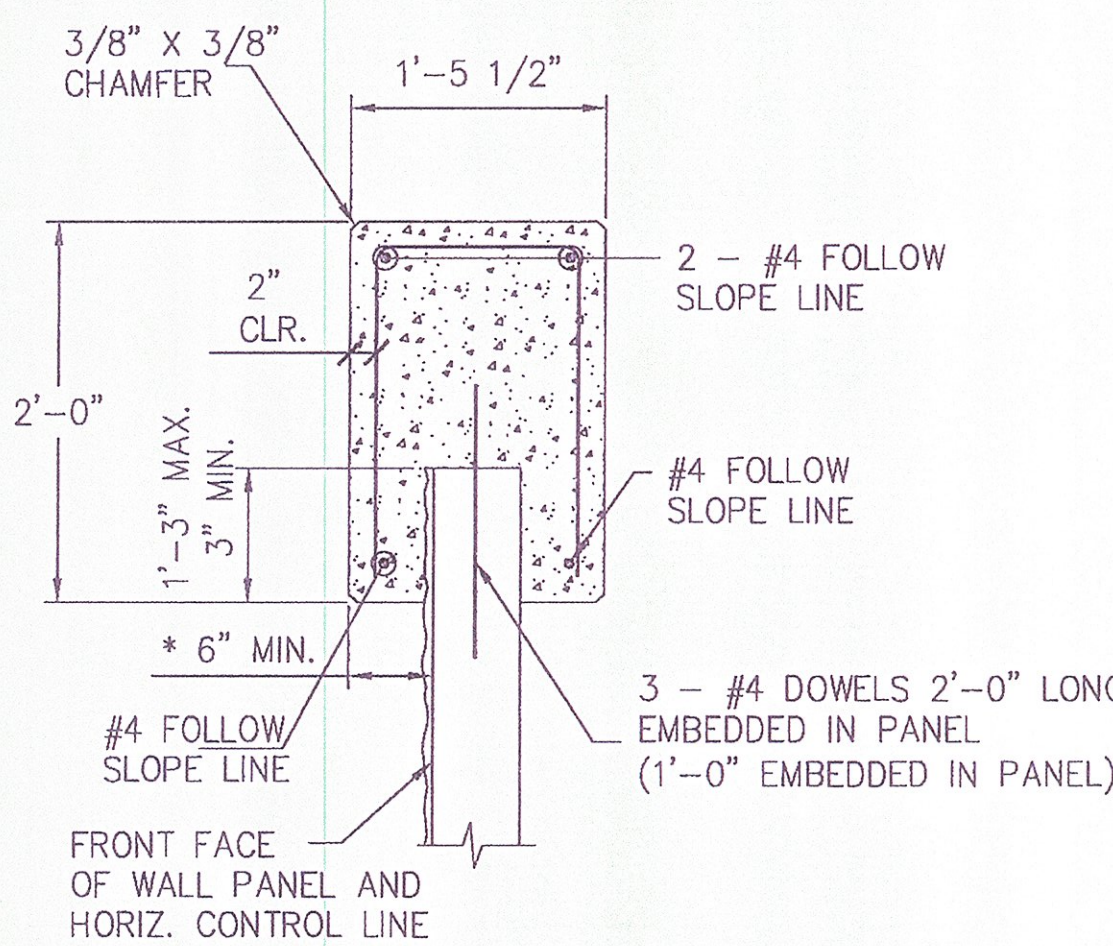


STANDARD COPING UNIT IS 10'-0" WITH SQUARE ENDS  
**PRECAST COPING SECTION**  
 SCALE: 1" = 1'-0"

- NOTES:  
 1. CONCRETE = 5,000psi  
 2. STEEL = GRADE 60(EPOXY COATED)  
 3. ALL LONGITUDINAL BARS ARE #4



**PRECAST COPING PARTIAL ELEVATION**  
 SCALE: 3/16" = 1'-0"

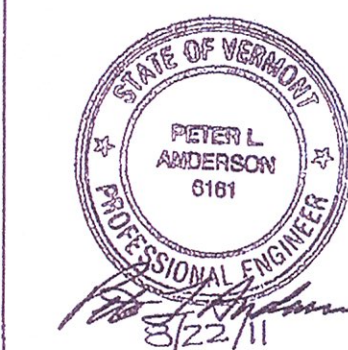


**C.I.P. CONC. COPING SECTION TO MATCH PRECAST COPING**  
 SCALE: 1" = 1'-0"

- NOTES:  
 1. CONC. = 3,500 psi  
 2. STEEL = GRADE 60 (EPOXY COATED)  
 3. ALL LONGITUDINAL BARS ARE #4  
 4. EXPANSION JOINTS (1/2") EVERY 8 PANEL JOINTS  
 5. CONSTRUCTION JOINTS (1/2") EVERY 2 PANEL JOINTS

APPROVED  Approved as Noted   
 Revise and Resubmit  DISAPPROVED   
 CHECKING IS ONLY FOR GENERAL CONFORMANCE WITH THE DESIGN CONCEPT OF THE PROJECT AND GENERAL COMPLIANCE WITH THE INFORMATION GIVEN IN THE CONTRACT DOCUMENTS. ANY ACTION SHOWN IS SUBJECT TO THE REQUIREMENTS OF THE PLANS AND SPECIFICATIONS. CONTRACTOR IS RESPONSIBLE FOR DIMENSIONS WHICH SHALL BE CONFIRMED AND CORRELATED AT THE JOB SITE; FABRICATION PROCESSES AND TECHNIQUES OF CONSTRUCTION; COORDINATION OF HIS WORK WITH THAT OF ALL OTHER TRADES AND THE SATISFACTORY PERFORMANCE OF HIS WORK.  
 GREEN INTERNATIONAL AFFILIATES, INC.  
 CONSULTING ENGINEERS  
 CHECKED BY: *[Signature]* DATE: 9/11  
 SIGNED BY: *[Signature]* DATE: 9/11

CERTIFIED WITH RESPECT TO THE INTERNAL STABILITY OF REINFORCED EARTH STRUCTURES ONLY



R:\RE15053\_REW\_VT\_CABOT\_DANVILLE\DWGS\05\_TPOUT\_DETAILS\_REV2.DWG

This drawing contains information proprietary to The Reinforced Earth Company, and is being furnished for the use of VTAOT only in connection with this project, and the information contained herein is not to be transmitted to any other organization unless specifically authorized in writing by The Reinforced Earth Company. The Reinforced Earth Company is exclusive licensee in the United States under patents issued to Henri Vidal, and the furnishing of this drawing does not constitute an expressed or implied license under the Vidal patents.

The design contained on these drawings is based on information provided by the owner. On the basis of this information, The Reinforced Earth Company has designed, and is responsible for the internal stability of the structure only. External stability, including foundation (bearing capacity and settlement) and slope (global) stability, is the responsibility of the owner.



"REINFORCED EARTH" is the registered trademark of The Reinforced Earth Company.

DESIGNED BY: DTM		PROJECT NAME U.S. ROUTE 2 OVER EXISTING STREAM	DATE 04/6/11
PROJECT ENGR: LY	△ 2 8/19/11	LOCATION CABOT-DANVILLE VERMONT	CONTRACT NO. RE-15053
CHECKED BY: PLA/EEH	△ 1 7/19/11	OWNER VTAOT	DRAWING NO. 5 OF 7
REV.	DATE	DESCRIPTION	SCALE AS SHOWN
		DRAWING COVERS TOPOUT DETAILS	