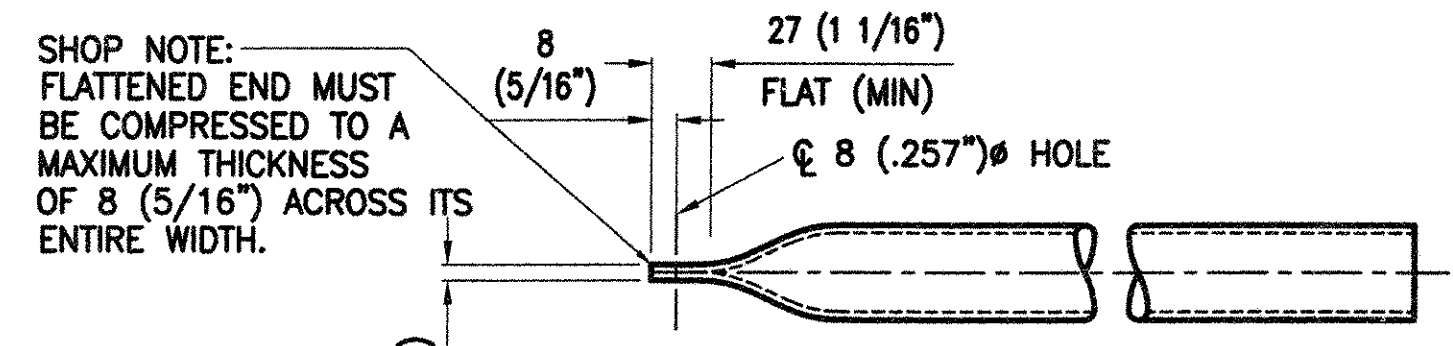
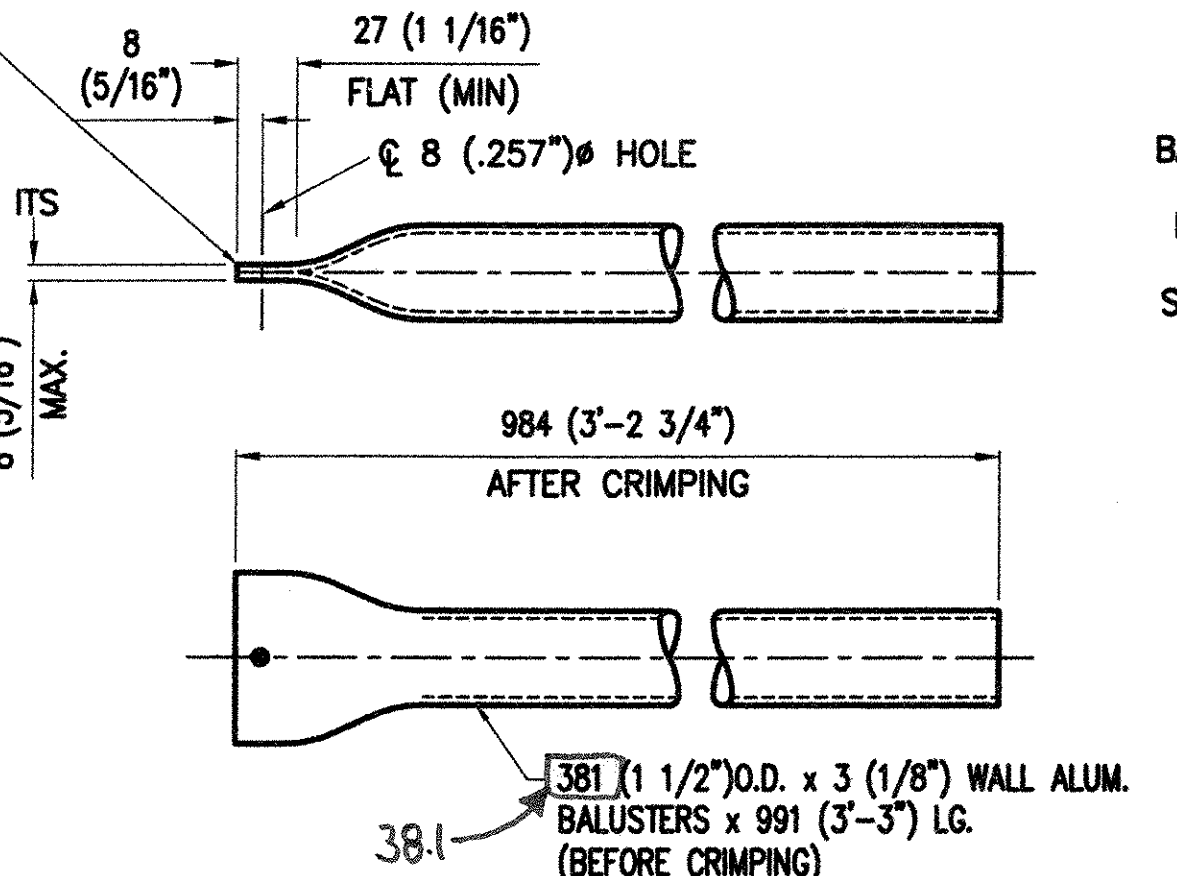


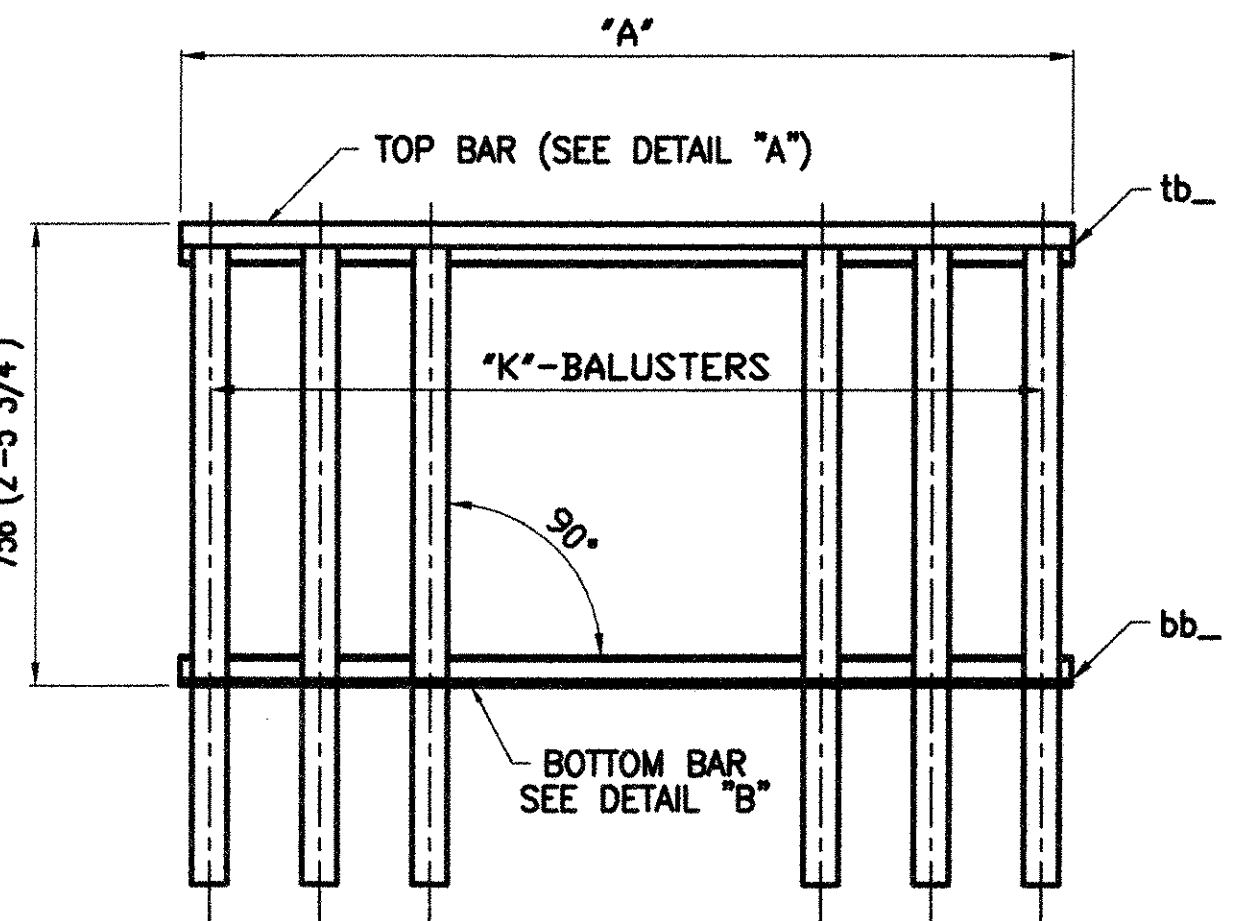
**TOP BALUSTER BARS (tb)**  
(SEE BELOW FOR DIMS)



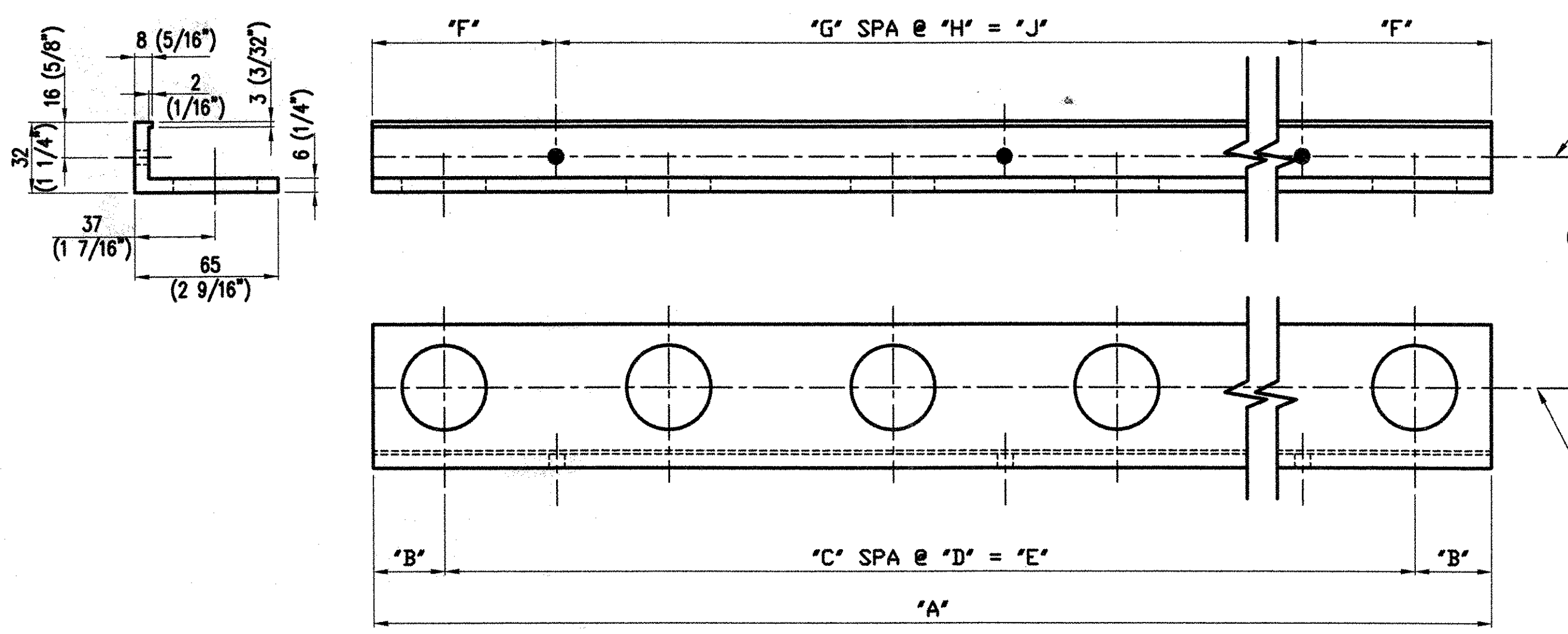
DRILL & TAP  
6 (1/4) - 20UNC



**548 - REQ'D BALUSTERS**



**BALUSTER PANEL ASSEMBLY**

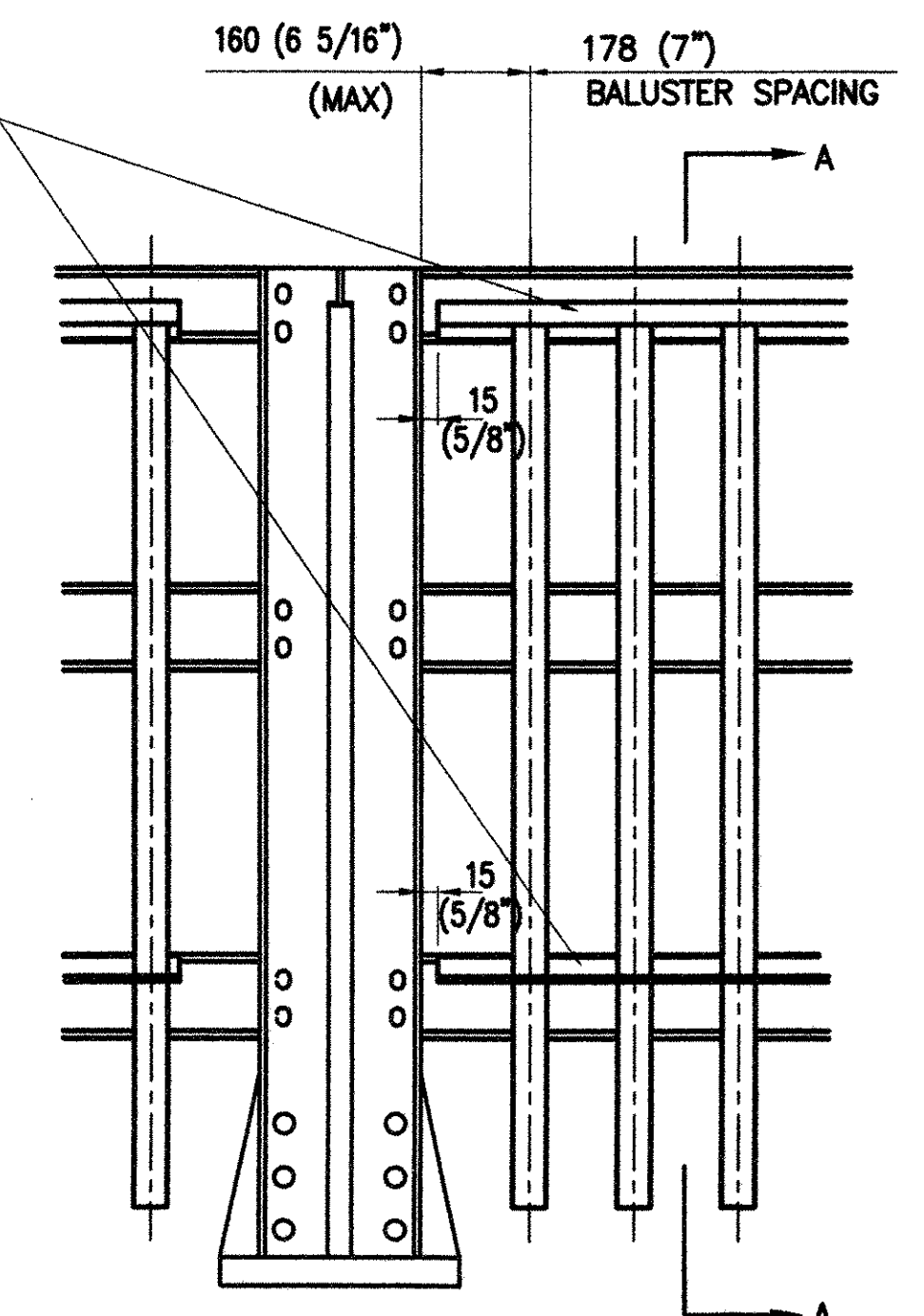


**BOTTOM BALUSTER BARS (bb)**  
(SEE BELOW FOR DIMS)

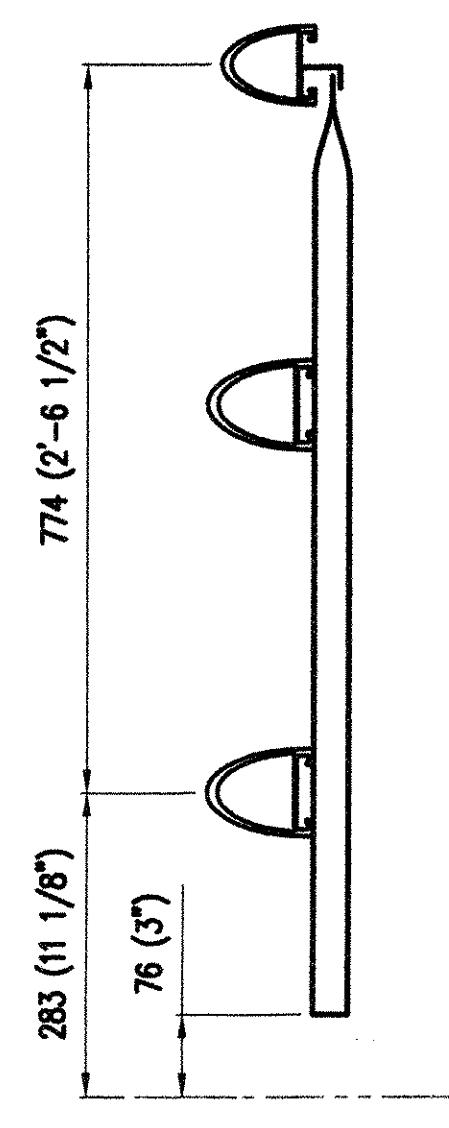
DRILL & TAP  
6 (1/4) - 20UNC

6 (1/4) - 20UNC S.S. SOCKET SET SCREW EVERY OTHER SPACE BETWEEN BALUSTERS IF POSSIBLE

Ø 381 (1 1/2)\"/>

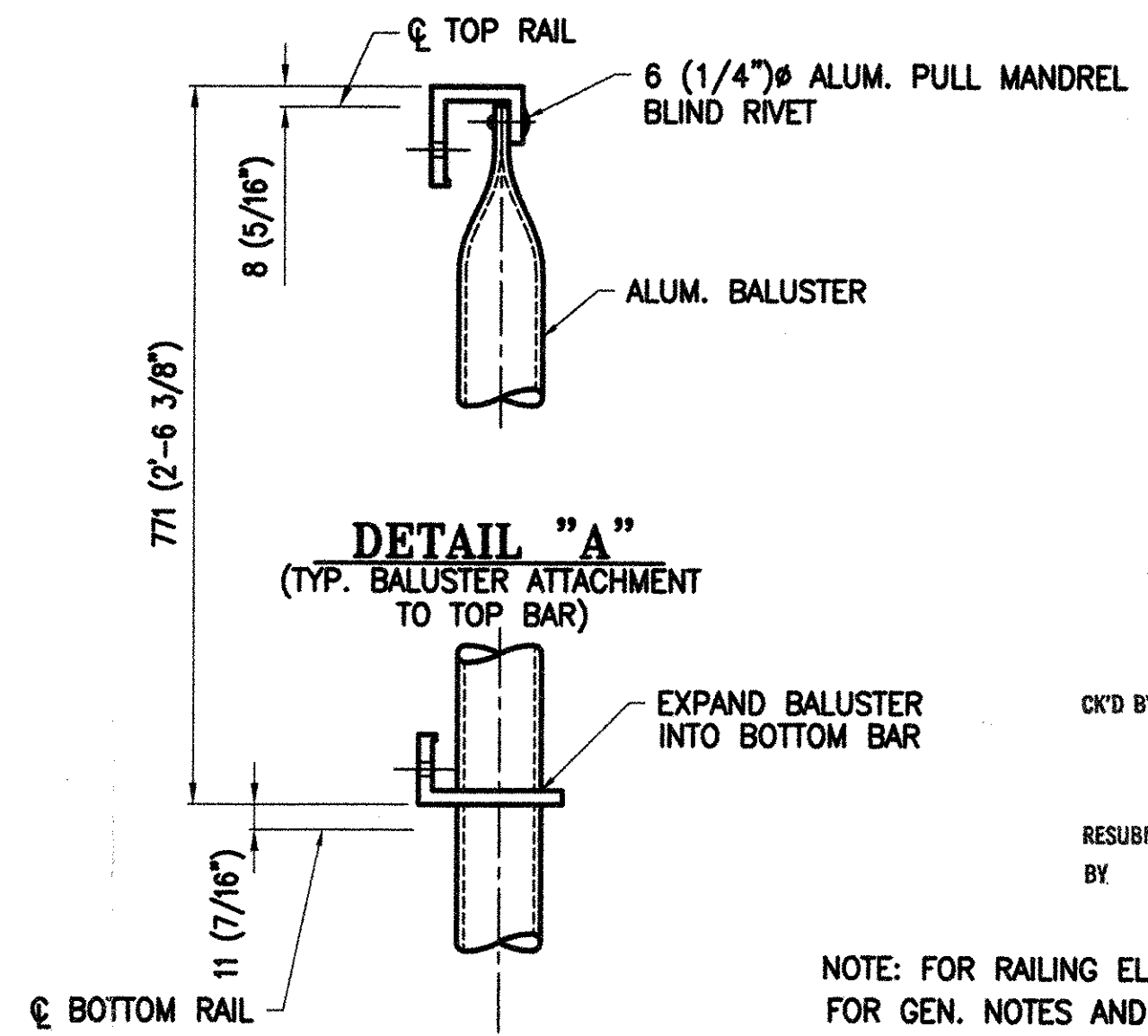


**TYP. ELEVATION**



**SECTION A-A**

BILL OF MATERIAL						
MARK NO.	NO. REQ'D.	DESCRIPTION	LENGTH			REMARKS
			MAL.	FT.	IN.	
BP1	42	BALUSTER PANELS CONSISTING OF:				
tb	42	TOP PANEL BARS	2184	7	2	ALUM
bb	42	BOTTOM PANEL BARS	2184	7	2	
38.1	504	381 (1 1/2)\"/>				
504	6	(1/4)\"/>				
252	6	(1/4) - 20UNC SET SCREWS	13	0	0 1/2	STNL STL
BP2	2	BALUSTER PANELS CONSISTING OF:				
tb	2	TOP PANEL BARS	2089	6	10 1/4	ALUM
bb	2	BOTTOM PANEL BARS	2089	6	10 1/4	
38.1	24	381 (1 1/2)\"/>				
24	6	(1/4)\"/>				
12	6	(1/4) - 20UNC SET SCREWS	13	0	0 1/2	STNL STL
BP3	2	BALUSTER PANELS CONSISTING OF:				
tb	2	TOP PANEL BARS	1813	5	11 3/8	ALUM
bb	2	BOTTOM PANEL BARS	1813	5	11 3/8	
38.1	20	381 (1 1/2)\"/>				
20	24	6 (1/4)\"/>				
10	12	6 (1/4) - 20UNC SET SCREWS	13	0	0 1/2	STNL STL



**DETAIL "A"**  
(TYP. BALUSTER ATTACHMENT TO TOP BAR)

**DETAIL "B"**  
(TYP. BALUSTER ATTACHMENT TO BOTTOM BAR)

RECEIVED  
OK'D BY *GWC* OK'D BY *MAP*  
DEC 23 1999  
RESUBMIT \_\_\_\_\_ APPROVED AS NOTED  
BY \_\_\_\_\_ DATE DEC 30 1999

NOTE: FOR RAILING ELEV. SEE DWG. LB2.  
FOR GEN. NOTES AND TYPICAL DETAILS SEE DWG. LB1.

PANEL MK.	PC. MARK	QTY	"A"	"B"	"C"	"D"	"E"	"F"	"G"	"H"	"J"	"K"
BP1	tb1 bb1	42/42	2184 (7'-2")	115 (4 1/2")	11	178 (7")	1956 (6'-5")	203 (8")	5	356 (1'-2")	1778 (5'-10")	12
BP2	tb2 bb2	2/2	2089 (6'-10 1/4")	67 (2 5/8")	11	178 (7")	1956 (6'-5")	156 (6 1/8")	5	356 (1'-2")	1778 (5'-10")	12
BP3	tb3 bb3	2/2	1813 (5'-11 3/8")	106 (4 3/16")	9	178 (7")	1600 (5'-3")	195 (7 11/16")	4	356 (1'-2")	1422 (4'-8")	10

APPROVED:	REC'D APPL.
<b>L. B. FOSTER CO.</b>	
1016 GREENTREE ROAD PITTSBURGH, PENNSYLVANIA 15220	
FOR: BECK AND BELLUCCI, INCORPORATED	
STATE OF VERMONT AGENCY OF TRANSPORTATION	
TOWN OF BRISTOL, ADDISON COUNTY - PROJ. No. ER 021-1(13)	
3-LINE ALUM. BRIDGE RAIL	
BALUSTER PANEL DETAILS AND BILL OF MATL <i>036</i>	
MADE <i>BAB</i> DATE <i>11/9/99</i> JOB NO. <i>A19199</i> CUST. NO.	
CHECK <i>KAD</i> DATE <i>11/10/99</i> DRAWING <i>LB3</i> REV. NO.	