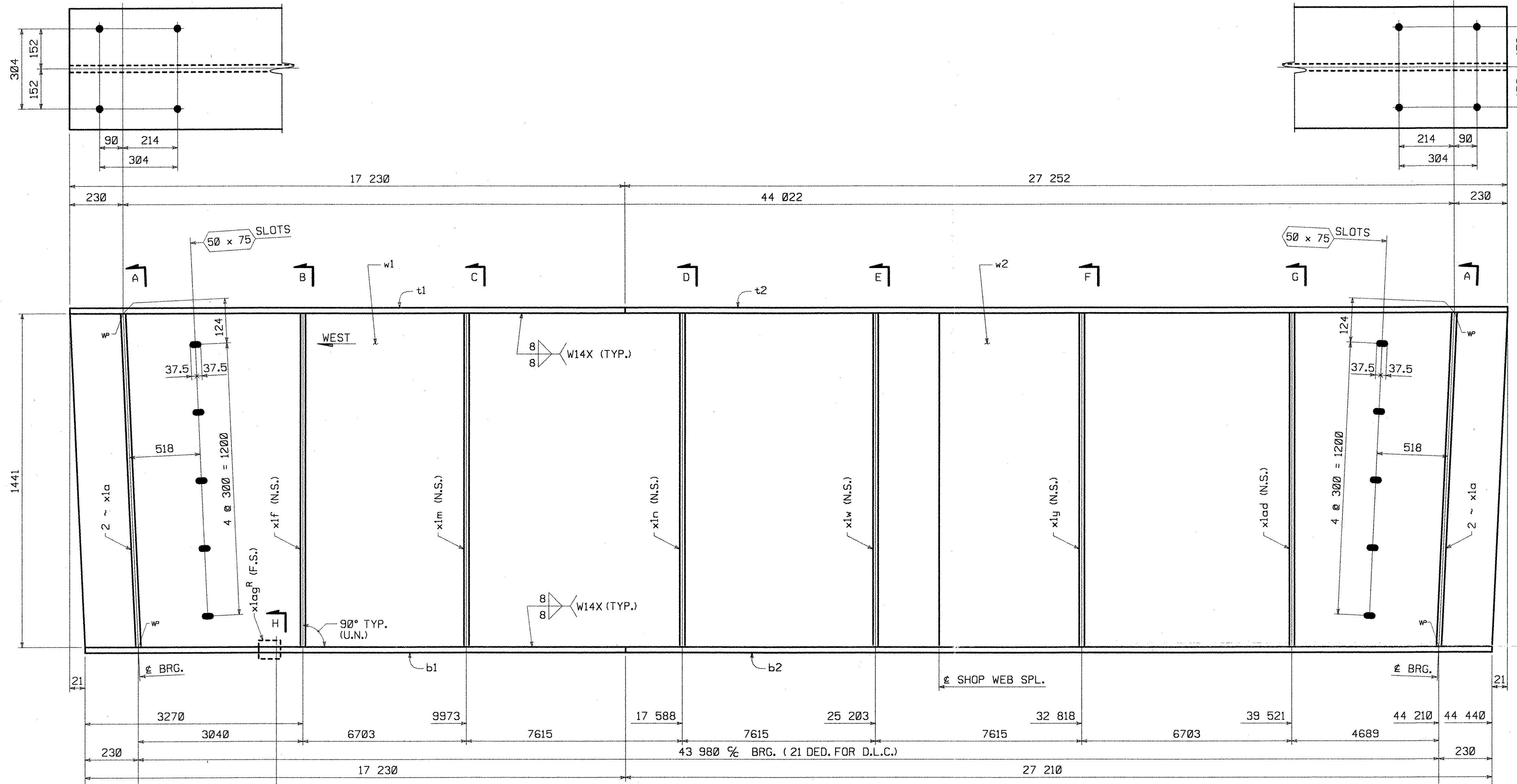


METRIC 1. ALL DIMENSIONS ARE IN MILLIMETERS UNLESS OTHERWISE NOTED.
2. ALL WEIGHTS ARE IN KILOGRAMS.

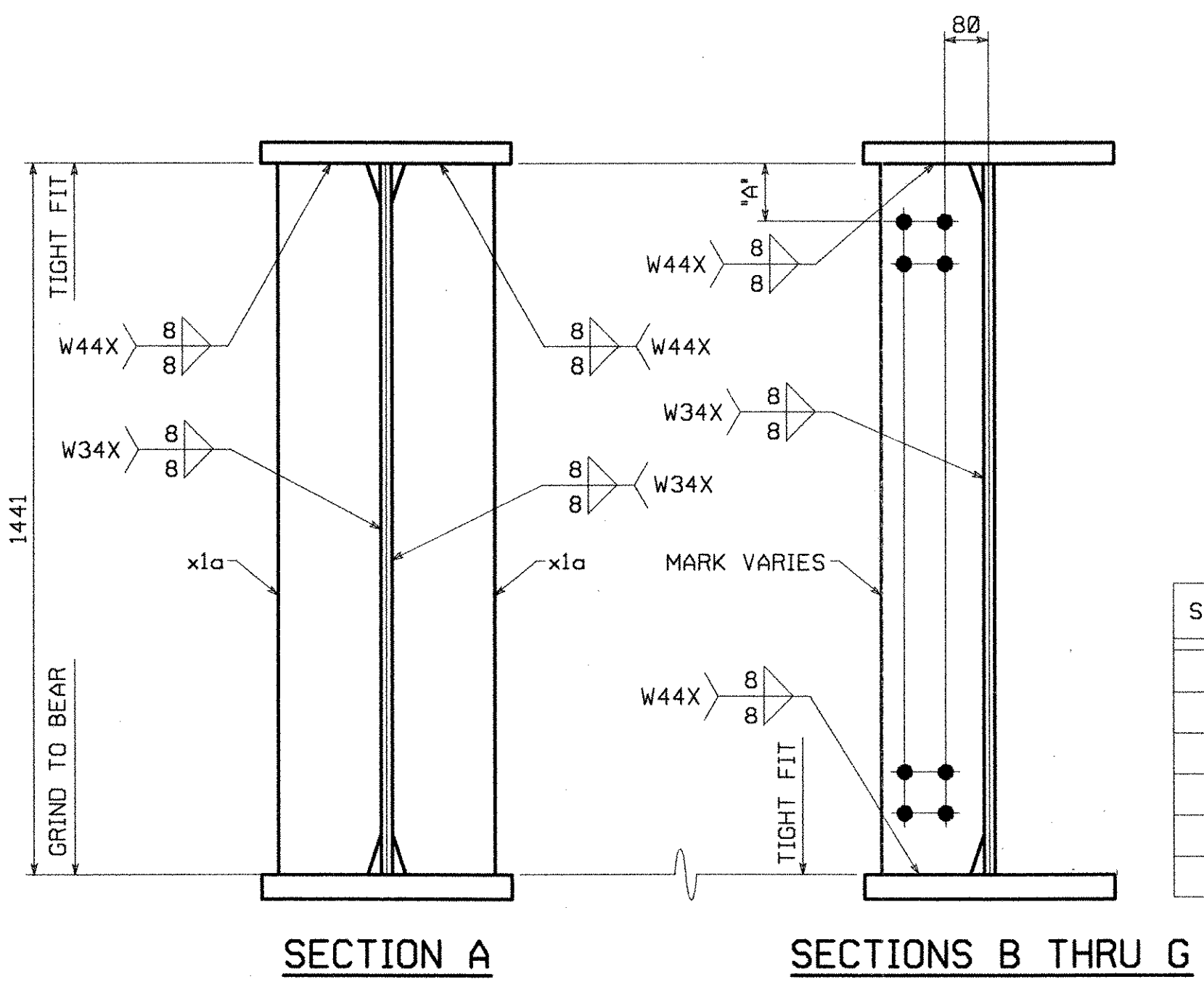
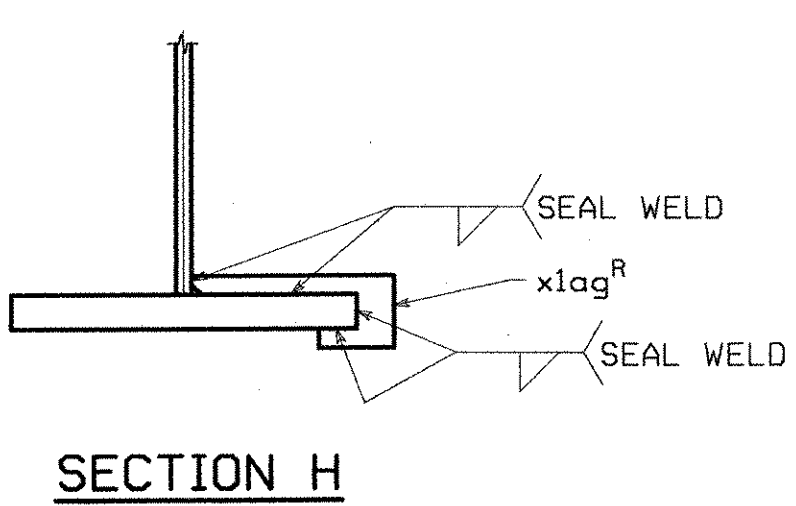
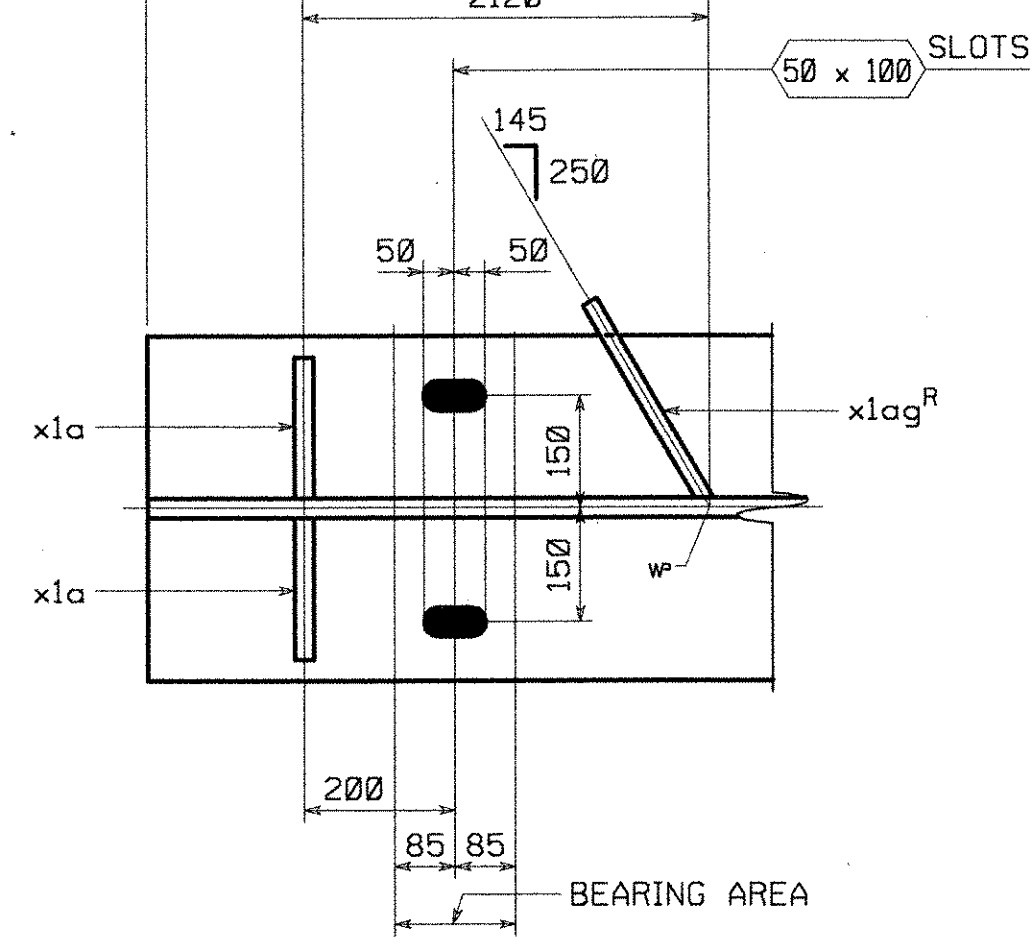
FED. ROAD DIV. NO.	STATE	FED. AID PROJ. NO.
	VT	

BILL OF MATERIAL

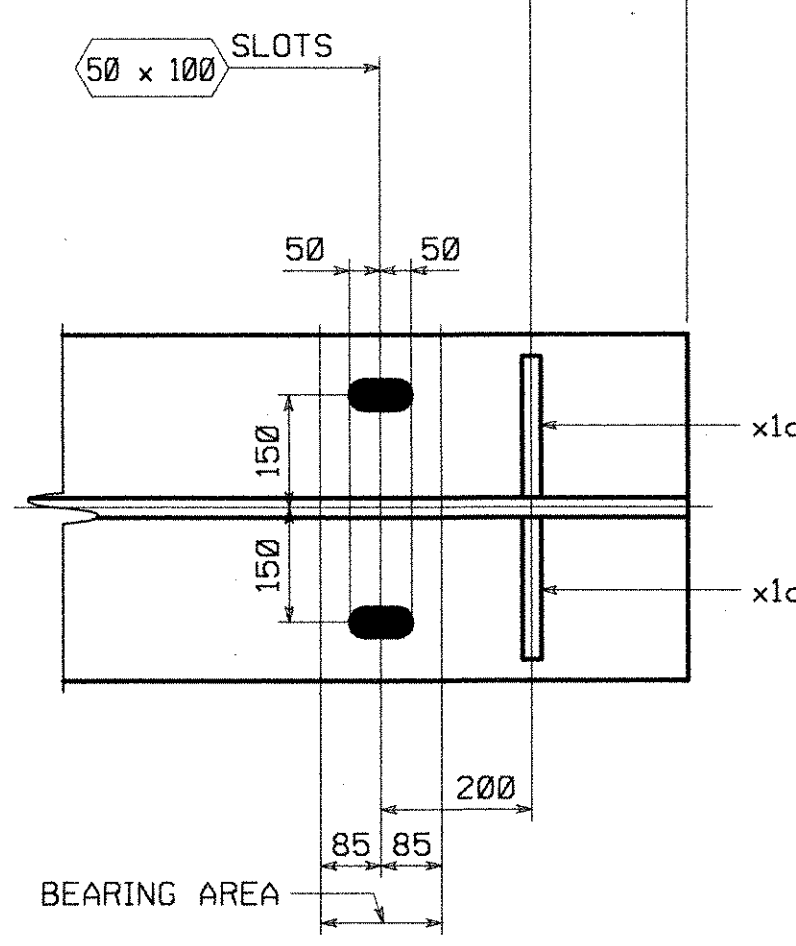
NO.	MARK	DESCRIPTION	LENGTH	REMARKS	ITEM	SHIP WEIGHT EA.
ONE	G1A	GIRDER				23 725kg
1	w1	PL 1441 x 20	27 252 (T)		1/2	
1	w2	PL 1441 x 20	17 233 (T)		1/3	
1	t1	PL 458 x 38	17 230 (T)		2/5	
1	t2	PL 458 x 38	27 252 (T)		2/4	
1	b1	PL 458 x 45	17 230 (T)		2/3	
1	b2	PL 458 x 45	27 210 (T)		2/2	
4	x1a	PL 188 x 25	1441		3/2	
1	x1f	PL 188 x 14	1441		3/3	
1	x1m	PL 188 x 14	1441		3/3	
1	x1n	PL 188 x 14	1441		3/3	
1	x1w	PL 188 x 14	1441		3/3	
1	x1y	PL 188 x 14	1441		3/3	
1	x1ad	PL 188 x 14	1441		3/3	
1	x1ag ^R	PL 95 x 7	303		3/4	



GIRDER MK. ~ G1A



SECT.	"A"
B	120
C	112
D	110
E	102
F	100
G	92



SHOP NOTE

HOLES: 24# (U.N.)
BOLTS: NONE
PAINT: NONE
FOR GENERAL SHOP NOTES, SEE DWG. GNI.
FOR WEB CAMBER DIAGRAM, SEE DWG. WCI.

RECEIVED
CHK'D BY *GWC* OK'D BY *AP*
NOV 16 1999
RESUBMIT APPROVED
DATE 12/6/99

NO.	REVISION	BY	DATE

HIGH STEEL STRUCTURES, INC.
1770 Hempstead Road
Lancaster, PA 17605-0008
Phone 717/299-5271
A Division of High Industries, Inc.

GIRDER G1A
VT. 116 OVER NEW HAVEN RIVER
VT. 116 STA. 1+255.00 TO STA. 1+299.00
TOWN OF BRISTOL, BRIDGE NO. 10
STATE OF VERMONT
AGENCY OF TRANSPORTATION

STATE CONTRACT PROJECT NO. ER 021-1(13) 070
CONTRACTOR BECK & BELLUCCI, INC.
IN CHARGE ALLEN (IH) MADE BY: A66 CHK'D. BY: PFH DATE: 11-8-99
CONTRACT NUMBER: VT-99109-1 DRAWING NUMBER: 3 OF 7

PLOTED: 10 NOV. 1999 142602